



414 Nicollet Mall
Minneapolis, MN 55401

November 5, 2025

Scott O. Arneson, Secretary
Goodhue County Economic Development Authority
509 West 5th Street
Goodhue County Government Center
Red Wing, MN 55066

**Re: Stakeholder Outreach - Proposed 345 kV Transmission Line Project
Goodhue County, Minnesota**

Dear Mr. Arneson:

Xcel Energy is proposing to permit, construct, and operate a new, approximately 1.3 mile long, double-circuit, 345-kilovolt (kV) high voltage transmission line (Project) that will connect Xcel Energy's existing North Rochester Substation to new substation facilities located at a proposed technology center/mixed use industrial development site (development site) near the City of Pine Island in Goodhue County, Minnesota. The development site (known as the Skyway Project⁴) is undergoing permitting and approval processes with the City of Pine Island separate from this 345 kV transmission line project.

To accommodate the proposed 345/345-kV high voltage transmission line, Xcel Energy's existing North Rochester Substation will be expanded to the north by approximately 17.9 acres and additional substation facilities will be constructed within the development site. The transmission line is proposed to have a 150-foot-wide right-of-way. The enclosed map shows the location of the proposed Project facilities. The proposed transmission line and substation expansion would be constructed primarily on land currently being farmed for corn and soybeans.

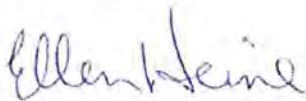
Xcel Energy plans to submit a Route Permit Application (RPA) with the Minnesota Public Utilities Commission (PUC) in the first quarter of 2026. We intend to file the RPA in accordance with Minnesota Statutes (Minn. Stat.) 216I.07 under the standard review process.

⁴ The Skyway Project is being proposed by Ryan Companies US, Inc. An Alternative Urban Areawide Review (AUAR) has been completed for the development site project and the City of Pine Island is currently reviewing that project for applicable permits and approvals. See the City of Pine Island website ([Project Skyway - Pine Island, MN](#)) for more information.

Xcel Energy requests your feedback to assist in identifying potential impacts. If you would like to meet to discuss the Project, or if you have questions or would like additional information, please contact me at Ellen.L.Heine@xcelenergy.com or (612) 330-6073.

We look forward to hearing from you about this Project and respectfully request comments by or before December 19, 2025.

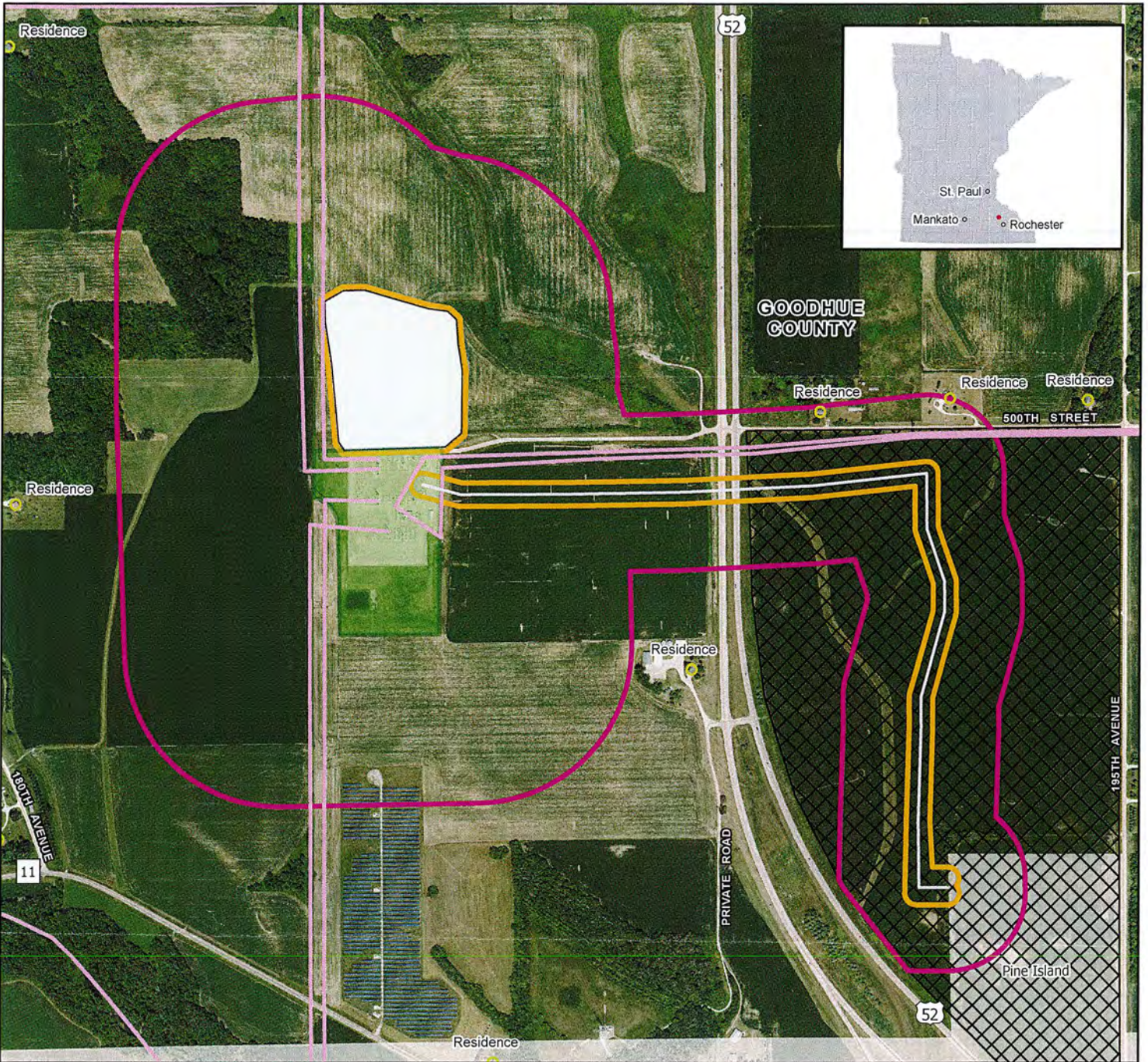
Sincerely,

A handwritten signature in blue ink that reads "Ellen Heine". The signature is written in a cursive style.

Ellen Heine
Xcel Energy
Principal Siting and Permitting Agent

Enc. Project Location Map

PROJECT LOCATION MAP



LEGEND

- Residences
- Existing Transmission Lines
- Proposed Transmission Line
- Proposed Right-of-Way
- Transmission Facility Study Area
- Proposed Development Site
- Approximate Extent of Substation Expansion
- Existing North Rochester Substation
- County Boundary
- City Boundary

Imagery: Goodhue County, 2023 NAIP



Scale: 1:11,000

Center: 92°39'16"W 44°13'21"N