

**NOTICE OF AVAILABILITY OF FINAL ENVIRONMENTAL IMPACT
STATEMENT AND COMMENT PERIOD**

Issued: July 25, 2025

In the Matter of the Application of Xcel Energy for a Certificate of Need and Route Permit for the Mankato – Mississippi River 345 kV Transmission Line Project in Southeast Minnesota

PUC Docket Numbers: E002/CN-22-532 and E002/TL-23-157

OA# Docket Number: 65-2500-40099

PLEASE TAKE NOTICE that the Minnesota Public Utilities Commission (Commission) has issued the Final Environmental Impact Statement (EIS) for Xcel Energy’s proposed Mankato – Mississippi River Transmission Line Project (MMRT). The proposed project includes: (1) a new approximately 130-mile long 345 kilovolt (kV) transmission line between the existing Wilmarth Substation in Mankato and the Mississippi River near Kellogg, and (2) a new approximately 20-mile long 161 kV transmission line between the existing North Rochester Substation near Pine Island and an existing transmission line northeast of Rochester.

The Final EIS analyzes the potential human and environmental impacts of the project and possible measures to mitigate these impacts. It analyzes routing alternatives that could be used for the project and provides a comparative analysis of routing options. The Final EIS responds to the comments received on the Draft EIS for the project. The Final EIS will be used by the Commission in deciding whether to issue a certificate of need and route permit for the project.

Reviewing the Final EIS

The Final EIS is available on eDockets <https://www.edockets.state.mn.us/documents>, by searching docket #22-532 for the certificate of need or docket #23-157 for the route permit.

Print copies and/or electronic flash drives of the Final EIS are available at the following locations:

- Blue Earth County Library, 100 E. Main Street Mankato, MN 56001
- Buckham Memorial Library, 11 Division Street E., Faribault, MN 55201
- Zumbrota Public Library, 100 West Avenue, Zumbrota, MN 55992

- Rochester Public Library, 101 2nd Street SE, Rochester, MN 55904
- Plainview Public Library, 345 1st Avenue NW, Plainview, MN 55964
- Owatonna Public Library, 105 N Elm Ave, Owatonna, MN 55060
- Waseca Le Sueur Library, 408 State St N, Waseca, MN 56093
- Dodge Center Library, 13 1st Ave NW, Dodge Center, MN 55927
- Environmental Conservation Library, Hennepin County Library – Minneapolis Central Government Documents – 2nd Floor, 300 Nicollet Mall, Minneapolis, MN 54401
- The Legislative Reference Library, 645 State Office, 100 Rev. Dr. Martin Luther King Jr. Blvd., St. Paul, MN 55155
- Hennepin County Library – Minneapolis, Central Business/Science/Gov Docs – 2nd Floor, 300 Nicollet Mall, Minneapolis, MN 54401

Comment Period

Written comments will be accepted through **August 15, 2025, by 4:30 p.m.** Please include the docket number in all communications. Comments received after the close of the comment period may or may not be considered by the Commission.

Topics for Comment

- *Is the Final Environmental Impact Statement adequate per Minnesota Rule 7850.2500?*

Submit Comments

Online <https://mn.gov/puc/consumers/public-comments>
Email consumer.puc@state.mn.us
U.S. Mail Consumer Affairs Office
 Minnesota Public Utilities Commission
 121 7th Place East, Suite 350
 St. Paul, MN 55101

Comments will be made available to the public via the Commission's website, except in limited circumstances consistent with the Minnesota Government Data Practices Act. The Commission does not edit or delete personal identifying information from submissions.

Additional Information

References to Staff. On July 1, 2025, Department of Commerce Energy Environmental Review and Analysis (DOC EERA) staff moved to the Minnesota Public Utilities Commission Energy

Infrastructure Permitting (PUC EIP) unit as directed by state law (Laws of Minn. 2024, ch.126, art. 7). While EERA staff initiated environmental review of this project prior to July 1, 2025, the environmental review is now being completed by PUC EIP staff. For accuracy related to procedural history, references to previous filings by EERA will be identified as such. The Final EIS does include references to EERA and EIP, and these should be considered interchangeable throughout the document.

Minnesota Statutes and Rules. This project is being reviewed under Minnesota Statutes chapters 216B and 216E, and Minnesota Rules chapters 7849 and 7850. The rules and statutes are available for review at: www.revisor.mn.gov

Review Process. Information on the review processes for certificates of need and site and route permits for large electric power facilities is available on the Commission's website at: <https://mn.gov/puc/activities/energy-facilities/>

Filing Requirements. Utilities, telecommunications carriers, official parties, and state agencies are required to file documents using the Commission's electronic filing system (eFiling). All parties, participants, and interested persons are also encouraged to use eFiling: mn.gov/puc/edockets, select *Go to eDockets* and follow the prompts.

Full Case Record. See all documents filed in this matter via the Commission's website at mn.gov/puc/edockets, select *Go to eDockets*, enter the year and the docket number (22-532 for the certificate of need or 23-157 for the route permit), and select *Search*.

Subscribe to the Docket. To receive email notification when new documents are filed in this matter visit: <https://www.edockets.state.mn.us/EFiling>, select *Subscribe to Dockets*.

Project Mailing List. Sign up to receive notices about project milestones and opportunities to participate or change your mailing preference. Email eservice.admin@state.mn.us or call 651-201-2246 with the docket number(s) (22-532 or 23-157), your name, mailing address, and email address.

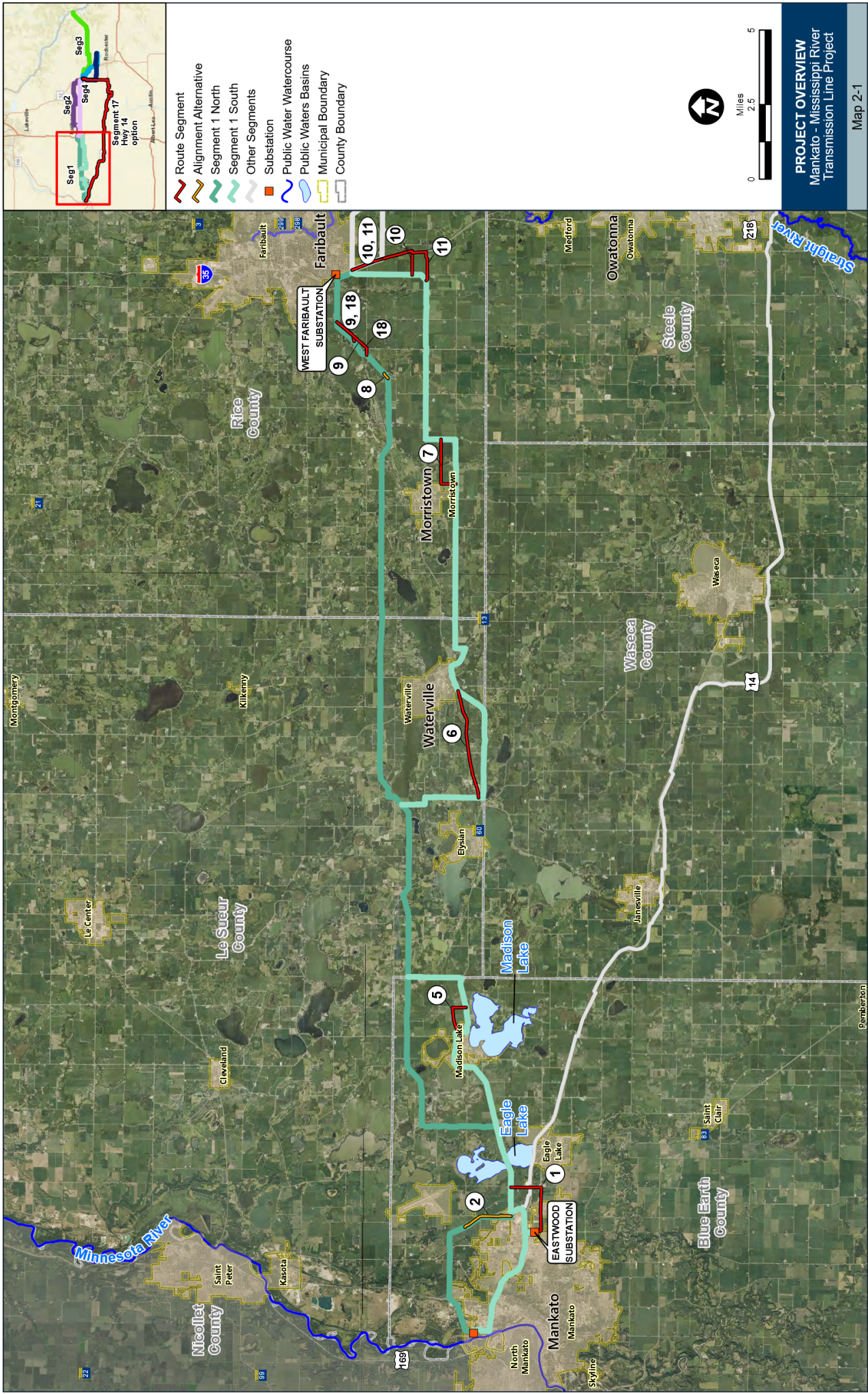
Questions about these dockets or Commission process and procedure?

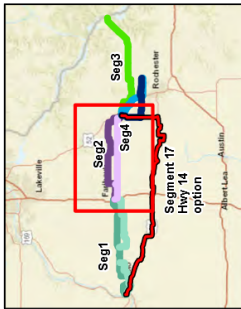
Contact Commission staff:

Richard Davis, Environmental Review Manager, richard.davis@state.mn.us or 651-539-1077
Cezar Panait, Energy Facilities Planner, cezar.panait@state.mn.us or 651-201-2207

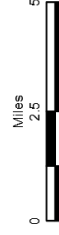
To request this document in another format such as large print or audio, call 651-296-0406 (voice). Persons with a hearing or speech impairment may call using their preferred Telecommunications Relay Service or email consumer.puc@state.mn.us for assistance.

Project Overview Maps





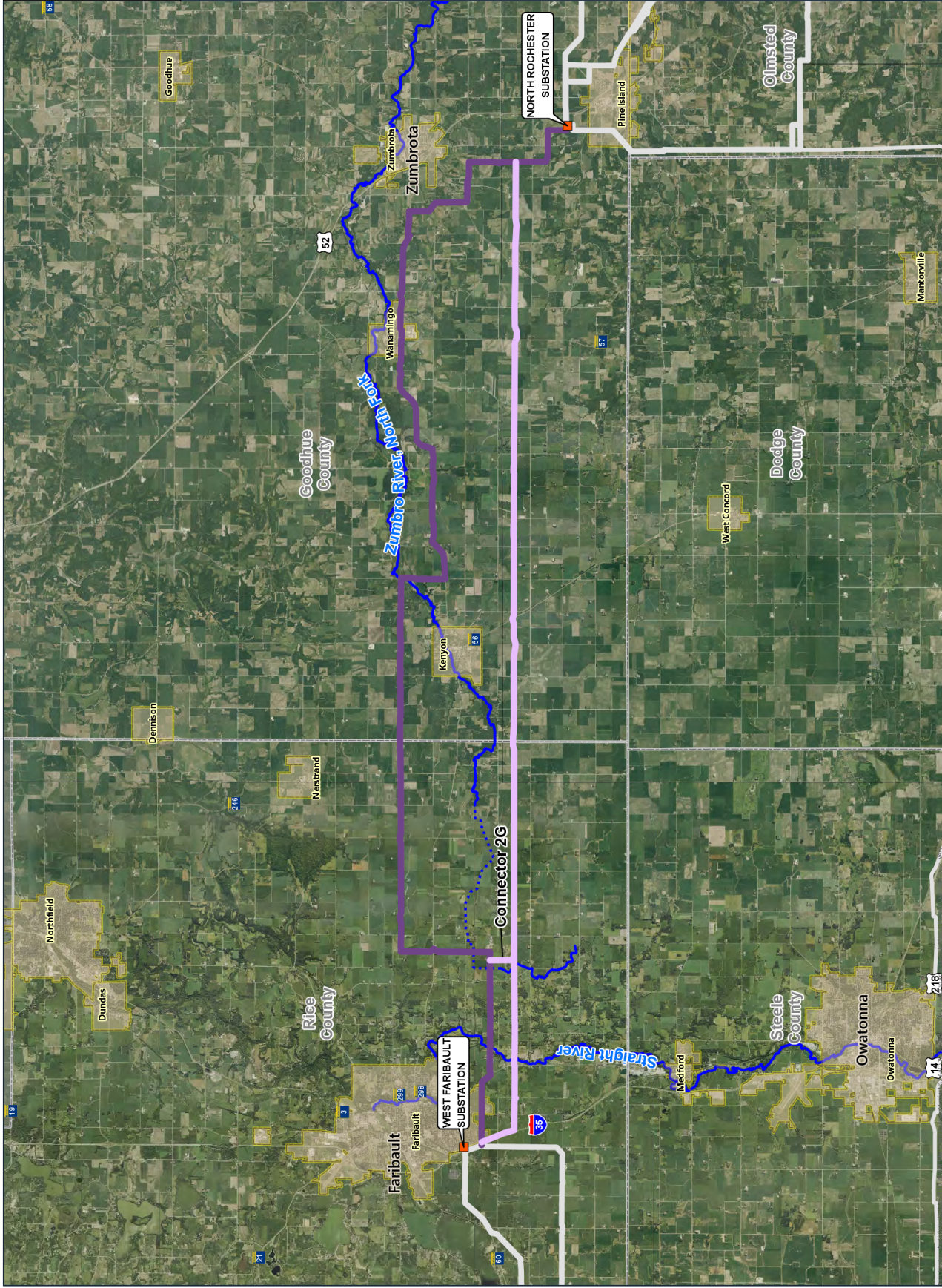
- Segment 2 North
- Segment 2 South
- Other Segments
- Substation
- Public Water Watercourse
- Public Ditch/Altered Natural Watercourse
- Public Waters Basins
- Municipal Boundary
- County Boundary

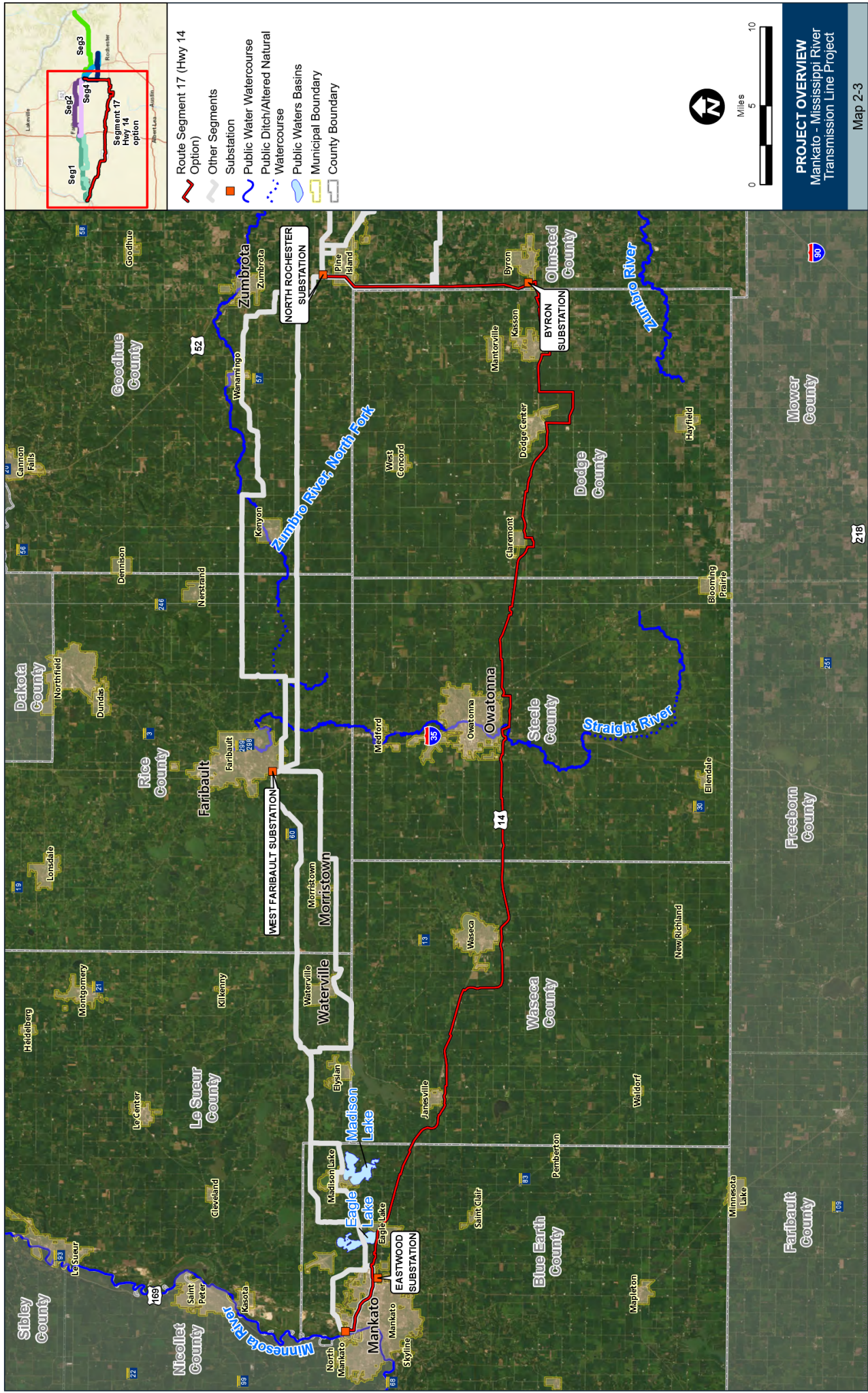


PROJECT OVERVIEW

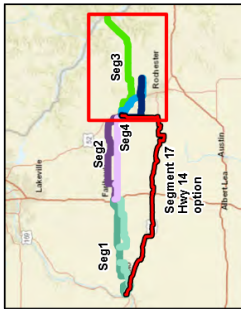
Mankato - Mississippi River Transmission Line Project

Map 2-2





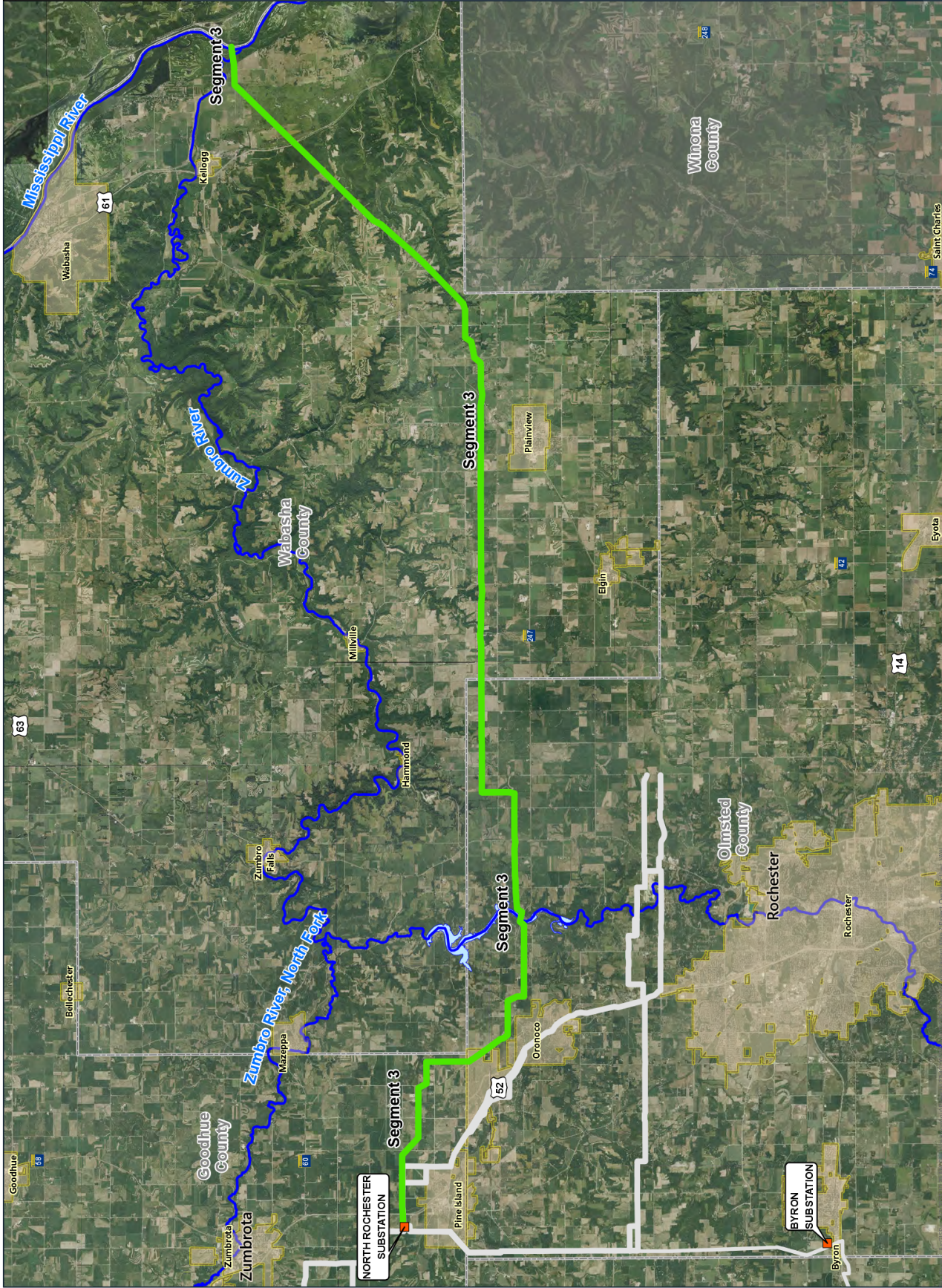
PROJECT OVERVIEW
Mankato - Mississippi River
Transmission Line Project

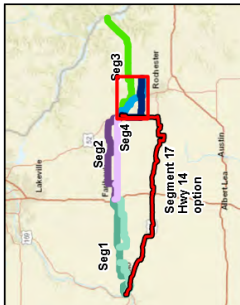


- Segment 3
- Other Segments
- Substation
- Public Water Watercourse
- Public Waters Basins
- Municipal Boundary
- County Boundary

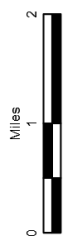


PROJECT OVERVIEW Mankato - Mississippi River Transmission Line Project





- Route Segment
- Alignment Alternative
- Segment 4 East
- Segment 4 West
- Other Segments
- Substation
- Public Water Watercourse
- Public Waters Basins
- Municipal Boundary
- County Boundary



PROJECT OVERVIEW
Mankato - Mississippi River
Transmission Line Project

