

APPENDIX A:
Maps 11-20

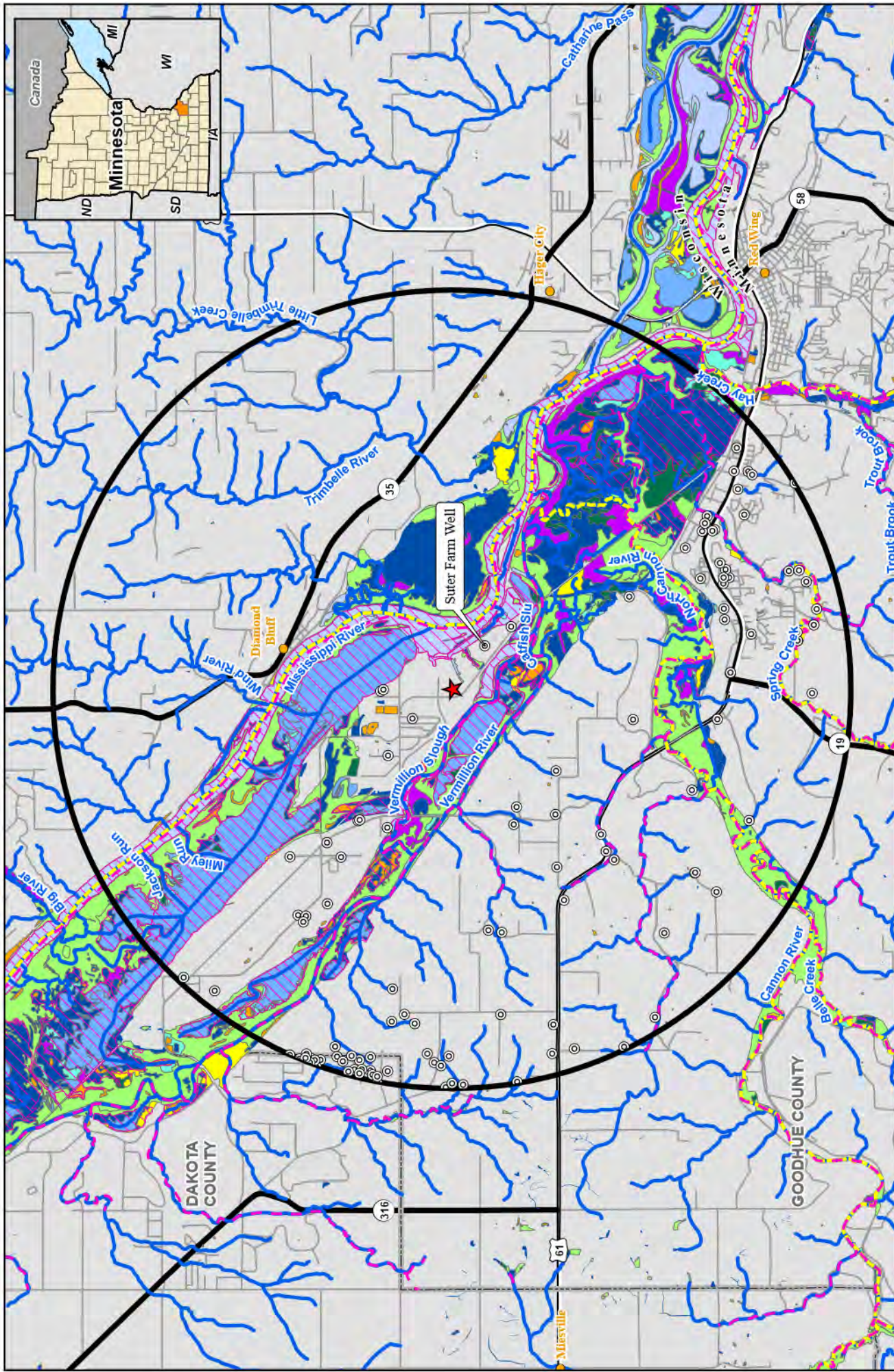
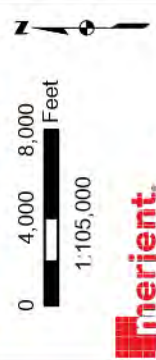
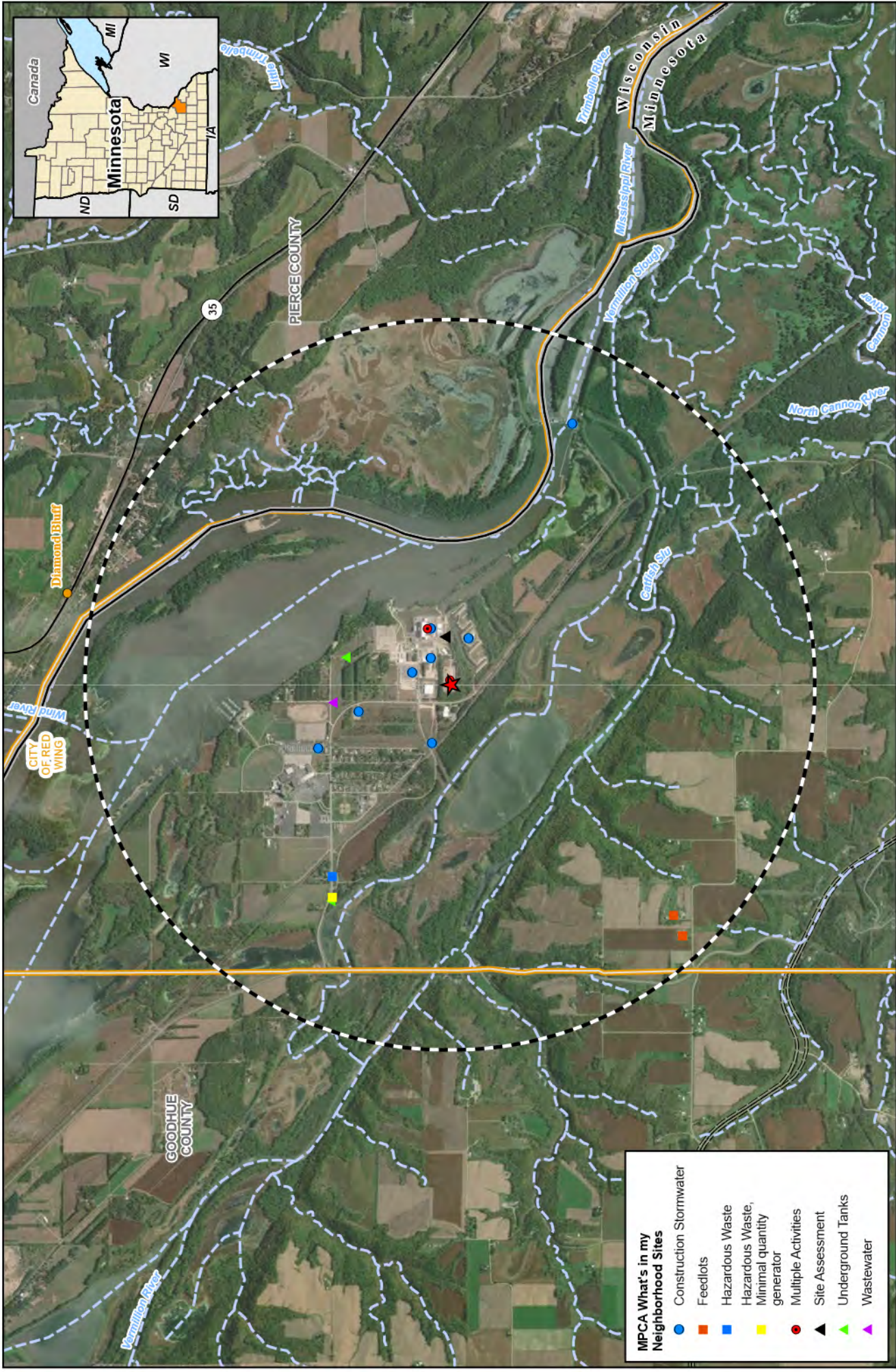


Figure 11: Water Resources Map
Xcel Energy - Prairie Island Nuclear Generating Plant
ISFSI Expansion Project
Goodhue County, Minnesota





- MPCA What's in my Neighborhood Sites**
- Construction Stormwater
 - Feedlots
 - Hazardous Waste
 - Hazardous Waste, Minimal quantity generator
 - Multiple Activities
 - Site Assessment
 - ▲ Underground Tanks
 - ▲ Wastewater

0 1,750 3,500 Feet

1:46,000



For Environmental Review Purposes Only

Figure 12: MPC What's in my Neighborhood
Xcel Energy - Prairie Island Nuclear Generating Plant
ISFSI Expansion Project
 Goodhue County, Minnesota

- ★ Project Location
- 2-Mile Radius
- NHD Waterway
- State Boundary
- County Boundary
- City Boundary



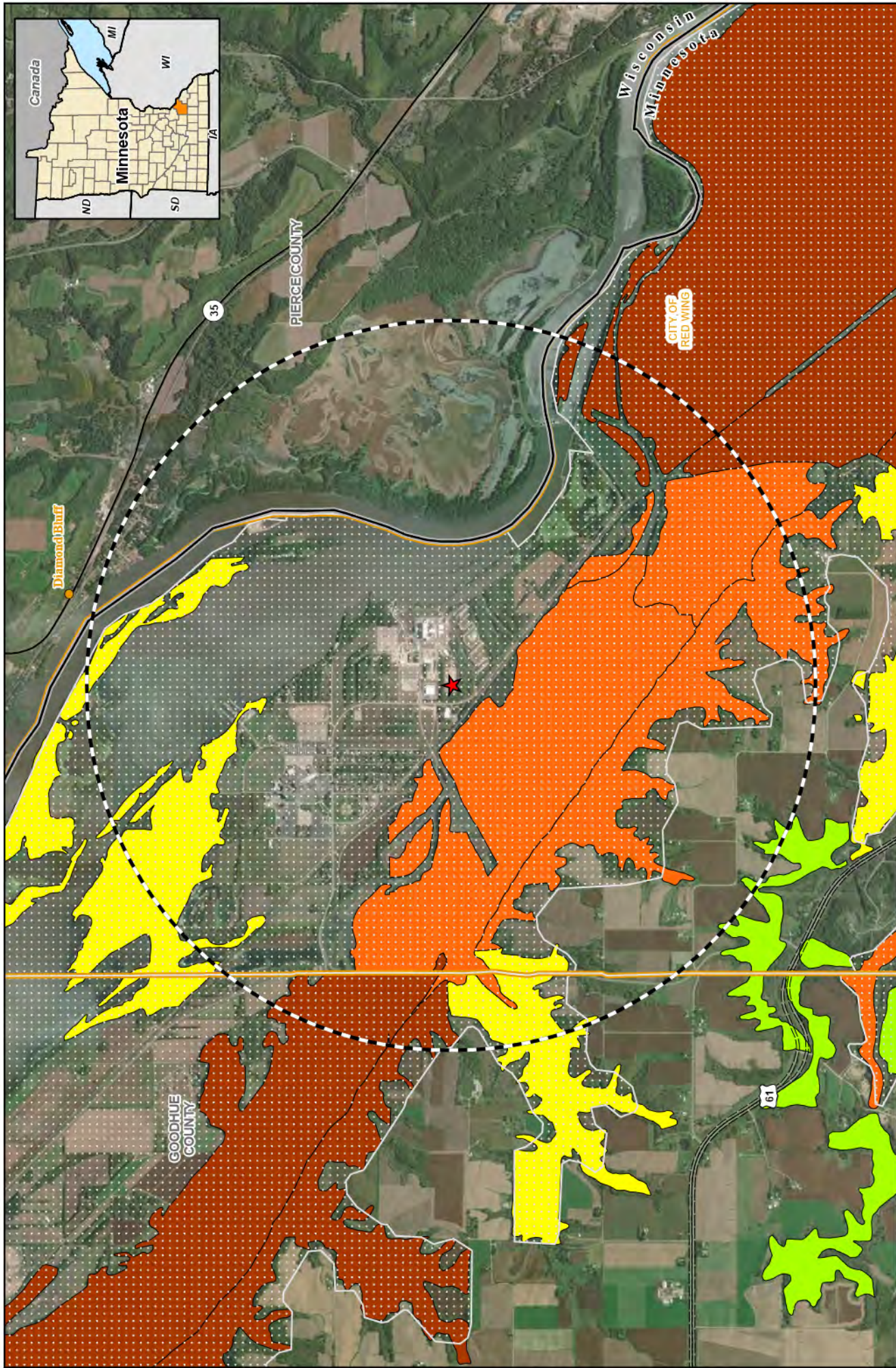
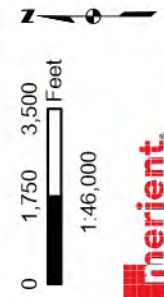


Figure 13: Environmental Resources Map
Xcel Energy - Prairie Island Nuclear Generating Plant
ISFSI Expansion Project
 Goodhue County, Minnesota



- ★ Project Location
- ⊖ 2-Mile Radius
- ▭ State Boundary
- ▭ County Boundary
- ▭ City Boundary

- Important Bird Area
- Sites of Biodiversity Significance
- MCBS site below minimum biodiversity significance threshold

- MCBS site with moderate biodiversity significance
- MCBS site with high biodiversity significance
- MCBS site with outstanding biodiversity significance



★ Project Location
● Noise Sensitive Area
 Half-mile Radius
 State Boundary
 County Boundary

Figure 14: Noise Sensitive Areas
Xcel Energy - Prairie Island Nuclear Generating Plant
ISFSI Expansion Project
 Goodhue County, Minnesota

Noise Sensitive Area	Distance from Project (ft)
Site #1 - Residence	2322.95
Site #2 - Residence	2368.06
Site #3 - Residence	2439.84
Site #4 - Residence	2515.67
Site #5 - Educational/Training Center	936.57

0 600 1,200 Feet

 1:12,000

merjent.
 For Environmental Review Purposes Only

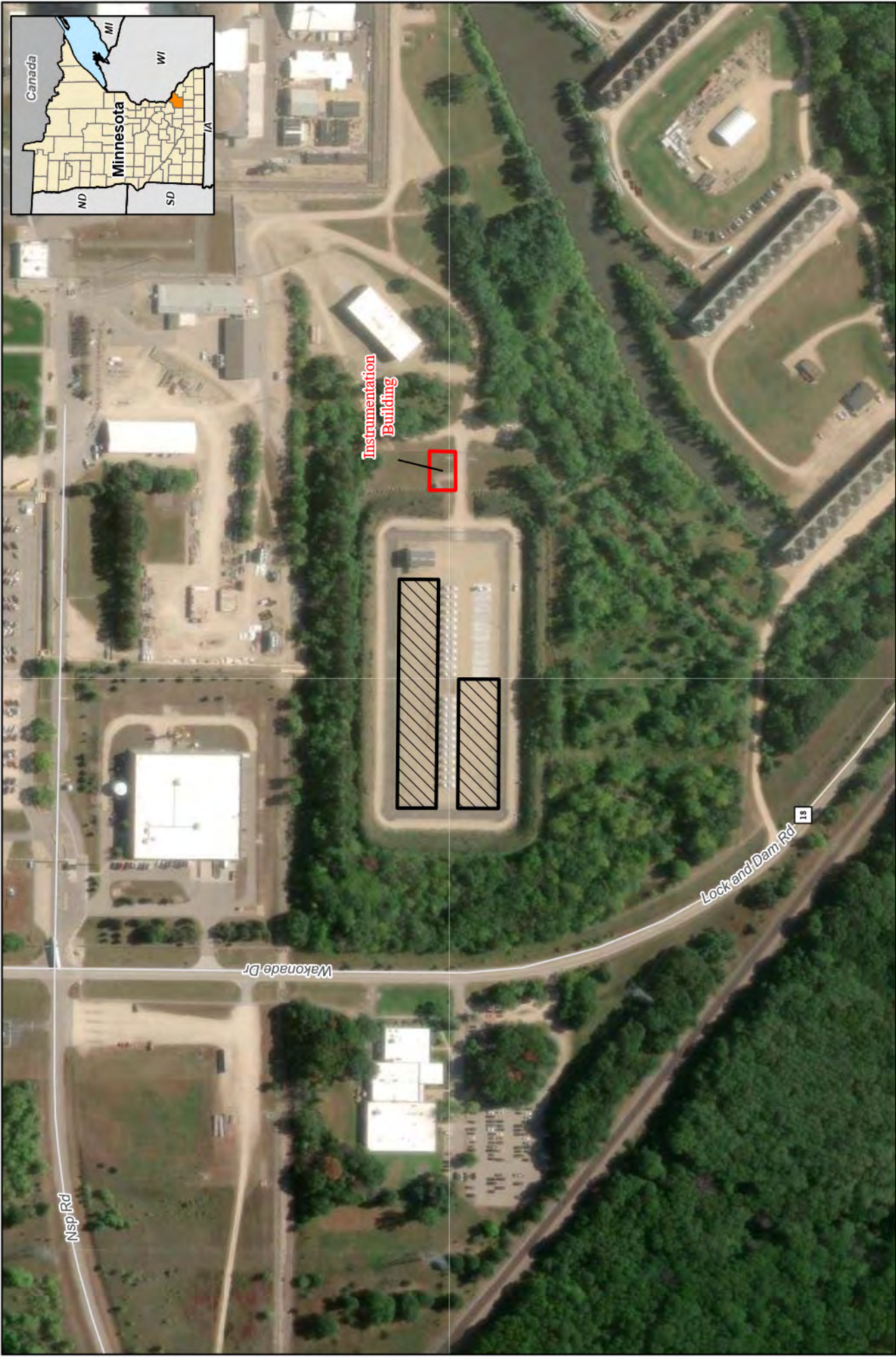
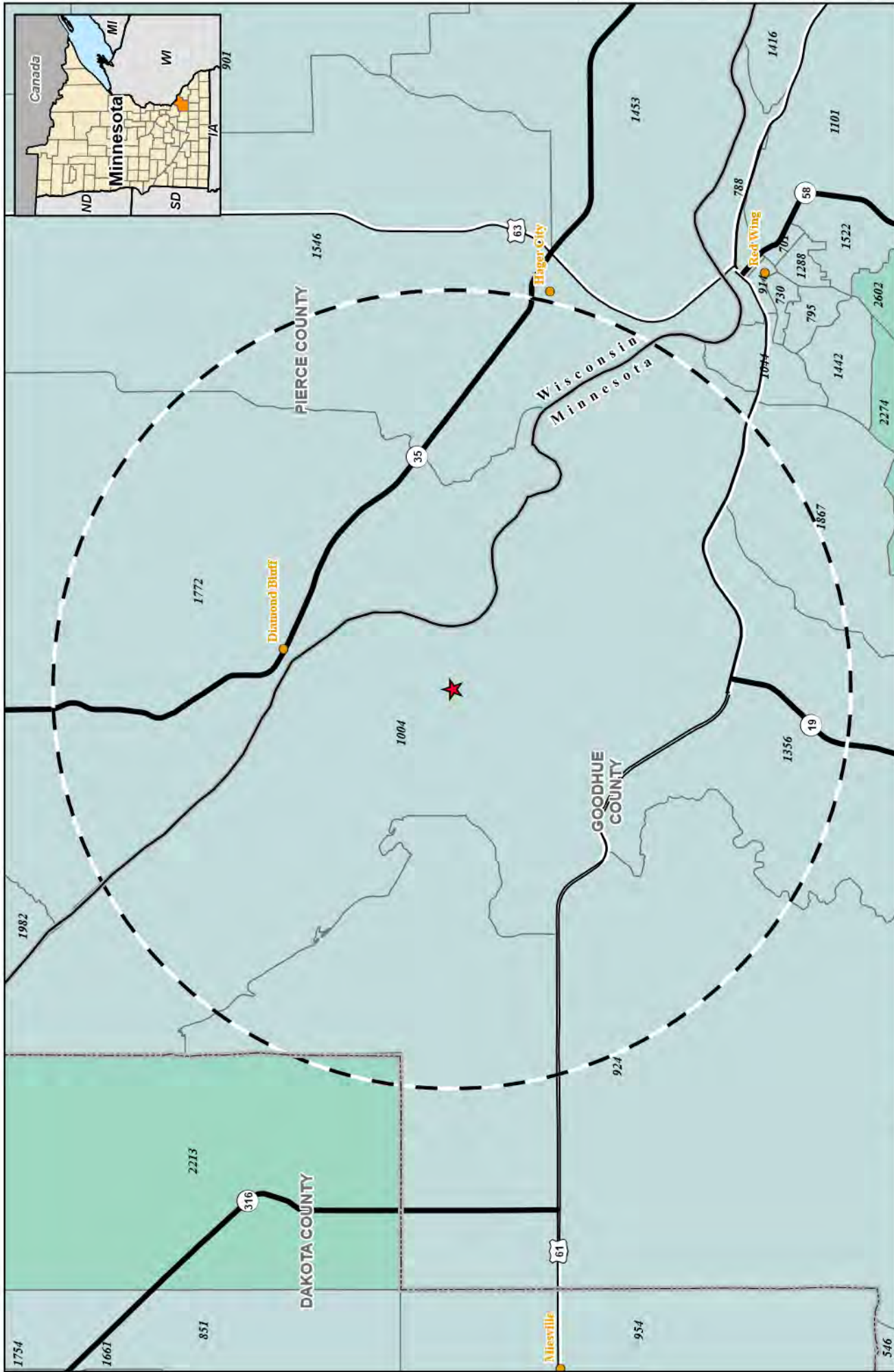


Figure 16: Cumulative Effects
Xcel Energy - Prairie Island Nuclear Generating Plant
ISFSI Expansion Project
 Goodhue County, Minnesota

0 150 300 Feet
 1:3,600

Merjent.
 For Environmental Review Purposes Only

Connected/Phased Action
 Project Footprint



Census Block Group Population,
American Community Survey 5-
Year Summary (2017-2021)
Persons per Square Mile

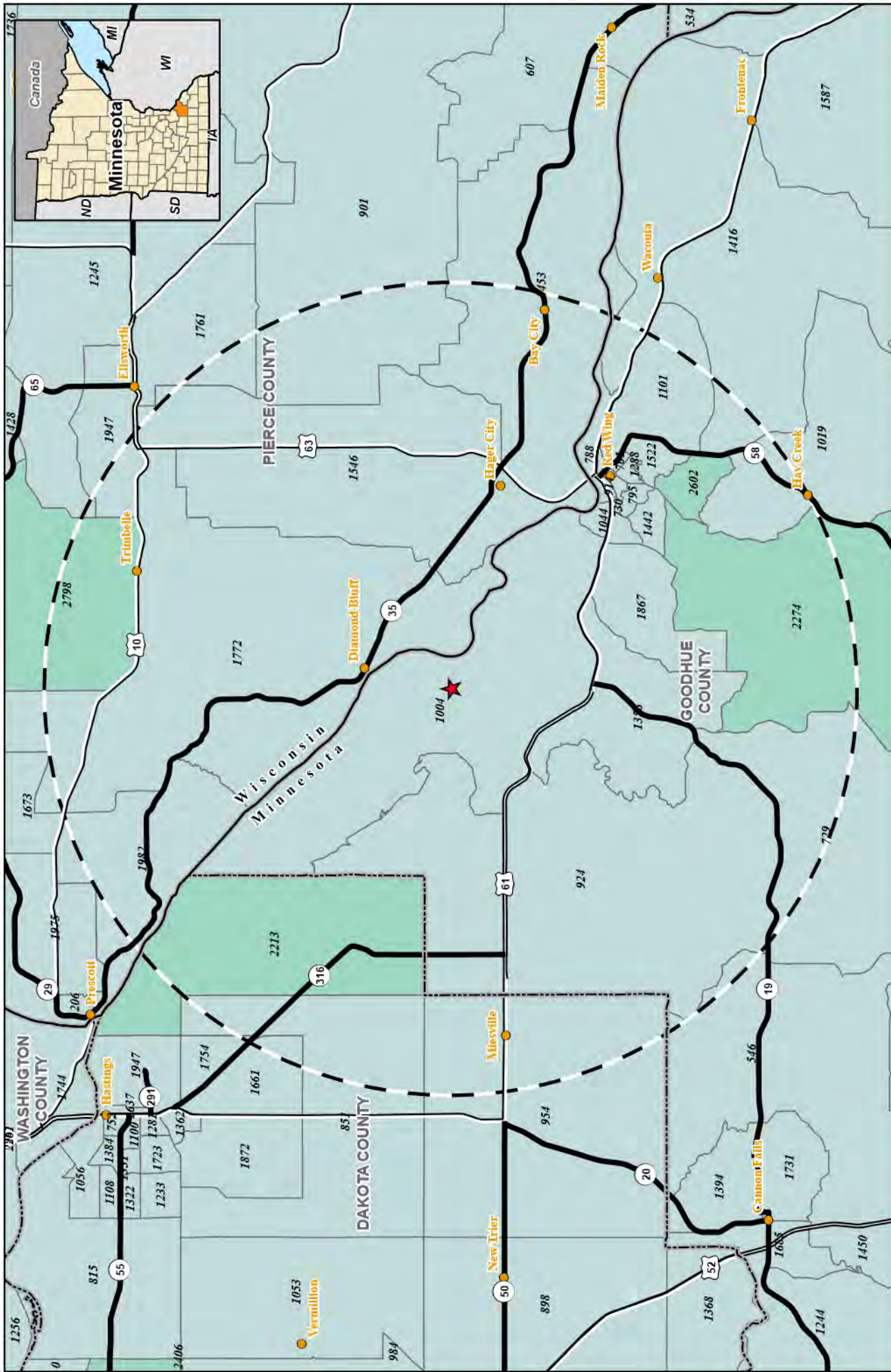
	<2,000
	2,001-4000

Project Location
 5-Mile Radius
 State Boundary
 County Boundary

Figure 17: Population Density Within 5 Miles
Xcel Energy - Prairie Island Nuclear Generating Plant
ISFSI Expansion Project
Goodhue County, Minnesota

0 4,000 8,000 Feet
 1:105,000

merjent.
 For Environmental Review Purposes Only



Census Block Group Population,
American Community Survey 5-
Year Summary (2017-2021)
Persons per Square Mile

	<2,000
	2,001-4000

Project Location
10-Mile Radius
State Boundary
County Boundary

Figure 18: Population Density Within 10 Miles
Xcel Energy - Prairie Island Nuclear Generating Plant
ISFSI Expansion Project
Goodhue County, Minnesota

0 1.5 3 Miles
1:205,000

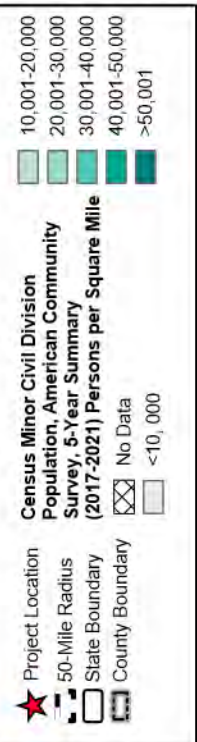
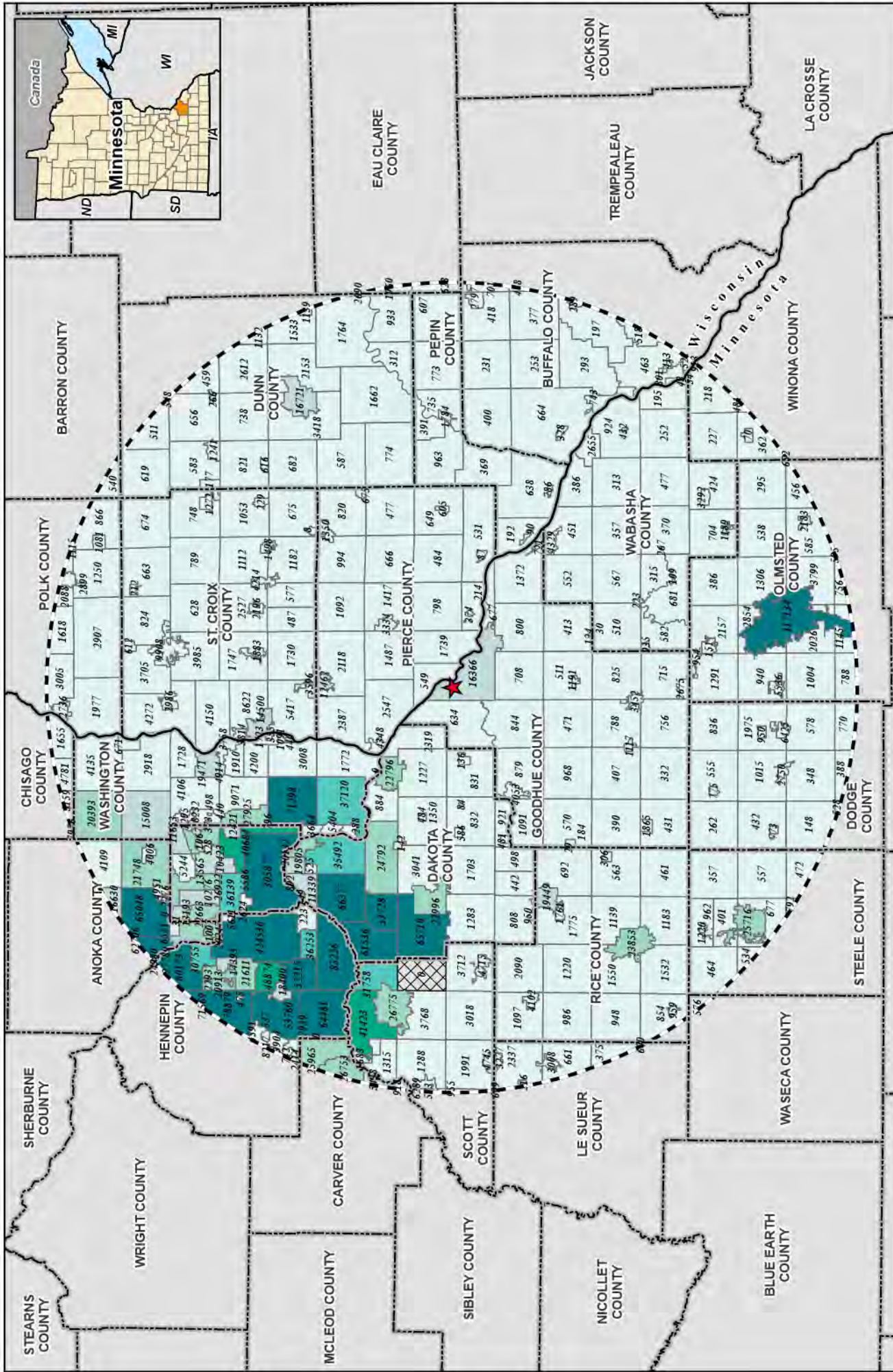


Figure 19: Population Density Within 50 Miles
 Xcel Energy - Prairie Island Nuclear Generating Plant
 ISFSI Expansion Project
 Goodhue County, Minnesota



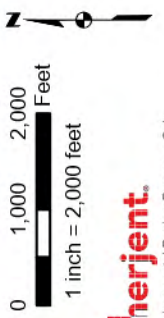


Figure 20: Residences within 1-Mile
Xcel Energy - Prairie Island Nuclear Generating Plant
ISFSI Expansion Project
 Goodhue County, Minnesota

- Residence
- 1-Mile Radius
- Existing Storage Pad
- State Boundary
- County Boundary
- City Boundary