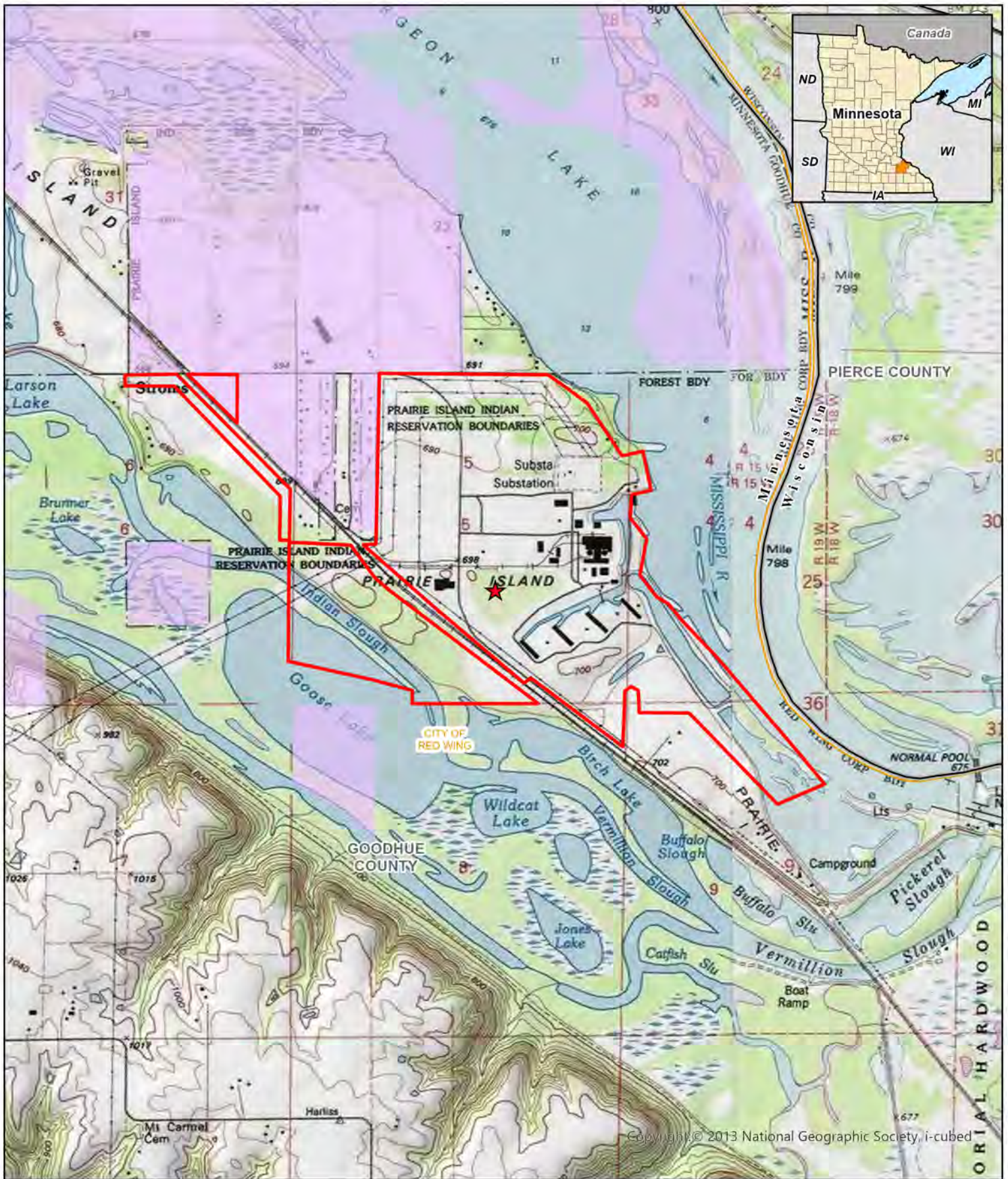
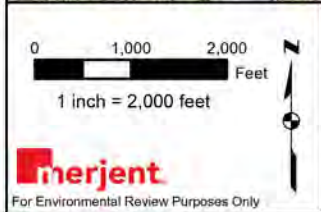


APPENDIX A:  
Maps 1-5

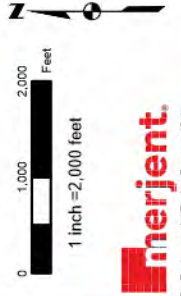
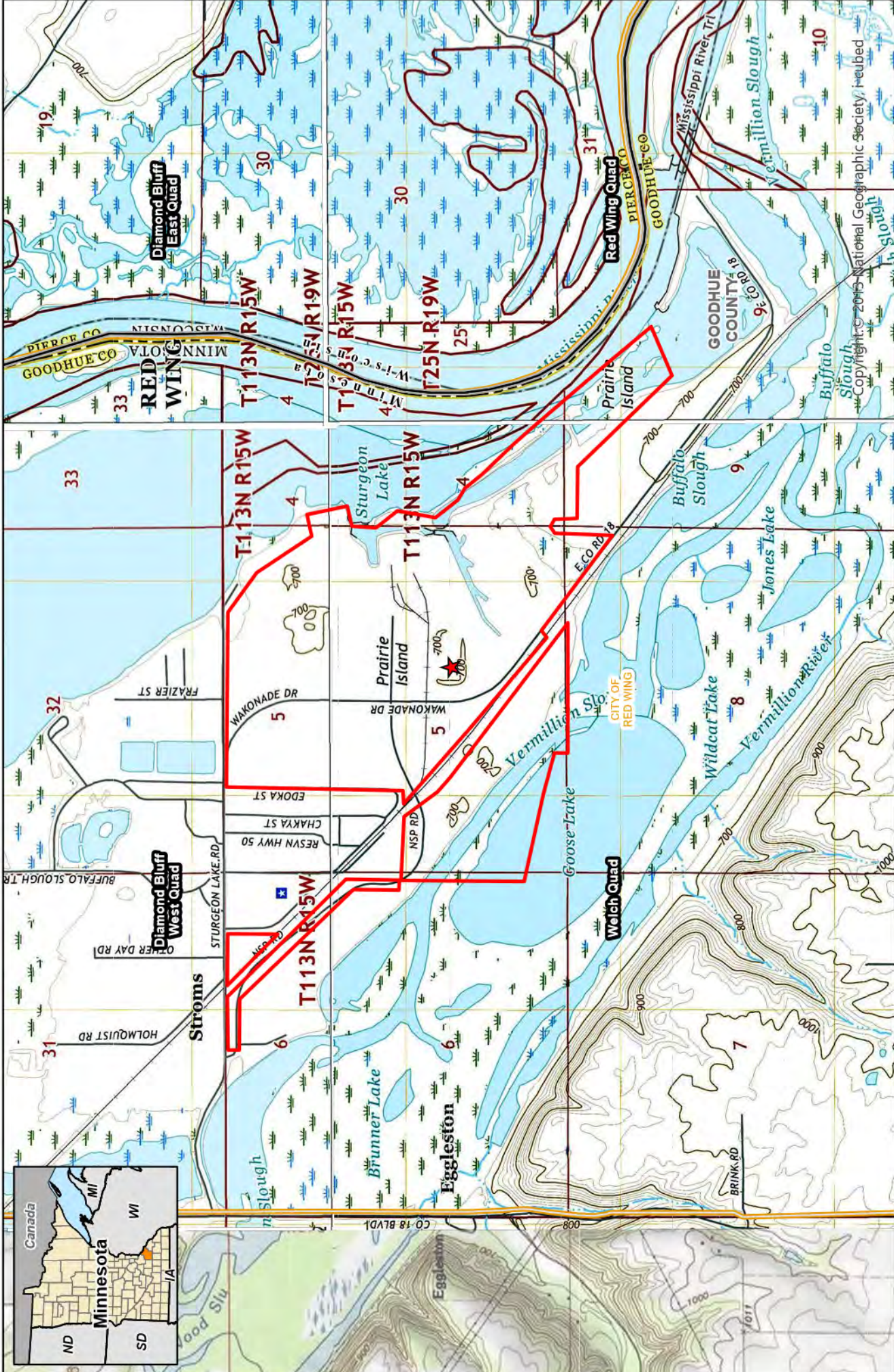


Copyright © 2013 National Geographic Society, i-cubed




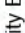


**Figure 1: Topographic Map**  
**Xcel Energy - Prairie Island Nuclear Generating Plant**  
**ISFSI Expansion Project**  
 Goodhue County, Minnesota

- ★ Project Location
- State Boundary
- Prairie Island Indian Community
- PINGP Property Boundary
- County Boundary
- City Boundary



**Figure 2: U.S. Geological Survey, 7.5 minute  
Xcel Energy - Prairie Island Nuclear Generating Plant  
ISFSI Expansion Project**  
Goodhue County, Minnesota

-  Project Location
-  PINGP Property Boundary
-  City Boundary
-  County Boundary



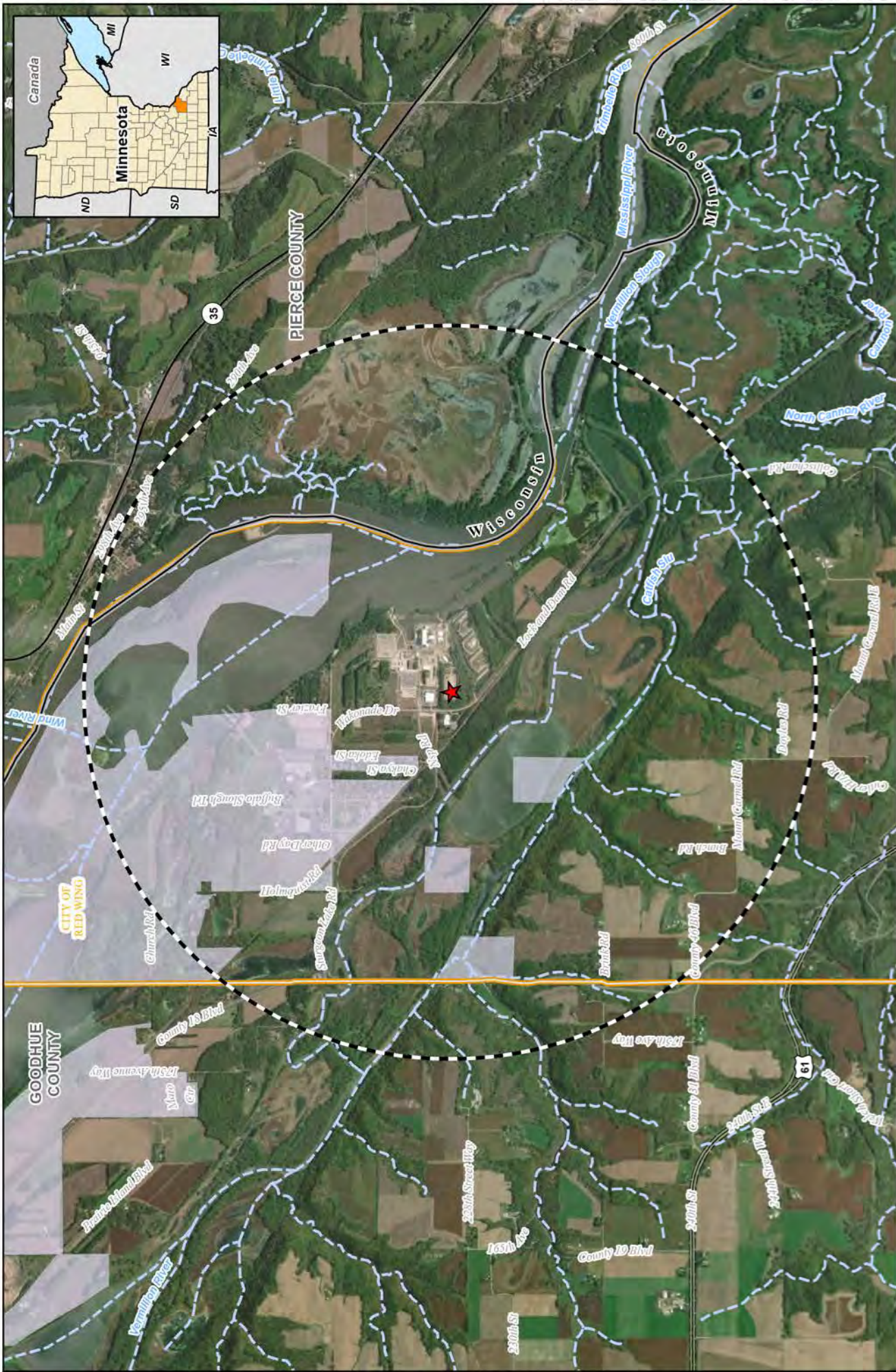
**Legend**

- ★ Project Location
- Blue dashed line NHD Waterway
- Orange outline City Boundary
- Purple outline Prairie Island
- Light purple outline Indian Community
- Black dashed circle 1-Mile Radius
- Black dashed line State Boundary
- Grey outline County Boundary

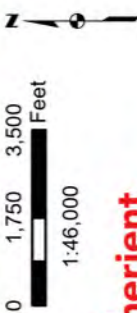
**Figure 3: Aerial Map - 1-Mile Radius**  
**Xcel Energy - Prairie Island Nuclear Generating Plant**  
**ISFSI Expansion Project**  
 Goodhue County, Minnesota

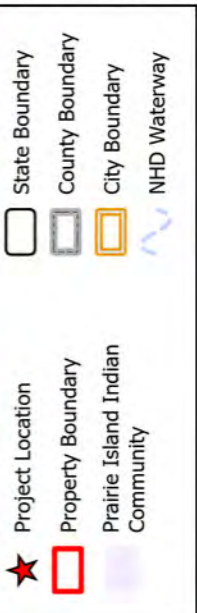
**Scale**  
 0 1,000 2,000 Feet  
 1 inch = 2,000 feet

**North Arrow**



**Figure 4: Aerial Map - 2-Mile Radius**  
**Xcel Energy - Prairie Island Nuclear Generating Plant**  
**ISFSI Expansion Project**  
 Goodhue County, Minnesota





**Figure 5: Owner Controlled Area Boundary**  
**Xcel Energy - Prairie Island Nuclear Generating Plant**  
**ISFSI Expansion Project**  
 Goodhue County, Minnesota

