

**NOTICE OF COMMENT PERIOD ON  
THE MERITS OF THE CERTIFICATE OF NEED APPLICATION**

Issued: April 4, 2024

**In the Matter of the Application of Minnesota Power and Great River Energy for a Certificate of Need for up to an approximately 180-mile, double circuit 345-kV transmission line from Itasca County to Benton County, Minnesota**

**Docket Number:** E015, ET2/CN-22-416

**Comment Period:** Initial comment period closes **May 24, 2024**, at 4:30 p.m.  
Reply comment period closes **June 21, 2024**, at 4:30 p.m.  
Supplemental comment period closes **June 28, 2024**, at 4:30 p.m.

Please include the docket number in all communications. Comments received after the close of the comment period may or may not be considered by the Minnesota Public Utilities Commission (Commission).

**Topics for Comment**

- Are there any contested issues of fact with respect to the representations made in the certificate of need application?
- Should the Commission grant a certificate of need for the proposed project?
- Are there other issues or concerns related to this matter?

**Submit Comments**

**Online:** [mn.gov/puc/consumers/public-comments](https://mn.gov/puc/consumers/public-comments)

**Email:** [consumer.puc@state.mn.us](mailto:consumer.puc@state.mn.us)

**U.S. Mail:** Consumer Affairs Office  
Minnesota Public Utilities Commission  
121 7th Place East, Suite 350  
St. Paul, MN 55101

Comments will be made available to the public via the Commission's website, except in limited circumstances consistent with the Minnesota Government Data Practices Act. The Commission does not edit or delete personal identifying information from submissions.

**Background.** Minnesota Power and Great River Energy have filed a certificate of need and route permit application with the Minnesota Public Utilities Commission. The project includes the following segments:

- A new approximately 140-mile long, double-circuit 345-kV transmission line from Itasca County to Benton County.
- The replacement of a 20-mile 230-kV line with two 345-kV circuits from the Benton County Substation to the new Xcel Energy Big Oaks Substation on double-circuit 345-kV structures.
- The replacement of a 20-mile 345-kV line from Benton County Substation to the existing Xcel Energy Sherco Substation in Sherburne County using double-circuit 345-kV structures.

The application is being reviewed under the Commission's informal process (Minn. R. 7829.1200). A public hearing will be held after the close of this comment period to obtain additional public comment on the necessity of granting a certificate of need (Minn. R. 7829.2500, subp. 9).

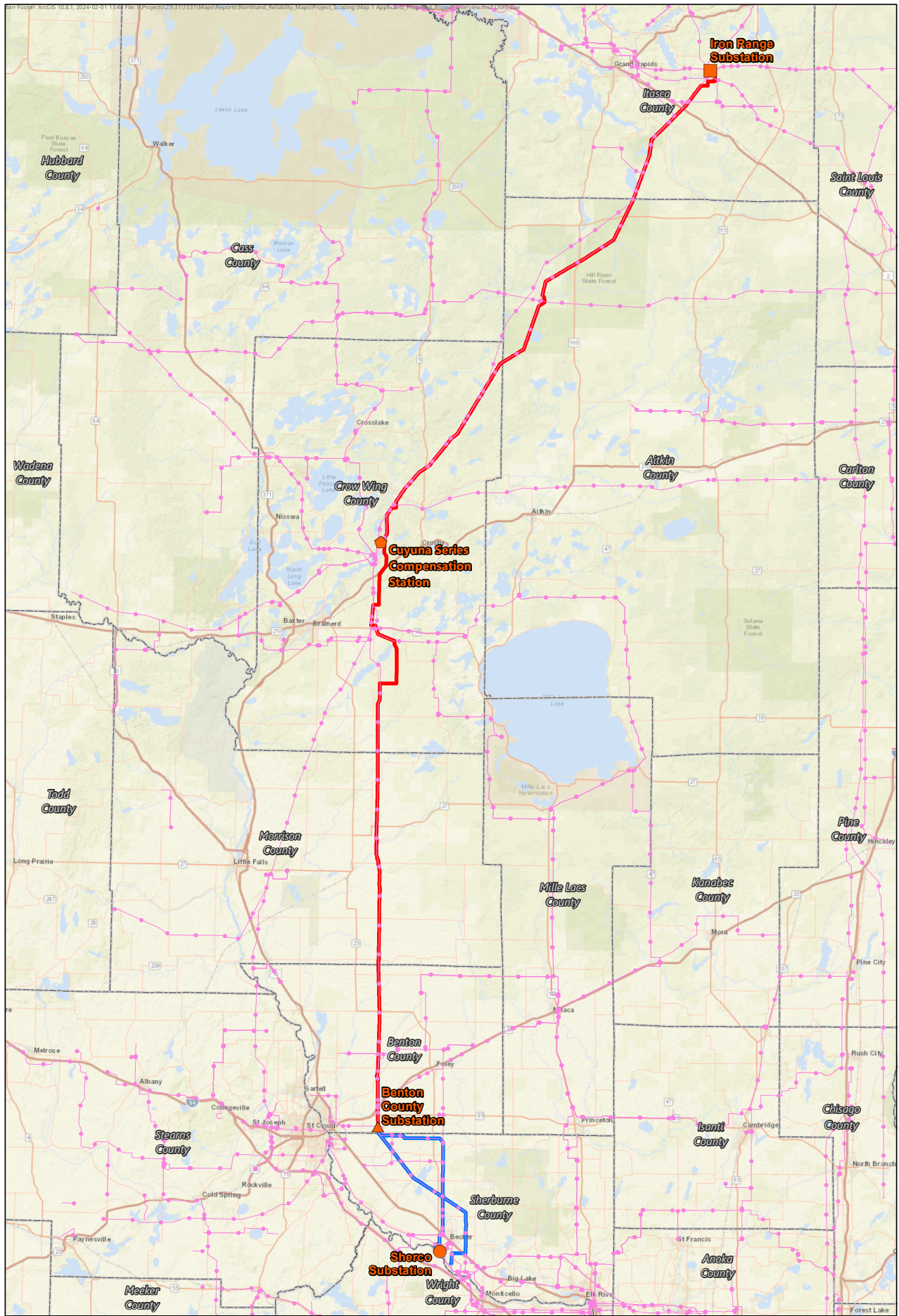
**Filing Requirements.** Utilities, telecommunications carriers, official parties, and state agencies are required to file documents using the Commission's electronic filing system (eFiling). All parties, participants, and interested persons are also encouraged to use eFiling: [mn.gov/puc/edockets](https://mn.gov/puc/edockets), select *Go to eDockets* and follow the prompts.

**Full Case Record.** See all documents filed in this matter via the Commission's website at [mn.gov/puc/edockets](https://mn.gov/puc/edockets), select *Go to eDockets*, enter the year (22) and the docket number (416), and select *Search*.

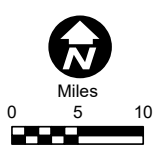
**Subscribe to the Docket.** To receive email notification when new documents are filed in this matter visit: <https://www.edockets.state.mn.us/EFiling> and select *Subscribe to Dockets*.

**Questions about these dockets or Commission process and procedure?** Contact Commission staff, Craig Janezich at [craig.janezich@state.mn.us](mailto:craig.janezich@state.mn.us) or 651-201-2203.

To request this document in another format such as large print or audio, call 651-296-0406 (voice). Persons with a hearing or speech impairment may call using their preferred Telecommunications Relay Service or email [consumer.puc@state.mn.us](mailto:consumer.puc@state.mn.us) for assistance.



- ▬ Proposed Route Segment 1
- ▬ Proposed Route Segment 2
- ▬ Existing Transmission Line
- ▲ Benton County Substation
- Iron Range Substation
- Sherco Substation
- ◆ Cuyuna Series Compensation Station



Map 1  
**APPLICANT'S PROPOSED PROJECT**  
 Scoping Alternatives  
 Northland Reliability Project