



United States Department of Agriculture

Farmland Protection Policy Act (FPPA): Program Overview and NRCS Responsibilities



Natural
Resources
Conservation
Service



Michael Robotham, National Soil Scientist and FPPA Program Manager
John Andreoni, Management Analyst

Natural
Resources
Conservation
Service

nrcs.usda.gov/

27 October 2020, 2 PM Eastern Time

Topics to be addressed

- Brief history of FPPA
- Where does it apply?
- Requirements and “who does what?”
- Land evaluation / site assessment (LESA)
- Reporting requirements (CPA-2)
- Questions



Farmland Protection Policy Act (FPPA)

- Passed by Congress in 1981 (7 USC 4201 and 7 CFR Ch. VI Part 658)
- Purposes:
 - Minimize federally-aided conversion of farmland
 - Funders consider alternative actions
 - Assure that federal programs are compatible with state and local programs to protect farmland.



How does one “comply with FPPA”?

- FPPA applies if an **activity** meets these conditions:
 - **Federal funds** are involved
 - **Irreversible conversion** of prime, unique or important farmland to non-agricultural use
 - None of the **exemptions** to FPPA apply
- If FPPA applies, then form (AD-1006 or CPA-106) required



Key terms and concepts



Natural
Resources
Conservation
Service

nrcs.usda.gov/



Activity



- **Any action taken that affects farmland**
- **Examples**
 - Building a housing development
 - Building (or widening) a road
 - Expanding an airport
 - Expanding a sewage treatment plant
 - Developing a municipal landfill
 - Etc...





Federal funds

- Money spent by a federal agency on the activity
- Can be any agency (including NRCS)
- Most common agencies in FY2019
 - Rural Development (USDA-RD)
 - Housing and Urban Development (HUD)
 - Department of Transportation (DOT)

\$

\$

\$



Important Farmlands

- Prime farmlands
 - Including prime with modifiers
- Unique farmlands
- State and locally important farmlands



Defined in (7 CFR § 657)

Natural
Resources
Conservation
Service

nrcs.usda.gov/



Irreversible conversion

- Land no longer usable for agriculture
- Conversion is “permanent”
 - Nothing lasts forever, but ...
 - Land cannot be “restored” at all or at least not without significant time and expense.
- **NOT AN NRCS DECISION**
 - Funding agency makes the call
 - NRCS CAN (but is not required to) provide input/advice



Exemptions (land)



- Land already “developed” or already irreversibly converted
 - US Census urban areas maps
 - Existing “footprint” including right-of-ways
- Land already committed to urban development
- Land committed to water storage



Exemptions (activities)

- **Construction of non-farm structures necessary to support ongoing farm operations**
 - Barns, manure storage lagoons, access roads, etc.
 - Virtually all NRCS activities fall under this exemption
- **Construction / land development for national defense purposes**



Federal agency requirements

- Follow the directions!
- The federal agency **must** submit:
 - One original copy of the form (AD-1006 or NRCS – CPA – 106) to NRCS
 - Parts I and III **must** be completed
 - Must include “appropriately scaled maps” indicating the location of the project site(s)
- Fill out parts VI and VII and return final form to NRCS (after NRCS determination)
- Electronic correspondence is permissible (and usually preferred)



NRCS requirements



- Determine whether FPPA applies
- If FPPA applies – NRCS will complete parts II, IV and V of the form
- Return the form to the applicant and keep a copy for the record
- Response time requirements:
 - 10 working days (if standard)
 - 30 working days if site visit needed or no LE (must inform applicant)



What else?



- **Which form?**
 - AD-1006 is default
 - NRCS-CPA-106 for corridor projects
- **Official data sources**
 - SSURGO data (WSS) for prime and unique farmland
 - eFOTG for farmland of state and local importance
 - Many states have this as GIS layer
 - Generally, but not always, included in SSURGO
 - State and local is only “legit” if certified by STC
 - State or Local Land Evaluation (LE) values





United States Department of Agriculture



The AD-1006 aka THE FORM



Natural
Resources
Conservation
Service

nrcs.usda.gov/



U.S. Department of Agriculture

FARMLAND CONVERSION IMPACT RATING

PART I (To be completed by Federal Agency)		Date Of Land Evaluation Request			
Name of Project		Federal Agency Involved			
Proposed Land Use		County and State			
PART II (To be completed by NRCS)		Date Request Received By NRCS		Person Completing Form:	
Does the site contain Prime, Unique, Statewide or Local Important Farmland? (If no, the FPPA does not apply - do not complete additional parts of this form)		YES <input checked="" type="checkbox"/>	NO <input type="checkbox"/>	Acres Irrigated	Average Farm Size
Major Crop(s)	Farmable Land In Govt. Jurisdiction Acres: %	Amount of Farmland As Defined in FPPA Acres: %			
Name of Land Evaluation System Used	Name of State or Local Site Assessment System	Date Land Evaluation Returned by NRCS			
PART III (To be completed by Federal Agency)		Alternative Site Rating			
		Site A	Site B	Site C	Site D
A. Total Acres To Be Converted Directly					
B. Total Acres To Be Converted Indirectly					
C. Total Acres In Site		0			
PART IV (To be completed by NRCS) Land Evaluation Information					
A. Total Acres Prime And Unique Farmland					
B. Total Acres Statewide Important or Local Important Farmland					
C. Percentage Of Farmland in County Or Local Govt. Unit To Be Converted					
D. Percentage Of Farmland in Govt. Jurisdiction With Same Or Higher Relative Value					
PART V (To be completed by NRCS) Land Evaluation Criterion					
Relative Value of Farmland To Be Converted (Scale of 0 to 100 Points)					



PART VI <i>(To be completed by Federal Agency) Site Assessment Criteria</i> <i>(Criteria are explained in 7 CFR 658.5 b. For Corridor project use form NRCS-CPA-106)</i>		Maximum Points	Site A	Site B	Site C	Site D
1. Area In Non-urban Use		(15)				
2. Perimeter In Non-urban Use		(10)				
3. Percent Of Site Being Farmed		(20)				
4. Protection Provided By State and Local Government		(20)				
5. Distance From Urban Built-up Area		(15)				
6. Distance To Urban Support Services		(15)				
7. Size Of Present Farm Unit Compared To Average		(10)				
8. Creation Of Non-farmable Farmland		(10)				
9. Availability Of Farm Support Services		(5)				
10. On-Farm Investments		(20)				
11. Effects Of Conversion On Farm Support Services		(10)				
12. Compatibility With Existing Agricultural Use		(10)				
TOTAL SITE ASSESSMENT POINTS		160	0	0	0	0
PART VII <i>(To be completed by Federal Agency)</i>						
Relative Value Of Farmland <i>(From Part V)</i>		100	0	0	0	0
Total Site Assessment <i>(From Part VI above or local site assessment)</i>		160	0	0	0	0
TOTAL POINTS <i>(Total of above 2 lines)</i>		260	0	0	0	0
Site Selected:	Date Of Selection	Was A Local Site Assessment Used? YES <input type="checkbox"/> NO <input checked="" type="checkbox"/>				
Reason For Selection:						
Name of Federal agency representative completing this form:						
Date:						

(See Instructions on reverse side)

Form AD-1006 (03-02)

Details for Part II

- Farmable land:
LCC Class 1-4
- Use local if exists

- Use National Ag Census
- Can be state or county basis
(be consistent)

PART II (To be completed by NRCS)		Date Request Received By NRCS		Person Completing Form:	
Does the site contain Prime, Unique, Statewide or Local Important Farmland? (If no, the FPPA does not apply - do not complete additional parts of this form)		YES <input checked="" type="checkbox"/>	NO <input type="checkbox"/>	Acres Irrigated	Average Farm Size
Major Crop(s)	Farmable Land In Govt. Jurisdiction Acres: %	Amount of Farmland As Defined in FPPA Acres: %			
Name of Land Evaluation System Used	Name of State or Local Site Assessment System	Date Land Evaluation Returned by NRCS			

- Default: based on
normalized NCCPI
- Use legacy system if
available

- Prime, unique, STC-approved
state/local importance





United States Department of Agriculture







2017 Census by State | 2017 Cen x +

nass.usda.gov/Publications/AgCensus/2017/Full_Report/Census_by_State/index.php

Apps SAFE COVID-19 Operatio... SSRA-dashboard-b... FPAC-dashboards-... myFPAC Intranet State Office Operati... AgEvidence Other bookmarks

[Skip to Main Content](#)

  **United States Department of Agriculture**
National Agricultural Statistics Service

Subscriptions: [National](#) | [State](#) | [News](#)

Search NASS

[Home](#) [Data & Statistics](#) [Publications](#) [Newsroom](#) [Surveys](#) [Census](#) [About NASS](#) [Contact Us](#) [Help](#)

You are here: [Home](#) / [Publications](#) / [AgCensus](#) / [2017](#) / [Full Report](#) / [Census by State](#)

Quick links for Census of Ag

[Partner Tools](#)
[Frequently Asked Questions](#) / [More Information](#)

Census of Agriculture

2017 Census by State

- **National Ag Census data (latest 2017) is available on the web**
- **Many states have created a stand-alone database or spreadsheet of relevant data for FPPA use and reference**

Natural
Resources
Conservation
Service

nrcs.usda.gov/



Details for Part IV and V

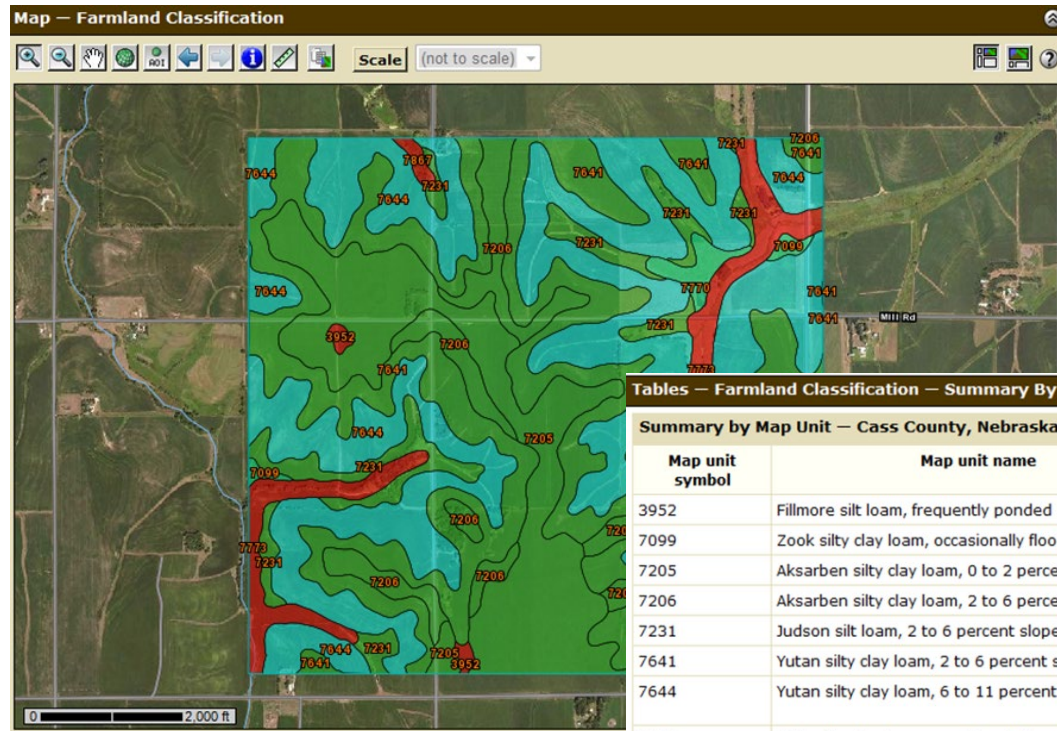
- From WSS and Part III
- State/local caveat

PART IV (To be completed by NRCS) Land Evaluation Information				
A. Total Acres Prime And Unique Farmland				
B. Total Acres Statewide Important or Local Important Farmland				
C. Percentage Of Farmland in County Or Local Govt. Unit To Be Converted				
D. Percentage Of Farmland in Govt. Jurisdiction With Same Or Higher Relative Value				
PART V (To be completed by NRCS) Land Evaluation Criterion Relative Value of Farmland To Be Converted (Scale of 0 to 100 Points)				

- Default: LE based on normalized NCCPI
- Use legacy system if available
- Use weighted average for multiple LE



Web Soil Survey Farmland Classification Report



Tables — Farmland Classification — Summary By Map Unit

Summary by Map Unit — Cass County, Nebraska (NE025)

Map unit symbol	Map unit name	Rating	Acres in AOI	Percent of AOI
3952	Fillmore silt loam, frequently ponded	Not prime farmland	4.1	0.3%
7099	Zook silty clay loam, occasionally flooded	Prime farmland if drained	5.0	0.4%
7205	Aksarben silty clay loam, 0 to 2 percent slopes	All areas are prime farmland	248.3	17.8%
7206	Aksarben silty clay loam, 2 to 6 percent slopes	All areas are prime farmland	77.9	5.6%
7231	Judson silt loam, 2 to 6 percent slopes	All areas are prime farmland	81.2	5.8%
7641	Yutan silty clay loam, 2 to 6 percent slopes, eroded	All areas are prime farmland	361.5	25.9%
7644	Yutan silty clay loam, 6 to 11 percent slopes, eroded	Farmland of statewide importance	509.1	36.5%
7770	Colo silty clay loam, occasionally flooded	Prime farmland if drained	11.4	0.8%
7773	Colo-Nodaway complex, frequently flooded	Not prime farmland	93.8	6.7%
7867	Nodaway silt loam, channeled, frequently flooded	Not prime farmland	3.8	0.3%
Totals for Area of Interest			1,396.1	100.0%

Description — Farmland Classification

Farmland classification identifies map units as prime farmland, farmland of statewide importance, farmland of local importance, or unique farmland. It identifies the location and extent of the soils that are best suited to food, feed, fiber, forage, and oilseed crops. NRCS policy and procedures on prime and unique farmlands are published in the "Federal Register," Vol. 43, No. 21, January 31, 1978.



What is a “LESA system” anyway?

- Framework to assess the relative affect of conversion of a specific parcel
- Land Evaluation (LE)
 - Relative rating (0-100) of map units in a political jurisdiction
 - Typically county-based
 - Independent of current land use
- Site assessment (SA)
 - Specific piece of land and point in time
 - Criteria in final rule (7CFR658)
- NRCS is responsible for LE



What about my LE?



- A LESA system (aka LE ratings) may already exist and simply need to be updated
- May be for a county or an entire state
- Some states put in significant time and effort to develop multi-criteria-based systems (mid-late 80s usually)
- **BUT: is that system still appropriate and usable?**
 - Updated soil mapping / underlying soils data
 - Do other criteria used still apply?



LE Development Process (full meal deal)

- Soils of an area, such as a county, are evaluated basis of their relative productivity for crops grown locally
- Land capability classifications are considered
- Important farmland maps are considered
- Soils within the local government jurisdiction are examined and given a relative value score from 1 to 100 points
- Information is concurred by the STC and published in Section II of the eFOTG



What if I don't have a legacy LE (or don't think it is appropriate)?

- Normalized National Crop Productivity Index (NCCPI) is national default
- Or use a widely accepted local crop productivity index (e.g. Iowa Corn Suitability Index)
- Be consistent – if you use one method for one county, use it for all counties
- You are welcome to work with your local partners to develop and document a more nuanced LE (**this is NOT required**)
- Assistance is available – just ask



What about SA?

- **Site Assessment (SA) is time and parcel specific**
- **SA completed by the submitting agency**
- **Assessment criteria are spelled out in 7 CFR 658.5(b)**
- **Criteria are also included in the FPPA handbook**
 - <http://www.itc.nrcs.usda.gov/wps/portal/nrcs/main/national/landuse/fppa>



Site Assessment Criteria

- “Laundry List” of site-related criteria that affect the viability of farming operations
- Range of points are assigned to each criterion
- Minor differences in criteria used for corridor projects
- Some jurisdictions have developed and published more detailed criteria for site assessment points
- Points are documented and tabulated in Section VI



Site Assessment (SA) guidance

(b) Site Assessment Criteria. Federal agencies are to use the following criteria to assess the suitability of each proposed site or design alternative for protection as farmland along with the score from the land evaluation criterion described in Sec. 658.5(a). Each criterion will be given a score on a scale of 0 to the maximum points shown. Conditions suggesting top, intermediate and bottom scores are indicated for each criterion. The agency would make scoring decisions in the context of each proposed site or alternative action by examining the site, the surrounding area, and the programs and policies of the State or local unit of government in which the site is located. Where one given location has more than one design alternative, each design should be considered as an alternative site. The site assessment criteria are:

(1) How much land is in nonurban use within a radius of 1.0 mile from where the project is intended?

- More than 90 percent - 15 points
- 90 to 20 percent - 14 to 1 point(s)
- Less than 20 percent - 0 points

(2) How much of the perimeter of the site borders on land in nonurban use?

- More than 90 percent - 10 points
- 90 to 20 percent - 9 to 1 point(s)
- Less than 20 percent - 0 points

(3) How much of the site has been farmed (managed for a scheduled harvest or timber activity) more than 5 of the last 10 years?

- More than 90 percent - 20 points
- 90 to 20 percent - 19 to 1 point(s)
- Less than 20 percent - 0 points

(4) Is the site subject to State or unit of local government policies or programs to protect farmland or covered by private programs to protect farmland?



Final Notes

- Total points (Part VII) for a proposed site is the sum of the values from Part V (LE) and Part VI (SA)
 - 160 is designated as the “affect threshold” above which alternatives should be considered
- NRCS provides information; not direction
- Ask that the form be returned when a decision is made
- FPPA is not regulatory (explicitly stated in the statute)





United States Department of Agriculture

Annual Reporting (CPA-2 and Beyond)



Natural
Resources
Conservation
Service

nrcs.usda.gov/

Annual Reporting



- The FPPA statute specifies that NRCS will provide an annual report to Congress
- The Congressional reporting requirement was administratively eliminated in 2015
 - BUT: the statute was not amended
- We (NRCS) are still required to publicly report FPPA activity on a fiscal year basis
- Official reporting form is the CPA-2
- National Bulletin out now ending on Friday, November 6th



K. Narrative Report (Comments)	NRCS	Natural Resources Conservation Service	FAA	Federal Aviation Administration
--------------------------------	------	--	-----	---------------------------------

File Home Insert Page Layout Formulas Data Review View Acrobat

Calibri 11 A A Wrap Text Number

Clipboard Cut Copy Format Painter Bold Italic Underline

Insert Delete Format AutoSum Fill Clear

Cells

U.S. DEPARTMENT OF AGRICULTURE
Natural Resources Conservation Service

EVALUATING IMPLEMENTATION OF THE
FARMLAND PROTECTION ACT (FPPA)

STATE: Fiscal Year

Person Completing Report:

Federal Agency Reporting

	I NRCS	II HUD	III FHWA	IV FEMA	V RD	VI EPA	VII FAA	VIII OSM	IX RUS	X DE	XI HRSA	XII VA	XIII EDA	XIV DOT	XV	XVI	XVII
A. AD-1006 and CPA-106 requests received																	
B. AD-1006 and CPA-106 forms completed																	
C. AD-1006 and CPA-106 returned by agency																	
D. Farmland Conversions:																	
1. Total land - acres proposed																	
Total land - acres converted																	
2. Total important farmland - acres proposed	0.0	0.0	0.0	0.0	0.0	0.0	0.0	0.0	0.0	0.0	0.0	0.0	0.0	0.0	0.0	0.0	0.0
Total important farmland - acres converted	0.0	0.0	0.0	0.0	0.0	0.0	0.0	0.0	0.0	0.0	0.0	0.0	0.0	0.0	0.0	0.0	0.0
3. Prime and Unique farmland - acres proposed																	
Prime and Unique farmland - acres converted																	
4. State and Local farmland - acres proposed																	
State and Local farmland - acres converted																	
5. Average weighted relative value proposed																	
Average weighted relative value converted																	
E. Corridors evaluated (number)																	
F. Proposals with at least one alternative to number proposed	0	0	0	0	0	0	0	0	0	0	0	0	0	0	0	0	0
G. Sites where local LESA was available	0	0	0	0	0	0	0	0	0	0	0	0	0	0	0	0	0
H. Sites where a local LESA was used for evaluation	0	0	0	0	0	0	0	0	0	0	0	0	0	0	0	0	0
I. LESA systems on State Conservation Systems																	
J. Land evaluation systems developed (total)																	
K. Narrative Report (Comments)																	

FHWA Federal Highway Administration
FEMA Federal Emergency Management Agency
RD Rural Development
EPA Environmental Protection Agency
DOT Department of Transportation
ARS Agricultural Research Service
BIA Bureau of Indian Affairs
BOP Bureau of Prisons
CBP Customs and Border Protection

RUS Rural Utilities Service
DE Department of Energy
EDA Economic Development Agency
HRSA Health Resources and Services Administration
VA Veterans Administration
USACE Army Corps of Engineers
BLM Bureau of Land Management
BOR Bureau of Reclamation
DOA Department of Army

CPA-2 Instructions

100%



FPPA Tool development

- Started the effort with a National Bulletin, [310-20-2 LNU Solicitation State-Level FPPA Processing and Reporting Tools to Inform National Level Tool Development](#)
- OK, TX, MN, WI, WV, and VT responded with tools using ArcGIS, Microsoft Forms, Excel and Access
- Ongoing Process working with State Soil Scientists from these State and staff under the National Soil Scientist
- We appreciate your feedback as you are the primary audience for this tool – please email John Andreoni, john.andreoni@usda.gov, with feedback or if you're willing to have a short conversation.





Other Issues and Questions



Issues not mentioned in the statute or rules

- Conversion of prime farmland to non-prime farmland
- Non-permanent conversion - aka How long is “irreversible”?
- How long determinations are valid – is there an “expiration date”?
- Minimum size requirements
- Prime and unique range and forest land and range and forest land of state and local importance



Brief note on NRCS Activities

- NRCS activities (including CTA) are subject to the provisions of FPPA
- Virtually all NRCS activities are exempt from FPPA under the “supports existing agricultural use” exemption
- FPPA is included in the CPA-52
- FPPA could (in theory) apply to some easements but only under very unique circumstances



State Requirements



- **Must have a designated lead FPPA contact (usually the SSS or Assistant SSS)**
- **Must develop and implement a procedure to address FPPA requests in compliance with statutory timelines**
 - **Can be at the state, area and/or local level**
- **Must develop, maintain, and make publicly available an LE system (or systems) – official location is the eFOTG, Section II**
- **Must report annually via the CPA-2**





United States Department of Agriculture

Resources and Assistance



(you are NOT on your own)



Natural
Resources
Conservation
Service

nrcs.usda.gov/



Land Use

[Cropland](#)

[Farmland Protection Policy Act](#)

[Forestry](#)

[Range & Pasture](#)

FPPA Forms and Resources

- [Farmland Protection Policy Act Manual](#)
- [Farmland Protection Policy Act, Public Law](#)
- [FPPA Rule, 7 CFR 658](#)
- [Farmland Conversion Impact Rating \(Form AD-1006\)](#)
- [Farmland Conversion Impact Rating, Corridors \(Form NRCS-CPA-106\)](#)
- [Evaluating Implementation of the Farmland Protection Act \(FPPA\) Annual Report \(for NRCS use only\), NRCS-CPA-2](#)

Annual Reports

- [Farmland Protection Policy Act 2011 Annual Report](#)
- [Farmland Protection Policy Act 2010 Annual Report](#)
- [Farmland Protection Policy Act 2009 Annual Report](#)
- [Farmland Protection Policy Act 2008 Annual Report](#)
- [Farmland Protection Policy Act 2007 Annual Report](#)
- [Farmland Protection Policy Act 2006 Annual Report](#)

Farmland Protection Policy Act

Background



The National Agricultural Land Study of 1980-81 found that millions of acres of farmland were being converted in the United States each year. The 1981 Congressional report, Compact Cities: Energy-Saving Strategies for the Eighties, identified the need for Congress to implement programs and policies to protect farmland and combat urban sprawl and the waste of energy and resources that accompanies sprawling development.

The Compact Cities report indicated that much of the sprawl was the result of programs funded by the Federal Government. With this in mind, Congress passed the Agriculture and Food Act of 1981 (Public Law 97-98)

containing the Farmland Protection Policy Act (FPPA) subtitle I of Title XV, Section 1539-1549. The final rules and regulations were published in the Federal Register on June 17, 1994.

Purpose

The FPPA is intended to minimize the impact Federal programs have on the unnecessary and irreversible conversion of farmland to nonagricultural uses. It assures that to the extent possible federal programs are administered to be compatible with state, local units of government, and private programs and policies to protect farmland. Federal agencies are required to develop and review their policies and procedures to implement the FPPA every two years.

The FPPA does not authorize the Federal Government to regulate the use of private or nonfederal land or, in any way, affect the property rights of owners.

For the purpose of FPPA, farmland includes prime farmland, unique farmland, and land of statewide or local importance. Farmland subject to FPPA requirements does not have to be currently used for cropland. It can be forest land, pastureland, cropland, or other land, but not water or urban built-up land.

Projects and Activities

Projects are subject to FPPA requirements if they may irreversibly convert farmland (directly or indirectly) to nonagricultural use and are completed by a Federal agency or with assistance from a Federal agency.



Other resources



- **FPPA Manual**
 - Title 310, Part 523 (NRCS eDirectives)
 - Under review in FY2021
 - Goal: publish by the end of the FY
 - Reviewer assistance is welcome
- **FPPA National Program Manager**
 - Michael Robotham, National Soil Scientist
 - Michael.Robotham@usda.gov, 202-720-5547, Skype or Teams
 - Don't hesitate to ask questions!



A tropical beach scene with a rainbow arching over lush green mountains. The rainbow is positioned in the upper left quadrant, arching from the left side of the frame towards the center. The mountains are covered in dense green vegetation and are partially shrouded in mist or low clouds. The foreground shows a sandy beach and the ocean with gentle waves. The sky is overcast with grey clouds.

Questions?



United States Department of Agriculture

Extra slides



Natural
Resources
Conservation
Service

nrcs.usda.gov/

Normalized LE Development

- Using Web Soil Survey, set AOI to county
- Go to the Soil Data Explorer tab
- Under the **Land Classification** tab (NCCPI) or the **Vegetative Productivity** tab (e.g. Iowa Corn Suitability Index), select the appropriate report and view the rating
- Highlight the table, copy and paste it into EXCEL



Intro to Soils

Suitabilities and Limitations for Use

Soil Properties and Qualities

Soil Reports

Search

Suitabilities and Limitations Ratings

Open All Close All

Building Site Development

Construction Materials

Disaster Recovery Planning

Land Classifications

Land Management

Military Operations

Recreational Development

Sanitary Facilities

Soil Health

Vegetative Productivity

Crop Productivity Index

Forest Productivity (Cubic Feet per Acre per Year)

Forest Productivity (Tree Site Index)

Iowa Corn Suitability Rating CSR2 (IA)

View Description View Rating

View Options

Map ☒

Table ☒

Description of Rating ☒

Rating Options ☒

Map — Iowa Corn Suitability Rating CSR2 (IA)

Scale (not to scale)

Tables — Iowa Corn

Tables — Iowa Corn Suitability Rating CSR2 (IA) — Summary By Map Unit

Summary by Map Unit — Cedar County, Iowa (IA031)

Summary by Map Unit — Cedar County, Iowa (IA031)

Map unit symbol	Map unit name	Rating	Acres in AOI	Percent of AOI
8B	Judson silty clay loam, 2 to 5 percent slopes	94	1,615.0	0.4%
41B	Sparta loamy fine sand, 2 to 5 percent slopes	39	381.3	0.1%
41C	Sparta loamy fine sand, 5 to 9 percent slopes	34	501.3	0.1%
41E	Sparta loamy fine sand, 9 to 18 percent slopes	6	250.3	0.1%
63B	Chelsea loamy fine sand, 2 to 5 percent slopes	19	521.8	0.1%
63C	Chelsea loamy fine sand, 5 to 9 percent slopes	14	1,213.1	0.3%
63E	Chelsea loamy fine sand, 9 to 18 percent slopes	5	1,086.6	0.3%
65D2	Lindley loam, 9 to 14 percent slopes, moderately eroded	43	583.7	0.2%
65E2	Lindley loam, 14 to 18 percent slopes, moderately eroded	31	1,140.5	0.3%
65F2	Lindley loam, 18 to 25 percent slopes, moderately eroded	10	423.4	0.1%
83B	Kenyon loam, 2 to 5 percent slopes	90	1,626.8	0.4%
83C	Kenyon loam, 5 to 9 percent slopes	85	574.4	0.2%
83C2	Kenyon loam, 5 to 9 percent slopes, eroded	84	984.3	0.3%
88	Nevin silty clay loam, 0 to 2 percent slopes, rarely flooded	94	545.7	0.1%
110C	Lamont fine sandy loam, 2 to 9 percent slopes	47	398.9	0.1%
110E	Lamont fine sandy loam, 9 to 18 percent slopes	16	419.0	0.1%
118	Garwin silty clay loam, 0 to 2 percent slopes	90	3,170.4	0.9%



Normalize from 0-100 for the jurisdiction (LE is “relative”)

File Home Insert Page Layout Formulas Data Review View JMP Acrobat						
Clipboard		Font		Alignment		Number
Cut Copy Paste Format Painter		Calibri 11 Bold Italic Underline Text Color Background Color		Wrap Text Merge & Center		Number \$ % , .00 .00
						Conditional Formatting Format as Table Cell Styles
F2 = (E2/0.88)*100						
	A	B	C	D	E	F
1	Map_Symbol	Map_Unit_Name	Map_Unit_Acres	Non-irr_LCC	Corn_Index	INDEX
2	30214	Vigar loam, 2 to 5 percent slopes, rarely flooded	4937	2e	0.88	100
3	36018	Kennebec and Fatima soils, 0 to 2 percent slopes, frequently flooded	8	3w	0.87	99
4	36031	Nodaway silt loam, 0 to 2 percent slopes, frequently flooded	152	3w	0.86	98
5	36050	Zook silty clay loam, 0 to 2 percent slopes, occasionally flooded	81	2w	0.85	97
6	36042	Vesser silt loam, 0 to 2 percent slopes, occasionally flooded	17324	3w	0.81	92
7	56008	Zook silty clay loam, overwash, 0 to 2 percent slopes, occasionally flooded	6806	2w	0.8	91
8	64033	Vigar-Zook-Excello complex, 0 to 5 percent slopes	4384	3w	0.7985	91
9	30217	Vigar-Zook-Nodaway complex, 1 to 5 percent slopes	152	4w	0.784	89
10	36064	Floris silt loam, 0 to 2 percent slopes, occasionally flooded	407	2w	0.75	85
11	66081	Dockery and Tice silt loams, 0 to 2 percent slopes, occasionally flooded	16420	2w	0.7255	82
12	36025	Landes loam, 0 to 2 percent slopes, frequently flooded	136	3w	0.7	80
13	30057	Gara loam, 14 to 20 percent slopes	488	6e	0.69	78
14	54000	Chariton silt loam, 0 to 2 percent slopes, rarely flooded	230	3w	0.69	78
15	36015	Floris loam, 0 to 2 percent slopes, frequently flooded	3577	3w	0.68	77
16	13505	Blackoar silt loam, 0 to 2 percent slopes, occasionally flooded	202	2w	0.67	76
17	36003	Arbela silt loam, 0 to 2 percent slopes, occasionally flooded	29	3w	0.66	75
18	36062	Arbela silty clay loam, 0 to 2 percent slopes, occasionally flooded	3565	3w	0.61	69
19	60106	Gifford silty clay loam, 2 to 5 percent slopes	467	3e	0.61	69
20	66075	Chequest silty clay loam, 0 to 2 percent slopes, occasionally flooded	49	3w	0.59	67
21	60061	Bevier silty clay loam, 3 to 8 percent slopes	5706	3e	0.57	65
22	30106	Kilwinning silt loam, 1 to 5 percent slopes	7	3e	0.56	64
23	50001	Armstrong loam, 5 to 9 percent slopes, eroded	63203	3e	0.55	63
24	30175	Pershing silty clay loam, 2 to 5 percent slopes, eroded	350	3e	0.54	61
25	30054	Gara clay loam, 9 to 14 percent slopes, eroded	135	4e	0.53	60
26	66109	Wabash silty clay loam, 0 to 2 percent slopes, overwash, occasionally flooded	1647	3w	0.52	59
27	60107	Gifford silty clay loam, 5 to 9 percent slopes, eroded	1940	3e	0.51	58
28	50012	Putnam silt loam, 0 to 1 percent slopes	1851	3w	0.5	57
29	30058	Gara loam, 14 to 20 percent slopes, eroded	657	6e	0.5	57