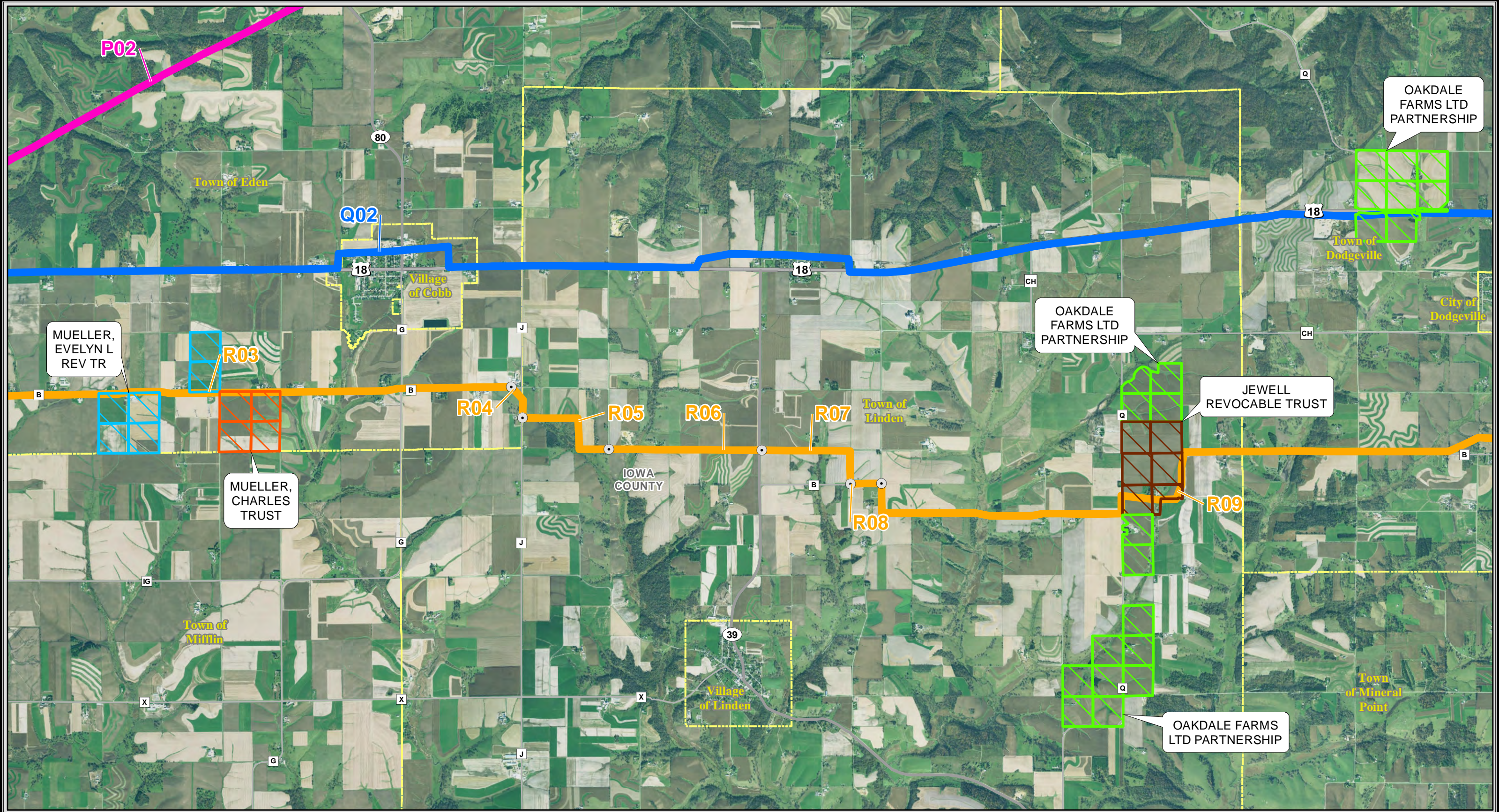


Ex.-JJI-Jewell-2

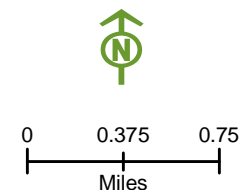
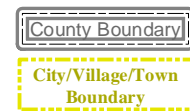
Attachment 1 to Jewell Jinkins Request 1 - Maps



PROJECT RELATED DATA

- Preferred Route
- Alternate Route
- Common Route Segments
- Other Route Segments
- Route Subsegment ID
- Route Subsegment Node

- JEWELL REVOCABLE TRUST
- MUELLER, CHARLES TRUST
- MUELLER, EVELYN L REV TR
- OAKDALE FARMS LTD PARTNERSHIP

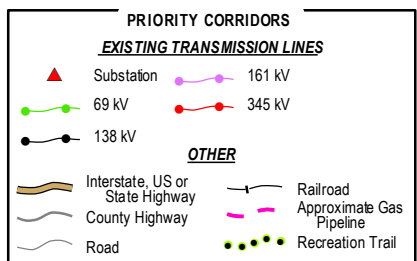
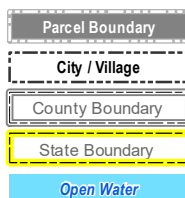
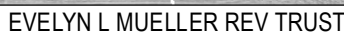


MAP OVERVIEW
Jewell Jenkins Intervenor

CARDINAL-HICKORY CREEK
TRANSMISSION LINE PROJECT

APRIL 2019





Data Sources: ATC, ITC, DPC, WDNR, WDOT, PSCW, FAA, County LIOs.



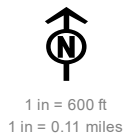
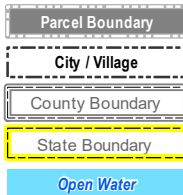
CHARLES MUELLER TRUST



CARDINAL-HICKORY CREEK TRANSMISSION LINE PROJECT

- Proposed Preferred Route Centerline
- Proposed Preferred Route 150' Corridor
- Proposed Alternate Route Centerline
- Proposed Alternate Route 150' Corridor
- Proposed Other Route Centerline
- Proposed Other Route 150' Corridor

Proposed Hill Valley Substation Areas



PRIORITY CORRIDORS	
EXISTING TRANSMISSION LINES	
Substation	161 kV
69 kV	345 kV
138 kV	
OTHER	
Interstate, US or State Highway	Railroad
County Highway	Approximate Gas Pipeline
Road	Recreation Trail

Accuracy and scale of information presented in this map document is based on preliminary engineering design and is intended for reference purposes only. Map is not intended to be used for legal, survey or engineering purposes.

Data Sources: ATC, ITC, DPC, WDNR, WDOT, PSCW, FAA, County LIOS



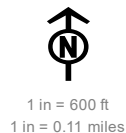
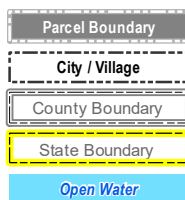
ALAN & MARCIA JEWELL



CARDINAL-HICKORY CREEK TRANSMISSION LINE PROJECT

- Proposed Preferred Route Centerline
- Proposed Preferred Route 150' Corridor
- Proposed Alternate Route Centerline
- Proposed Alternate Route 150' Corridor
- Proposed Other Route Centerline
- Proposed Other Route 150' Corridor

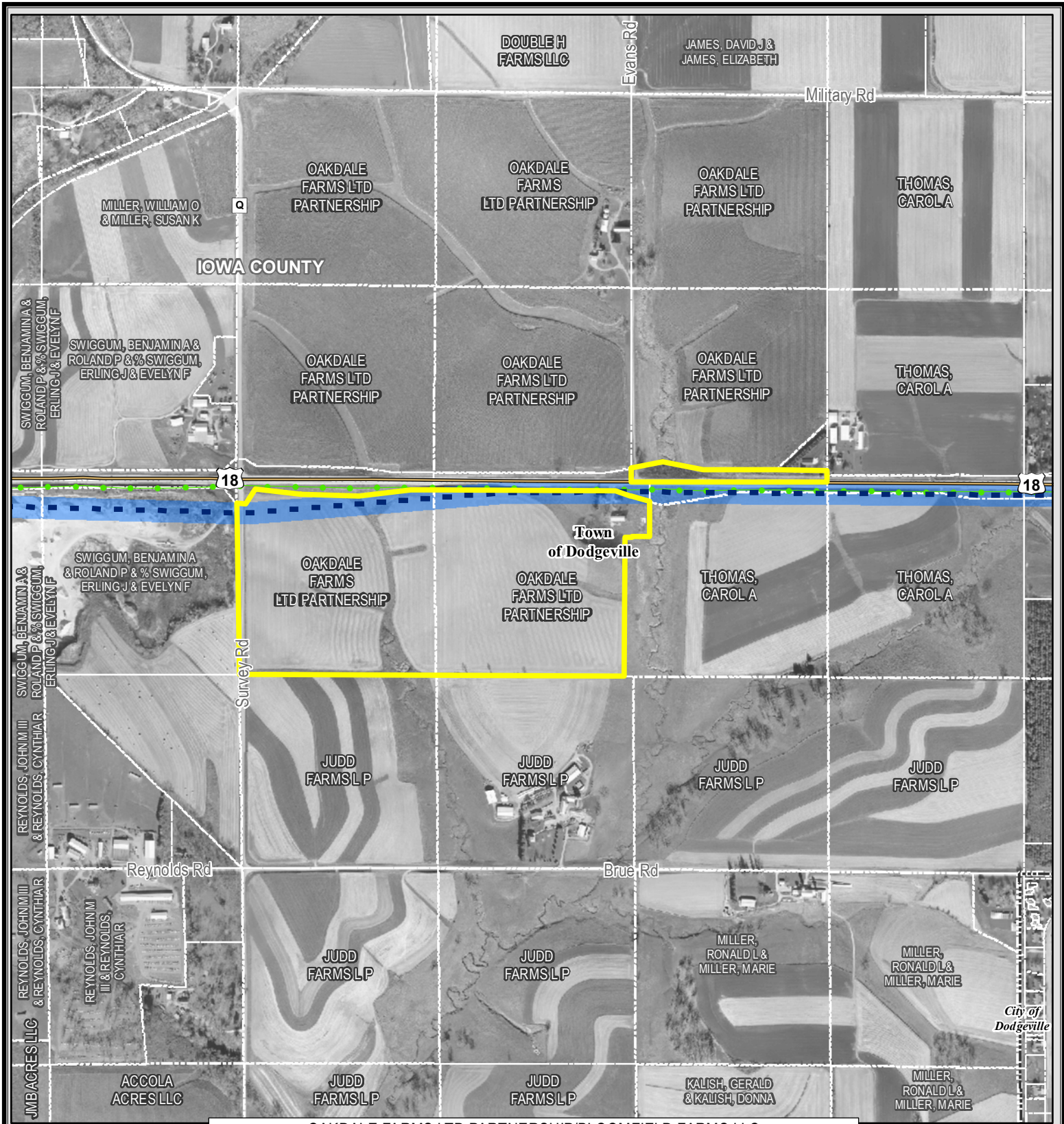
Proposed Hill Valley
Substation Areas



PRIORITY CORRIDORS	
EXISTING TRANSMISSION LINES	
▲ Substation	— 161 kV
— 69 kV	— 345 kV
— 138 kV	
OTHER	
— Interstate, US or State Highway	— Railroad
— County Highway	— Approximate Gas Pipeline
— Road	● Recreation Trail

Accuracy and scale of information presented in this map document is based on preliminary engineering design and is intended for reference purposes only. Map is not intended to be used for legal, survey or engineering purposes.

Data Sources: ATC, ITC, DPC, WDNR, WDOT, PSCW, FAA, County LIOs



OAKDALE FARMS LTD PARTNERSHIP/BLOOMFIELD FARMS LLC



CARDINAL-HICKORY CREEK TRANSMISSION LINE PROJECT

- Proposed Preferred Route Centerline
- Proposed Preferred Route 150' Corridor
- Proposed Alternate Route Centerline
- Proposed Alternate Route 150' Corridor
- Proposed Other Route Centerline
- Proposed Other Route 150' Corridor

Proposed Hill Valley Substation Areas

- Parcel Boundary
- City / Village
- County Boundary
- State Boundary
- Open Water
- Environmentally Sensitive Lands

1 in = 900 ft
1 in = 0.17 miles

- PRIORITY CORRIDORS**
- EXISTING TRANSMISSION LINES**
- Substation
 - 69 kV
 - 138 kV
 - 161 kV
 - 345 kV
- OTHER**
- Interstate, US or State Highway
 - County Highway
 - Road
 - Railroad
 - Approximate Gas Pipeline
 - Recreation Trail

Accuracy and scale of information presented in this map document is based on preliminary engineering design and is intended for reference purposes only. Map is not intended to be used for legal, survey or engineering purposes.

Data Sources: ATC, ITC, DPC, WDNR, WDOT, PSCW, FAA, County LIOS