

Legend

Proposed Facilities

- Subsegment Endpoints
- 345kV Overhead Lines
- Access Routes
- Laydown Yards
- Substation Fence
- Proposed Substation Site

Existing Facilities

- Substations
- Existing Transmission Lines
- Natural Gas Pipelines
- Comm Towers
- Airports
- Heliports
- Seaplane Bases

Land Conservation

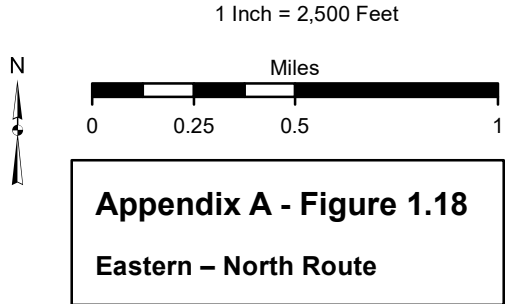
- Easement & Land Trust
- Public Parks & Recreation
- State Natural Area
- Wildlife Area / Refuge
- Waterfowl / Wetland Management District
- Tribal Land
- USFWS Managed Land
- WDNR Managed Land
- Managed Forest Law

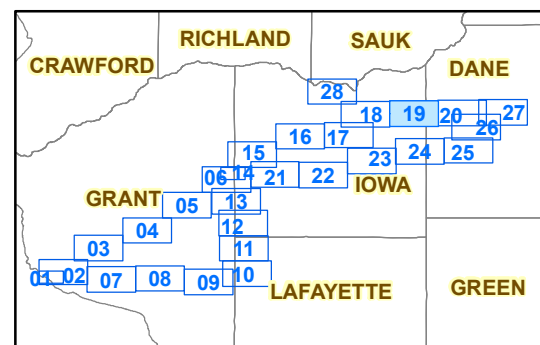
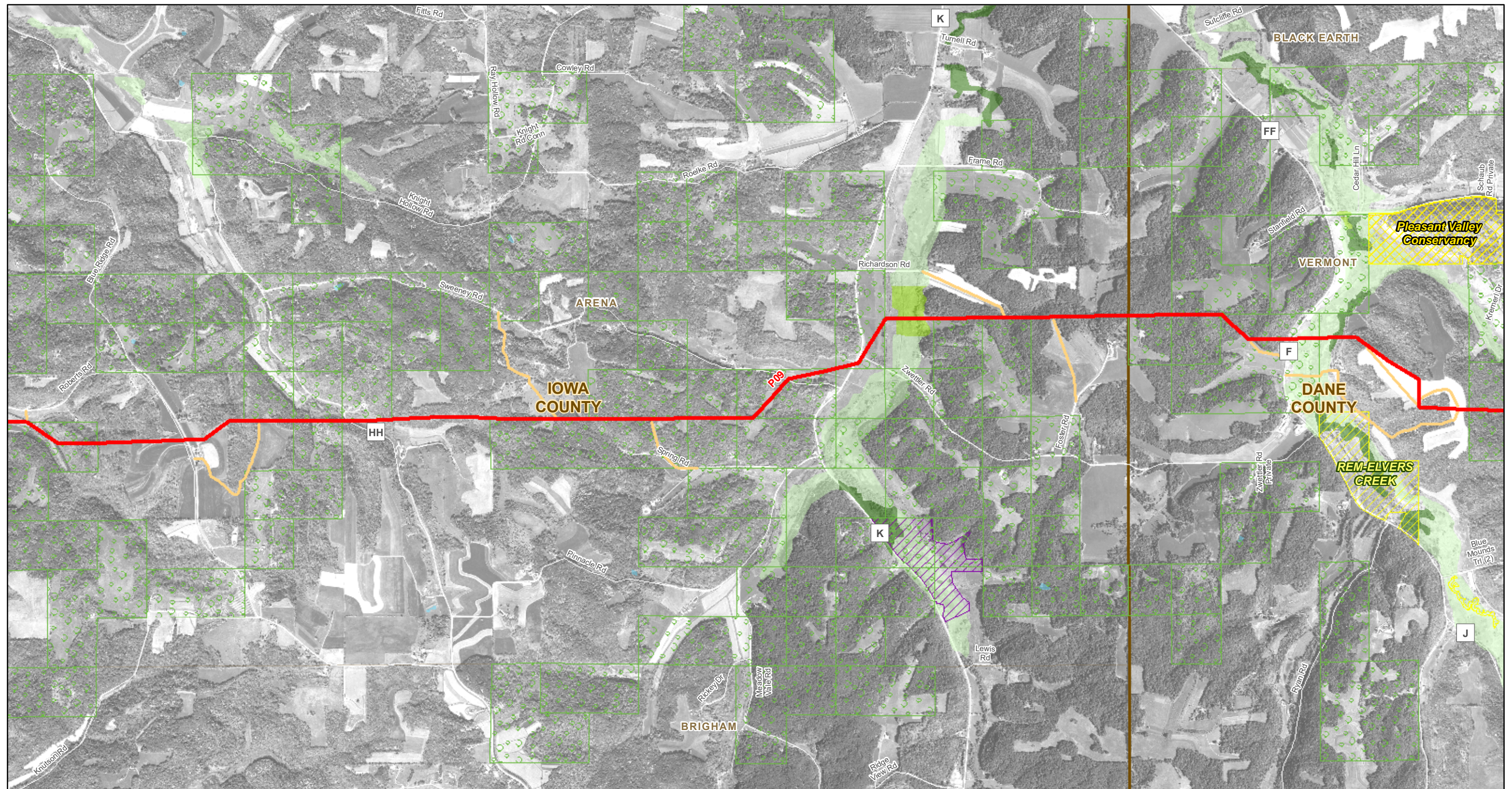
Wetlands and Waterways

- Forested Wetland
- Scrub/Shrub Wetland
- Emergent/Wet Meadow
- Flats/Unvegetated Wet Soil
- Aquatic Bed
- Open Water

Notes:

- Aerial photos data source: NAIP, 2013
- Wetlands are shown based on the Wisconsin Wetland Inventory (WWI). Wetlands impacts described in Volume 1 are calculated based on field wetland delineations and other sources.
- Rights-of-way width for existing transmission lines are not to scale.
- Boundaries for USFWS managed lands are approximate.





Legend

Proposed Facilities

- Subsegment Endpoints
- 345kV Overhead Lines
- Access Routes
- Laydown Yards
- Substation Fence
- Proposed Substation Site

Existing Facilities

- ▲ Substations
- Existing Transmission Lines
- Natural Gas Pipelines
- ⚡ Comm Towers
- ✈ Airports
- ✈ Heliports
- ✈ Seaplane Bases

Land Conservation

- Easement & Land Trust
- Public Parks & Recreation
- State Natural Area
- Wildlife Area / Refuge
- Waterfowl / Wetland Management District
- Tribal Land
- USFWS Managed Land
- WDNR Managed Land
- Managed Forest Law

Wetlands and Waterways

- Forested Wetland
- Scrub/Shrub Wetland
- Emergent/Wet Meadow
- Flats/Unvegetated Wet Soil
- Aquatic Bed
- Open Water

Notes:

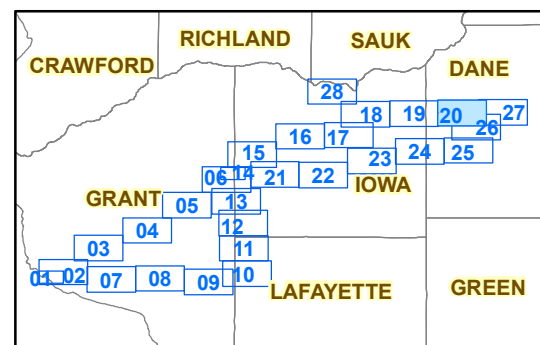
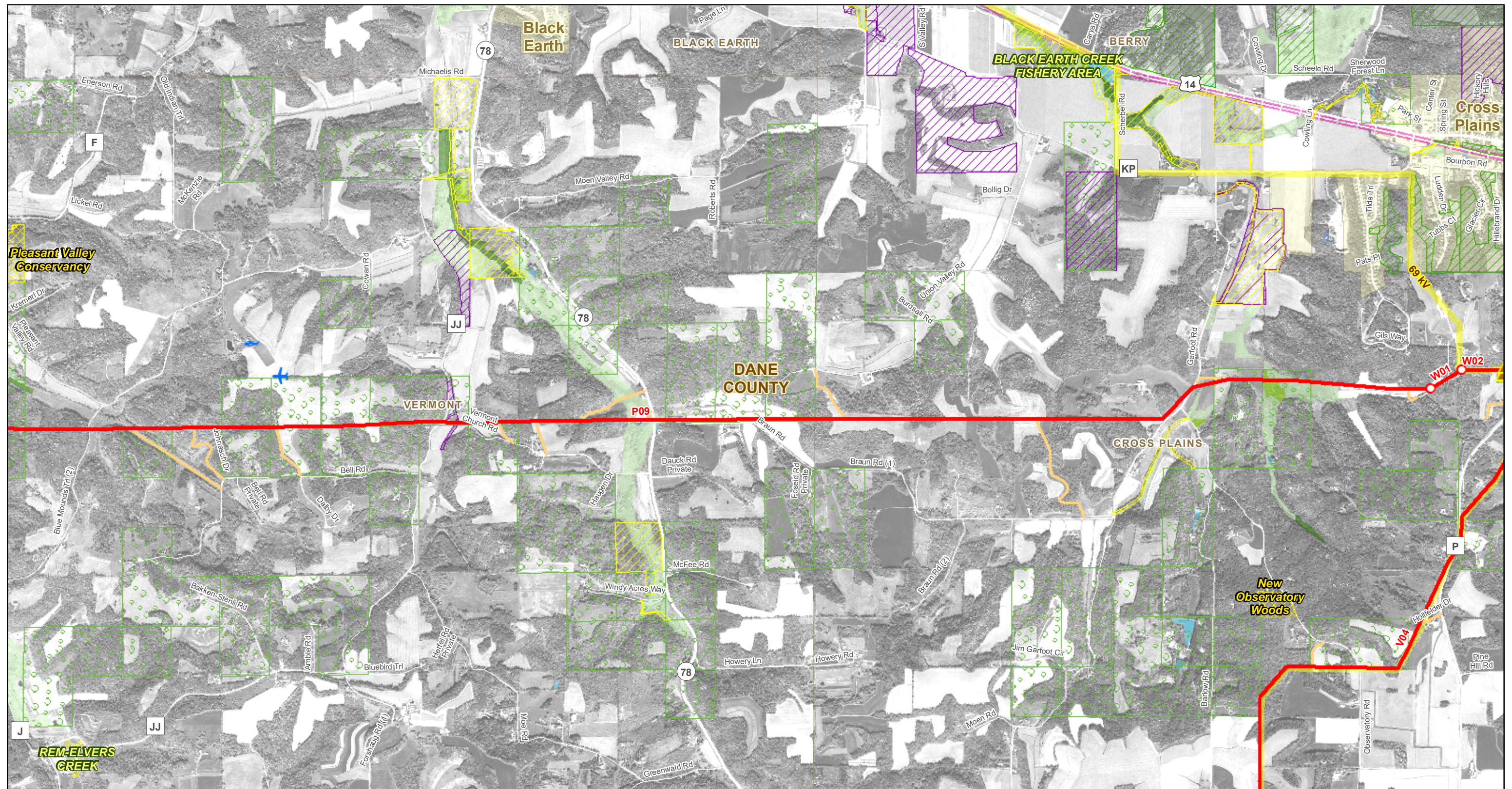
- Aerial photos data source: NAIP, 2013
- Wetlands are shown based on the Wisconsin Wetland Inventory (WWI). Wetlands impacts described in Volume 1 are calculated based on field wetland delineations and other sources.
- Rights-of-way width for existing transmission lines are not to scale.
- Boundaries for USFWS managed lands are approximate.



1 Inch = 2,500 Feet



Appendix A - Figure 1.19
Eastern – North Route



Legend

Proposed Facilities

- Subsegment Endpoints
- 345kV Overhead Lines
- Access Routes
- Laydown Yards
- Substation Fence
- Proposed Substation Site

Existing Facilities

- ▲ Substations
- Existing Transmission Lines
- Natural Gas Pipelines
- ⚡ Comm Towers
- ✈ Airports
- ✈ Heliports
- ✈ Seaplane Bases

Land Conservation

- Easement & Land Trust
- Public Parks & Recreation
- State Natural Area
- Wildlife Area / Refuge
- Waterfowl / Wetland Management District
- Tribal Land
- USFWS Managed Land
- WDNR Managed Land
- Managed Forest Law

Wetlands and Waterways

- Forested Wetland
- Scrub/Shrub Wetland
- Emergent/Wet Meadow
- Flats/Unvegetated Wet Soil
- Aquatic Bed
- Open Water

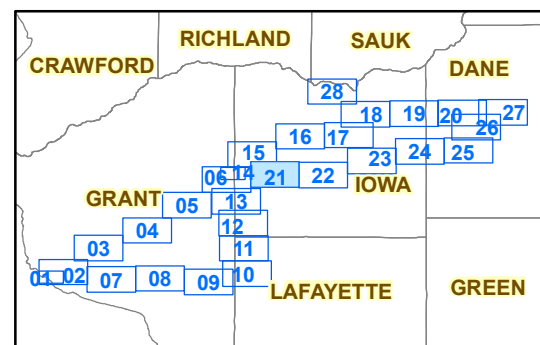
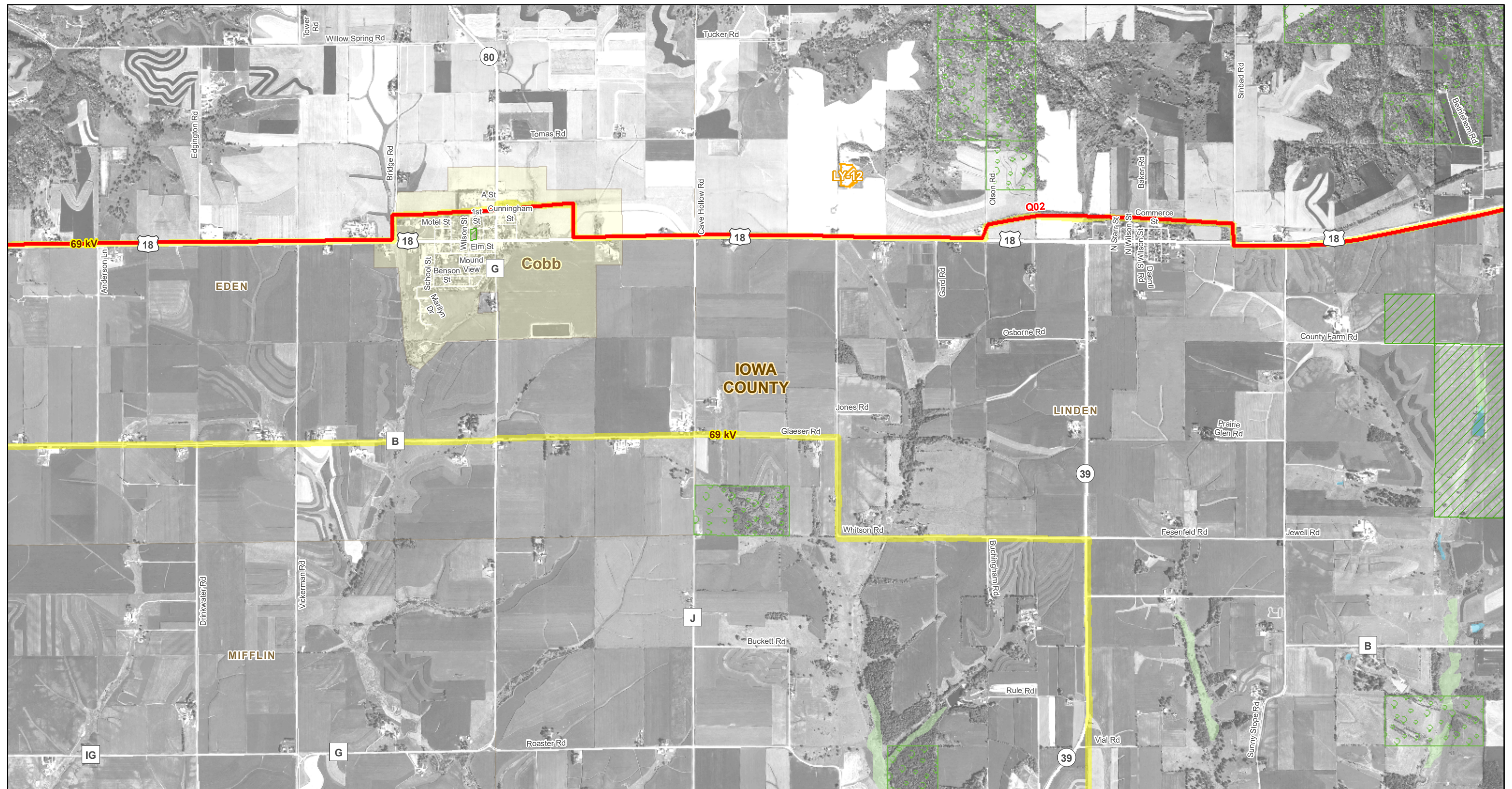
Notes:

- Aerial photos data source: NAIP, 2013
- Wetlands are shown based on the Wisconsin Wetland Inventory (WWI). Wetlands impacts described in Volume 1 are calculated based on field wetland delineations and other sources.
- Rights-of-way width for existing transmission lines are not to scale.
- Boundaries for USFWS managed lands are approximate.

1 Inch = 2,500 Feet



Appendix A - Figure 1.20
Eastern – North Route



Legend

Proposed Facilities

- Subsegment Endpoints
- 345kV Overhead Lines
- Access Routes
- Laydown Yards
- Substation Fence
- Proposed Substation Site

Existing Facilities

- Substations
- Existing Transmission Lines
- Natural Gas Pipelines
- Comm Towers
- Airports
- Heliports
- Seaplane Bases

Land Conservation

- Easement & Land Trust
- Public Parks & Recreation
- State Natural Area
- Wildlife Area / Refuge
- Waterfowl / Wetland Management District
- Tribal Land
- USFWS Managed Land
- WDNR Managed Land
- Managed Forest Law

Wetlands and Waterways

- Forested Wetland
- Scrub/Shrub Wetland
- Emergent/Wet Meadow
- Flats/Unvegetated Wet Soil
- Aquatic Bed
- Open Water

Notes:

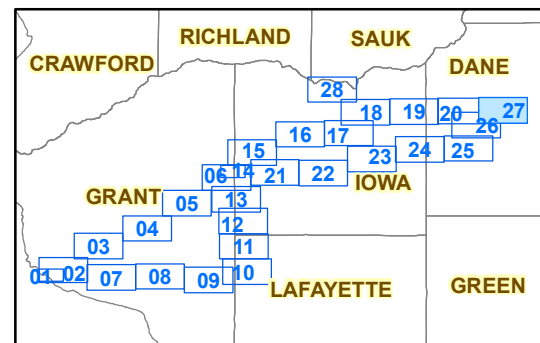
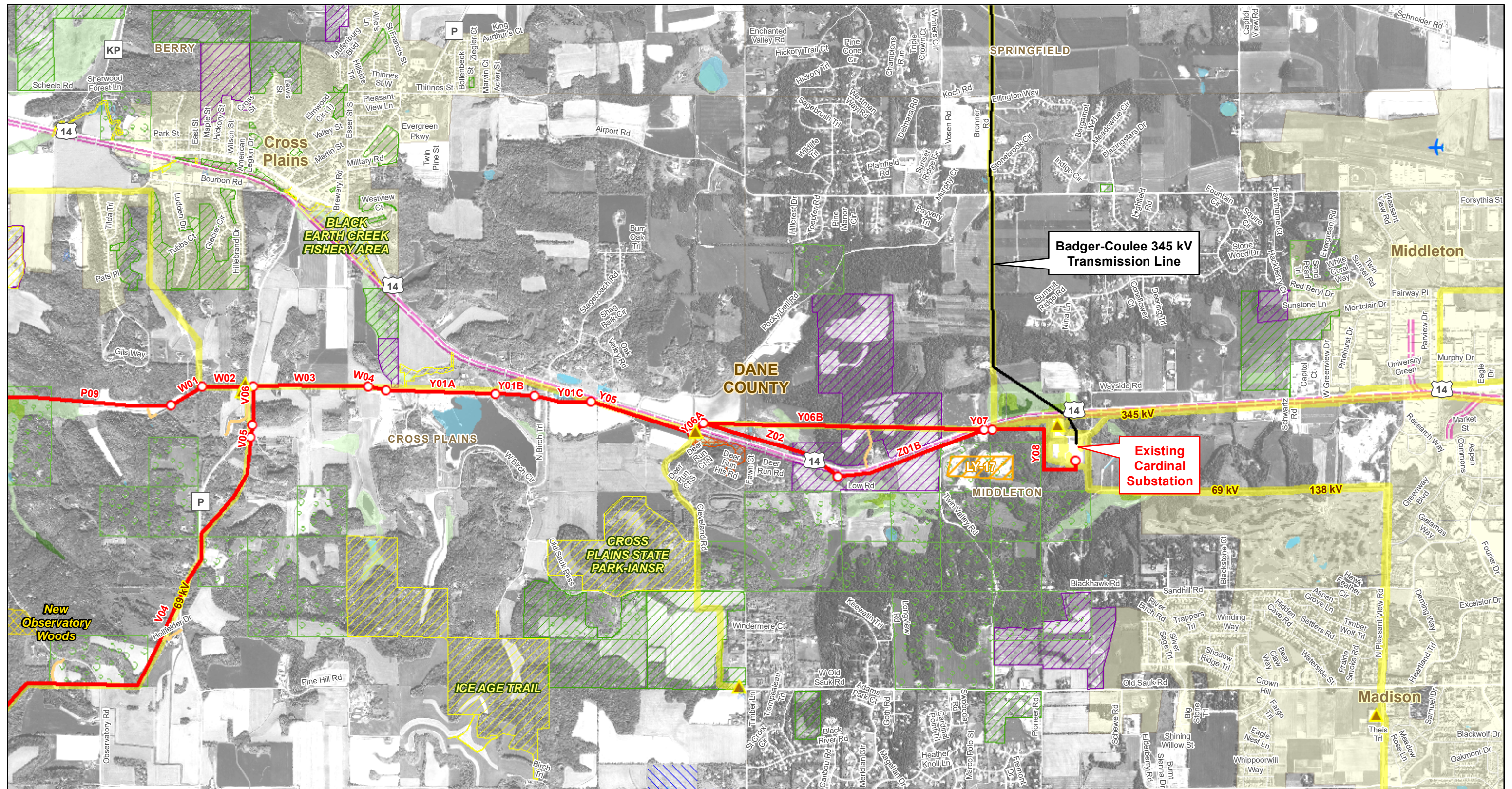
- Aerial photos data source: NAIP, 2013
- Wetlands are shown based on the Wisconsin Wetland Inventory (WWI). Wetlands impacts described in Volume 1 are calculated based on field wetland delineations and other sources.
- Rights-of-way width for existing transmission lines are not to scale.
- Boundaries for USFWS managed lands are approximate.



1 Inch = 2,500 Feet



Appendix A - Figure 1.21
Eastern – South Route



Legend

Proposed Facilities

- Subsegment Endpoints
- 345kV Overhead Lines
- Access Routes
- Laydown Yards
- Substation Fence
- Proposed Substation Site

Existing Facilities

- Substations
- Existing Transmission Lines
- Natural Gas Pipelines
- Comm Towers
- Airports
- Heliports
- Seaplane Bases

Land Conservation

- Easement & Land Trust
- Public Parks & Recreation
- State Natural Area
- Wildlife Area / Refuge
- Waterfowl / Wetland Management District
- Tribal Land
- USFWS Managed Land
- WDNR Managed Land
- Managed Forest Law

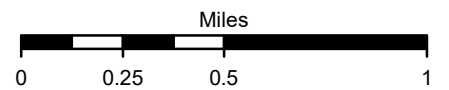
Wetlands and Waterways

- Forested Wetland
- Scrub/Shrub Wetland
- Emergent/Wet Meadow
- Flats/Unvegetated Wet Soil
- Aquatic Bed
- Open Water

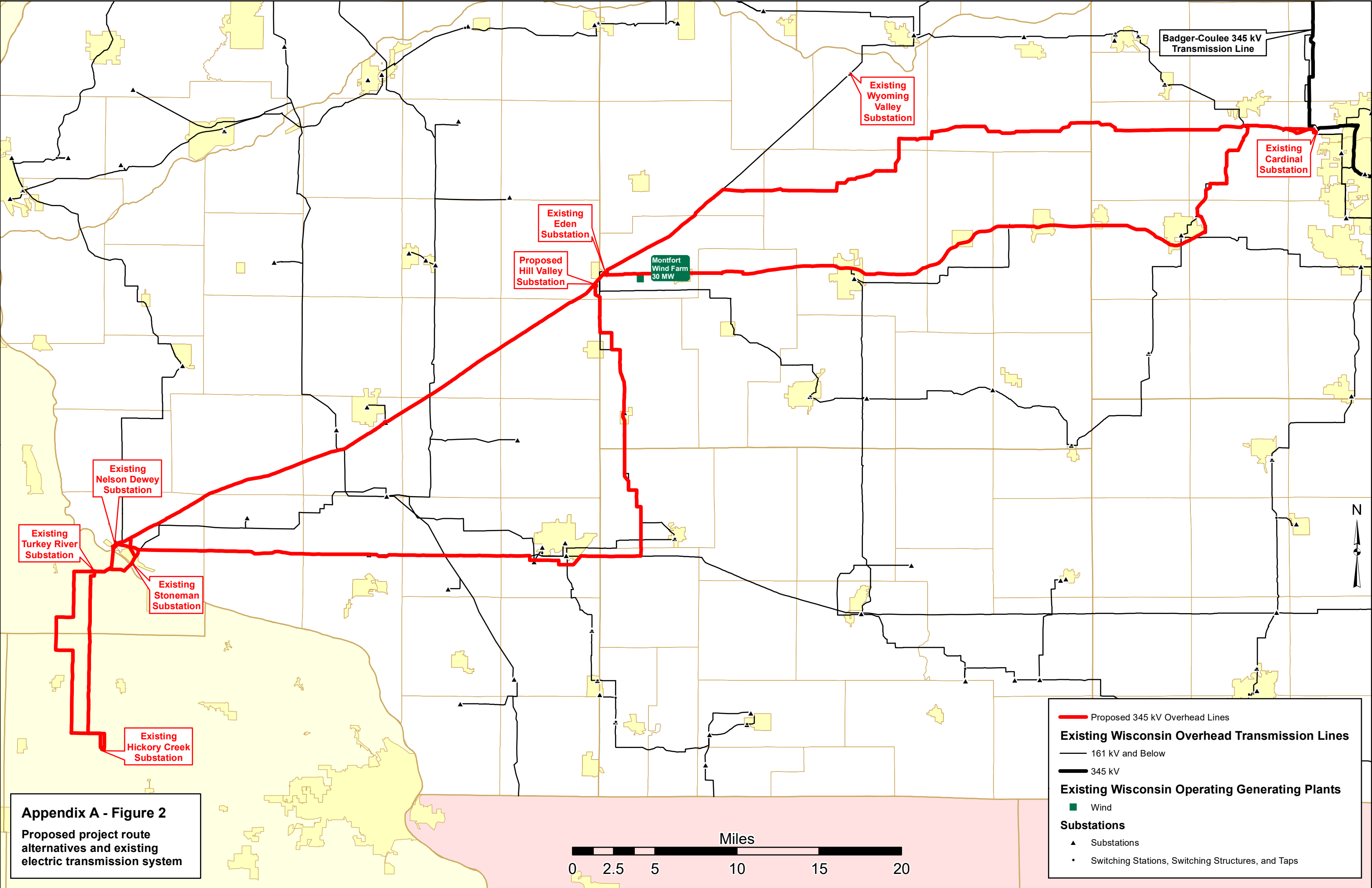
Notes:

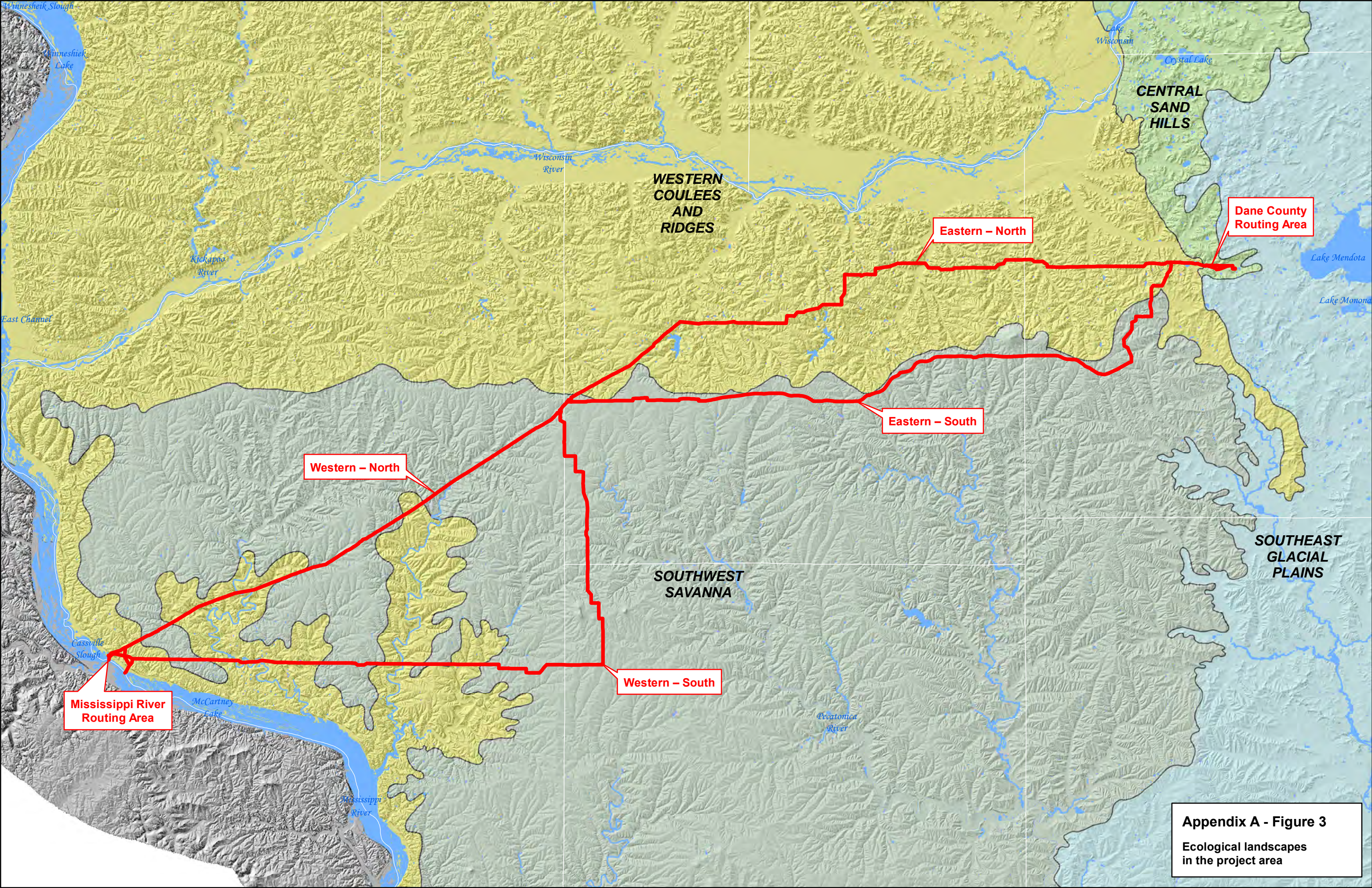
- Aerial photos data source: NAIP, 2013
- Wetlands are shown based on the Wisconsin Wetland Inventory (WWI). Wetlands impacts described in Volume 1 are calculated based on field wetland delineations and other sources.
- Rights-of-way width for existing transmission lines are not to scale.
- Boundaries for USFWS managed lands are approximate.

1 Inch = 2,500 Feet

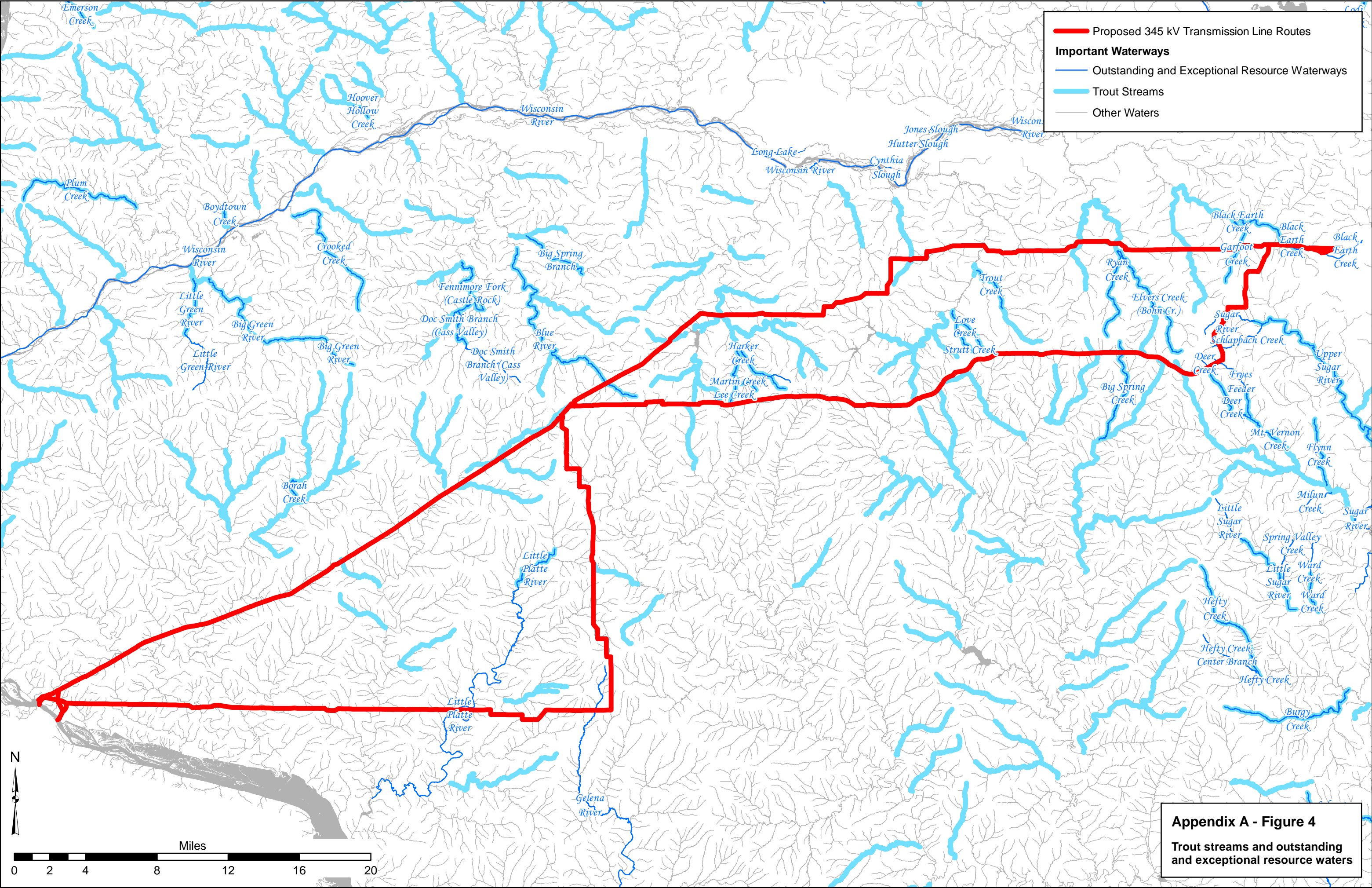


Appendix A - Figure 1.27
Dane County Routing Area





Appendix A - Figure 3
Ecological landscapes
in the project area



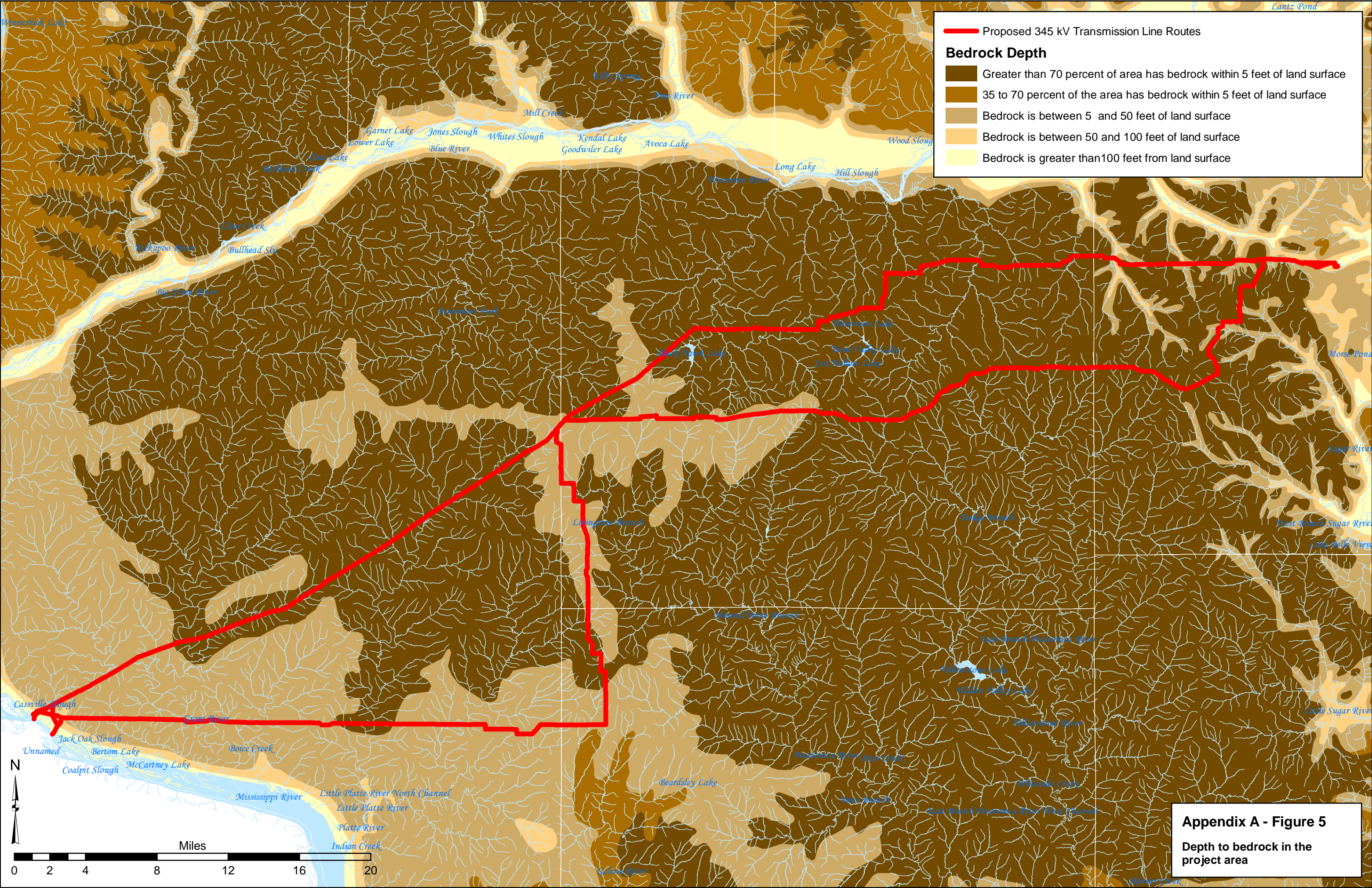
Proposed 345 kV Transmission Line Routes

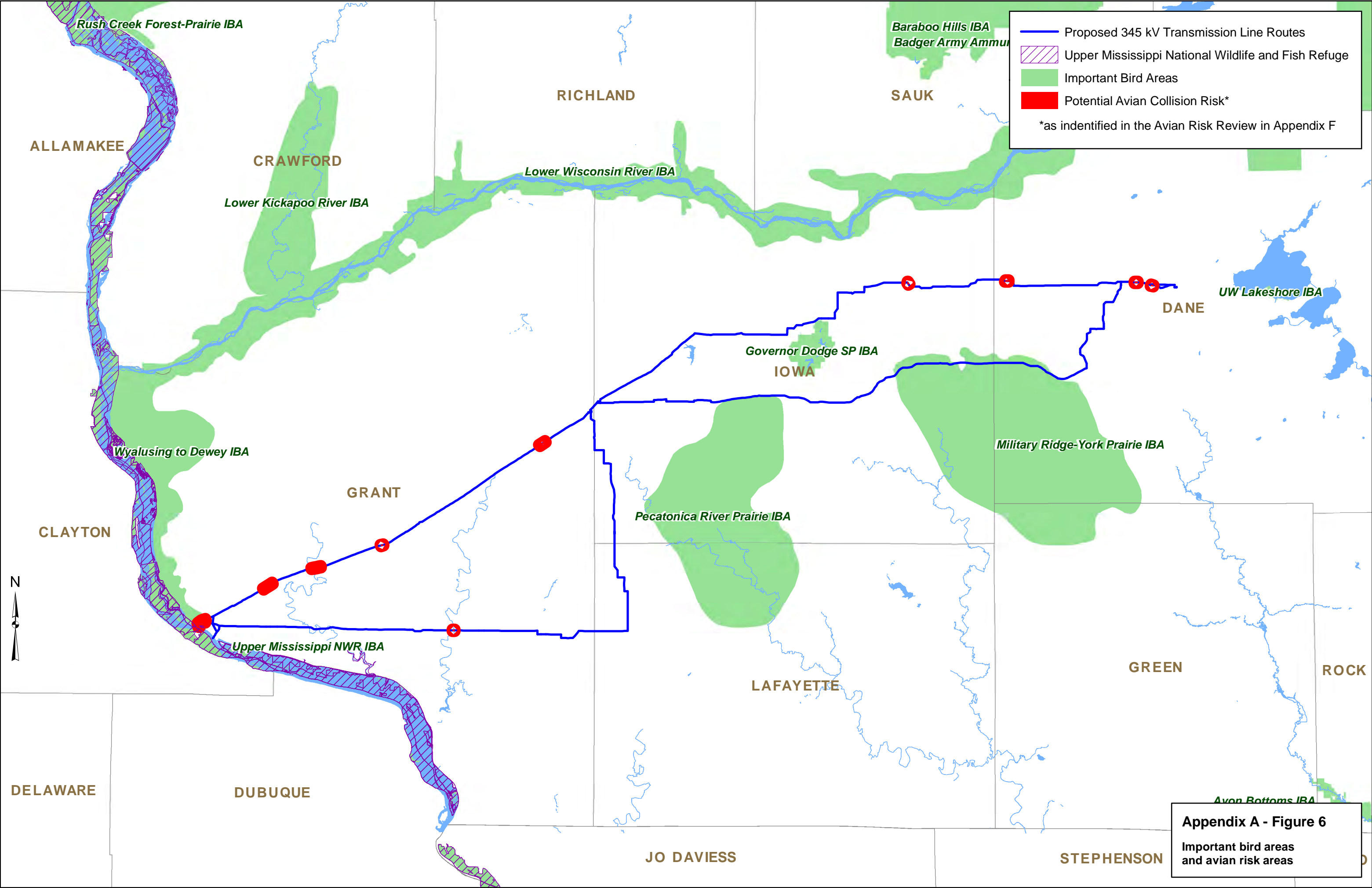
Important Waterways

- Outstanding and Exceptional Resource Waterways
- Trout Streams
- Other Waters

Appendix A - Figure 4

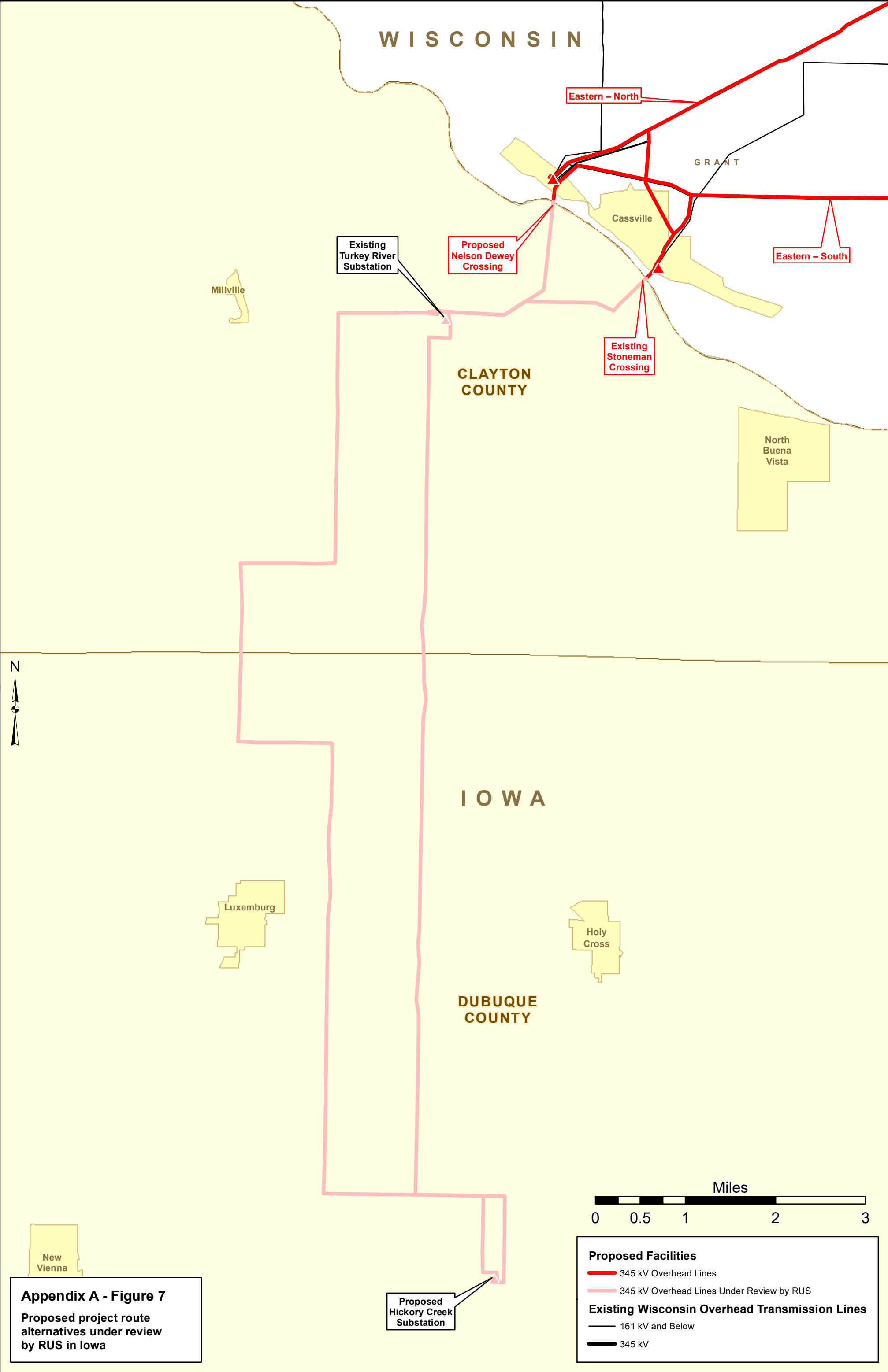
Trout streams and outstanding and exceptional resource waters

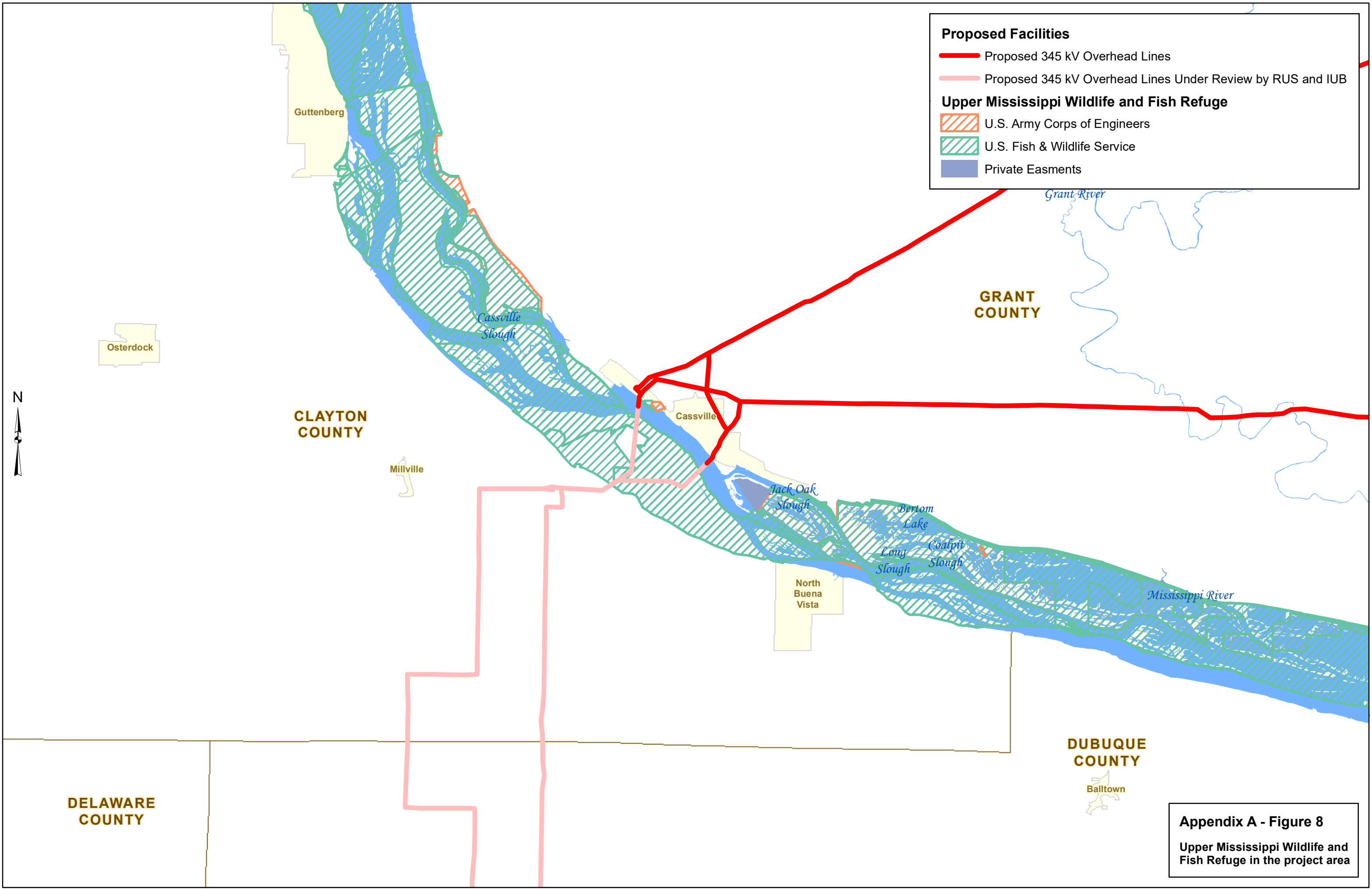




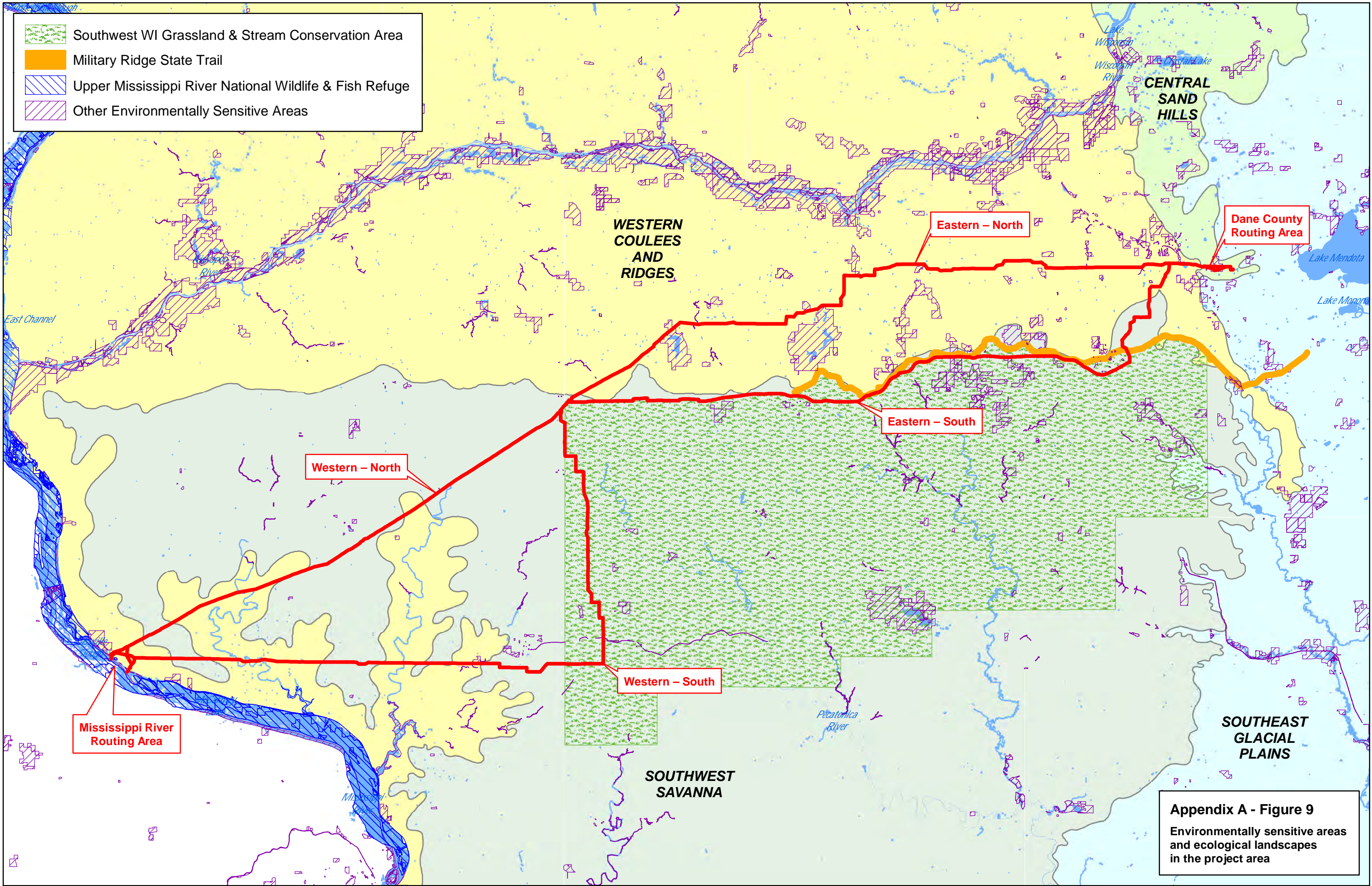
Appendix A - Figure 6

Important bird areas
and avian risk areas

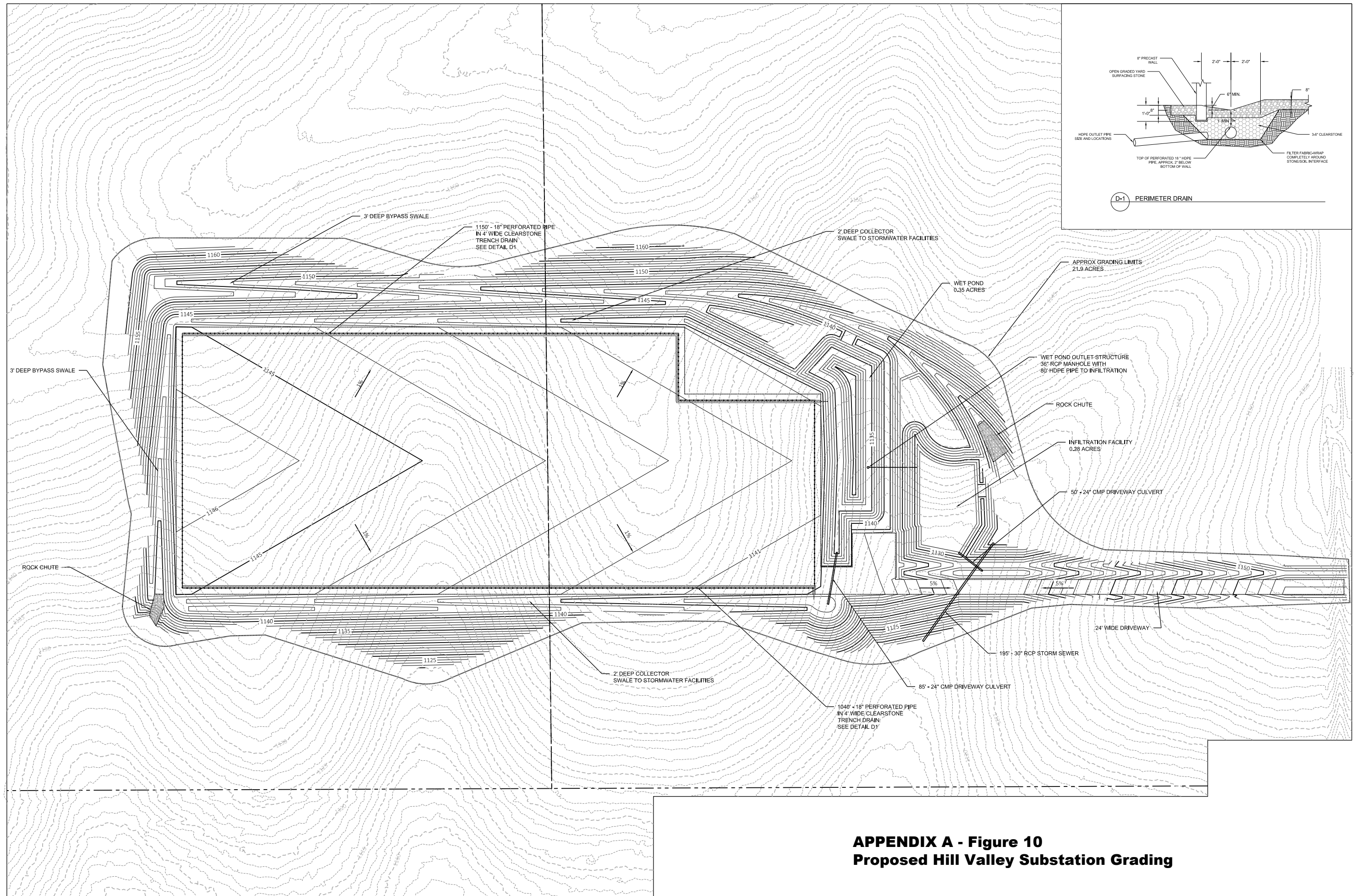




Appendix A - Figure 8
Upper Mississippi Wildlife and Fish Refuge in the project area



Appendix A - Figure 9
Environmentally sensitive areas and ecological landscapes in the project area



STOCKYARD RD - WI 80

APPENDIX A - Figure 10
Proposed Hill Valley Substation Grading