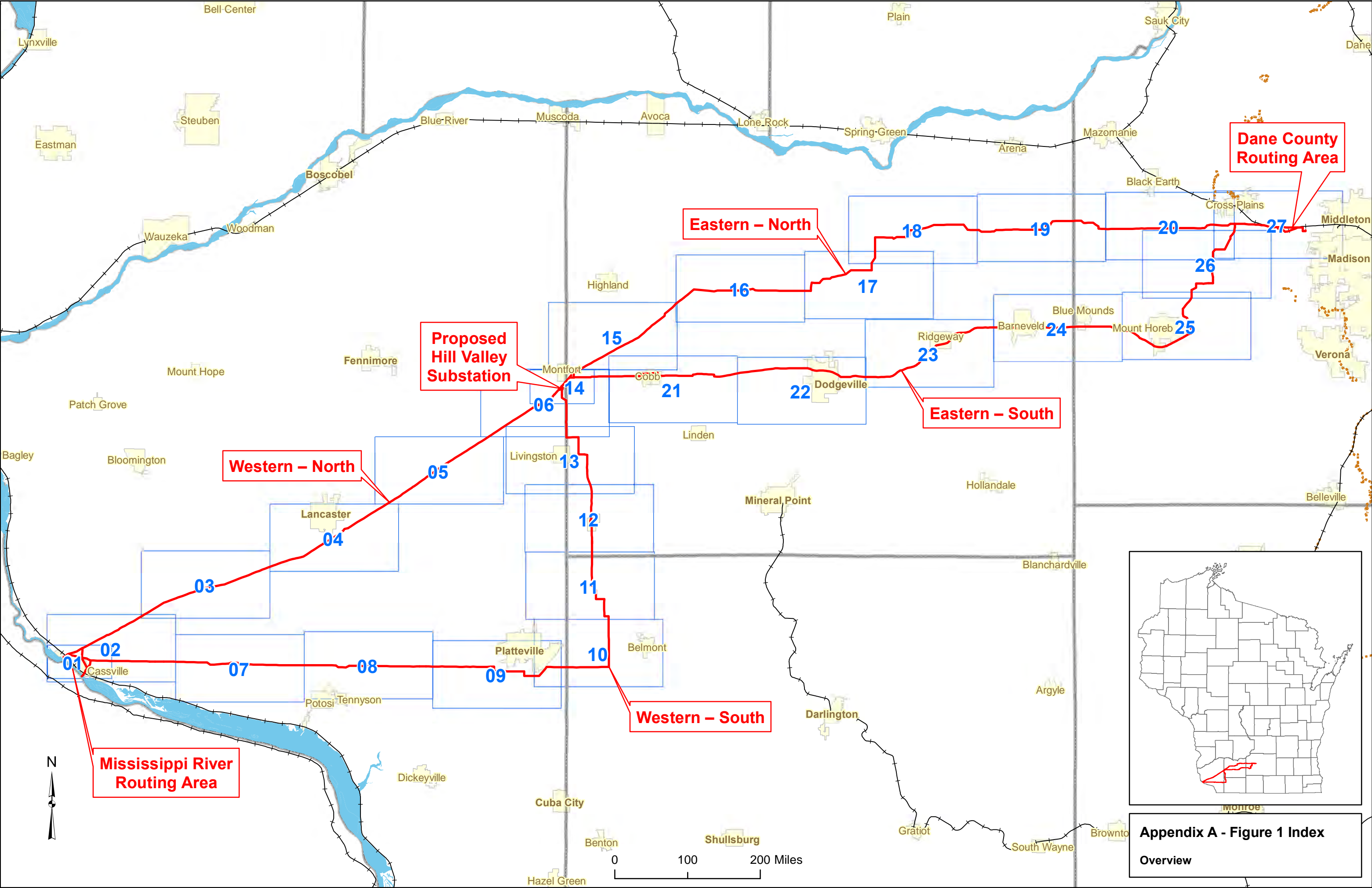


# Appendix A – Project Maps

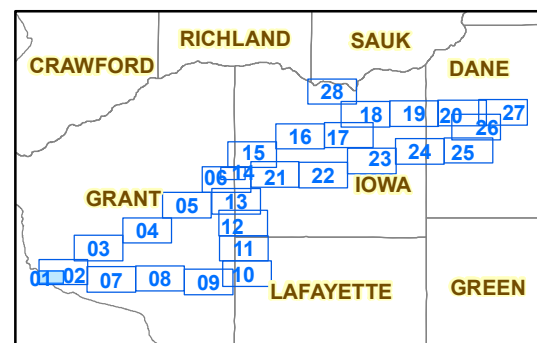
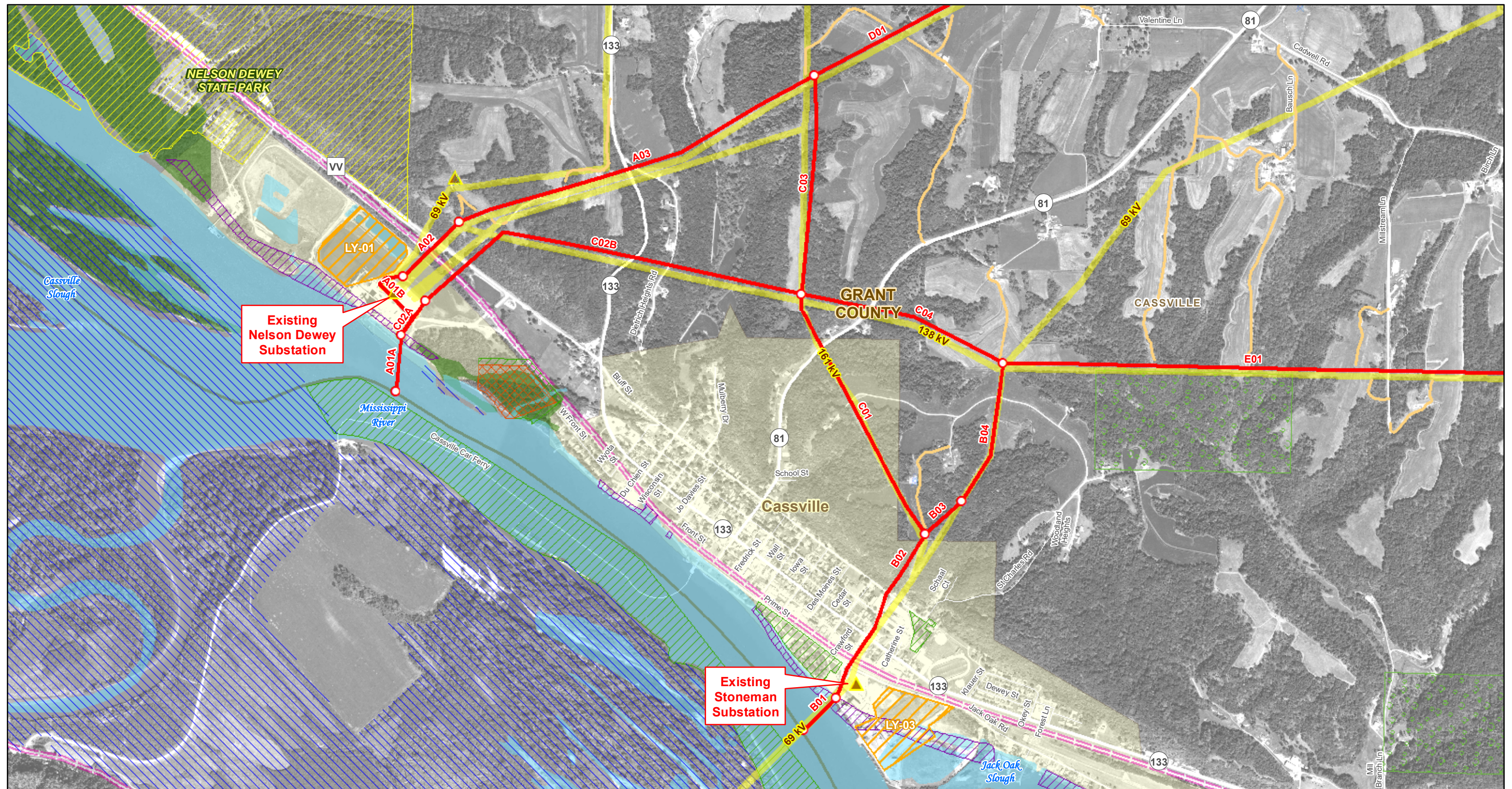
Appendix A includes the following project maps:

- 1.0 Route Maps
- 2.0 Project on Existing Transmission System
- 3.0 Ecological Landscapes
- 4.0 Surface Waters
- 5.0 Depth to Bedrock
- 6.0 Important Bird Areas
- 7.0 Iowa Route Map
- 8.0 Upper Mississippi Wildlife & Fish Refuge
- 9.0 Environmentally Sensitive Areas
- 10.0 Proposed Hill Valley Substation Grading



**Appendix A - Figure 1 Index**  
Overview





### Legend

#### Proposed Facilities

- Subsegment Endpoints
- 345kV Overhead Lines
- Access Routes
- ▭ Laydown Yards
- ▭ Substation Fence
- ▭ Proposed Substation Site

#### Existing Facilities

- ▲ Substations
- Existing Transmission Lines
- Natural Gas Pipelines
- Comm Towers
- ✈ Airports
- ✈ Heliports
- ✈ Seaplane Bases

#### Land Conservation

- ▭ Easement & Land Trust
- ▭ Public Parks & Recreation
- ▭ State Natural Area
- ▭ Wildlife Area / Refuge
- ▭ Waterfowl / Wetland Management District
- ▭ Tribal Land
- ▭ USFWS Managed Land
- ▭ WDNR Managed Land
- ▭ Managed Forest Law

#### Wetlands and Waterways

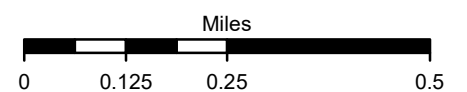
- ▭ Forested Wetland
- ▭ Scrub/Shrub Wetland
- ▭ Emergent/Wet Meadow
- ▭ Flats/Unvegetated Wet Soil
- ▭ Aquatic Bed
- ▭ Open Water

### Notes:

- Aerial photos data source: NAIP, 2013
- Wetlands are shown based on the Wisconsin Wetland Inventory (WWI). Wetlands impacts described in Volume 1 are calculated based on field wetland delineations and other sources.
- Rights-of-way width for existing transmission lines are not to scale.
- Boundaries for USFWS managed lands are approximate.

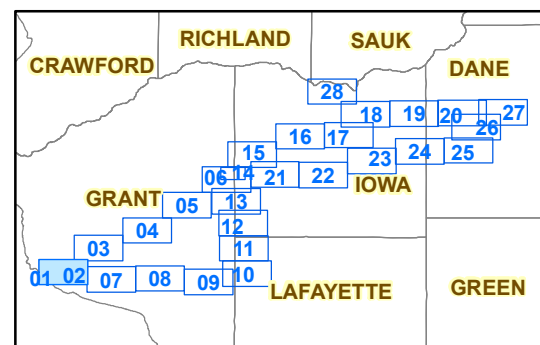
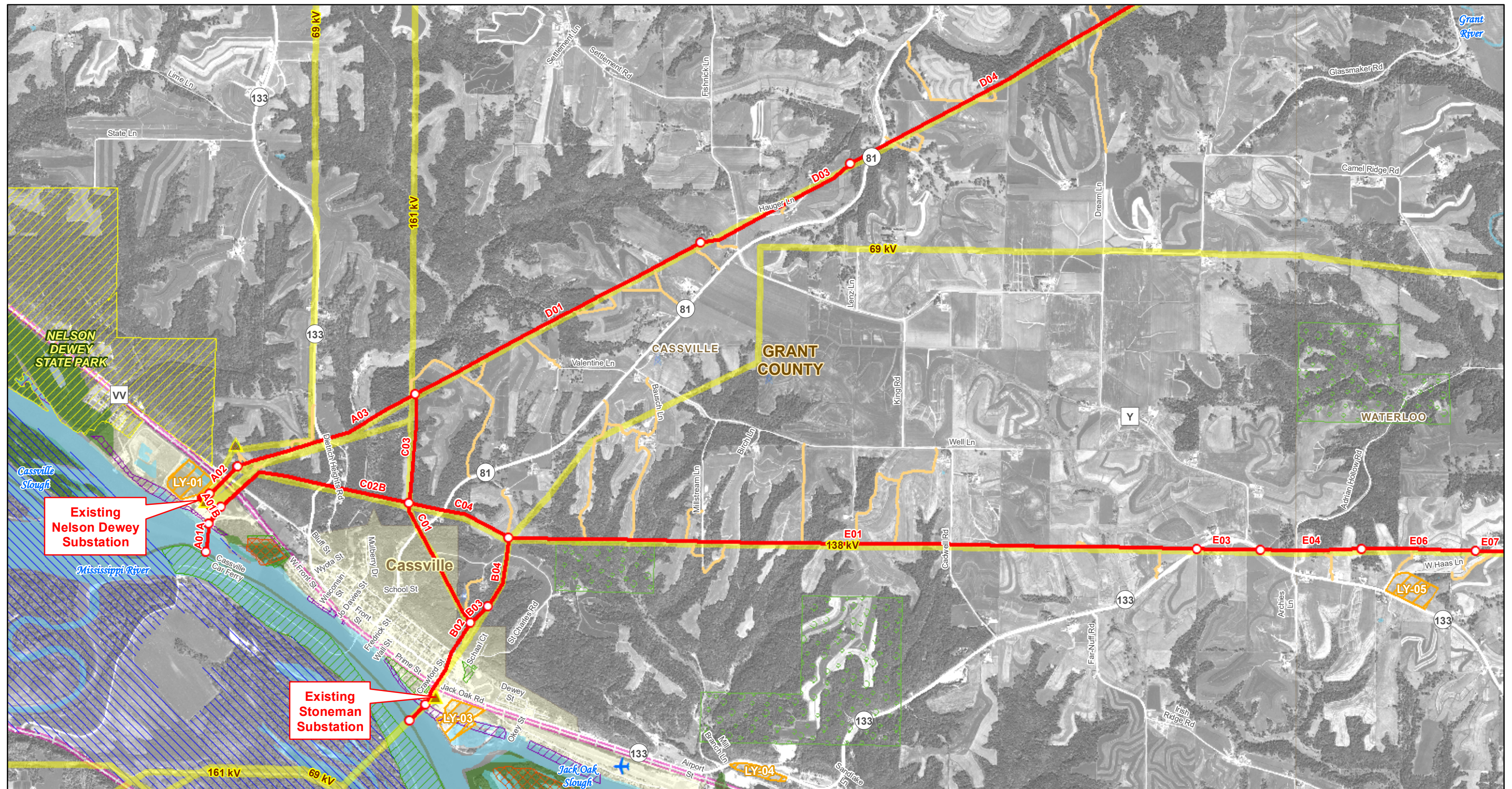


1 Inch = 1,250 Feet



**Appendix A - Figure 1.01**  
**Mississippi River Crossing**





### Legend

#### Proposed Facilities

- Subsegment Endpoints
- 345kV Overhead Lines
- Access Routes
- Laydown Yards
- Substation Fence
- Proposed Substation Site

#### Existing Facilities

- Substations
- Existing Transmission Lines
- Natural Gas Pipelines
- Comm Towers
- Airports
- Heliports
- Seaplane Bases

#### Land Conservation

- Easement & Land Trust
- Public Parks & Recreation
- State Natural Area
- Wildlife Area / Refuge
- Waterfowl / Wetland Management District
- Tribal Land
- USFWS Managed Land
- WDNR Managed Land
- Managed Forest Law

#### Wetlands and Waterways

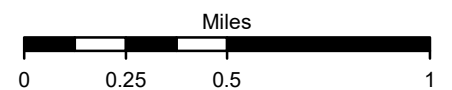
- Forested Wetland
- Scrub/Shrub Wetland
- Emergent/Wet Meadow
- Flats/Unvegetated Wet Soil
- Aquatic Bed
- Open Water

### Notes:

- Aerial photos data source: NAIP, 2013
- Wetlands are shown based on the Wisconsin Wetland Inventory (WWI). Wetlands impacts described in Volume 1 are calculated based on field wetland delineations and other sources.
- Rights-of-way width for existing transmission lines are not to scale.
- Boundaries for USFWS managed lands are approximate.

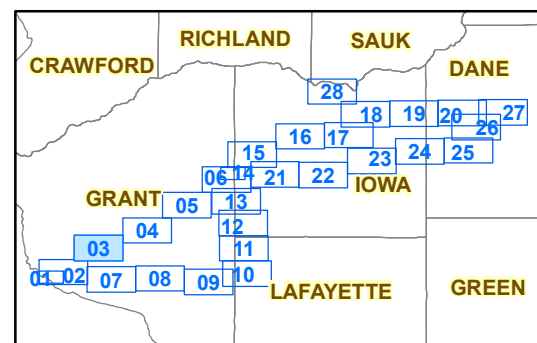


1 Inch = 2,500 Feet



**Appendix A - Figure 1.02**  
**Western Routing Area**





### Legend

#### Proposed Facilities

- Subsegment Endpoints
- 345kV Overhead Lines
- Access Routes
- ▭ Laydown Yards
- ▭ Substation Fence
- ▭ Proposed Substation Site

#### Existing Facilities

- ▲ Substations
- Existing Transmission Lines
- Natural Gas Pipelines
- ⚡ Comm Towers
- ✈ Airports
- ✈ Heliports
- ✈ Seaplane Bases

#### Land Conservation

- ▭ Easement & Land Trust
- ▭ Public Parks & Recreation
- ▭ State Natural Area
- ▭ Wildlife Area / Refuge
- ▭ Waterfowl / Wetland Management District
- ▭ Tribal Land
- ▭ USFWS Managed Land
- ▭ WDNR Managed Land
- ▭ Managed Forest Law

#### Wetlands and Waterways

- ▭ Forested Wetland
- ▭ Scrub/Shrub Wetland
- ▭ Emergent/Wet Meadow
- ▭ Flats/Unvegetated Wet Soil
- ▭ Aquatic Bed
- ▭ Open Water

### Notes:

- Aerial photos data source: NAIP, 2013
- Wetlands are shown based on the Wisconsin Wetland Inventory (WWI). Wetlands impacts described in Volume 1 are calculated based on field wetland delineations and other sources.
- Rights-of-way width for existing transmission lines are not to scale.
- Boundaries for USFWS managed lands are approximate.



1 Inch = 2,500 Feet



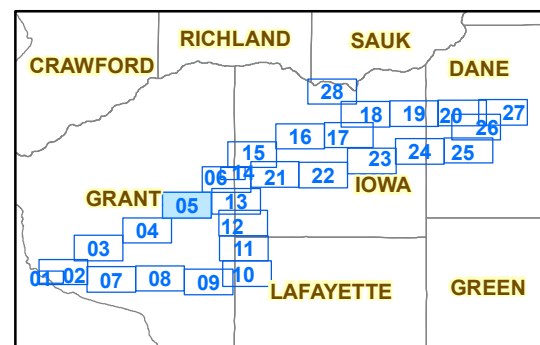
### Appendix A - Figure 1.03

Western - North Route









### Legend

#### Proposed Facilities

- Subsegment Endpoints
- 345kV Overhead Lines
- Access Routes
- Laydown Yards
- Substation Fence
- Proposed Substation Site

#### Existing Facilities

- Substations
- Existing Transmission Lines
- Natural Gas Pipelines
- Comm Towers
- Airports
- Heliports
- Seaplane Bases

#### Land Conservation

- Easement & Land Trust
- Public Parks & Recreation
- State Natural Area
- Wildlife Area / Refuge
- Waterfowl / Wetland Management District
- Tribal Land
- USFWS Managed Land
- WDNR Managed Land
- Managed Forest Law

#### Wetlands and Waterways

- Forested Wetland
- Scrub/Shrub Wetland
- Emergent/Wet Meadow
- Flats/Unvegetated Wet Soil
- Aquatic Bed
- Open Water

### Notes:

- Aerial photos data source: NAIP, 2013
- Wetlands are shown based on the Wisconsin Wetland Inventory (WWI). Wetlands impacts described in Volume 1 are calculated based on field wetland delineations and other sources.
- Rights-of-way width for existing transmission lines are not to scale.
- Boundaries for USFWS managed lands are approximate.

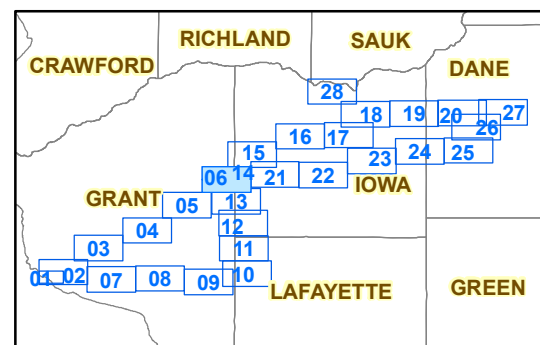
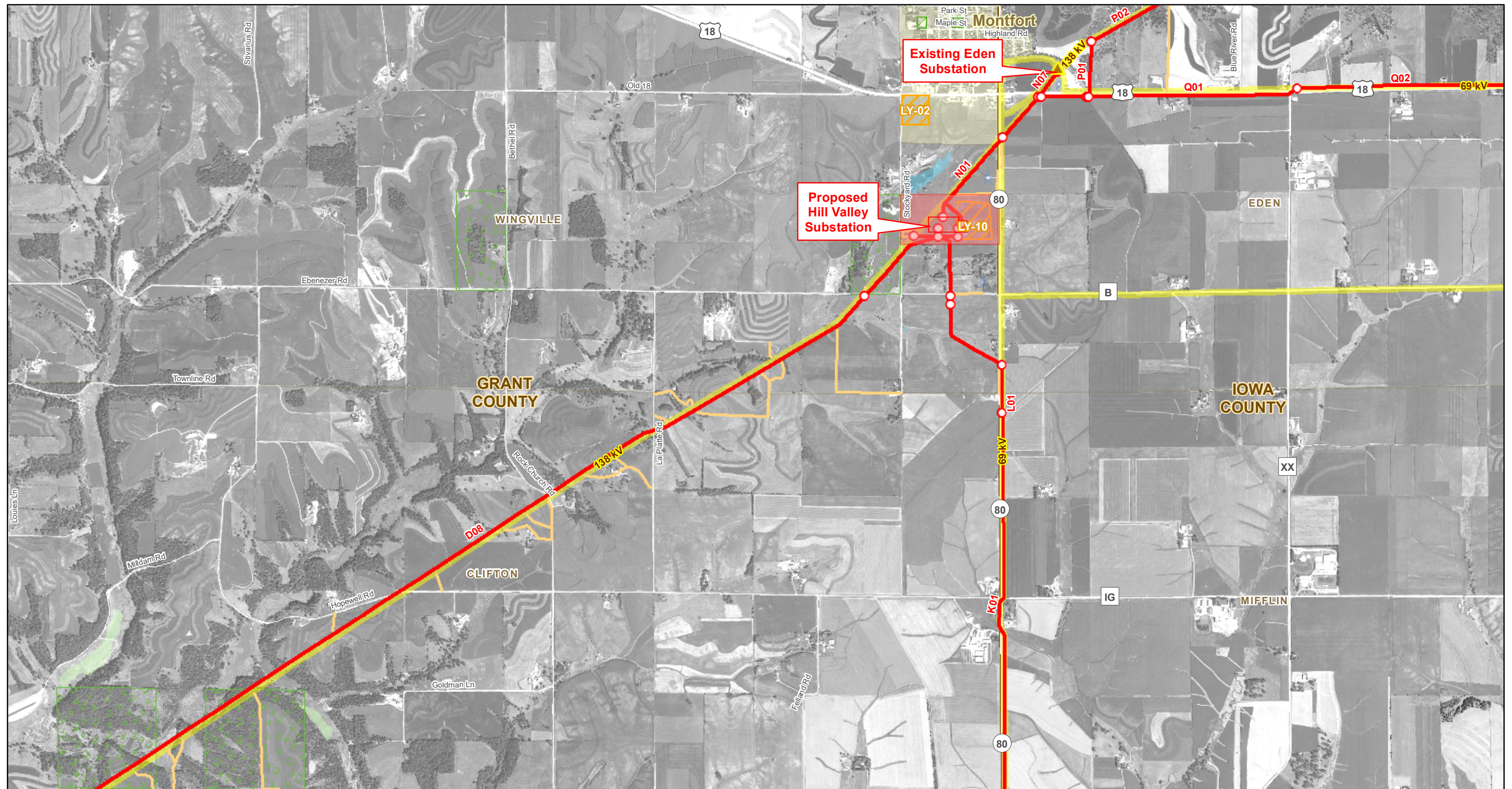


1 Inch = 2,500 Feet



**Appendix A - Figure 1.05**  
**Western – North Route**





### Legend

#### Proposed Facilities

- Subsegment Endpoints
- 345kV Overhead Lines
- Access Routes
- Laydown Yards
- Substation Fence
- Proposed Substation Site

#### Existing Facilities

- ▲ Substations
- Existing Transmission Lines
- Natural Gas Pipelines
- ⚡ Comm Towers
- ✈ Airports
- ✈ Heliports
- ✈ Seaplane Bases

#### Land Conservation

- Easement & Land Trust
- Public Parks & Recreation
- State Natural Area
- Wildlife Area / Refuge
- Waterfowl / Wetland Management District
- Tribal Land
- USFWS Managed Land
- WDNR Managed Land
- Managed Forest Law

#### Wetlands and Waterways

- Forested Wetland
- Scrub/Shrub Wetland
- Emergent/Wet Meadow
- Flats/Unvegetated Wet Soil
- Aquatic Bed
- Open Water

### Notes:

- Aerial photos data source: NAIP, 2013
- Wetlands are shown based on the Wisconsin Wetland Inventory (WWI). Wetlands impacts described in Volume 1 are calculated based on field wetland delineations and other sources.
- Rights-of-way width for existing transmission lines are not to scale.
- Boundaries for USFWS managed lands are approximate.

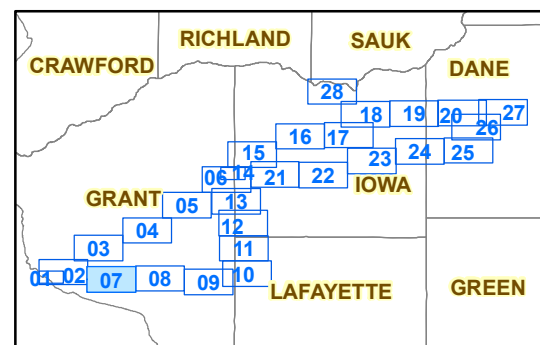


1 Inch = 2,500 Feet



**Appendix A - Figure 1.06**  
Western Routing Area





### Legend

#### Proposed Facilities

- Subsegment Endpoints
- 345kV Overhead Lines
- Access Routes
- Laydown Yards
- Substation Fence
- Proposed Substation Site

#### Existing Facilities

- ▲ Substations
- Existing Transmission Lines
- Natural Gas Pipelines
- ⚡ Comm Towers
- ✈ Airports
- ✈ Heliports
- ✈ Seaplane Bases

#### Land Conservation

- Easement & Land Trust
- Public Parks & Recreation
- State Natural Area
- Wildlife Area / Refuge
- Waterfowl / Wetland Management District
- Tribal Land
- USFWS Managed Land
- WDNR Managed Land
- Managed Forest Law

#### Wetlands and Waterways

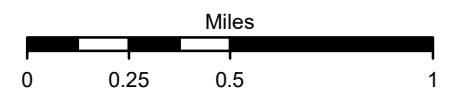
- Forested Wetland
- Scrub/Shrub Wetland
- Emergent/Wet Meadow
- Flats/Unvegetated Wet Soil
- Aquatic Bed
- Open Water

### Notes:

- Aerial photos data source: NAIP, 2013
- Wetlands are shown based on the Wisconsin Wetland Inventory (WWI). Wetlands impacts described in Volume 1 are calculated based on field wetland delineations and other sources.
- Rights-of-way width for existing transmission lines are not to scale.
- Boundaries for USFWS managed lands are approximate.



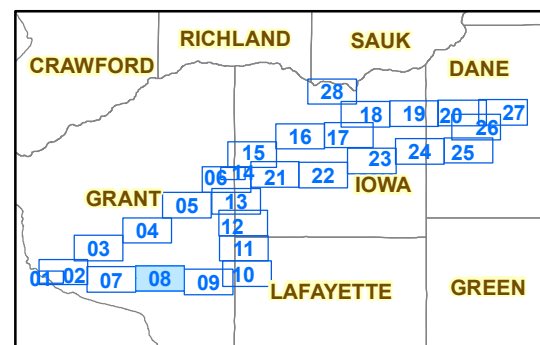
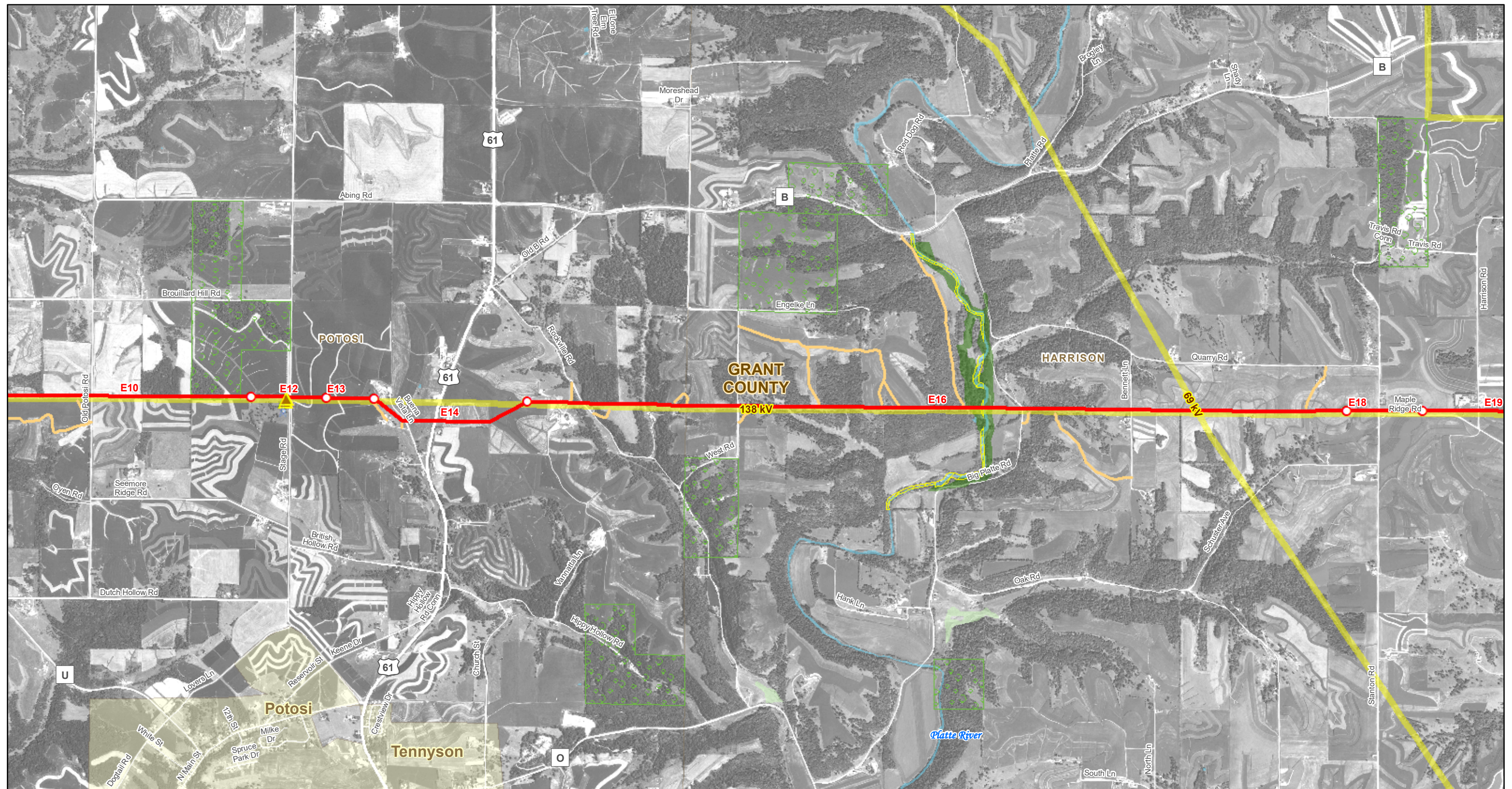
1 Inch = 2,500 Feet



### Appendix A - Figure 1.07

Western – South Route





### Legend

#### Proposed Facilities

- Subsegment Endpoints
- 345kV Overhead Lines
- Access Routes
- Laydown Yards
- Substation Fence
- Proposed Substation Site

#### Existing Facilities

- Substations
- Existing Transmission Lines
- Natural Gas Pipelines
- Comm Towers
- Airports
- Heliports
- Seaplane Bases

#### Land Conservation

- Easement & Land Trust
- Public Parks & Recreation
- State Natural Area
- Wildlife Area / Refuge
- Waterfowl / Wetland Management District
- Tribal Land
- USFWS Managed Land
- WDNR Managed Land
- Managed Forest Law

#### Wetlands and Waterways

- Forested Wetland
- Scrub/Shrub Wetland
- Emergent/Wet Meadow
- Flats/Unvegetated Wet Soil
- Aquatic Bed
- Open Water

### Notes:

- Aerial photos data source: NAIP, 2013
- Wetlands are shown based on the Wisconsin Wetland Inventory (WWI). Wetlands impacts described in Volume 1 are calculated based on field wetland delineations and other sources.
- Rights-of-way width for existing transmission lines are not to scale.
- Boundaries for USFWS managed lands are approximate.

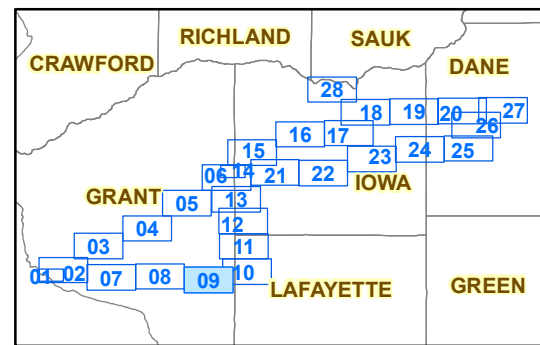
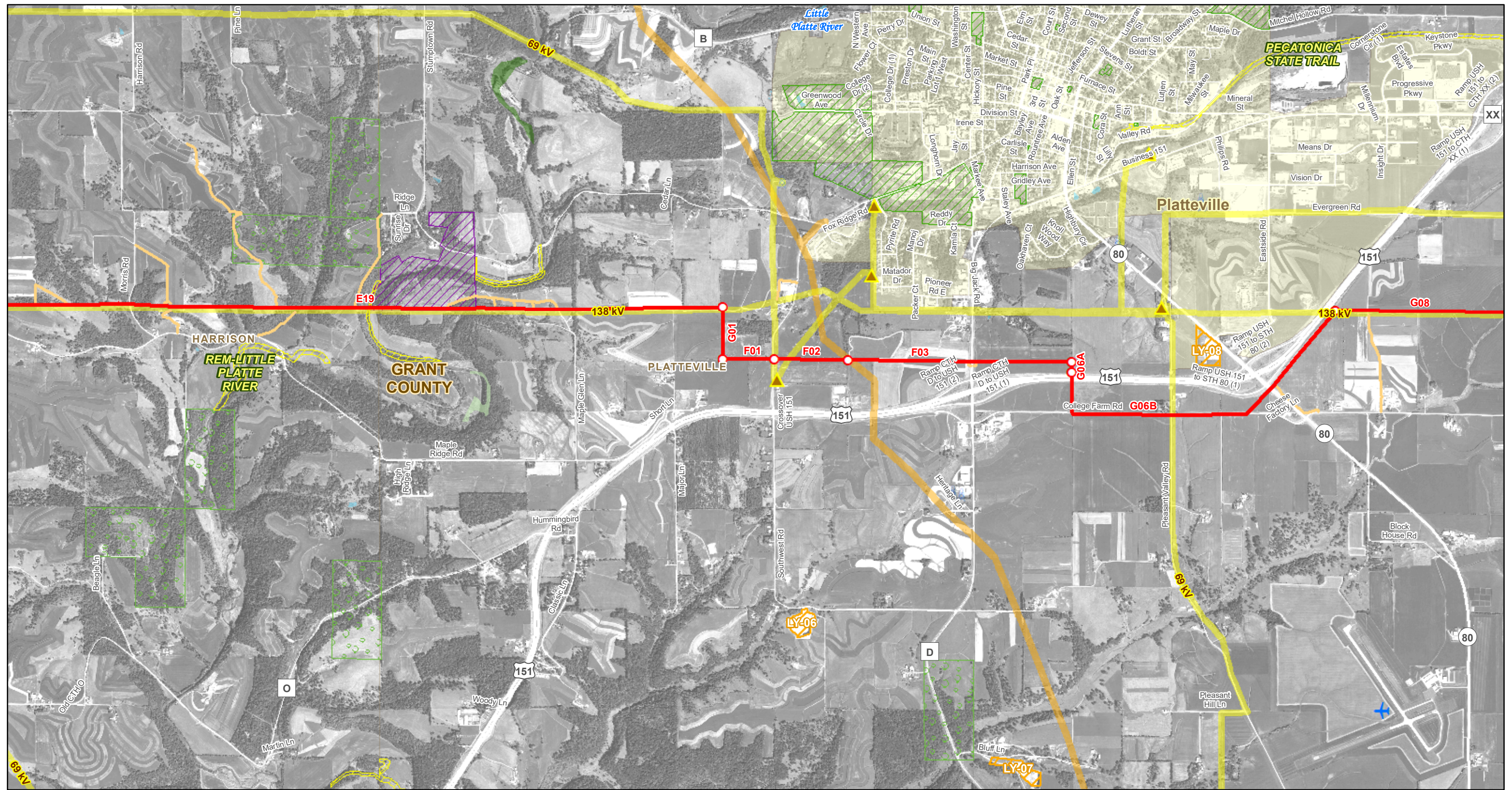


1 Inch = 2,500 Feet



**Appendix A - Figure 1.08**  
**Western – South Route**





### Legend

#### Proposed Facilities

- Subsegment Endpoints
- 345kV Overhead Lines
- Access Routes
- Laydown Yards
- Substation Fence
- Proposed Substation Site

#### Existing Facilities

- Substations
- Existing Transmission Lines
- Natural Gas Pipelines
- Comm Towers
- Airports
- Heliports
- Seaplane Bases

#### Land Conservation

- Easement & Land Trust
- Public Parks & Recreation
- State Natural Area
- Wildlife Area / Refuge
- Waterfowl / Wetland Management District
- Tribal Land
- USFWS Managed Land
- WDNR Managed Land
- Managed Forest Law

#### Wetlands and Waterways

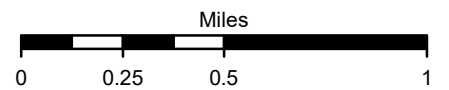
- Forested Wetland
- Scrub/Shrub Wetland
- Emergent/Wet Meadow
- Flats/Unvegetated Wet Soil
- Aquatic Bed
- Open Water

### Notes:

- Aerial photos data source: NAIP, 2013
- Wetlands are shown based on the Wisconsin Wetland Inventory (WWI). Wetlands impacts described in Volume 1 are calculated based on field wetland delineations and other sources.
- Rights-of-way width for existing transmission lines are not to scale.
- Boundaries for USFWS managed lands are approximate.

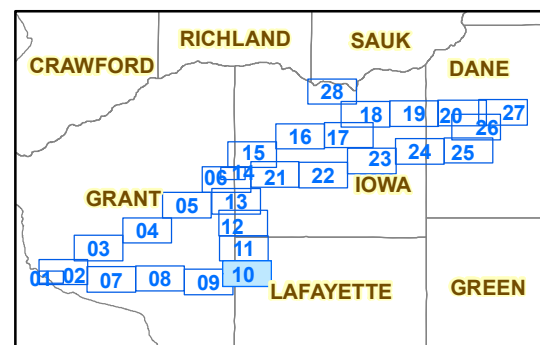
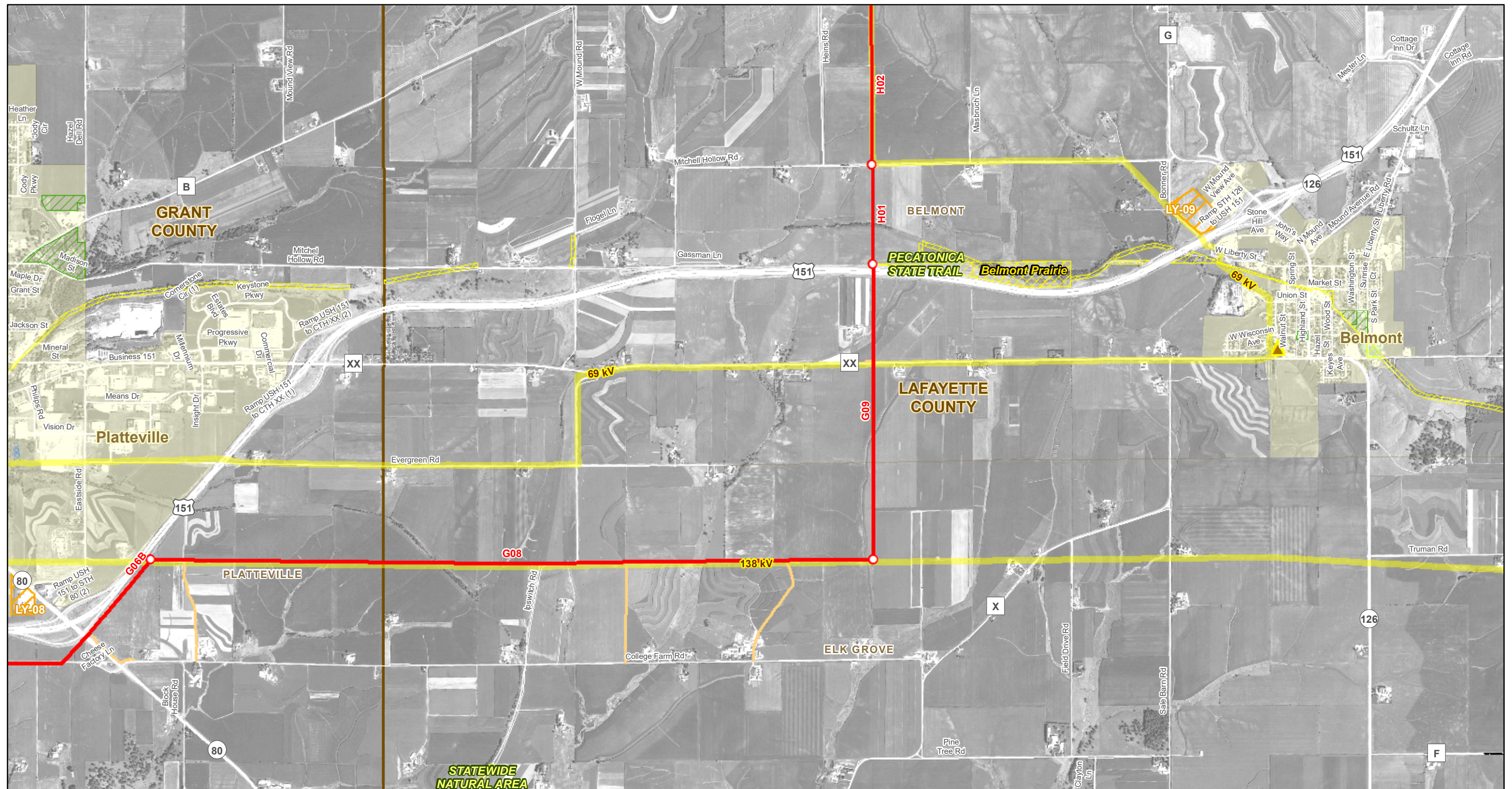


1 Inch = 2,500 Feet



**Appendix A - Figure 1.09**  
**Western – South Route**





### Legend

#### Proposed Facilities

- Subsegment Endpoints
- 345kV Overhead Lines
- Access Routes
- Laydown Yards
- Substation Fence
- Proposed Substation Site

#### Existing Facilities

- Substations
- Existing Transmission Lines
- Natural Gas Pipelines
- Comm Towers
- Airports
- Heliports
- Seaplane Bases

#### Land Conservation

- Easement & Land Trust
- Public Parks & Recreation
- State Natural Area
- Wildlife Area / Refuge
- Waterfowl / Wetland Management District
- Tribal Land
- USFWS Managed Land
- WDNR Managed Land
- Managed Forest Law

#### Wetlands and Waterways

- Forested Wetland
- Scrub/Shrub Wetland
- Emergent/Wet Meadow
- Flats/Unvegetated Wet Soil
- Aquatic Bed
- Open Water

### Notes:

- Aerial photos data source: NAIP, 2013
- Wetlands are shown based on the Wisconsin Wetland Inventory (WWI). Wetlands impacts described in Volume 1 are calculated based on field wetland delineations and other sources.
- Rights-of-way width for existing transmission lines are not to scale.
- Boundaries for USFWS managed lands are approximate.

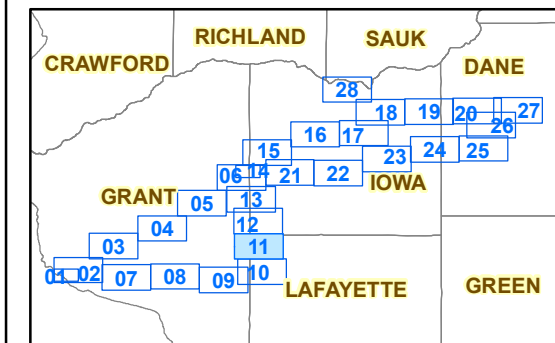
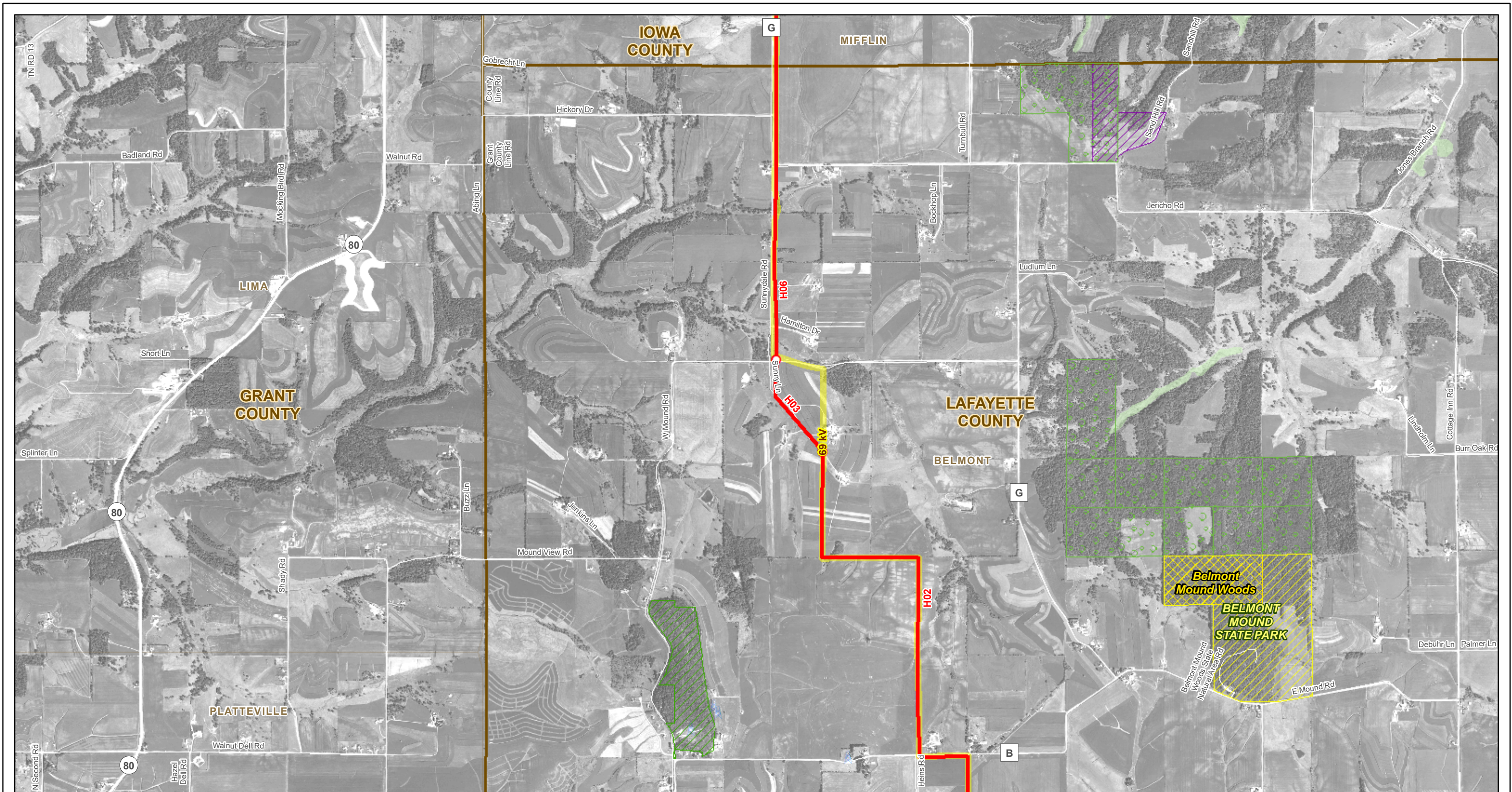


1 Inch = 2,500 Feet



**Appendix A - Figure 1.10**  
**Western – South Route**





### Legend

#### Proposed Facilities

- Subsegment Endpoints
- 345kV Overhead Lines
- Access Routes
- Laydown Yards
- Substation Fence
- Proposed Substation Site

#### Existing Facilities

- Substations
- Existing Transmission Lines
- Natural Gas Pipelines
- Comm Towers
- Airports
- Heliports
- Seaplane Bases

#### Land Conservation

- Easement & Land Trust
- Public Parks & Recreation
- State Natural Area
- Wildlife Area / Refuge
- Waterfowl / Wetland Management District
- Tribal Land
- USFWS Managed Land
- WDNR Managed Land
- Managed Forest Law

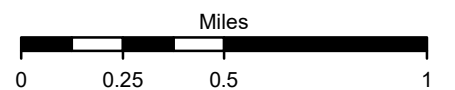
#### Wetlands and Waterways

- Forested Wetland
- Scrub/Shrub Wetland
- Emergent/Wet Meadow
- Flats/Unvegetated Wet Soil
- Aquatic Bed
- Open Water

### Notes:

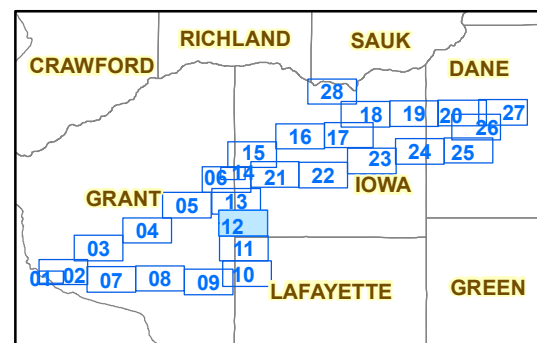
- Aerial photos data source: NAIP, 2013
- Wetlands are shown based on the Wisconsin Wetland Inventory (WWI). Wetlands impacts described in Volume 1 are calculated based on field wetland delineations and other sources.
- Rights-of-way width for existing transmission lines are not to scale.
- Boundaries for USFWS managed lands are approximate.

1 Inch = 2,500 Feet



**Appendix A - Figure 1.11**  
**Western - South Route**





### Legend

#### Proposed Facilities

- Subsegment Endpoints
- 345kV Overhead Lines
- Access Routes
- Laydown Yards
- Substation Fence
- Proposed Substation Site

#### Existing Facilities

- Substations
- Existing Transmission Lines
- Natural Gas Pipelines
- Comm Towers
- Airports
- Heliports
- Seaplane Bases

#### Land Conservation

- Easement & Land Trust
- Public Parks & Recreation
- State Natural Area
- Wildlife Area / Refuge
- Waterfowl / Wetland Management District
- Tribal Land
- USFWS Managed Land
- WDNR Managed Land
- Managed Forest Law

#### Wetlands and Waterways

- Forested Wetland
- Scrub/Shrub Wetland
- Emergent/Wet Meadow
- Flats/Unvegetated Wet Soil
- Aquatic Bed
- Open Water

### Notes:

- Aerial photos data source: NAIP, 2013
- Wetlands are shown based on the Wisconsin Wetland Inventory (WWI). Wetlands impacts described in Volume 1 are calculated based on field wetland delineations and other sources.
- Rights-of-way width for existing transmission lines are not to scale.
- Boundaries for USFWS managed lands are approximate.



1 Inch = 2,500 Feet

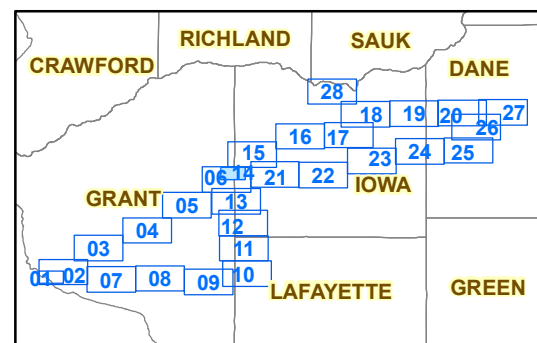
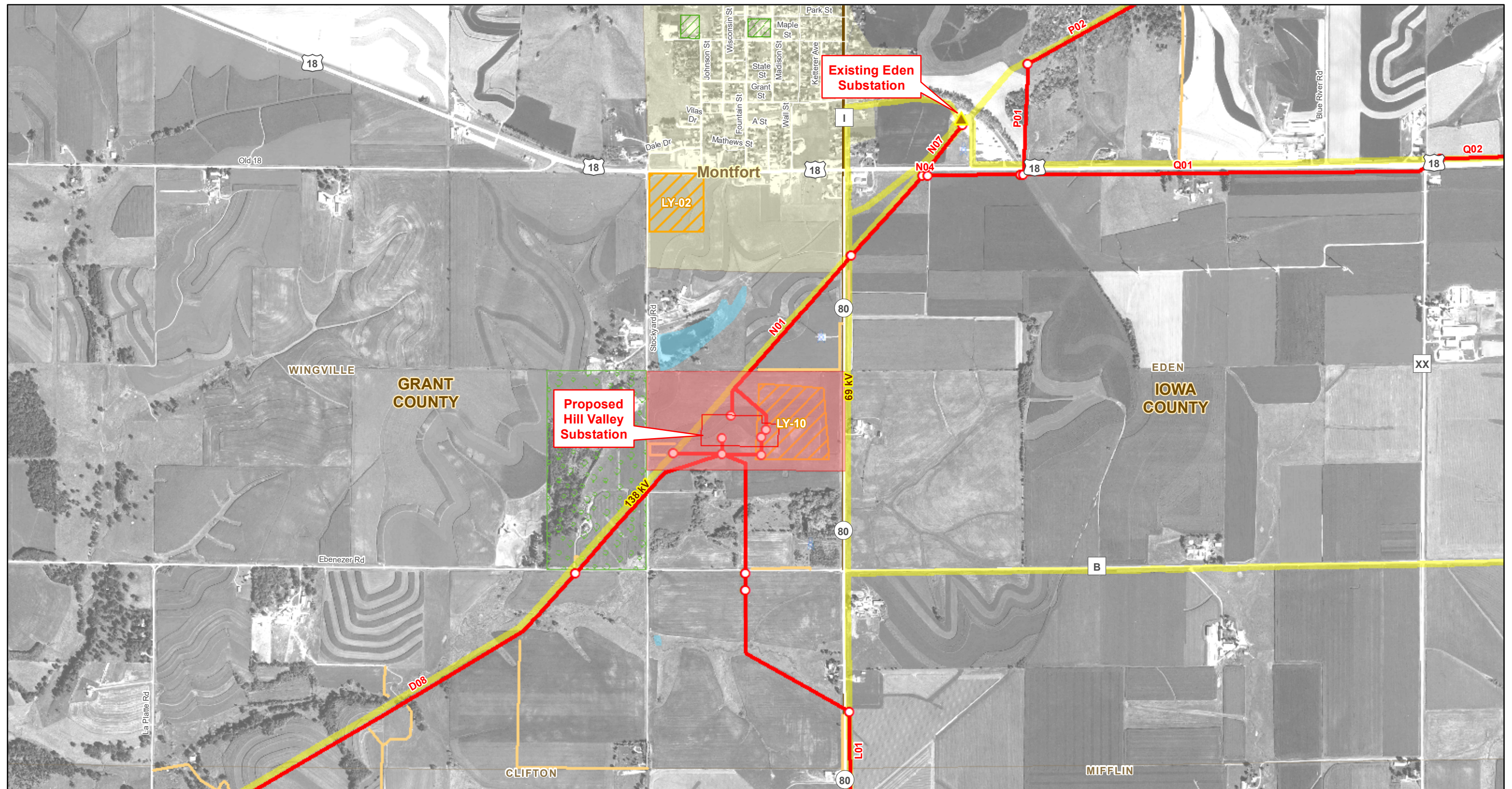


**Appendix A - Figure 1.12**  
**Western – South Route**









### Legend

#### Proposed Facilities

- Subsegment Endpoints
- 345kV Overhead Lines
- Access Routes
- ▭ Laydown Yards
- ▭ Substation Fence
- ▭ Proposed Substation Site

#### Existing Facilities

- ▲ Substations
- Existing Transmission Lines
- Natural Gas Pipelines
- Comm Towers
- Airports
- Heliports
- Seaplane Bases

#### Land Conservation

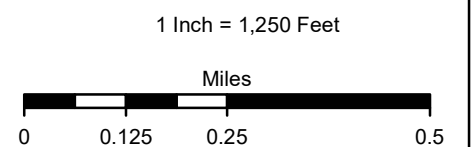
- ▭ Easement & Land Trust
- ▭ Public Parks & Recreation
- ▭ State Natural Area
- ▭ Wildlife Area / Refuge
- ▭ Waterfowl / Wetland Management District
- ▭ Tribal Land
- ▭ USFWS Managed Land
- ▭ WDNR Managed Land
- ▭ Managed Forest Law

#### Wetlands and Waterways

- ▭ Forested Wetland
- ▭ Scrub/Shrub Wetland
- ▭ Emergent/Wet Meadow
- ▭ Flats/Unvegetated Wet Soil
- ▭ Aquatic Bed
- ▭ Open Water

### Notes:

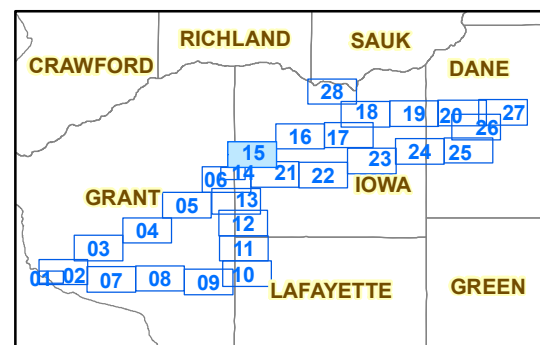
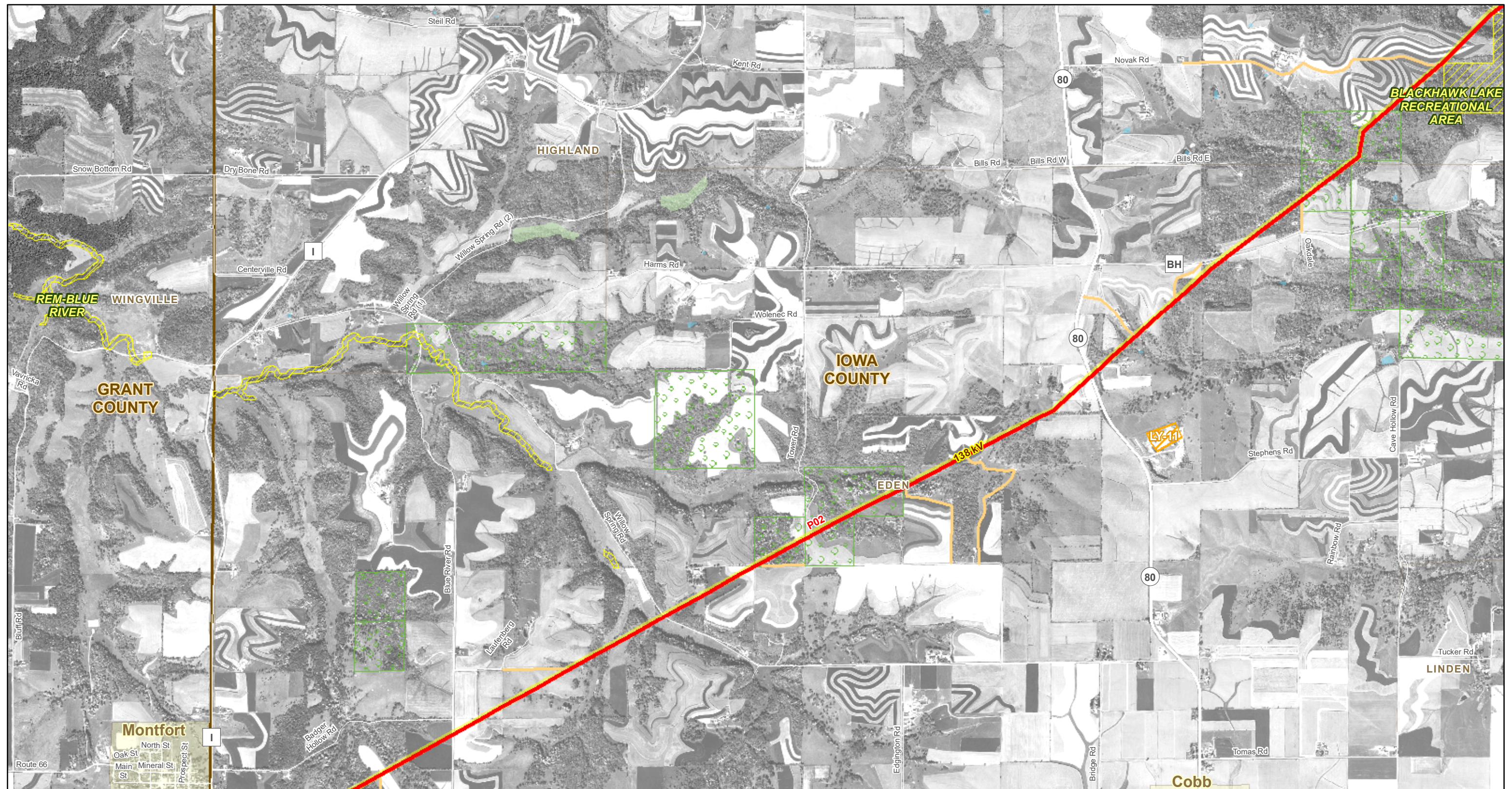
- Aerial photos data source: NAIP, 2013
- Wetlands are shown based on the Wisconsin Wetland Inventory (WWI). Wetlands impacts described in Volume 1 are calculated based on field wetland delineations and other sources.
- Rights-of-way width for existing transmission lines are not to scale.
- Boundaries for USFWS managed lands are approximate.



### Appendix A - Figure 1.14

Hill Valley Substation





### Legend

#### Proposed Facilities

- Subsegment Endpoints
- 345kV Overhead Lines
- Access Routes
- Laydown Yards
- Substation Fence
- Proposed Substation Site

#### Existing Facilities

- ▲ Substations
- Existing Transmission Lines
- Natural Gas Pipelines
- ⚡ Comm Towers
- ✈ Airports
- ✈ Heliports
- ✈ Seaplane Bases

#### Land Conservation

- Easement & Land Trust
- Public Parks & Recreation
- State Natural Area
- Wildlife Area / Refuge
- Waterfowl / Wetland Management District
- Tribal Land
- USFWS Managed Land
- WDNR Managed Land
- Managed Forest Law

#### Wetlands and Waterways

- Forested Wetland
- Scrub/Shrub Wetland
- Emergent/Wet Meadow
- Flats/Unvegetated Wet Soil
- Aquatic Bed
- Open Water

### Notes:

- Aerial photos data source: NAIP, 2013
- Wetlands are shown based on the Wisconsin Wetland Inventory (WWI). Wetlands impacts described in Volume 1 are calculated based on field wetland delineations and other sources.
- Rights-of-way width for existing transmission lines are not to scale.
- Boundaries for USFWS managed lands are approximate.

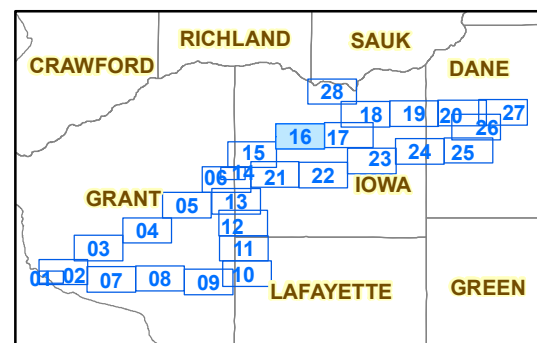
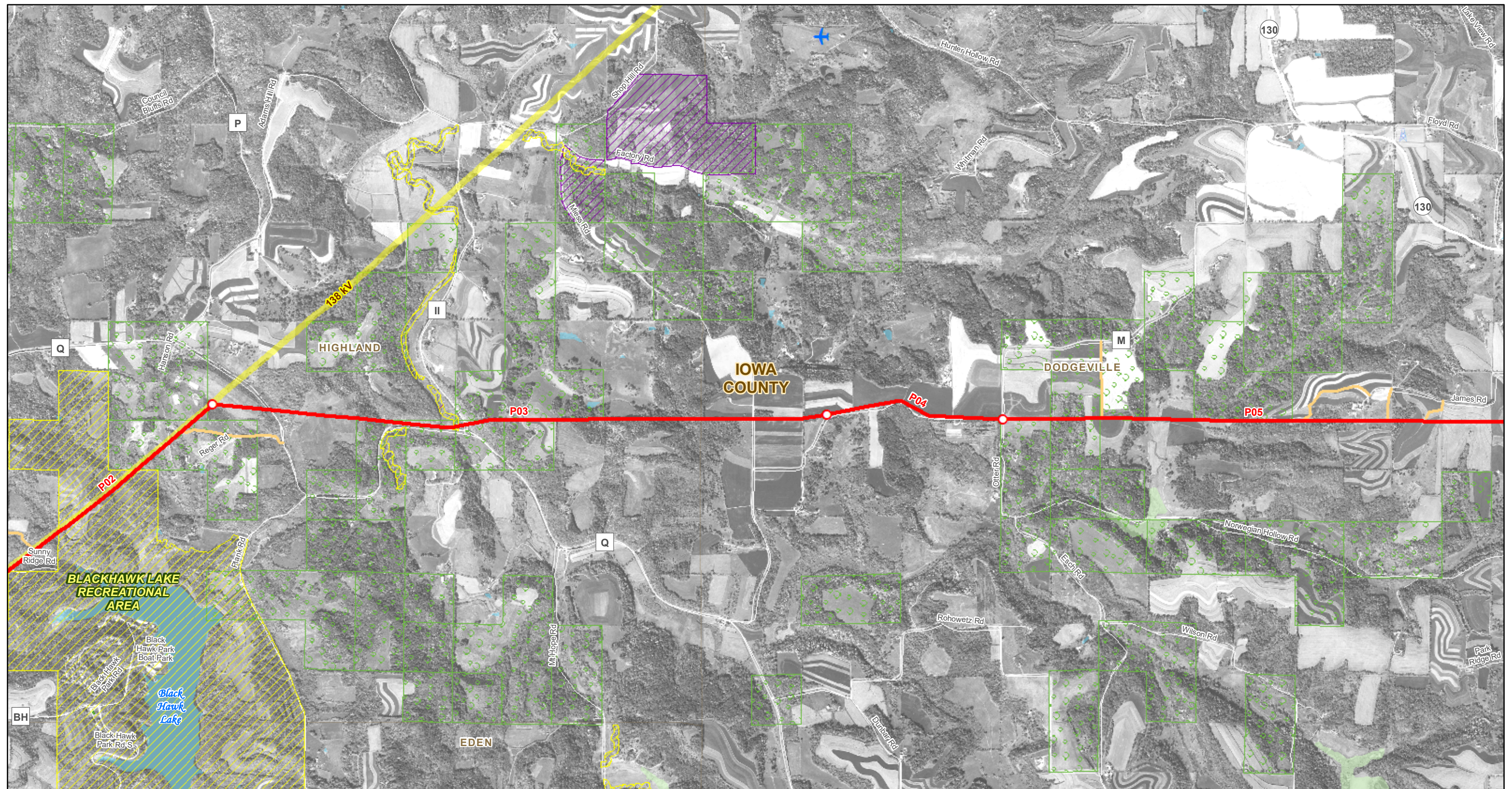


1 Inch = 2,500 Feet



**Appendix A - Figure 1.15**  
Eastern – North Route





### Legend

#### Proposed Facilities

- Subsegment Endpoints
- 345kV Overhead Lines
- Access Routes
- Laydown Yards
- Substation Fence
- Proposed Substation Site

#### Existing Facilities

- ▲ Substations
- Existing Transmission Lines
- Natural Gas Pipelines
- ⚡ Comm Towers
- ✈ Airports
- ✈ Heliports
- ✈ Seaplane Bases

#### Land Conservation

- Easement & Land Trust
- Public Parks & Recreation
- State Natural Area
- Wildlife Area / Refuge
- Waterfowl / Wetland Management District
- Tribal Land
- USFWS Managed Land
- WDNR Managed Land
- Managed Forest Law

#### Wetlands and Waterways

- Forested Wetland
- Scrub/Shrub Wetland
- Emergent/Wet Meadow
- Flats/Unvegetated Wet Soil
- Aquatic Bed
- Open Water

### Notes:

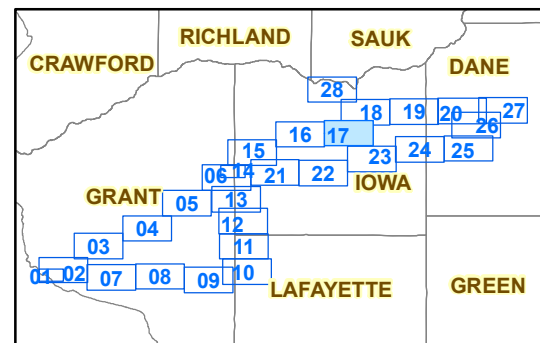
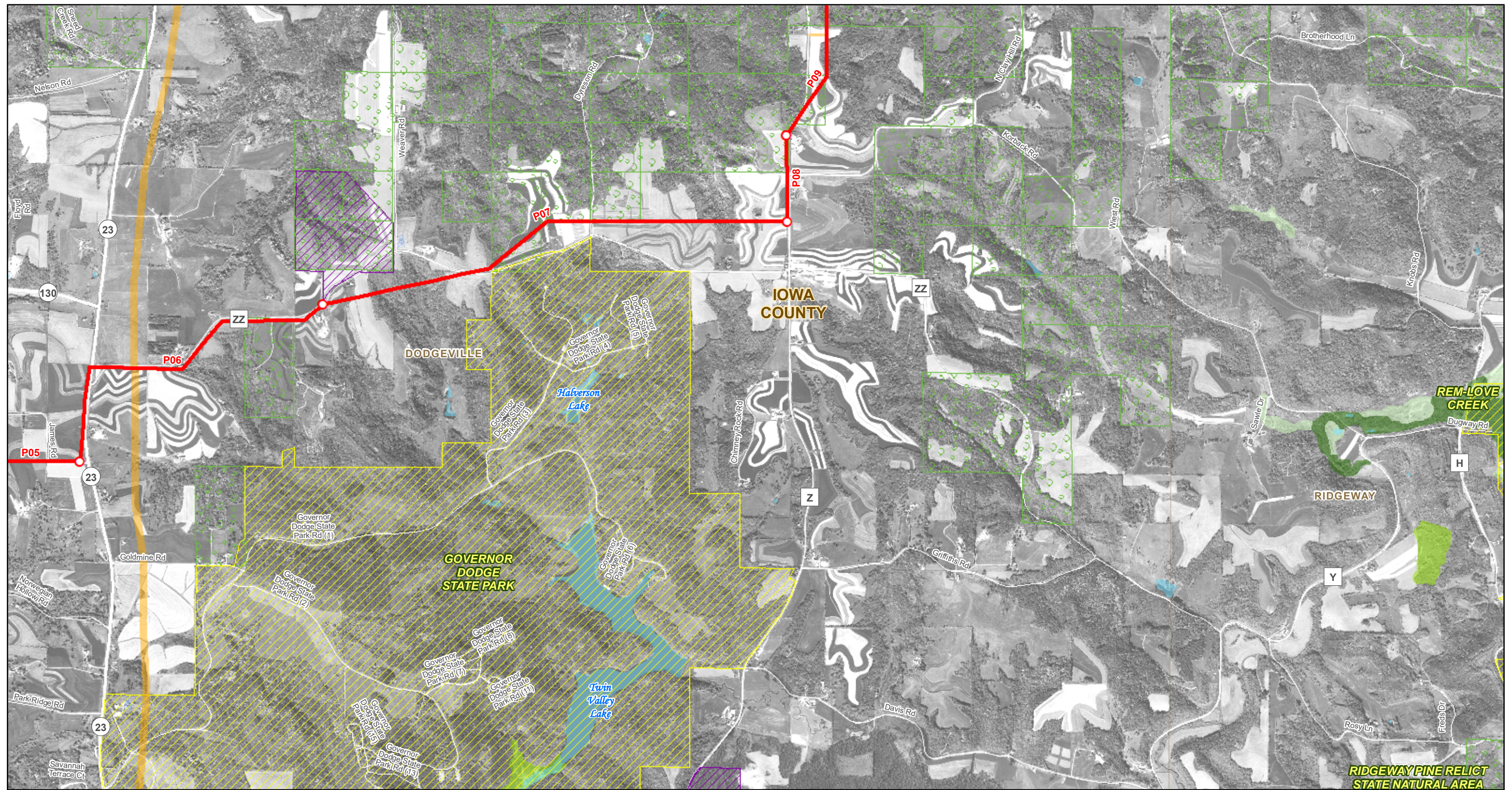
- Aerial photos data source: NAIP, 2013
- Wetlands are shown based on the Wisconsin Wetland Inventory (WWI). Wetlands impacts described in Volume 1 are calculated based on field wetland delineations and other sources.
- Rights-of-way width for existing transmission lines are not to scale.
- Boundaries for USFWS managed lands are approximate.

1 Inch = 2,500 Feet



**Appendix A - Figure 1.16**  
Eastern – North Route





### Legend

#### Proposed Facilities

- Subsegment Endpoints
- 345kV Overhead Lines
- Access Routes
- Laydown Yards
- Substation Fence
- Proposed Substation Site

#### Existing Facilities

- Substations
- Existing Transmission Lines
- Natural Gas Pipelines
- Comm Towers
- Airports
- Heliports
- Seaplane Bases

#### Land Conservation

- Easement & Land Trust
- Public Parks & Recreation
- State Natural Area
- Wildlife Area / Refuge
- Waterfowl / Wetland Management District
- Tribal Land
- USFWS Managed Land
- WDNR Managed Land
- Managed Forest Law

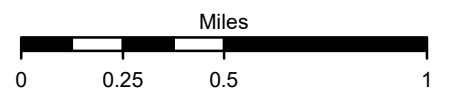
#### Wetlands and Waterways

- Forested Wetland
- Scrub/Shrub Wetland
- Emergent/Wet Meadow
- Flats/Unvegetated Wet Soil
- Aquatic Bed
- Open Water

### Notes:

- Aerial photos data source: NAIP, 2013
- Wetlands are shown based on the Wisconsin Wetland Inventory (WWI). Wetlands impacts described in Volume 1 are calculated based on field wetland delineations and other sources.
- Rights-of-way width for existing transmission lines are not to scale.
- Boundaries for USFWS managed lands are approximate.

1 Inch = 2,500 Feet



**Appendix A - Figure 1.17**  
Eastern – North Route