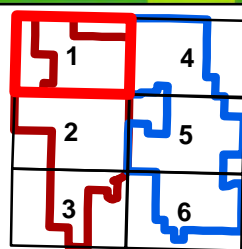


Data Source(s): Esri (2016); Westwood (2016).

Westwood
Toll Free (888) 937-5150 westwoodps.com
Westwood Professional Services, Inc.



Legend

- | | | | | |
|--------------------|----------------------------|---|----------------------------|----------------------------|
| Turbine | Access Roads | Potential Native Prairie | Getty Project Boundary | Public Road |
| Met Tower | Electric Collection System | Wetlands (Delineated) | Black Oak Project Boundary | Right-of-Way |
| Project Substation | Crane Path (Primary) | Shoreland Overlay | Signed Parcel | Right-of-Way Buffer (250') |
| | Crane Path (Secondary) | Residence (1000') | Township Boundary | |
| | | Wind Resource Setback (3RDX5RD) (1082.6'x1804.5') | Section Boundary | |

Black Oak Getty Wind Project

Stearns County, Minnesota

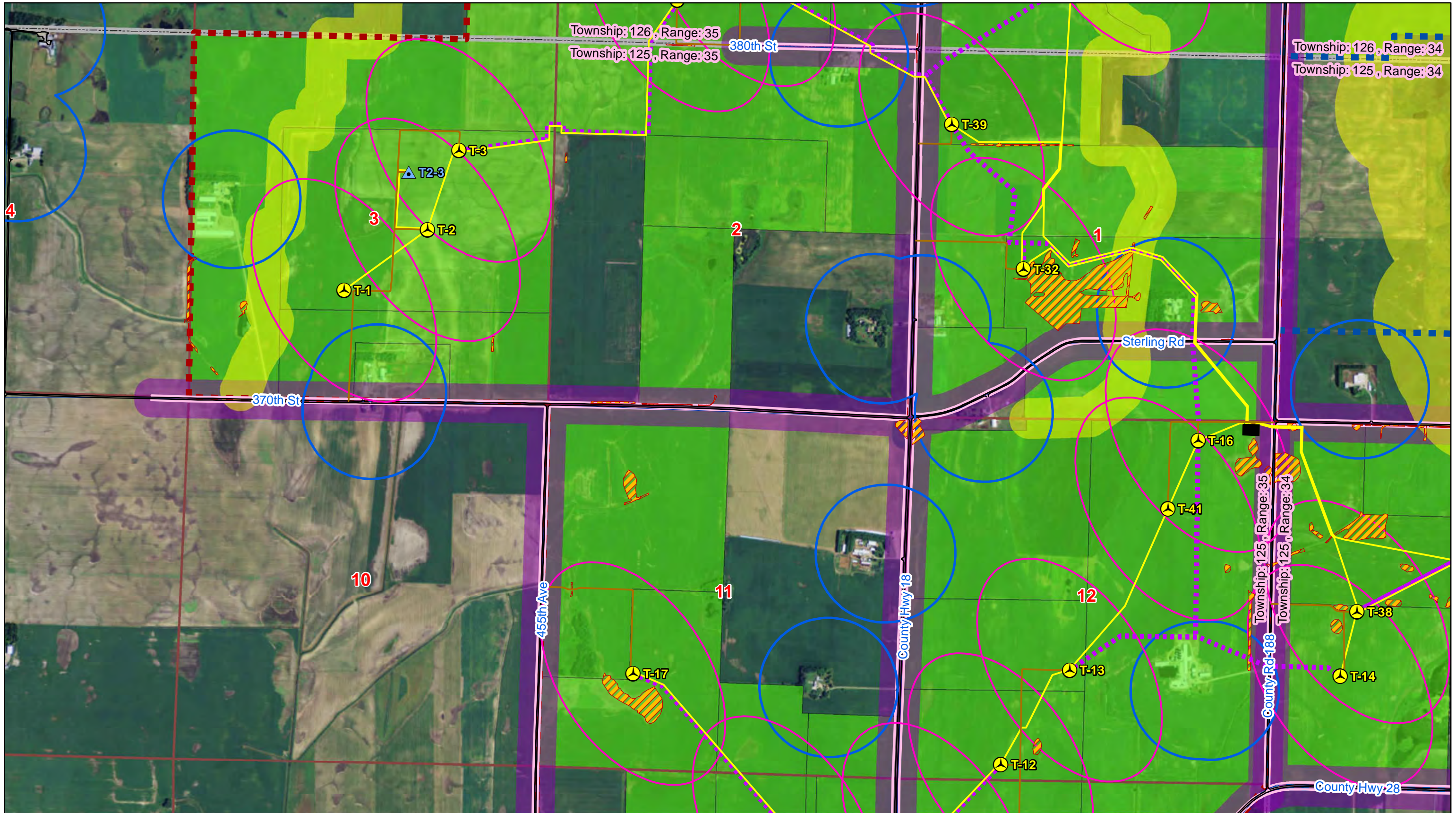
Constraints

Page: 1

January 19, 2016



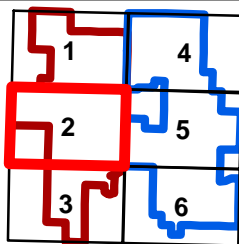
0 0.25 Miles



Data Source(s): Esri (2016); Westwood (2016).

Westwood

Toll Free (888) 937-5150 westwoodps.com
Westwood Professional Services, Inc.



Legend

- Turbine
- Met Tower
- Project Substation

- Access Roads
- Electric Collection System
- Crane Path (Primary)
- Crane Path (Secondary)

- Potential Native Prairie
- Wetlands (Delineated)
- Shoreland Overlay
- Residence (1000')
- Wind Resource Setback (3RDX5RD) (1082.6'x1804.5')

- Getty Project Boundary
- Black Oak Project Boundary
- Signed Parcel
- Township Boundary
- Section Boundary

- Public Road
- Right-of-Way
- Right-of-Way Buffer (250')

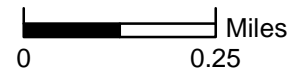
Black Oak Getty Wind Project

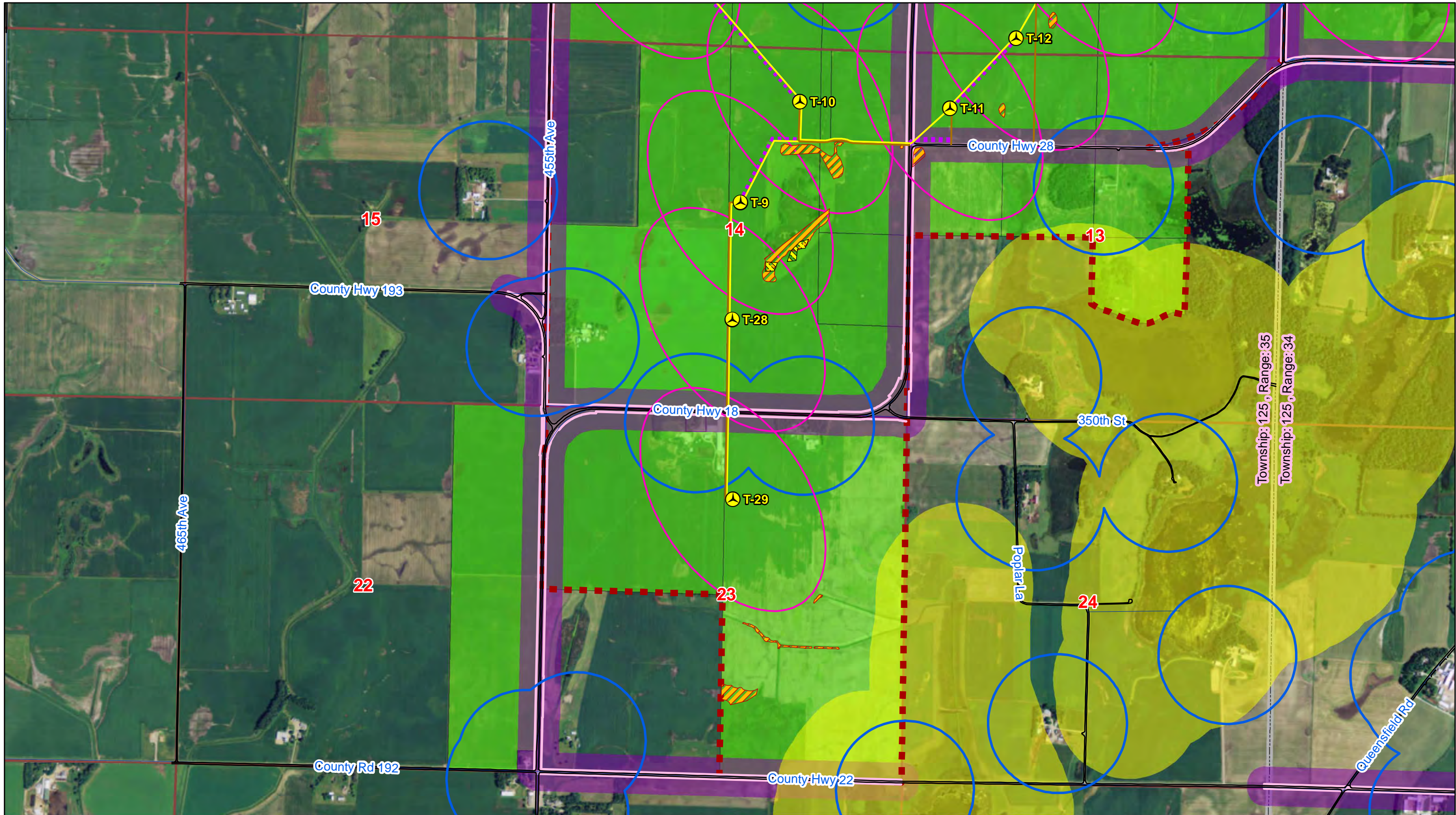
Stearns County, Minnesota

Constraints

Page: 2

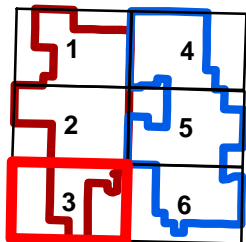
January 19, 2016





Data Source(s): Esri (2016); Westwood (2016).

Westwood
Toll Free (888) 937-5150 westwoodps.com
Westwood Professional Services, Inc.



Legend

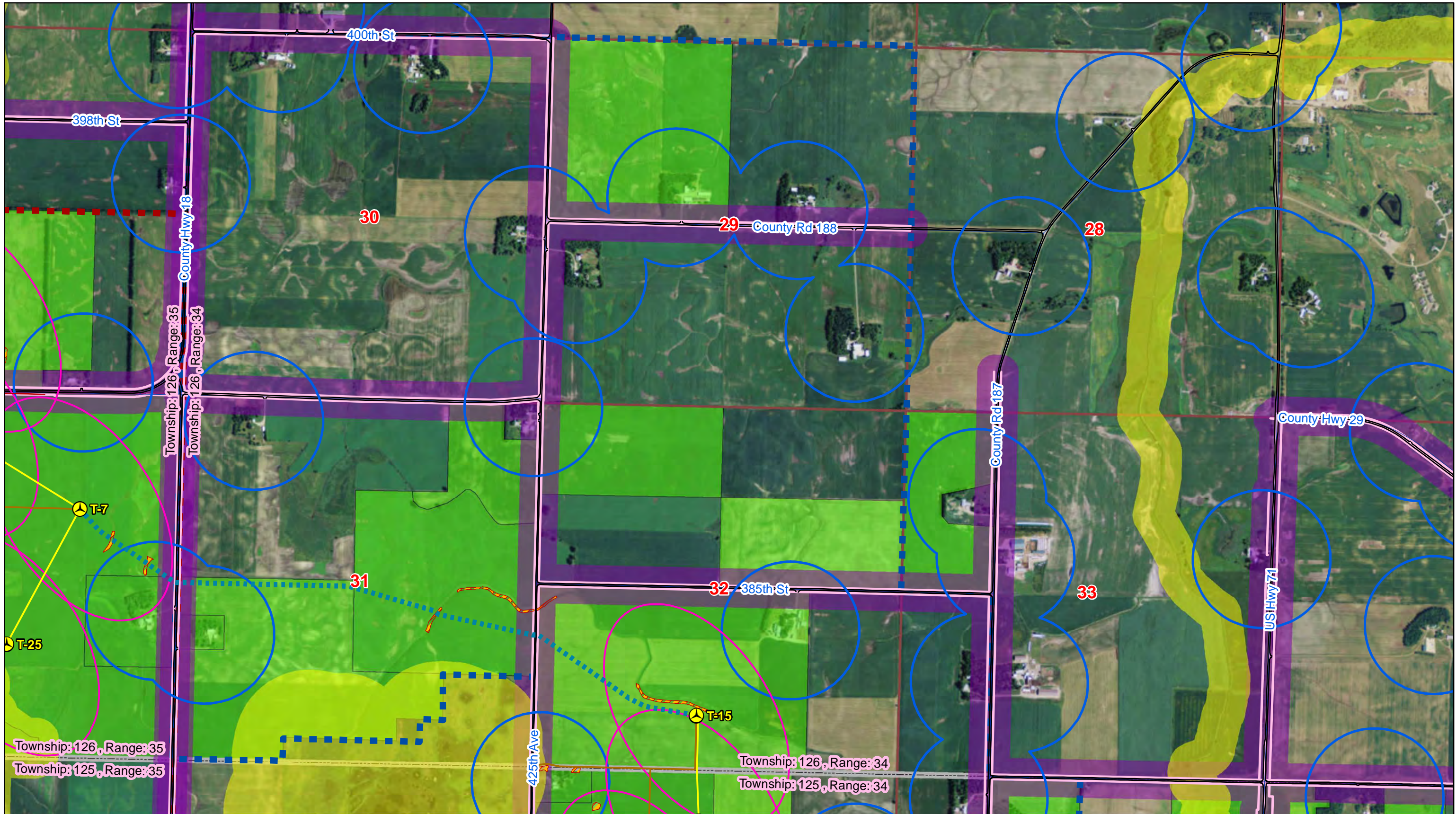
- | | | | | |
|--------------------|----------------------------|---|----------------------------|----------------------------|
| Turbine | Access Roads | Potential Native Prairie | Getty Project Boundary | Public Road |
| Met Tower | Electric Collection System | Wetlands (Delineated) | Black Oak Project Boundary | Right-of-Way |
| Project Substation | Crane Path (Primary) | Shoreland Overlay | Signed Parcel | Right-of-Way Buffer (250') |
| | Crane Path (Secondary) | Residence (1000') | Township Boundary | |
| | | Wind Resource Setback (3RDX5RD) (1082.6'x1804.5') | Section Boundary | |

Black Oak Getty Wind Project

Stearns County, Minnesota

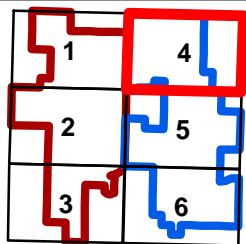
Constraints

Page: 3
January 19, 2016



Data Source(s): Esri (2016); Westwood (2016).

Westwood
Toll Free (888) 937-5150 westwoodps.com
Westwood Professional Services, Inc.



Legend

- | | | | | |
|--------------------|----------------------------|---|----------------------------|----------------------------|
| Turbine | Access Roads | Potential Native Prairie | Getty Project Boundary | Public Road |
| Met Tower | Electric Collection System | Wetlands (Delineated) | Black Oak Project Boundary | Right-of-Way |
| Project Substation | Crane Path (Primary) | Shoreland Overlay | Signed Parcel | Right-of-Way Buffer (250') |
| | Crane Path (Secondary) | Residence (1000') | Township Boundary | |
| | | Wind Resource Setback (3RDX5RD) (1082.6'x1804.5') | Section Boundary | |

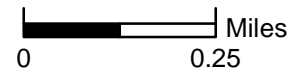
Black Oak Getty Wind Project

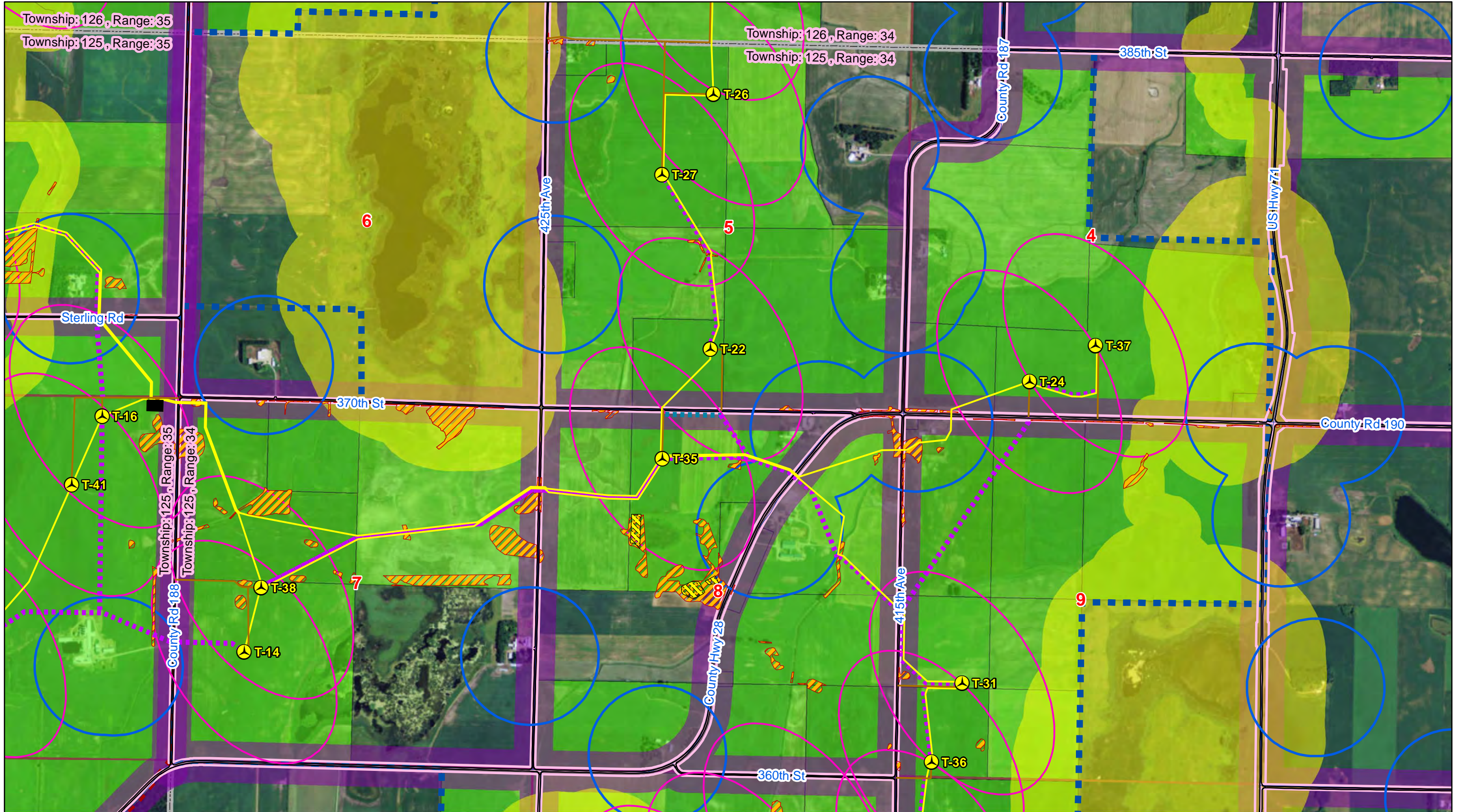
Stearns County, Minnesota

Constraints

Page: 4

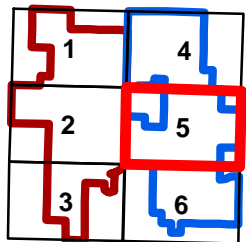
January 19, 2016





Data Source(s): Esri (2016); Westwood (2016).

Westwood
Toll Free (888) 937-5150 westwoodps.com
Westwood Professional Services, Inc.



Legend

- | | | | | |
|--------------------|----------------------------|---|----------------------------|----------------------------|
| Turbine | Access Roads | Potential Native Prairie | Getty Project Boundary | Public Road |
| Met Tower | Electric Collection System | Wetlands (Delineated) | Black Oak Project Boundary | Right-of-Way |
| Project Substation | Crane Path (Primary) | Shoreland Overlay | Signed Parcel | Right-of-Way Buffer (250') |
| | Crane Path (Secondary) | Residence (1000') | Township Boundary | |
| | | Wind Resource Setback (3RDX5RD) (1082.6'x1804.5') | Section Boundary | |

Black Oak Getty Wind Project

Stearns County, Minnesota

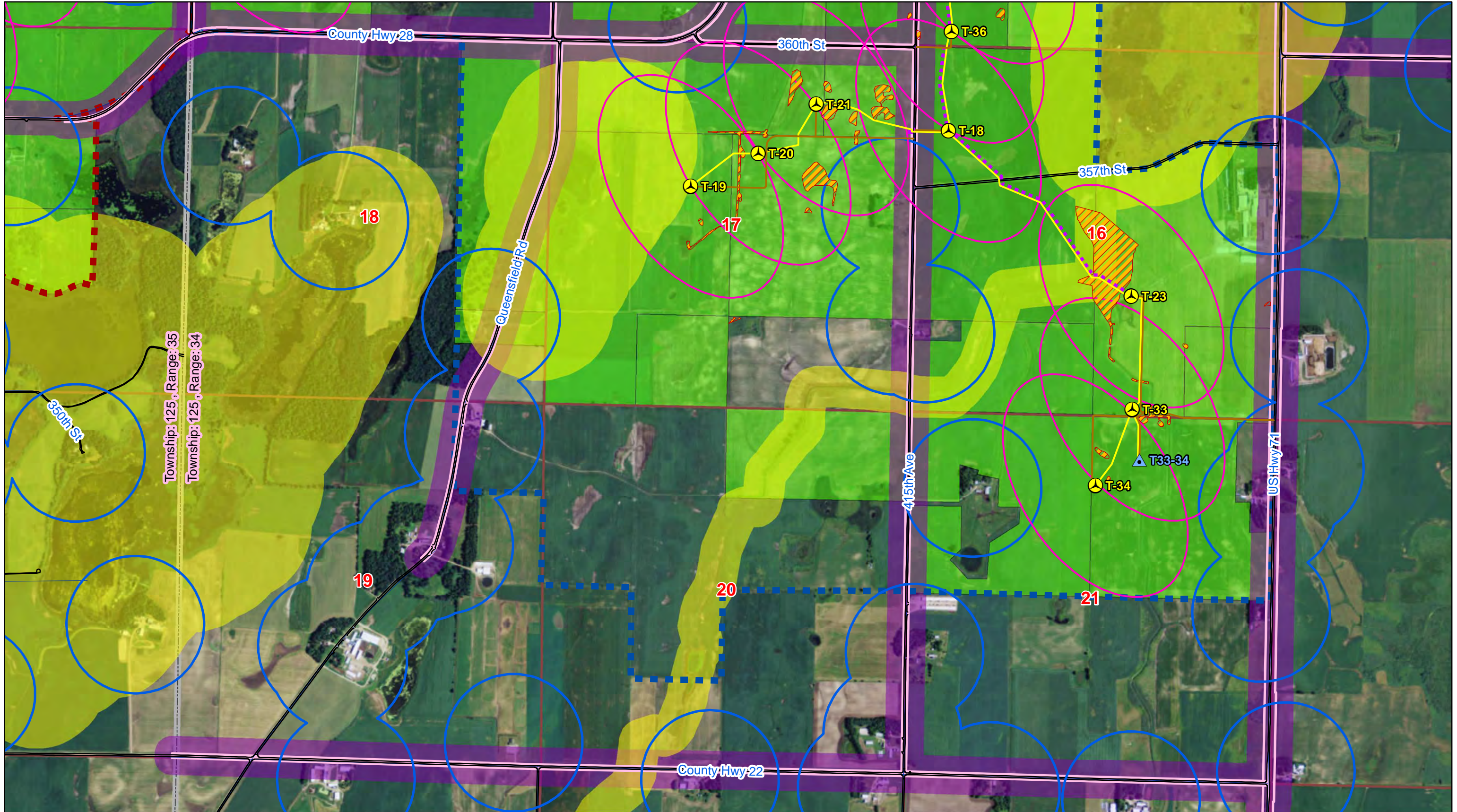
Constraints

Page: 5

January 19, 2016



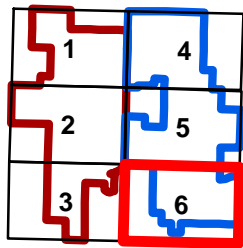
0 0.25 Miles



Data Source(s): Esri (2016); Westwood (2016).

Westwood

Toll Free (888) 937-5150 westwoodps.com
Westwood Professional Services, Inc.



Legend

- | | | | | |
|--------------------|----------------------------|---|----------------------------|----------------------------|
| Turbine | Access Roads | Potential Native Prairie | Getty Project Boundary | Public Road |
| Met Tower | Electric Collection System | Wetlands (Delineated) | Black Oak Project Boundary | Right-of-Way |
| Project Substation | Crane Path (Primary) | Shoreland Overlay | Signed Parcel | Right-of-Way Buffer (250') |
| | Crane Path (Secondary) | Residence (1000') | Township Boundary | |
| | | Wind Resource Setback (3RDX5RD) (1082.6'x1804.5') | Section Boundary | |

Black Oak Getty Wind Project

Stearns County, Minnesota

Constraints

Page: 6

January 19, 2016



0 0.25 Miles