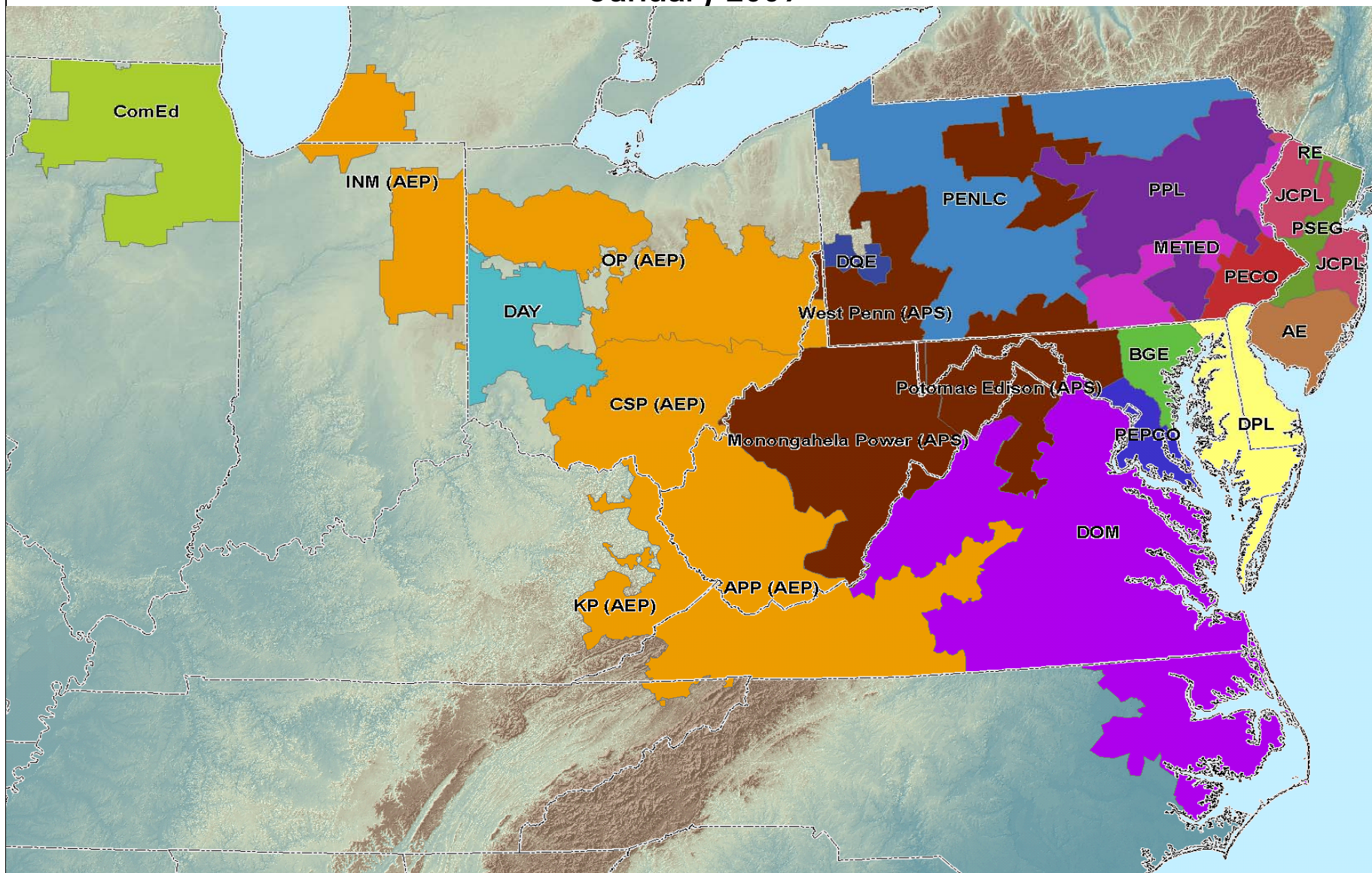


PJM Load Forecast Report January 2009



Prepared by PJM Capacity Adequacy Planning Department

TABLE OF CONTENTS

	TABLE NUMBER	CHART PAGE	TABLE PAGE
EXECUTIVE SUMMARY			1
FORECAST COMPARISON:			
Each Zone and PJM RTO – Comparison to Prior Summer Peak Forecasts	A-1		24
Each Zone and PJM RTO – Comparison to Prior Winter Peak Forecasts	A-2		26
PEAK LOAD FORECAST AND ANNUAL GROWTH RATES:			
Seasonal Unrestricted PJM Peak Forecast			28
Summer Peak Forecasts and Growth Rates of each Zone, Geographic Region and PJM RTO	B-1	3, 5-23	30
Winter Peak Forecasts and Growth Rates of each Zone, Geographic Region and PJM RTO	B-2	4, 5-23	34
Spring Peak Forecasts of each Zone, Geographic Region and PJM RTO	B-3		38
Fall Peak Forecasts of each Zone, Geographic Region and PJM RTO	B-4		40
Monthly Peak Forecasts of each Zone, Geographic Region and PJM RTO	B-5		42
Monthly Peak Forecasts of FE/GPU and PLGrp	B-6		44
Load Management Placed Under PJM Coordination by Zone, used in Planning	B-7		45
Energy Efficiency Programs used in Planning	B-8		47
Adjustments to Summer Peak Forecasts	B-9		49
Summer Coincident Peak Load Forecasts of each Zone, Locational Deliverability Area and PJM RTO (RPM Forecast)	B-10		50

	TABLE NUMBER	CHART PAGE	TABLE PAGE
LOCATIONAL DELIVERABILITY AREA			
SEASONAL PEAKS:			
Central Mid-Atlantic: BGE, MetEd, PEPCO, PL and UGI Seasonal Peaks	C-1		51
Western Mid-Atlantic: MetEd, PENLC, PL and UGI Seasonal Peaks	C-2		52
Eastern Mid-Atlantic: AE, DPL, JCPL, PECO, PS and RECO Seasonal Peaks	C-3		53
Southern Mid-Atlantic: BGE and PEPCO Seasonal Peaks	C-4		54
Mid-Atlantic and APS: AE, APS, BGE, DPL, JCPL, MetEd, PECO, PNLC, PEPCO, PS, RECO and UGI Seasonal Peaks	C-5		55
EXTREME WEATHER (90/10) PEAK LOAD FORECASTS:			
Summer 90/10 Peak Forecasts of each Zone, Geographic Region and PJM RTO	D-1		56
Winter 90/10 Peak Forecasts of each Zone, Geographic Region and PJM RTO	D-2		58
NET ENERGY FORECAST AND ANNUAL GROWTH RATES:			
Annual Net Energy Forecasts of each Zone, Geographic Region and PJM RTO	E-1		60
Monthly Net Energy Forecasts of each Zone, Geographic Region and PJM RTO	E-2		64
Monthly Net Energy Forecasts of FE/GPU and PLGrp	E-3		66
PJM HISTORICAL DATA:			
Historical RTO Summer and Winter Peaks	F-1		67
Historical RTO Net Energy	F-2		68
ECONOMIC GROWTH:			
Average Economic Growth of each Zone and RTO	G-1		69

TERMS AND ABBREVIATIONS USED IN THIS REPORT

AE	Atlantic Electric zone (part of Pepco Holdings, Inc)
AEP	American Electric Power zone (incorporated 10/1/2004)
APP	Appalachian Power, sub-zone of AEP
APS	Allegheny Power zone (incorporated 4/1/2002)
Base Load	Average peak load on non-holiday weekdays with no heating or cooling load. Base load is insensitive to weather.
BGE	Baltimore Gas & Electric zone
COMED	Commonwealth Edison zone (incorporated 5/1/2004)
Contractually Interruptible	Load Management from customers responding to direction from a control center
Cooling Load	The weather-sensitive portion of summer peak load
CSP	Columbus Southern Power, sub-zone of AEP
Direct Control	Load Management achieved directly by a signal from a control center
DAY	Dayton Power & Light zone (incorporated 10/1/2004)
DLCO	Duquesne Lighting Company zone (incorporated 1/1/2005)
DPL	Delmarva Power & Light zone (part of Pepco Holdings, Inc)
FE/GPU	The combination of FirstEnergy's Jersey Central Power & Light, Metropolitan Edison, and Pennsylvania Electric zones (formerly GPU)
Heating Load	The weather-sensitive portion of winter peak load
INM	Indiana Michigan Power, sub-zone of AEP
JCPL	Jersey Central Power & Light zone
KP	Kentucky Power, sub-zone of AEP
METED	Metropolitan Edison zone
MP	Monongahela Power, sub-zone of APS
Net Energy	Net Energy for Load, measured as net generation of main generating units plus energy receipts minus energy deliveries
OP	Ohio Power, sub-zone of AEP
PECO	PECO Energy zone

PED	Potomac Edison, sub-zone of APS
PEPCO	Potomac Electric Power zone (part of Pepco Holdings, Inc)
PL	PPL Electric Utilities, sub-zone of PLGroup
PLGroup/PLGRP	Pennsylvania Power & Light zone
PENLC	Pennsylvania Electric zone
PS	Public Service Electric & Gas zone
RECO	Rockland Electric (East) zone (incorporated 3/1/2002)
UGI	UGI Utilities, sub-zone of PLGroup
WP	West Penn Power, sub-zone of APS
Zone	Areas within the PJM Control Area, as defined in the PJM Reliability Assurance Agreement

2009 PJM LOAD FORECAST REPORT

EXECUTIVE SUMMARY

- This report presents an independent load forecast prepared by PJM staff.
- The report includes long-term forecasts of peak loads, net energy and load management for each PJM zone, region, and the total RTO.
- Several new tables appear in this year's report:
 - Table B-8 presents the projected impact of energy efficiency (EE) programs which have cleared in Reliability Pricing Model (RPM) auctions, and will be used in the PJM planning process (the impacts will be removed once the EE is in place and reflected in the metered load);
 - Table B-9 presents adjustments made to the load forecast model by PJM staff to account for large load shifts deemed to not be captured in the forecast model; and
 - Table G-1 presents five-, ten- and fifteen-year average growth rates of Gross Metropolitan Product for each zone and the total RTO.
- The Load Management assumptions shown in Table B-7 are now derived by using the summation of the amount of Demand Resources cleared in RPM auctions plus the five-year average of Interruptible Load for Reliability. The assumptions vary for the first three years of the forecast then remain constant.
- The PJM RTO weather normalized summer peak for 2008 was 136,315 MW. The projection for the 2009 PJM RTO summer peak is 134,428 MW, a decrease of 1,887 MW, or 1.4%, from the 2008 normalized peak. An economic recession, as forecasted by Moody's Economy.com, will lead a majority of PJM zones to experience negative load growth from 2008 to 2009.
- An economic rebound in 2010 causes load growth to resume in 2010, though summer peak load will not exceed the 2008 level until 2011. Summer peak load growth for PJM RTO is projected to average 1.7% per year over the next 10 years, and 1.4% over the next 15 years. The PJM RTO summer peak is forecasted to be 158,617 MW in 2019, a 10-year increase of 24,189 MW, and reaches 166,581 MW in 2024, a 15-year increase of 32,153 MW. Annualized 10-year growth rates for individual zones range from 0.9% to 2.8%.
- Winter peak load growth for PJM RTO is projected to average 1.2% per year over the next 10-year period, and 1.1% over the next 15-years. The PJM RTO winter peak load in 2018/19 is forecasted to be 127,440 MW, a 10-year increase of 14,877 MW, and reaches 132,599 MW in 2023/24, a 15-year increase of 20,036 MW. Annualized 10-year growth rates for individual zones range from 0.5 to 2.4%.

- Compared to the 2008 Load Report, the new forecast shows the following changes for three years of interest:
 - The next delivery year – 2009 -5,979 MW (4.3%)
 - The next RPM auction year – 2012 -2,570 MW (1.7%)
 - The next RTEP study year – 2014 -2,178 MW (1.4%)

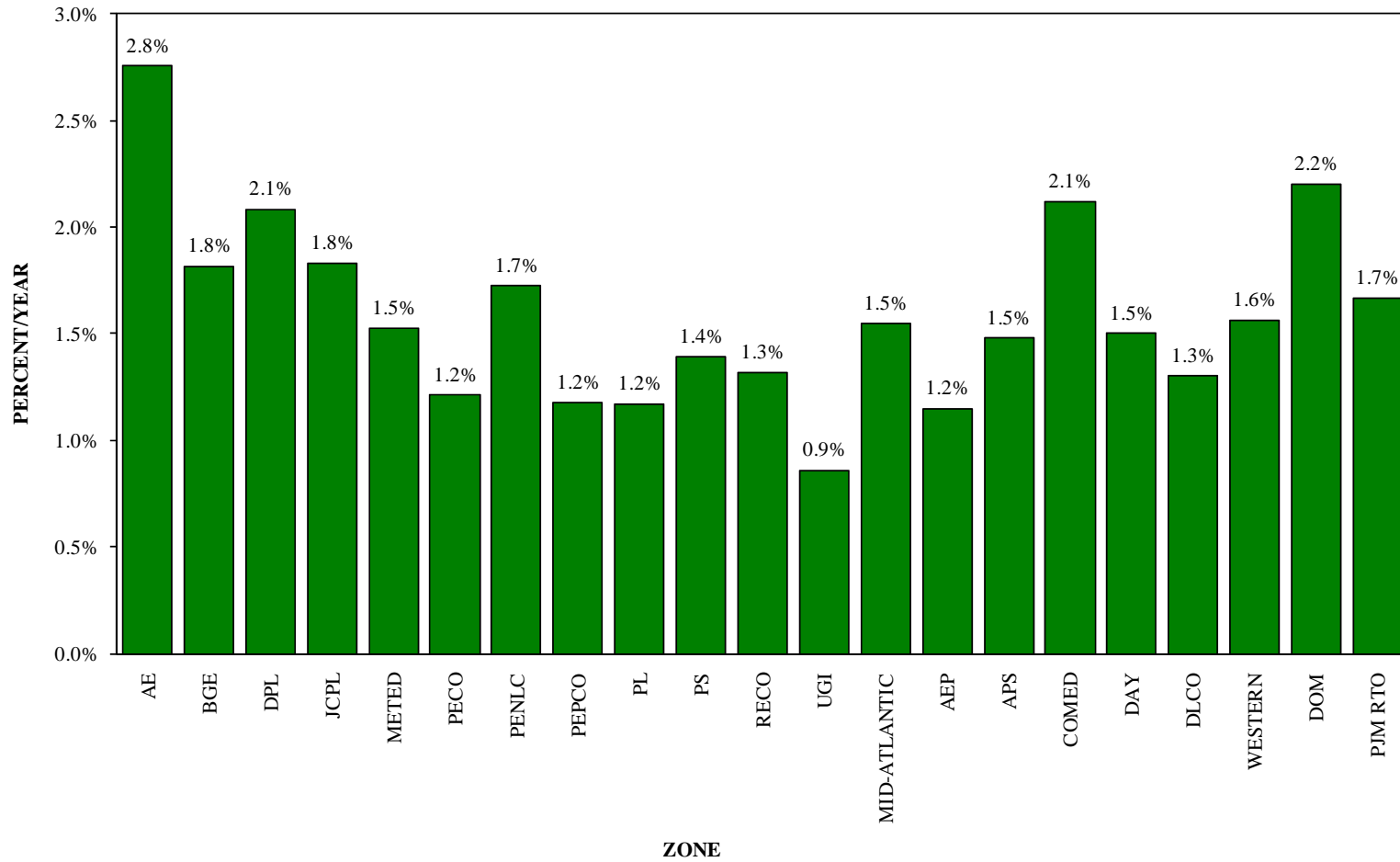
- Several zones have notably different load growth patterns compared to the 2008 Load Report. Two zones have a different economic outlook: BGE zone is expected to have accelerated load growth as a result of the U.S. military's Base Realignment and Closure program, while PENLC zone's economic outlook is bolstered by revisions to the Erie and Altoona, PA forecasts to make them more consistent with their long-term historical Gross Metropolitan Product growth rate. The growth outlook for two zones (AEP and APS) has been impacted by an enhancement to PJM's forecast model to account for large historical load shifts.

- Based on the forecast contained within this report, the PJM RTO will continue to be summer peaking during the next 15 years.

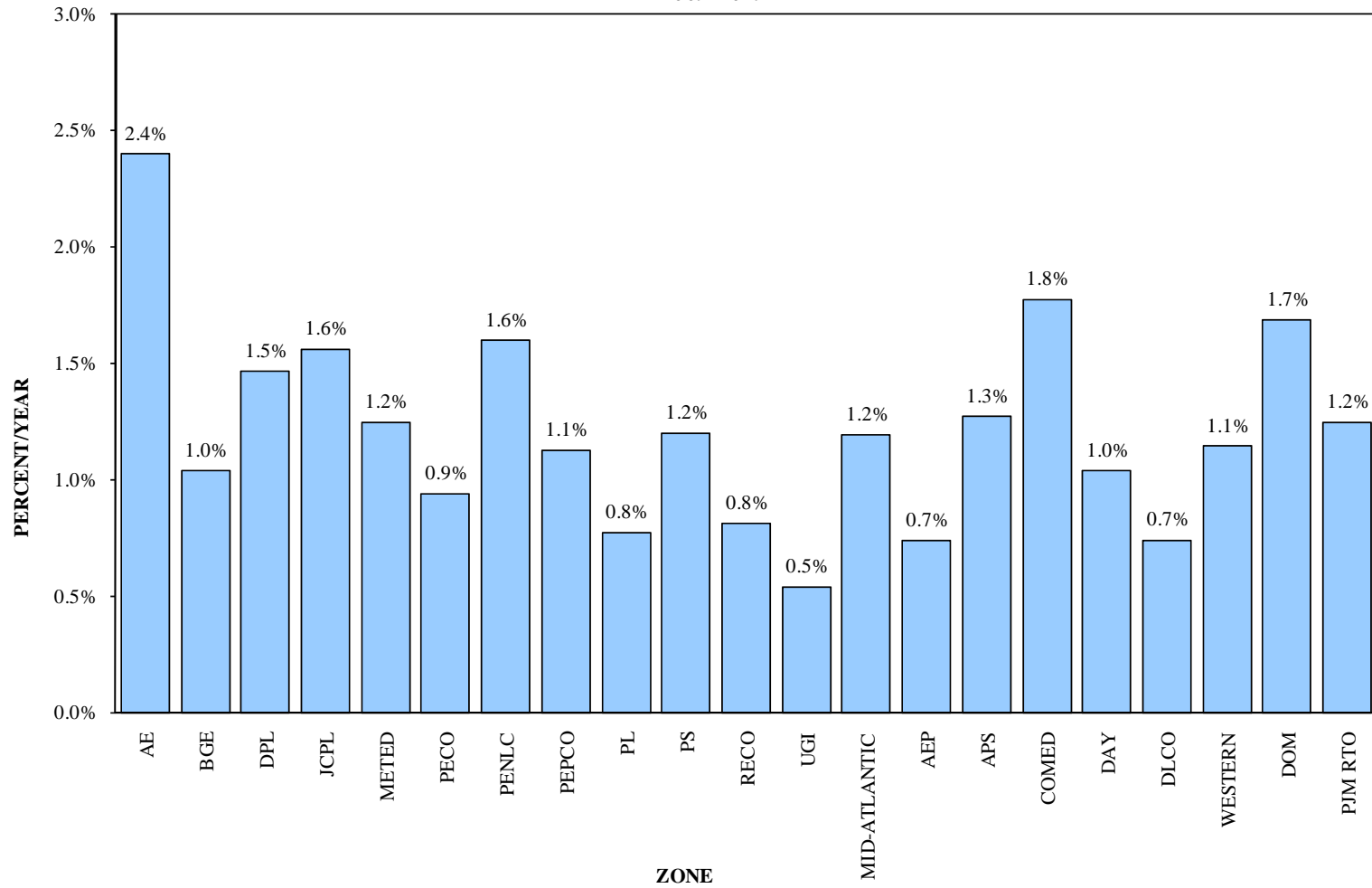
NOTE:

All compound growth rates are calculated from the first year of the forecast.

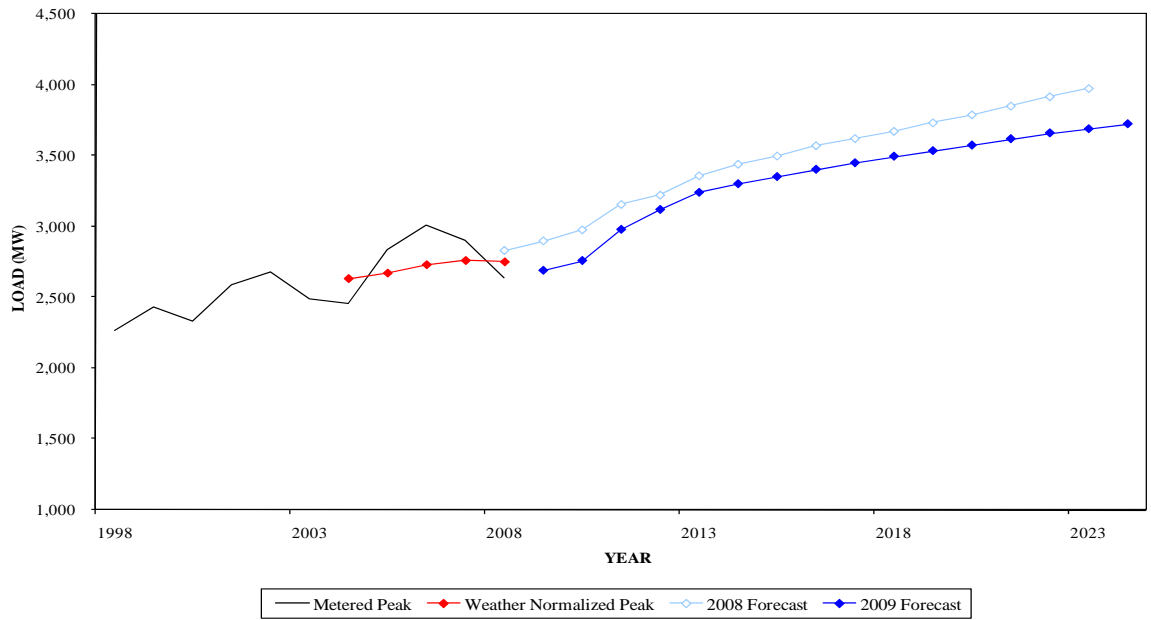
**PJM SUMMER PEAK LOAD GROWTH RATE
2009-2019**



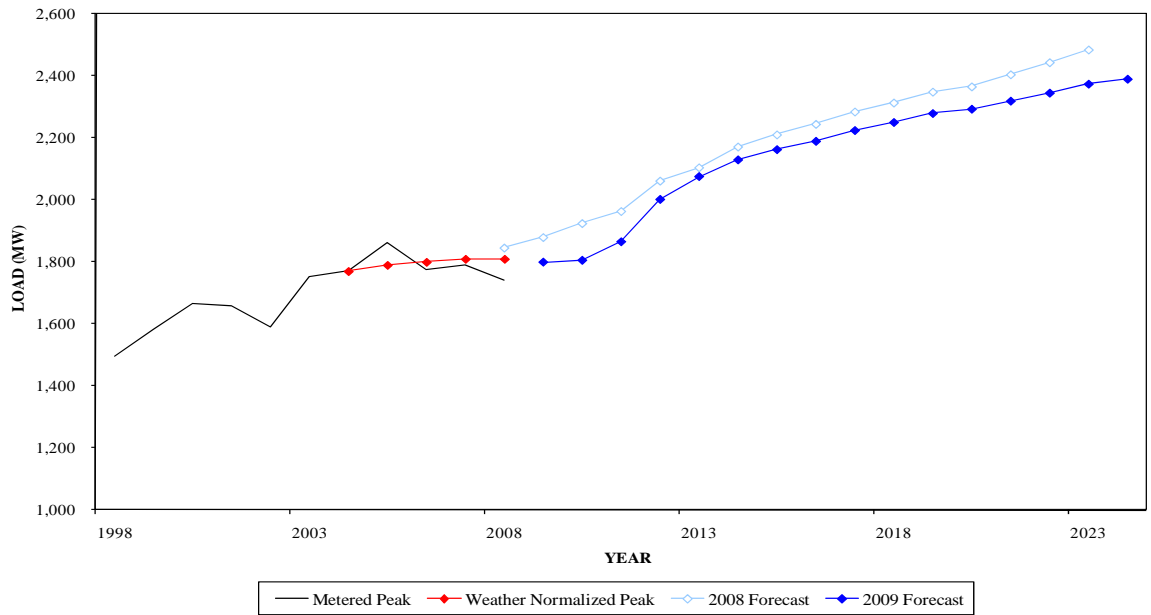
**PJM WINTER PEAK LOAD GROWTH RATE
2009-2019**



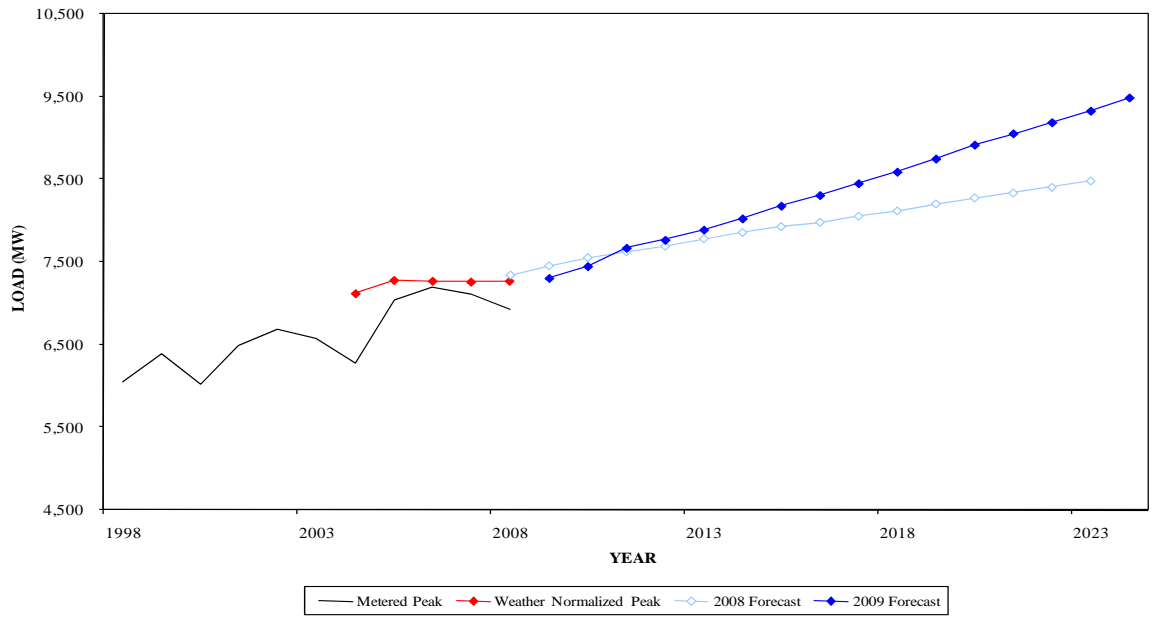
**SUMMER PEAK DEMAND FOR AE
GEOGRAPHIC ZONE**



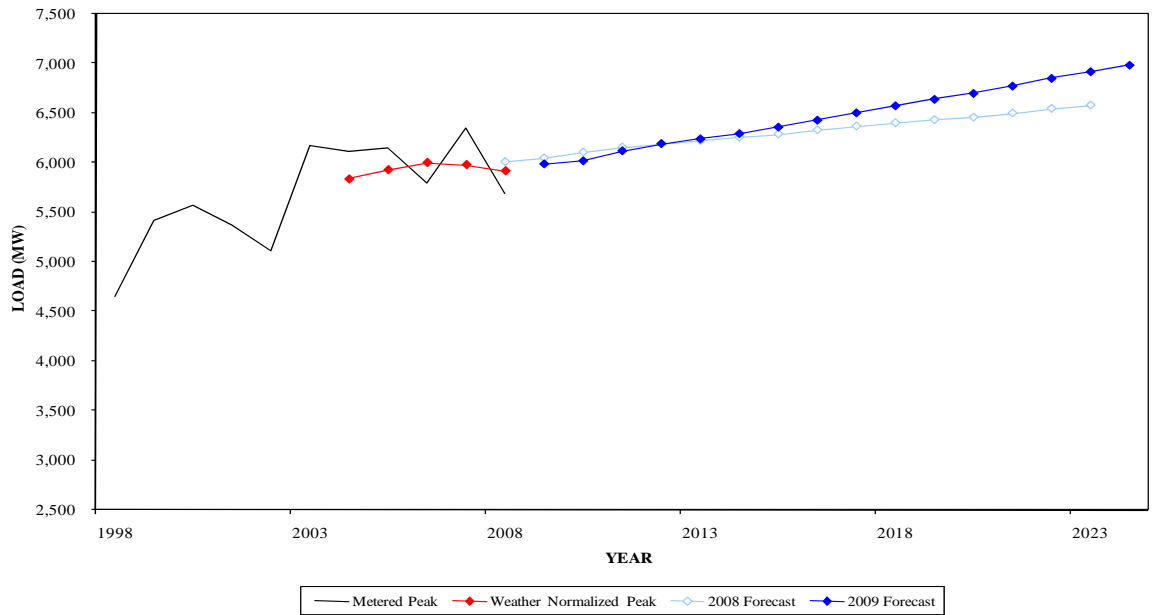
**WINTER PEAK DEMAND FOR AE
GEOGRAPHIC ZONE**



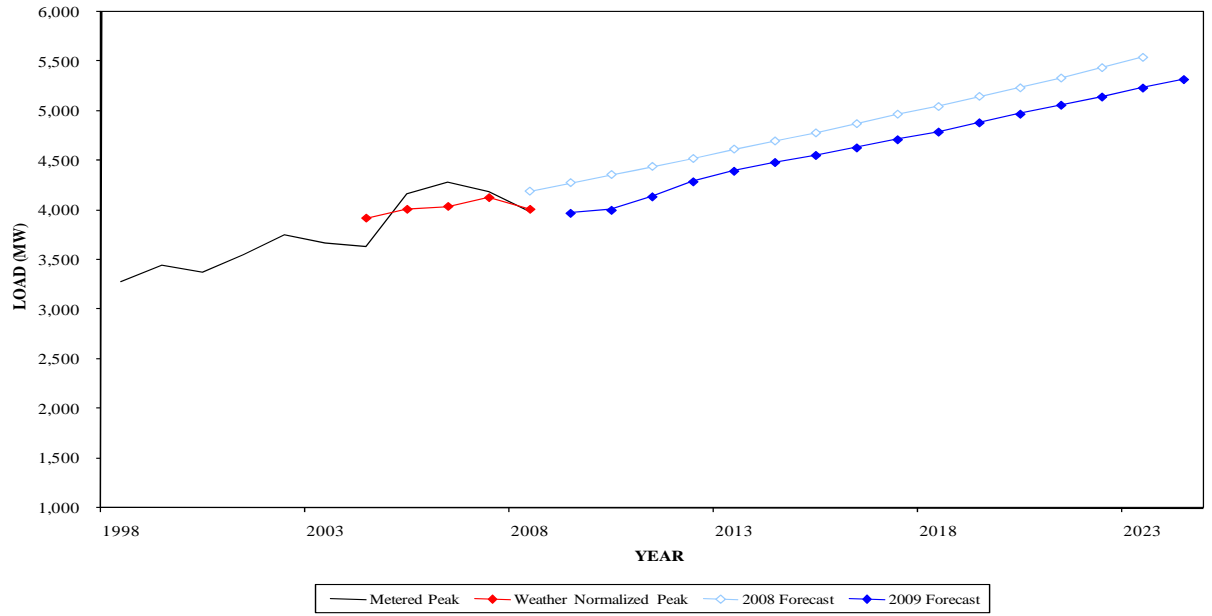
**SUMMER PEAK DEMAND FOR BGE
GEOGRAPHIC ZONE**



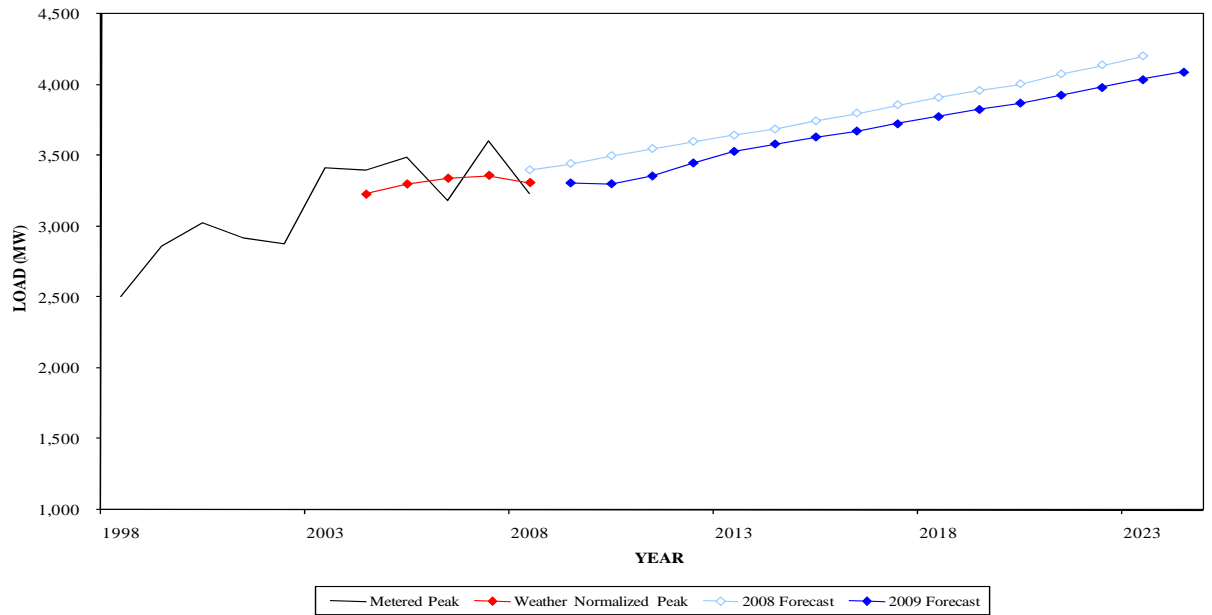
**WINTER PEAK DEMAND FOR BGE
GEOGRAPHIC ZONE**



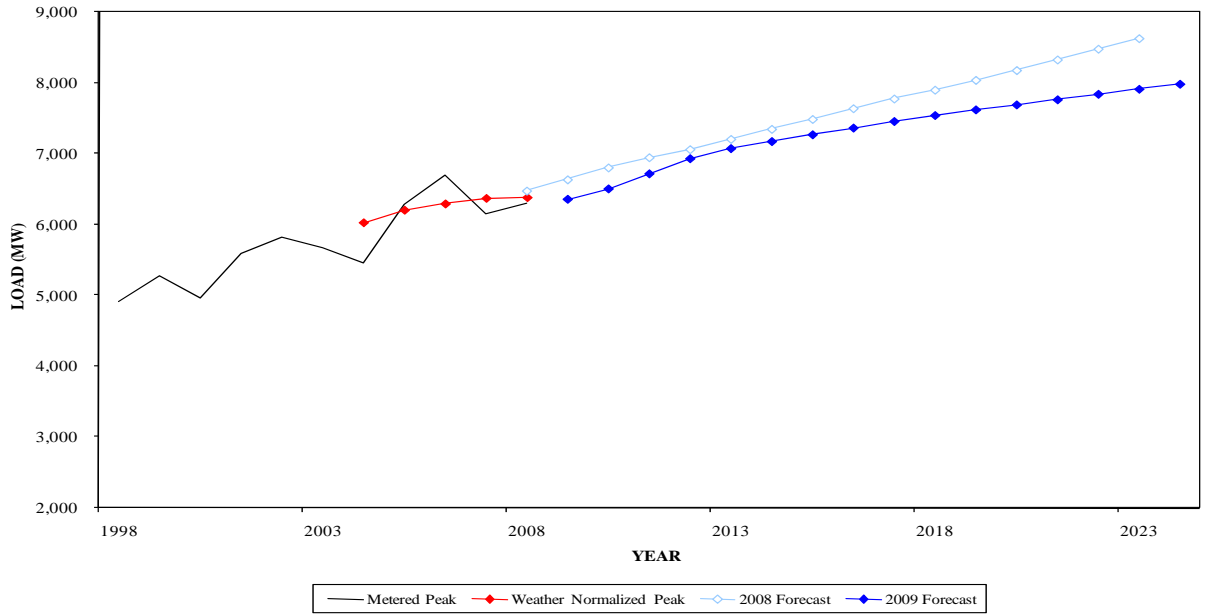
**SUMMER PEAK DEMAND FOR DPL
GEOGRAPHIC ZONE**



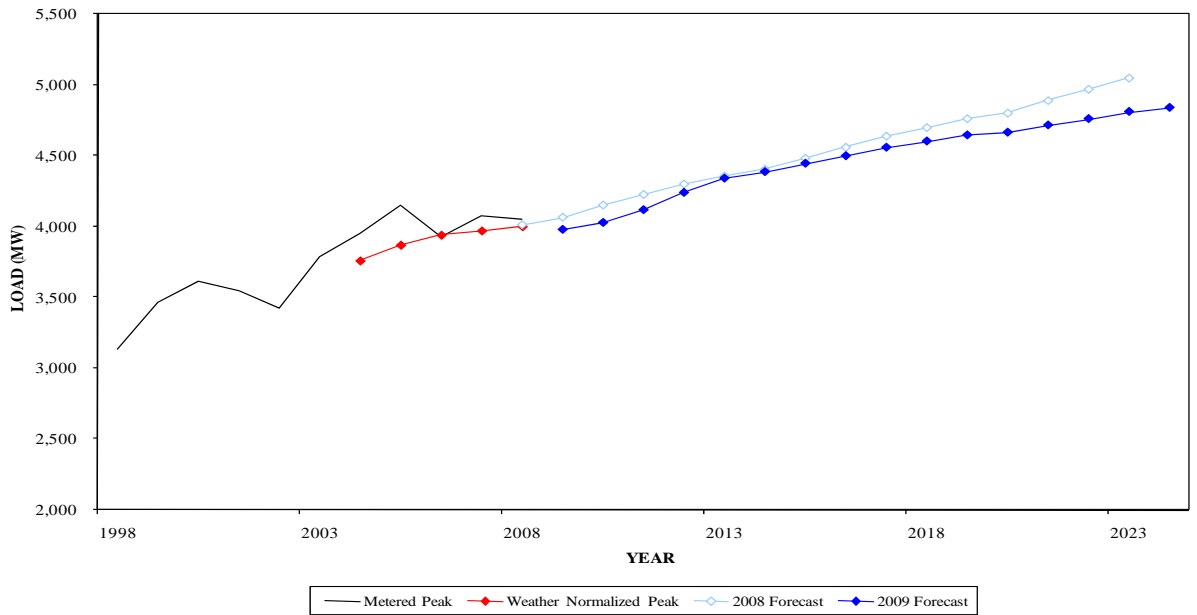
**WINTER PEAK DEMAND FOR DPL
GEOGRAPHIC ZONE**



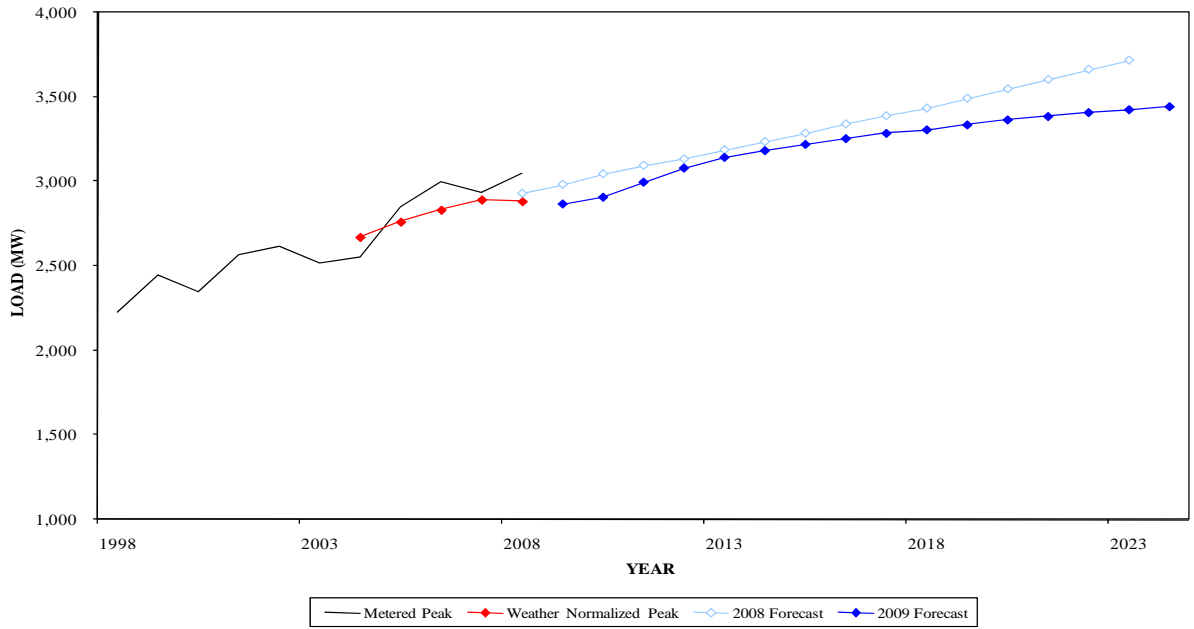
**SUMMER PEAK DEMAND FOR JCPL
GEOGRAPHIC ZONE**



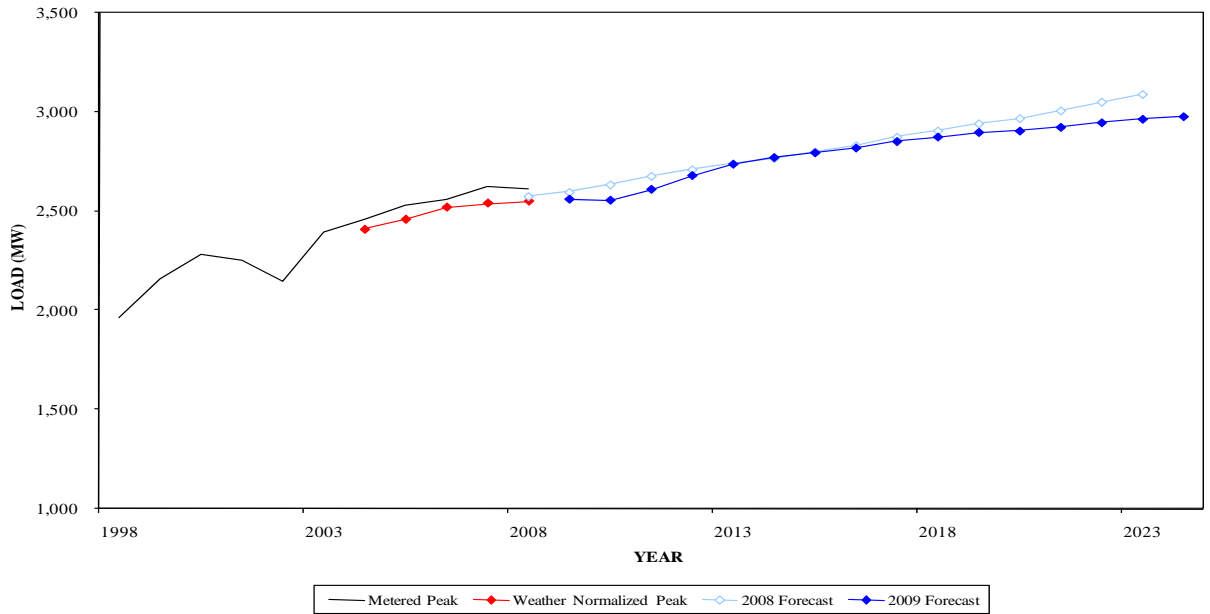
**WINTER PEAK DEMAND FOR JCPL
GEOGRAPHIC ZONE**



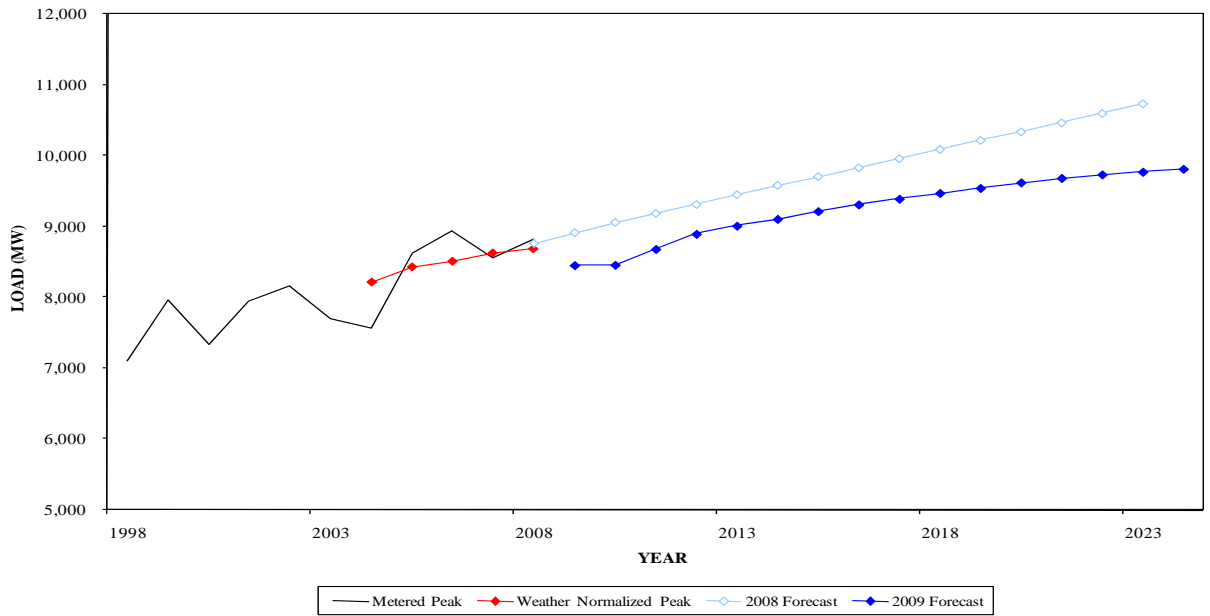
**SUMMER PEAK DEMAND FOR METED
GEOGRAPHIC ZONE**



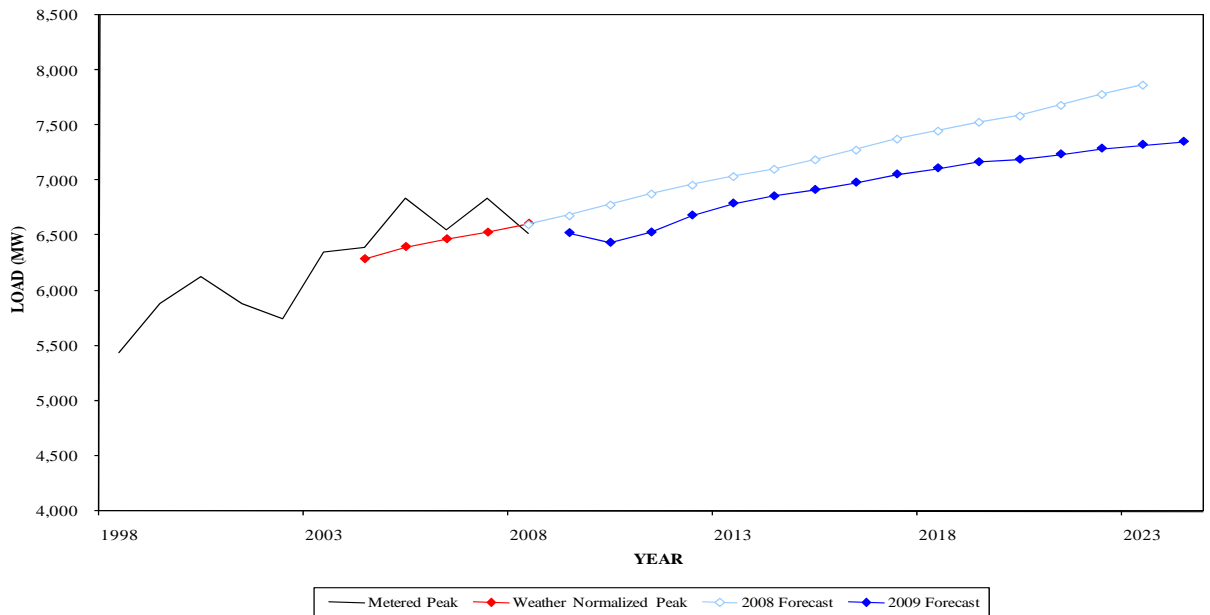
**WINTER PEAK DEMAND FOR METED
GEOGRAPHIC ZONE**



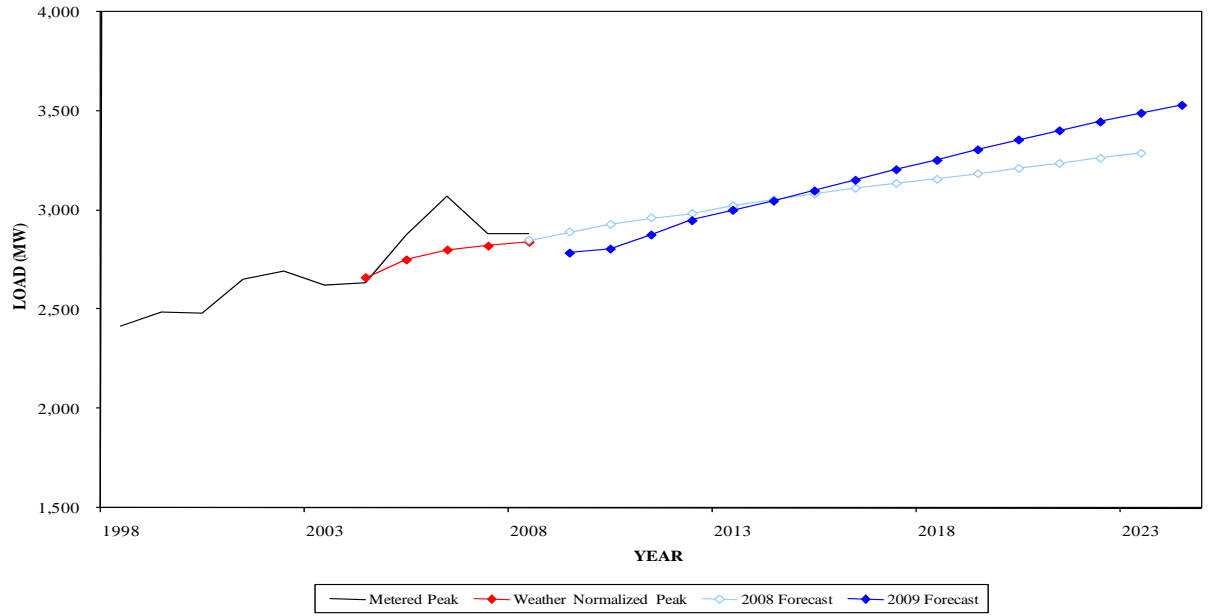
**SUMMER PEAK DEMAND FOR PECO
GEOGRAPHIC ZONE**



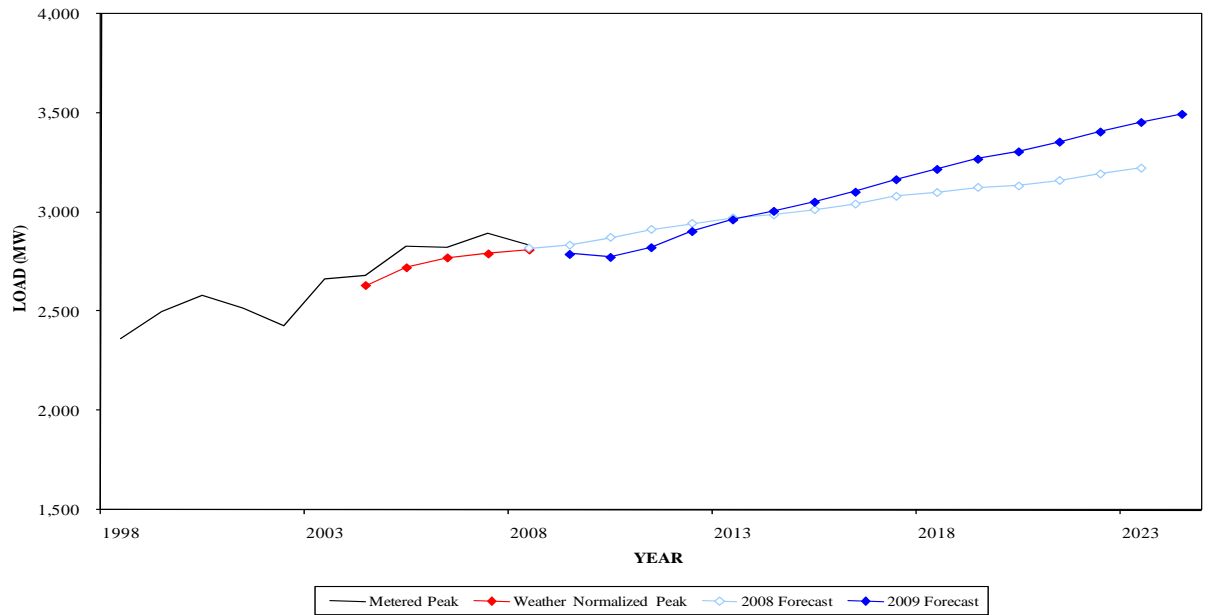
**WINTER PEAK DEMAND FOR PECO
GEOGRAPHIC ZONE**



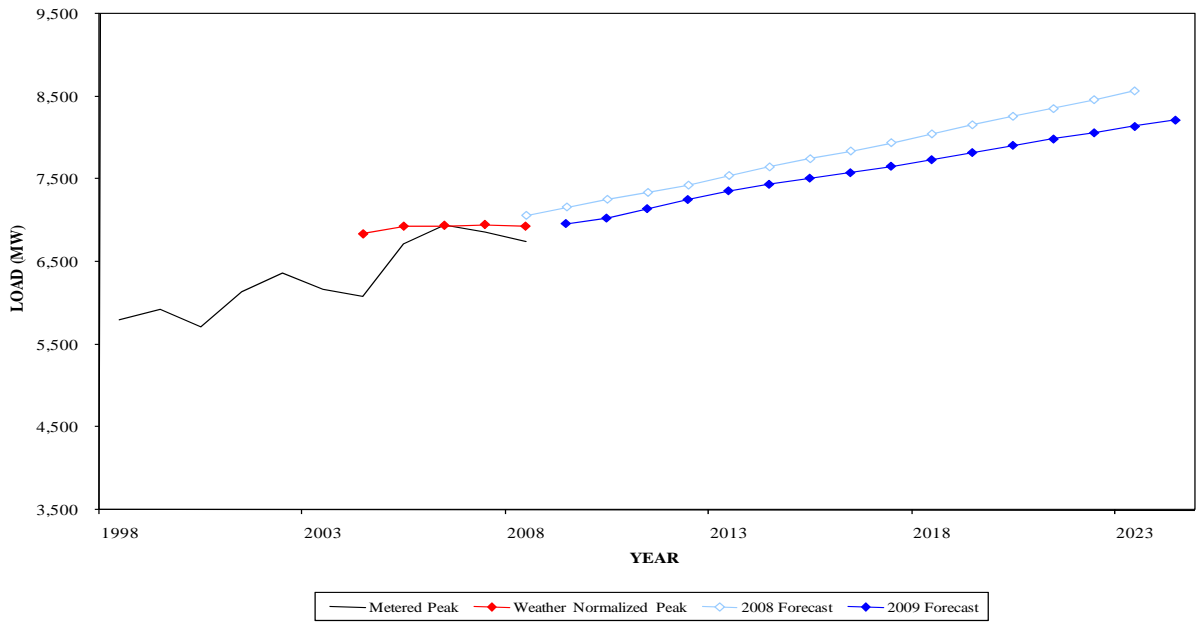
**SUMMER PEAK DEMAND FOR PENLC
GEOGRAPHIC ZONE**



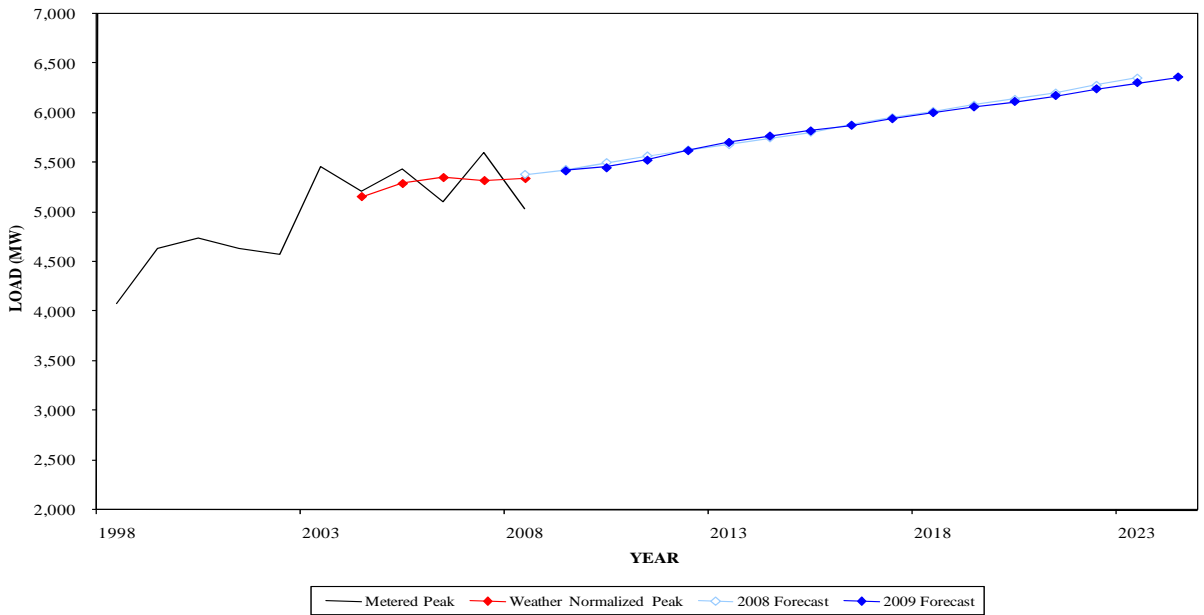
**WINTER PEAK DEMAND FOR PENLC
GEOGRAPHIC ZONE**



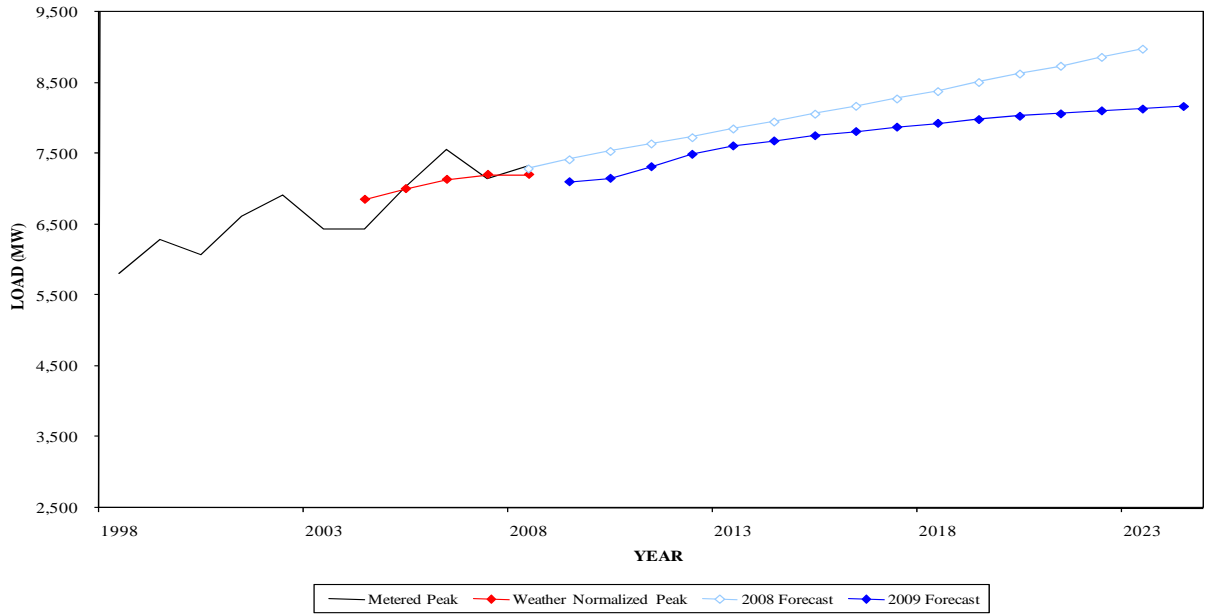
**SUMMER PEAK DEMAND FOR PEPCO
GEOGRAPHIC ZONE**



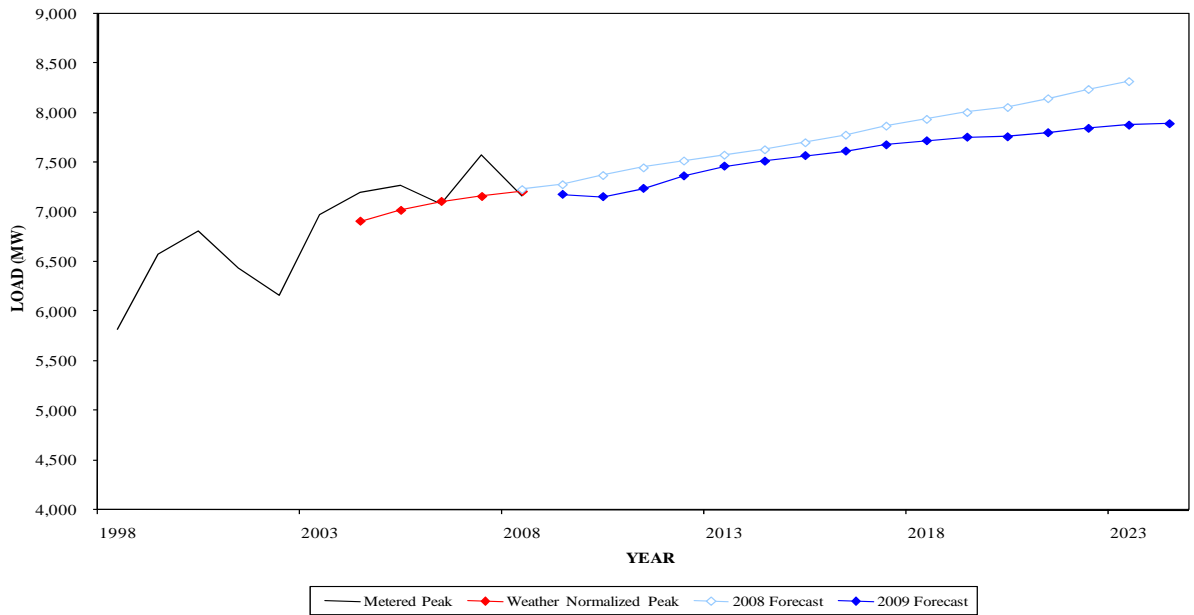
**WINTER PEAK DEMAND FOR PEPCO
GEOGRAPHIC ZONE**



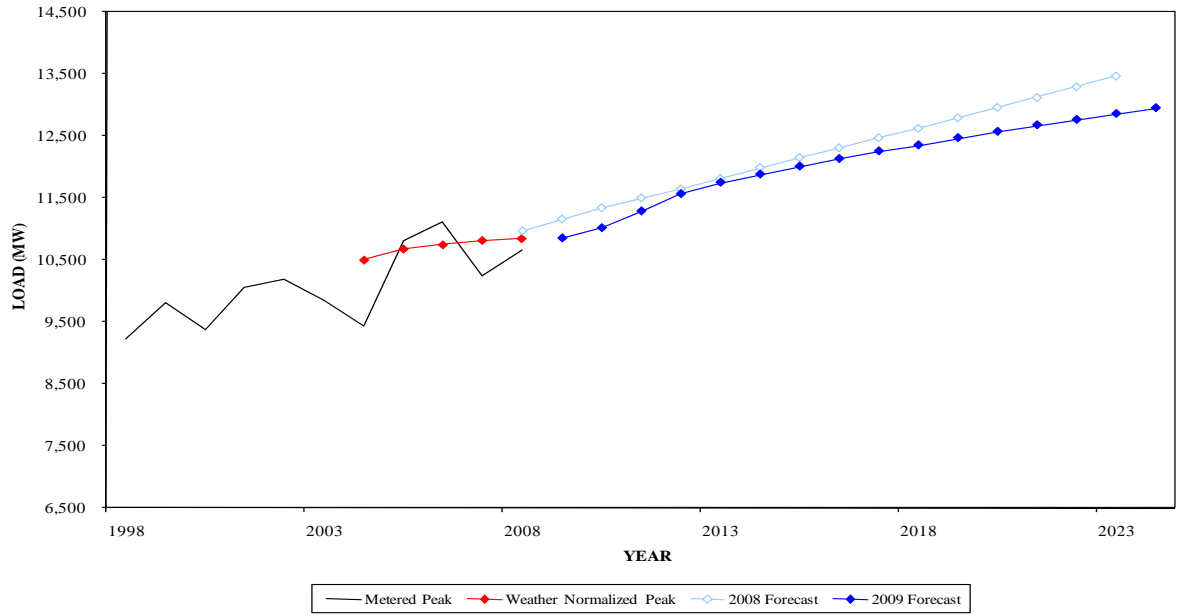
**SUMMER PEAK DEMAND FOR PL
GEOGRAPHIC ZONE**



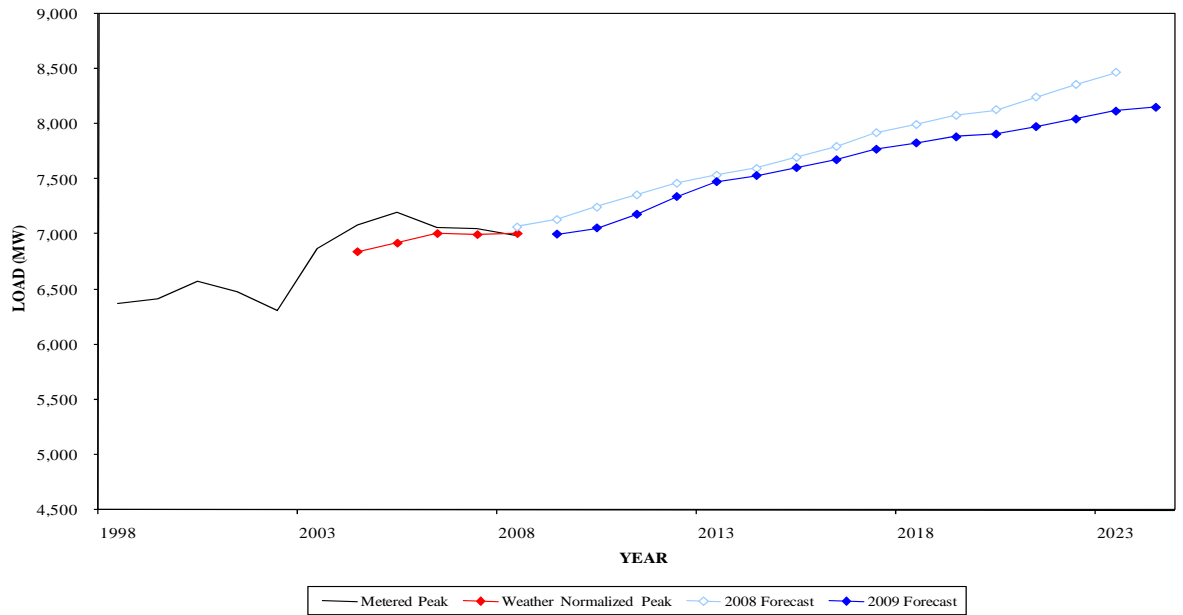
**WINTER PEAK DEMAND FOR PL
GEOGRAPHIC ZONE**



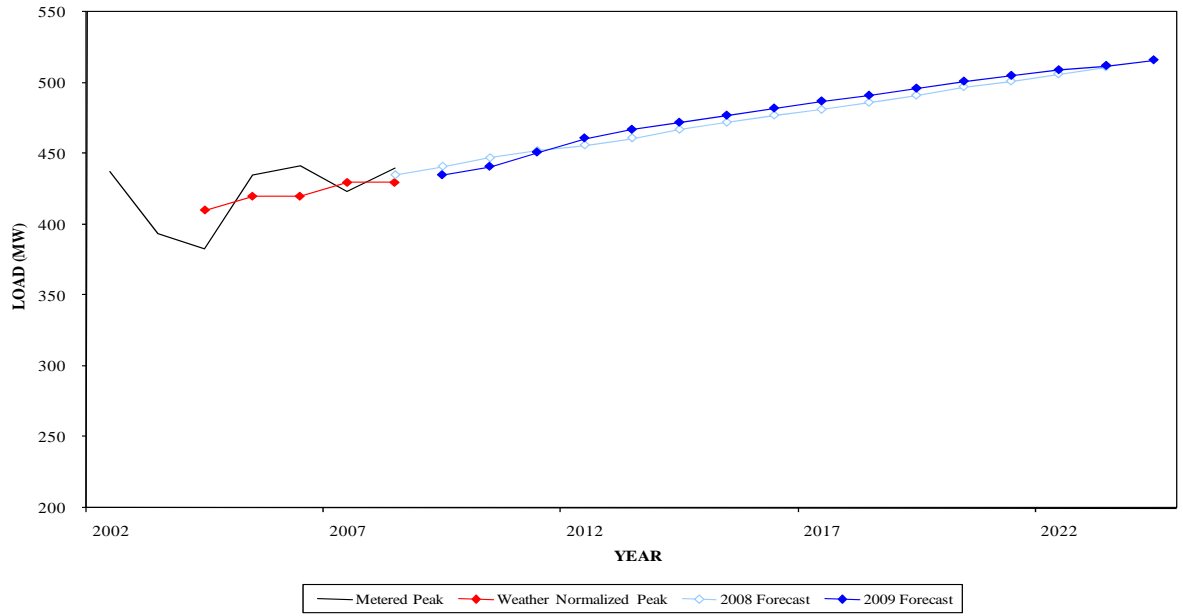
**SUMMER PEAK DEMAND FOR PS
GEOGRAPHIC ZONE**



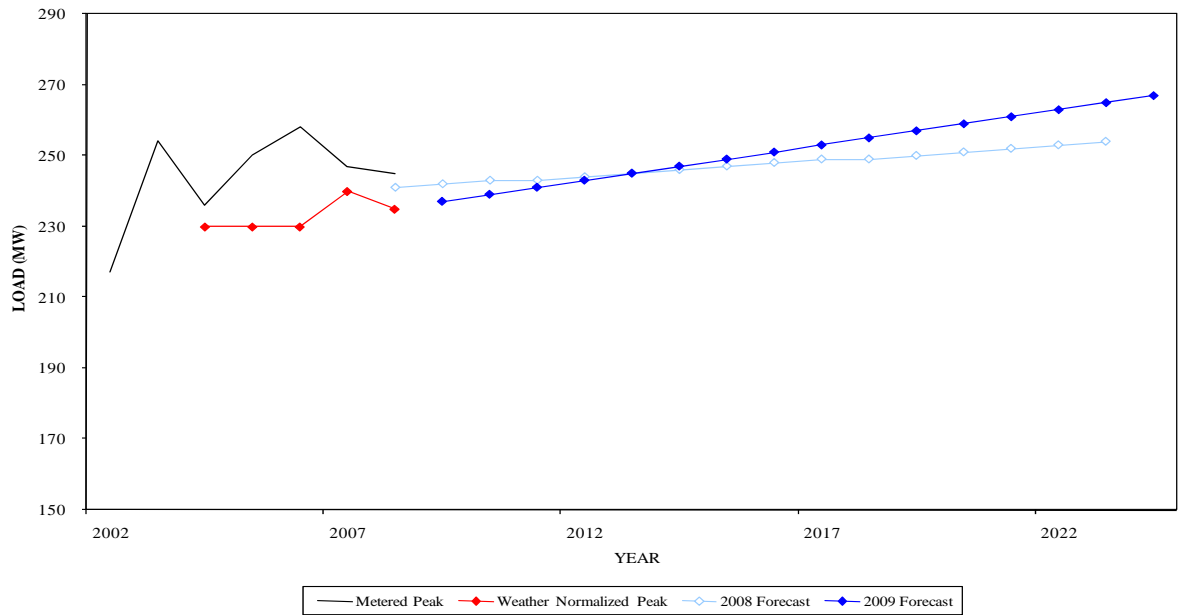
**WINTER PEAK DEMAND FOR PS
GEOGRAPHIC ZONE**



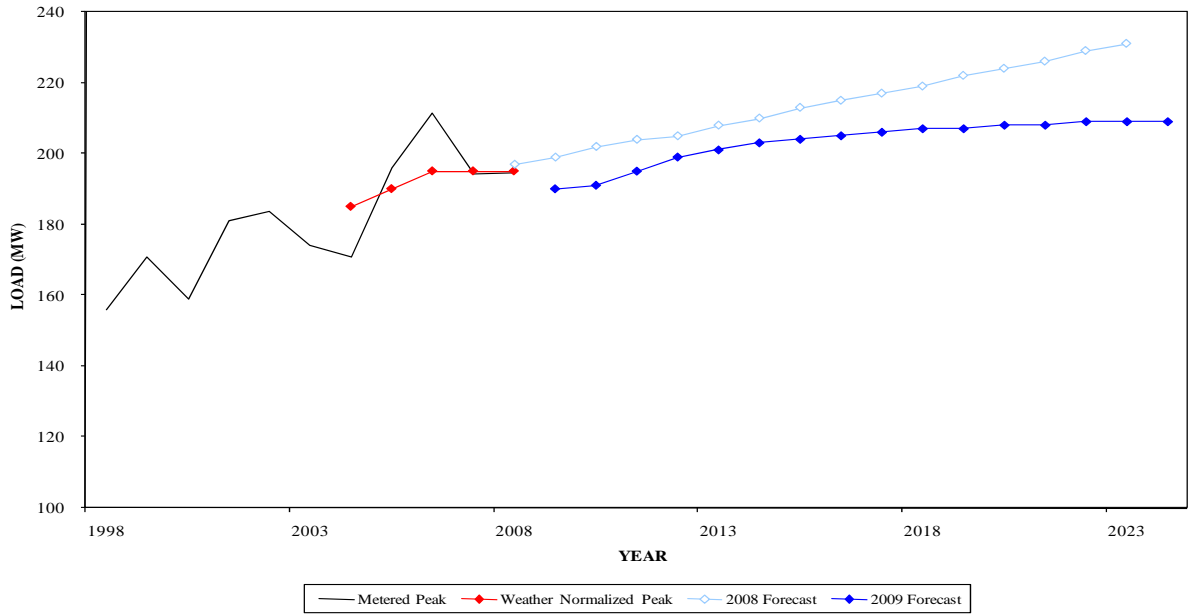
**SUMMER PEAK DEMAND FOR RECO
GEOGRAPHIC ZONE**



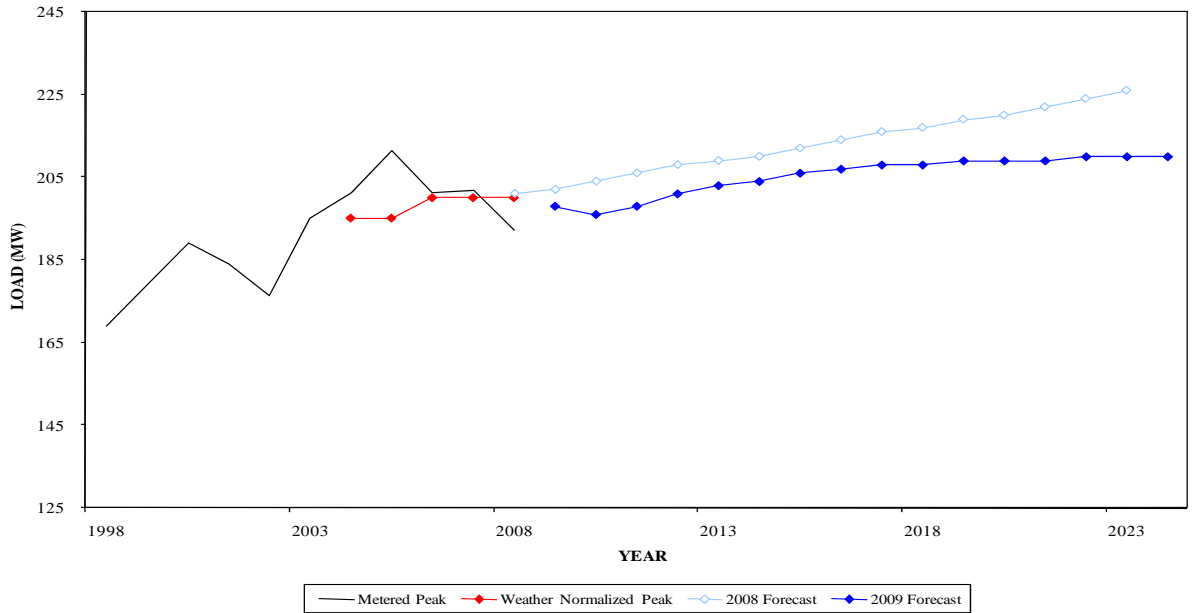
**WINTER PEAK DEMAND FOR RECO
GEOGRAPHIC ZONE**



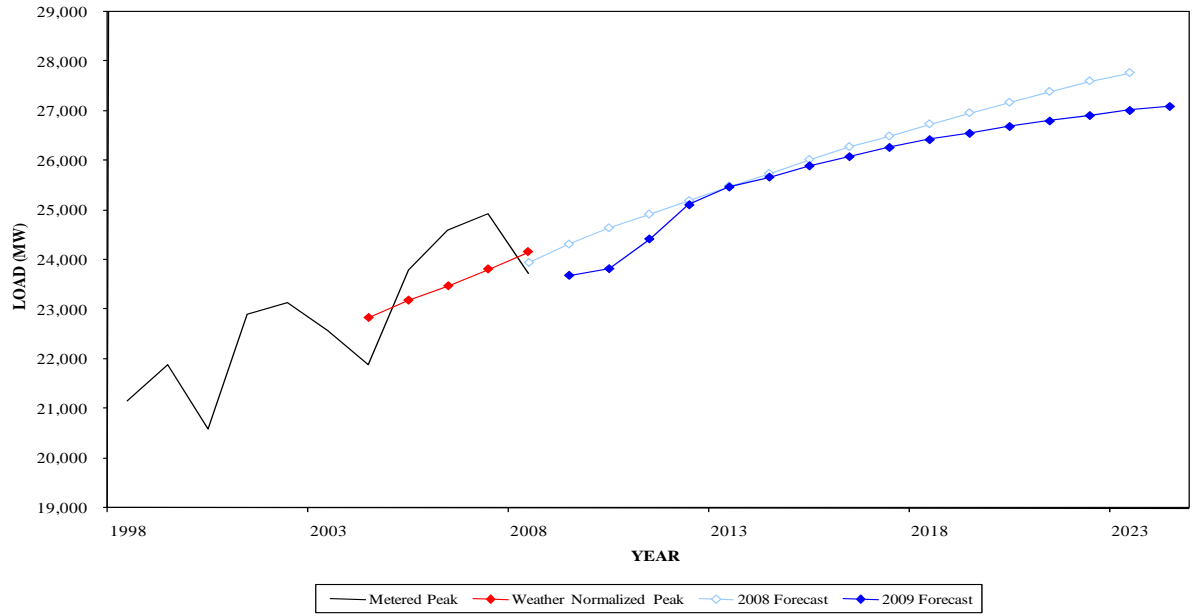
**SUMMER PEAK DEMAND FOR UGI
GEOGRAPHIC ZONE**



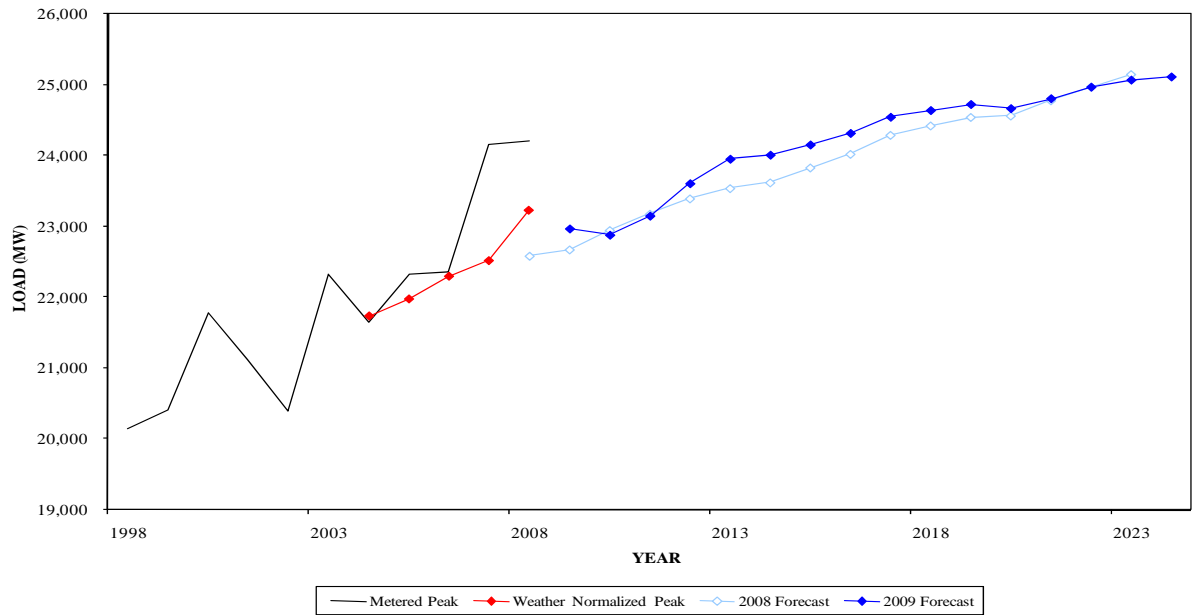
**WINTER PEAK DEMAND FOR UGI
GEOGRAPHIC ZONE**



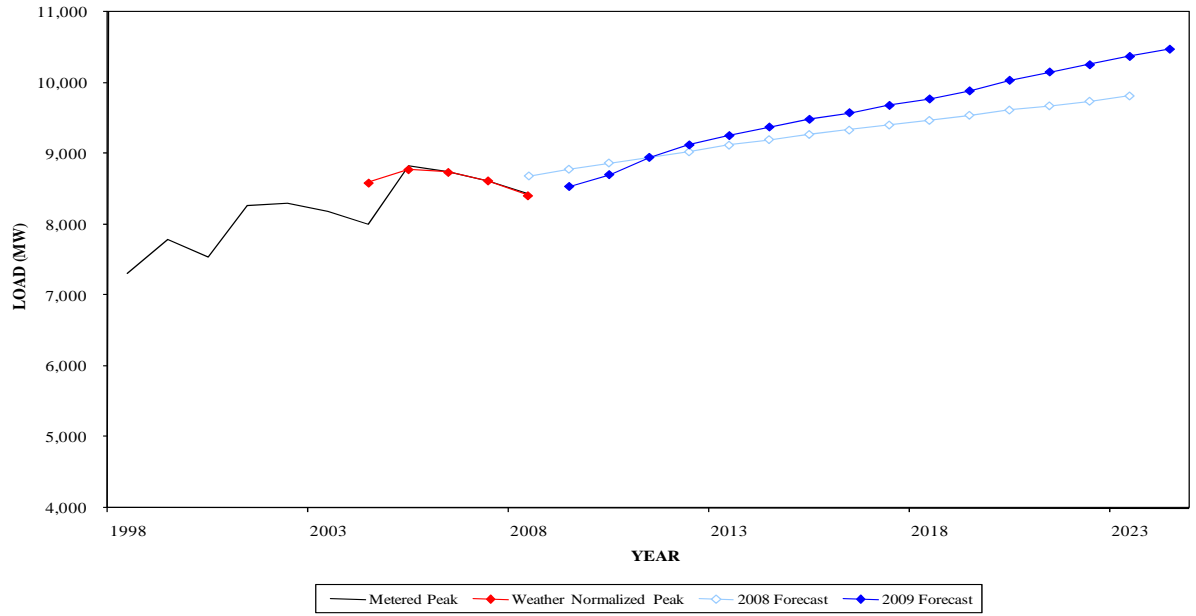
**SUMMER PEAK DEMAND FOR AEP
GEOGRAPHIC ZONE**



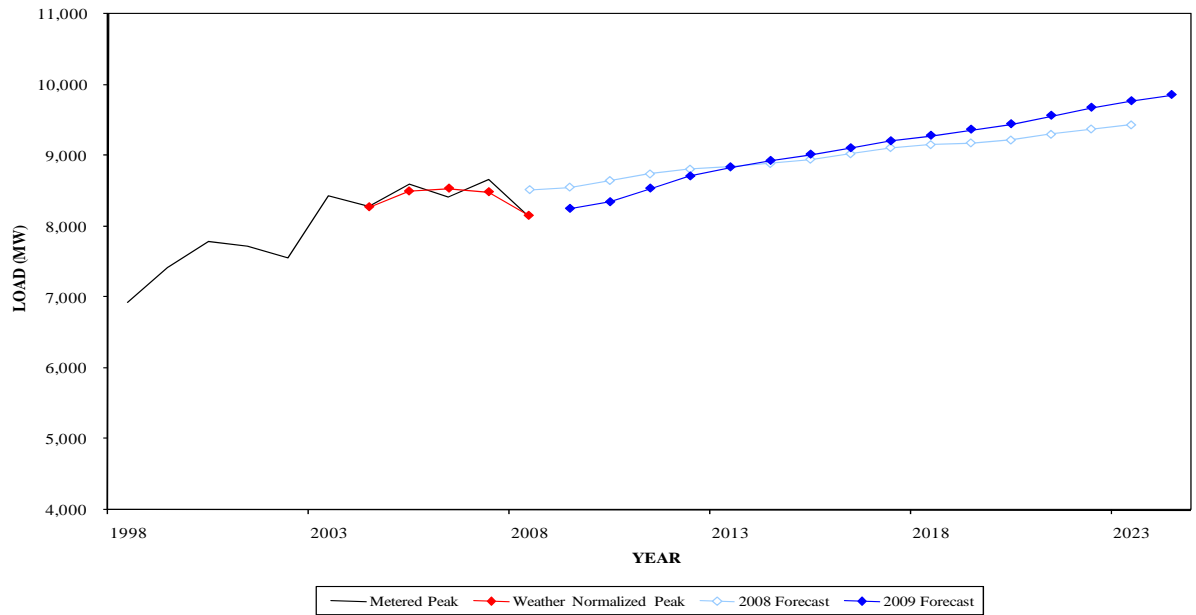
**WINTER PEAK DEMAND FOR AEP
GEOGRAPHIC ZONE**



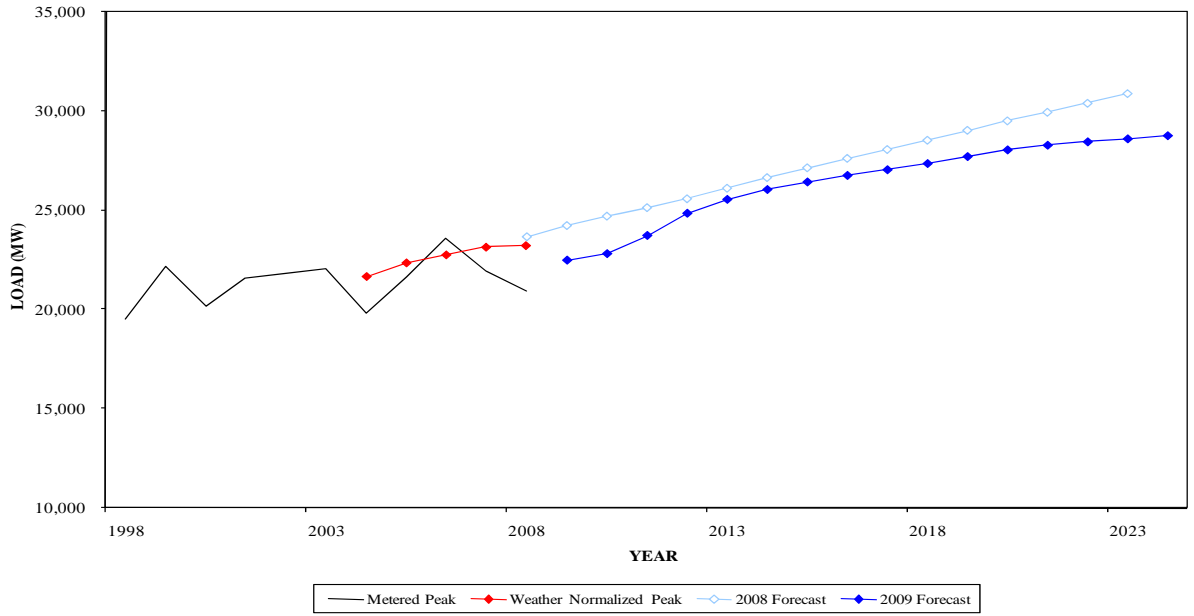
**SUMMER PEAK DEMAND FOR APS
GEOGRAPHIC ZONE**



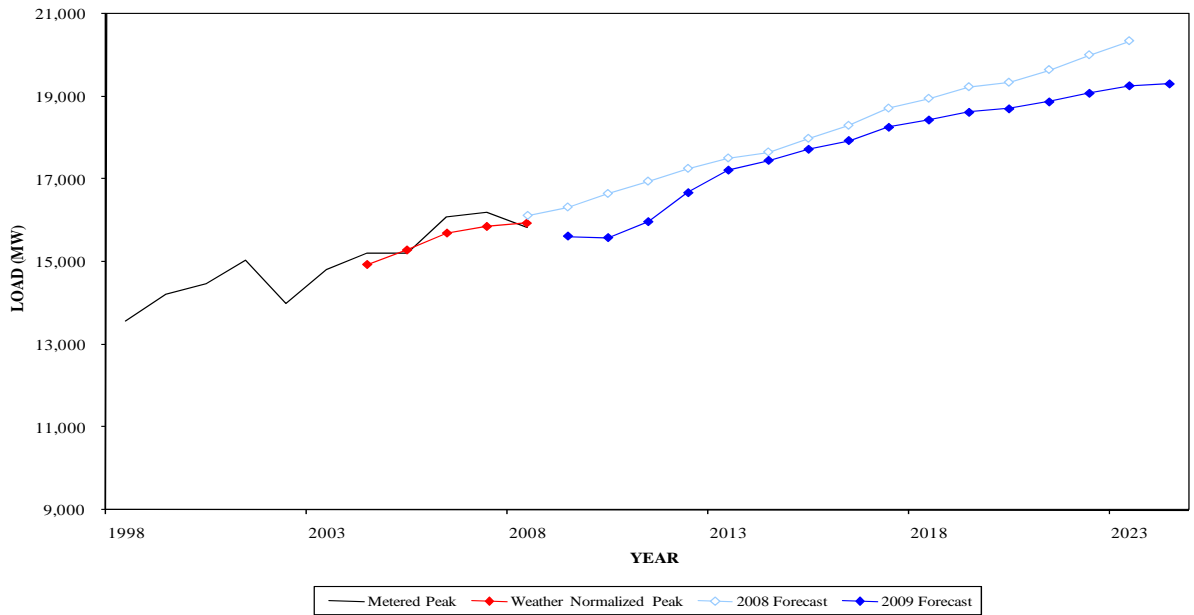
**WINTER PEAK DEMAND FOR APS
GEOGRAPHIC ZONE**



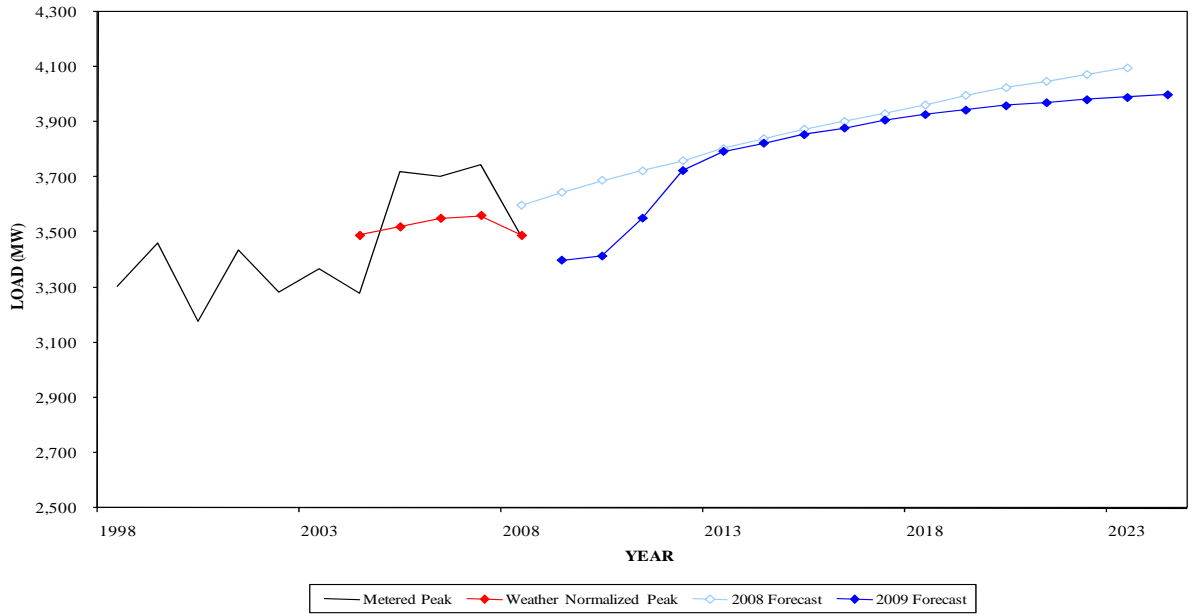
**SUMMER PEAK DEMAND FOR COMED
GEOGRAPHIC ZONE**



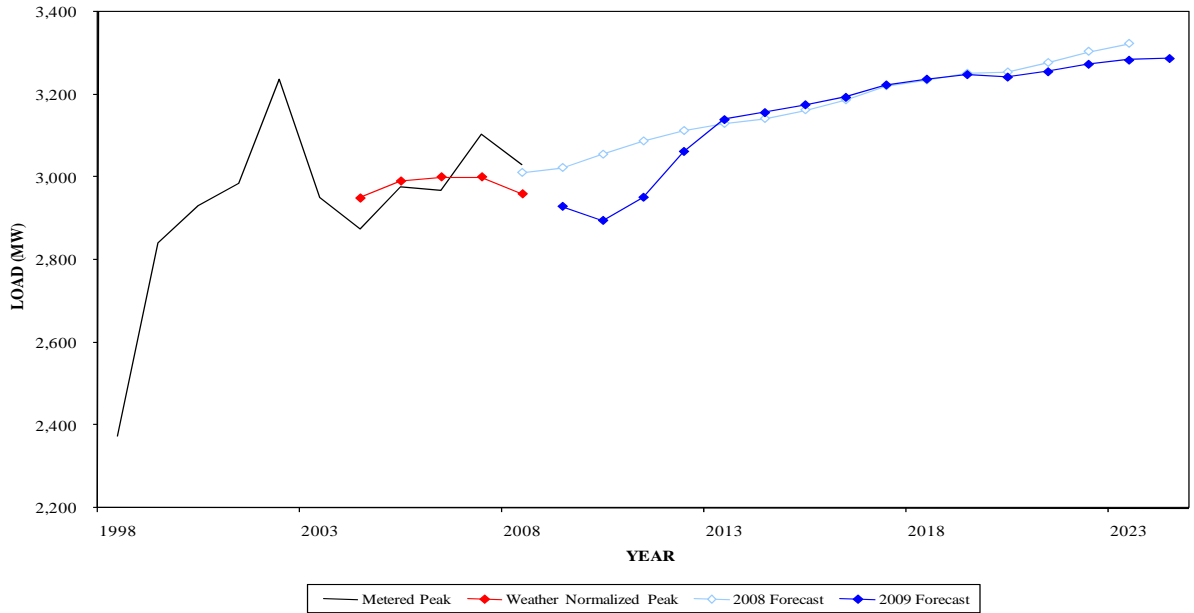
**WINTER PEAK DEMAND FOR COMED
GEOGRAPHIC ZONE**



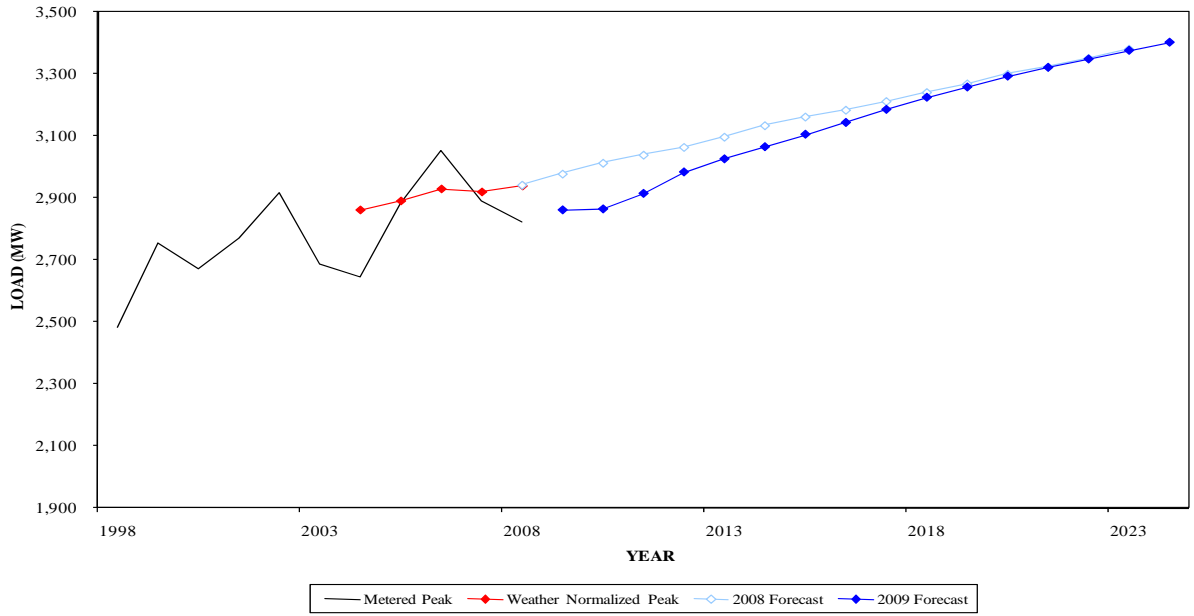
**SUMMER PEAK DEMAND FOR DAY
GEOGRAPHIC ZONE**



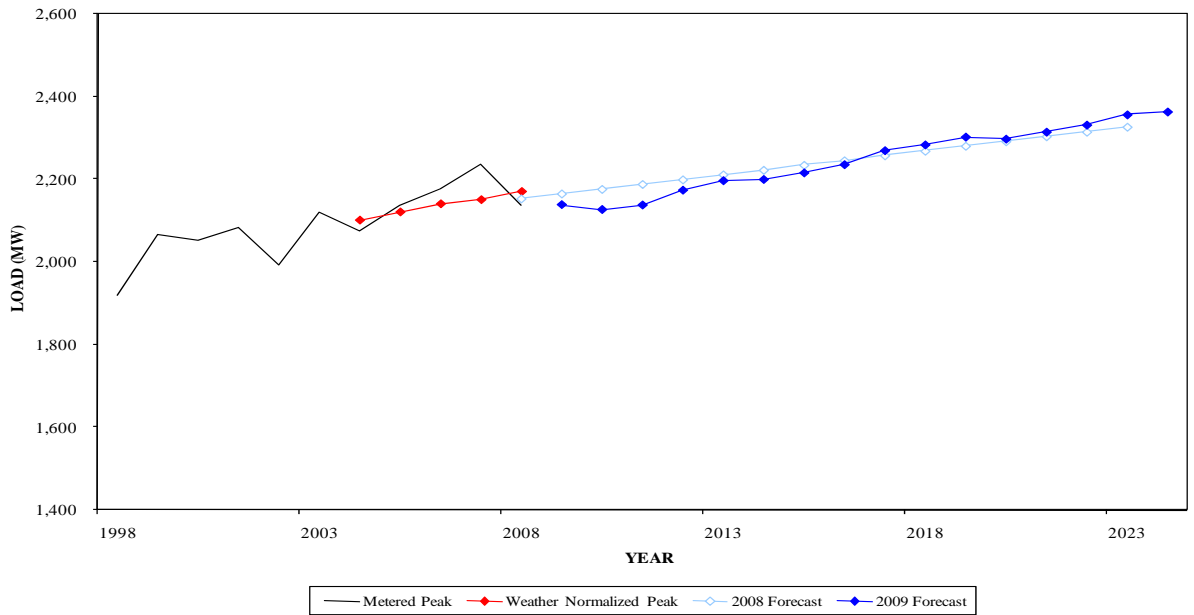
**WINTER PEAK DEMAND FOR DAY
GEOGRAPHIC ZONE**



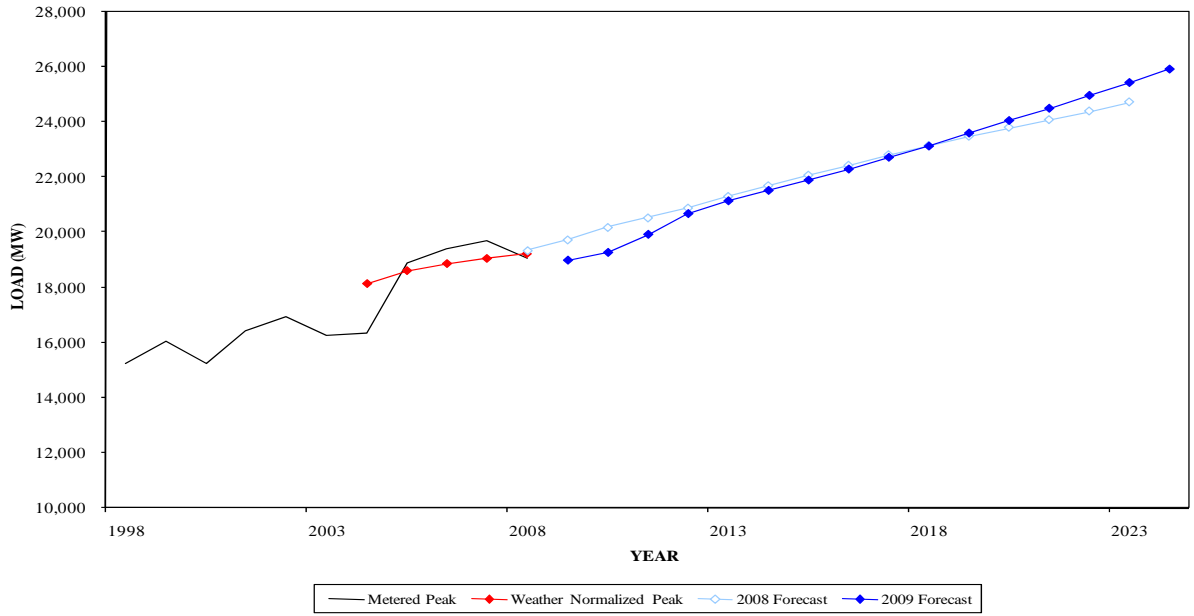
**SUMMER PEAK DEMAND FOR DLCO
GEOGRAPHIC ZONE**



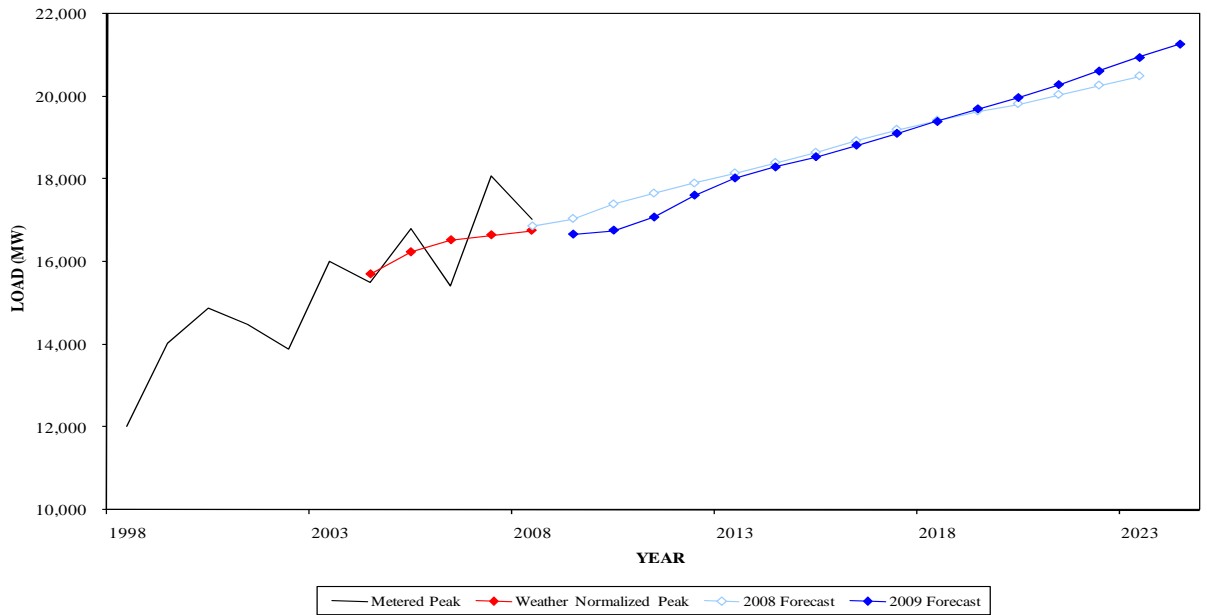
**WINTER PEAK DEMAND FOR DLCO
GEOGRAPHIC ZONE**



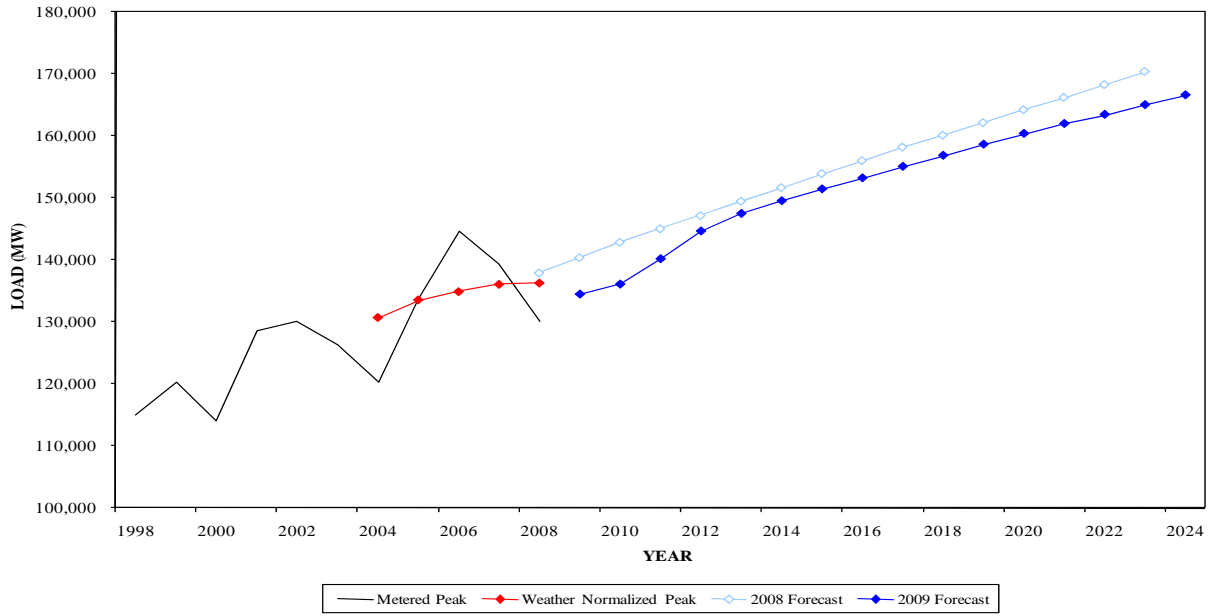
**SUMMER PEAK DEMAND FOR DOM
GEOGRAPHIC ZONE**



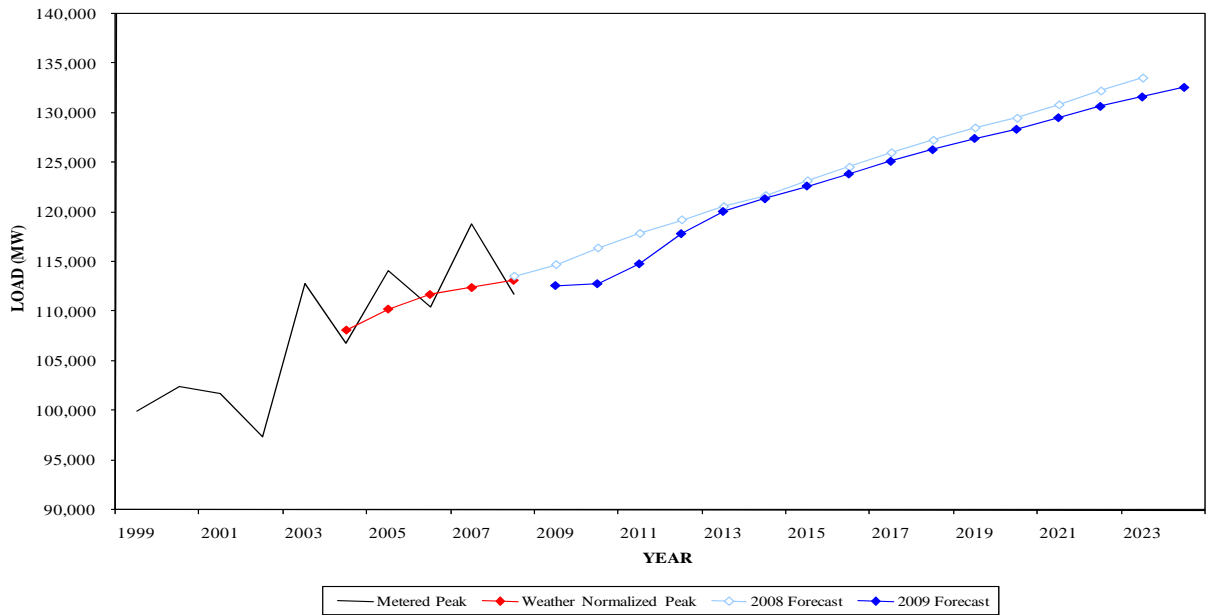
**WINTER PEAK DEMAND FOR DOM
GEOGRAPHIC ZONE**



SUMMER PEAK DEMAND FOR PJM RTO



WINTER PEAK DEMAND FOR PJM RTO



THIS PAGE INTENTIONALLY LEFT BLANK

Table A-1

**PJM MID-ATLANTIC REGION
SUMMER PEAK LOAD COMPARISONS OF THE CURRENT FORECAST
TO THE JANUARY 2008 LOAD FORECAST REPORT**

INCREASE OR DECREASE OVER PRIOR FORECAST

	2009		2014		2019	
	MW	%	MW	%	MW	%
AE	(205)	-7.1%	(139)	-4.0%	(200)	-5.4%
BGE	(152)	-2.0%	164	2.1%	541	6.6%
DPL	(306)	-7.2%	(216)	-4.6%	(268)	-5.2%
JCPL	(279)	-4.2%	(173)	-2.4%	(414)	-5.2%
METED	(116)	-3.9%	(52)	-1.6%	(156)	-4.5%
PECO	(454)	-5.1%	(474)	-4.9%	(675)	-6.6%
PENLC	(106)	-3.7%	(7)	-0.2%	120	3.8%
PEPCO	(199)	-2.8%	(208)	-2.7%	(333)	-4.1%
PL	(314)	-4.2%	(268)	-3.4%	(521)	-6.1%
PS	(300)	-2.7%	(105)	-0.9%	(322)	-2.5%
RECO	(6)	-1.4%	5	1.1%	5	1.0%
UGI	(9)	-4.5%	(7)	-3.3%	(15)	-6.8%
PJM MID-ATLANTIC	(2,201)	-3.6%	(1,237)	-1.9%	(1,966)	-2.8%
FE/GPU	(469)	-3.8%	(159)	-1.2%	(363)	-2.5%
PLGRP	(350)	-4.6%	(306)	-3.8%	(568)	-6.5%

Table A-1

**PJM WESTERN REGION, PJM SOUTHERN REGION AND PJM RTO
SUMMER PEAK LOAD COMPARISONS OF THE CURRENT FORECAST
TO THE JANUARY 2008 LOAD FORECAST REPORT**

INCREASE OR DECREASE OVER PRIOR FORECAST

	2009		2014		2019	
	MW	%	MW	%	MW	%
AEP	(629)	-2.6%	(68)	-0.3%	(407)	-1.5%
APS	(245)	-2.8%	175	1.9%	341	3.6%
COMED	(1,747)	-7.2%	(587)	-2.2%	(1,303)	-4.5%
DAY	(245)	-6.7%	(14)	-0.4%	(52)	-1.3%
DLCO	(116)	-3.9%	(69)	-2.2%	(12)	-0.4%
PJM WESTERN	(2,796)	-4.5%	(589)	-0.9%	(1,441)	-2.0%
DOM	(761)	-3.9%	(186)	-0.9%	114	0.5%
PJM RTO	(5,979)	-4.3%	(2,178)	-1.4%	(3,515)	-2.2%

Table A-2

**PJM MID-ATLANTIC REGION
WINTER PEAK LOAD COMPARISONS OF THE CURRENT FORECAST
TO THE JANUARY 2008 LOAD FORECAST REPORT**

INCREASE OR DECREASE OVER PRIOR FORECAST

	08/09		13/14		18/19	
	MW	%	MW	%	MW	%
AE	(81)	-4.3%	(42)	-1.9%	(69)	-2.9%
BGE	(61)	-1.0%	38	0.6%	205	3.2%
DPL	(135)	-3.9%	(103)	-2.8%	(133)	-3.4%
JCPL	(88)	-2.2%	(18)	-0.4%	(117)	-2.5%
METED	(36)	-1.4%	4	0.1%	(44)	-1.5%
PECO	(156)	-2.3%	(246)	-3.5%	(362)	-4.8%
PENLC	(45)	-1.6%	20	0.7%	143	4.6%
PEPCO	(12)	-0.2%	19	0.3%	(19)	-0.3%
PL	(99)	-1.4%	(116)	-1.5%	(249)	-3.1%
PS	(138)	-1.9%	(65)	-0.9%	(192)	-2.4%
RECO	(5)	-2.1%	1	0.4%	7	2.8%
UGI	(4)	-2.0%	(6)	-2.9%	(10)	-4.6%
PJM MID-ATLANTIC	(657)	-1.4%	(216)	-0.4%	(536)	-1.0%
FE/GPU	(179)	-1.9%	14	0.1%	2	0.0%
PLGRP	(123)	-1.6%	(138)	-1.8%	(289)	-3.5%

Table A-2

**PJM WESTERN REGION, PJM SOUTHERN REGION AND PJM RTO
WINTER PEAK LOAD COMPARISONS OF THE CURRENT FORECAST
TO THE JANUARY 2008 LOAD FORECAST REPORT**

INCREASE OR DECREASE OVER PRIOR FORECAST

	08/09		13/14		18/19	
	MW	%	MW	%	MW	%
AEP	297	1.3%	394	1.7%	189	0.8%
APS	(300)	-3.5%	42	0.5%	191	2.1%
COMED	(714)	-4.4%	(204)	-1.2%	(610)	-3.2%
DAY	(94)	-3.1%	15	0.5%	(2)	-0.1%
DLCO	(27)	-1.2%	(23)	-1.0%	22	1.0%
PJM WESTERN	(692)	-1.3%	481	0.9%	32	0.1%
DOM	(366)	-2.1%	(97)	-0.5%	65	0.3%
PJM RTO	(2,165)	-1.9%	(341)	-0.3%	(1,057)	-0.8%

**PJM CONTROL AREA - JANUARY 2009
UNRESTRICTED PEAK FORECAST: SUMMER/WINTER
2009-2019**

SUMMER UNRESTRICTED PEAK (MW)

		2009	2010	2011	2012	2013	2014	2015	2016	2017	2018	2019	Annual Growth Rate (10 yr)
PJM MID-ATLANTIC		59,621	60,341	62,027	63,556	64,706	65,581	66,403	67,197	67,969	68,717	69,512	1.5%
	%		1.2%	2.8%	2.5%	1.8%	1.4%	1.3%	1.2%	1.1%	1.1%	1.2%	
PJM WESTERN		59,701	60,280	62,141	64,318	65,598	66,421	67,182	67,876	68,500	69,079	69,721	1.6%
	%		1.0%	3.1%	3.5%	2.0%	1.3%	1.1%	1.0%	0.9%	0.8%	0.9%	
PJM SOUTHERN		18,982	19,264	19,921	20,675	21,140	21,518	21,895	22,294	22,721	23,130	23,603	2.2%
	%		1.5%	3.4%	3.8%	2.2%	1.8%	1.8%	1.8%	1.9%	1.8%	2.0%	
PJM RTO		134,428	136,038	140,132	144,613	147,442	149,497	151,410	153,189	155,042	156,822	158,617	1.7%
	%		1.2%	3.0%	3.2%	2.0%	1.4%	1.3%	1.2%	1.2%	1.1%	1.1%	

WINTER UNRESTRICTED PEAK (MW)

		08/09	09/10	10/11	11/12	12/13	13/14	14/15	15/16	16/17	17/18	18/19	Annual Growth Rate (10 yr)
PJM MID-ATLANTIC		46,444	46,522	47,343	48,465	49,236	49,807	50,335	50,834	51,376	51,852	52,299	1.2%
	%		0.2%	1.8%	2.4%	1.6%	1.2%	1.1%	1.0%	1.1%	0.9%	0.9%	
PJM WESTERN		50,819	50,814	51,743	53,212	54,207	54,721	55,195	55,661	56,243	56,633	56,939	1.1%
	%		0.0%	1.8%	2.8%	1.9%	0.9%	0.9%	0.8%	1.0%	0.7%	0.5%	
PJM SOUTHERN		16,677	16,773	17,089	17,621	18,037	18,302	18,551	18,831	19,117	19,403	19,710	1.7%
	%		0.6%	1.9%	3.1%	2.4%	1.5%	1.4%	1.5%	1.5%	1.5%	1.6%	
PJM RTO		112,563	112,750	114,762	117,809	120,056	121,344	122,628	123,847	125,124	126,300	127,440	1.2%
	%		0.2%	1.8%	2.7%	1.9%	1.1%	1.1%	1.0%	1.0%	0.9%	0.9%	

Notes:

Projected PJM seasonal peak load at normal peak weather conditions in the absence of any load reductions due to load management, voltage reductions or voluntary curtailments. The above forecasts incorporate all load in the PJM Control Area, including members and non-members.

**PJM CONTROL AREA - JANUARY 2009
UNRESTRICTED PEAK FORECAST: SUMMER/WINTER
2020-2024**

SUMMER UNRESTRICTED PEAK (MW)

		2020	2021	2022	2023	2024	Annual Growth Rate (15 yr)
PJM MID-ATLANTIC		70,342	71,036	71,723	72,267	72,986	1.4%
	%	1.2%	1.0%	1.0%	0.8%	1.0%	
PJM WESTERN		70,324	70,843	71,261	71,618	72,013	1.3%
	%	0.9%	0.7%	0.6%	0.5%	0.6%	
PJM SOUTHERN		24,059	24,506	24,974	25,440	25,929	2.1%
	%	1.9%	1.9%	1.9%	1.9%	1.9%	
PJM RTO		160,357	161,954	163,433	165,006	166,581	1.4%
	%	1.1%	1.0%	0.9%	1.0%	1.0%	

WINTER UNRESTRICTED PEAK (MW)

		19/20	20/21	21/22	22/23	23/24	Annual Growth Rate (15 yr)
PJM MID-ATLANTIC		52,712	53,156	53,621	54,015	54,412	1.1%
	%	0.8%	0.8%	0.9%	0.7%	0.7%	
PJM WESTERN		57,252	57,608	58,021	58,332	58,566	1.0%
	%	0.5%	0.6%	0.7%	0.5%	0.4%	
PJM SOUTHERN		19,983	20,297	20,626	20,952	21,276	1.6%
	%	1.4%	1.6%	1.6%	1.6%	1.5%	
PJM RTO		128,358	129,537	130,679	131,639	132,599	1.1%
	%	0.7%	0.9%	0.9%	0.7%	0.7%	

Notes:

Projected PJM seasonal peak load at normal peak weather conditions in the absence of any load reductions due to load management, voltage reductions or voluntary curtailments. The above forecasts incorporate all load in the PJM Control Area, including members and non-members.

Table B-1

**SUMMER PEAK LOAD (MW) AND GROWTH RATES FOR
EACH PJM MID-ATLANTIC ZONE AND GEOGRAPHIC REGION
2009-2019**

	METERED 2008	UNRESTRICTED 2008	NORMAL 2008	2009	2010	2011	2012	2013	2014	2015	2016	2017	2018	2019	Annual Growth Rate (10 yr)
AE	2,638	2,638	2,750	2,692	2,761	2,980	3,120	3,240	3,301	3,351	3,402	3,448	3,494	3,533	2.8%
%				-2.1%	2.6%	7.9%	4.7%	3.8%	1.9%	1.5%	1.5%	1.4%	1.3%	1.1%	
BGE	6,929	7,150	7,270	7,303	7,446	7,668	7,764	7,887	8,022	8,176	8,304	8,447	8,586	8,745	1.8%
%				0.5%	2.0%	3.0%	1.3%	1.6%	1.7%	1.9%	1.6%	1.7%	1.6%	1.9%	
DPL	3,985	4,009	4,010	3,972	4,002	4,138	4,289	4,395	4,483	4,554	4,630	4,712	4,789	4,882	2.1%
%				-0.9%	0.8%	3.4%	3.6%	2.5%	2.0%	1.6%	1.7%	1.8%	1.6%	1.9%	
JCPL	6,299	6,398	6,380	6,357	6,504	6,717	6,931	7,073	7,173	7,269	7,364	7,457	7,541	7,621	1.8%
%				-0.4%	2.3%	3.3%	3.2%	2.0%	1.4%	1.3%	1.3%	1.3%	1.1%	1.1%	
METED	3,045	3,110	2,880	2,866	2,906	2,995	3,079	3,142	3,182	3,219	3,253	3,284	3,305	3,334	1.5%
%				-0.5%	1.4%	3.1%	2.8%	2.0%	1.3%	1.2%	1.1%	1.0%	0.6%	0.9%	
PECO	8,824	8,837	8,690	8,455	8,459	8,681	8,893	9,008	9,103	9,212	9,307	9,386	9,467	9,538	1.2%
%				-2.7%	0.0%	2.6%	2.4%	1.3%	1.1%	1.2%	1.0%	0.8%	0.9%	0.7%	
PENLC	2,880	2,880	2,840	2,786	2,806	2,877	2,949	3,001	3,047	3,098	3,152	3,205	3,252	3,305	1.7%
%				-1.9%	0.7%	2.5%	2.5%	1.8%	1.5%	1.7%	1.7%	1.7%	1.5%	1.6%	
PEPCO	6,751	6,752	6,930	6,960	7,026	7,141	7,252	7,358	7,437	7,512	7,578	7,657	7,736	7,823	1.2%
%				0.4%	0.9%	1.6%	1.6%	1.5%	1.1%	1.0%	0.9%	1.0%	1.0%	1.1%	
PL	7,316	7,370	7,200	7,106	7,155	7,319	7,494	7,613	7,683	7,757	7,816	7,878	7,932	7,985	1.2%
%				-1.3%	0.7%	2.3%	2.4%	1.6%	0.9%	1.0%	0.8%	0.8%	0.7%	0.7%	
PS	10,654	10,716	10,850	10,858	11,022	11,292	11,570	11,753	11,885	12,013	12,135	12,257	12,354	12,470	1.4%
%				0.1%	1.5%	2.4%	2.5%	1.6%	1.1%	1.1%	1.0%	1.0%	0.8%	0.9%	
RECO	440	440	430	435	441	451	461	467	472	477	482	487	491	496	1.3%
%				1.2%	1.4%	2.3%	2.2%	1.3%	1.1%	1.1%	1.0%	1.0%	0.8%	1.0%	
UGI	195	195	195	190	191	195	199	201	203	204	205	206	207	207	0.9%
%				-2.6%	0.5%	2.1%	2.1%	1.0%	1.0%	0.5%	0.5%	0.5%	0.5%	0.0%	
DIVERSITY (-)				359	378	427	445	432	410	439	431	455	437	427	
PJM MID-ATLANTIC	59,653	60,192	60,120	59,621	60,341	62,027	63,556	64,706	65,581	66,403	67,197	67,969	68,717	69,512	1.5%
%				-0.8%	1.2%	2.8%	2.5%	1.8%	1.4%	1.3%	1.2%	1.1%	1.1%	1.2%	
FE/GPU	12,028	12,136	11,970	11,866	12,052	12,421	12,803	13,082	13,284	13,458	13,632	13,806	13,972	14,141	1.8%
%				1.5%	1.6%	3.1%	3.1%	2.2%	1.5%	1.3%	1.3%	1.3%	1.2%	1.2%	
PLGRP	7,510	7,564	7,360	7,266	7,305	7,471	7,649	7,773	7,851	7,923	7,987	8,043	8,100	8,156	1.2%
%				1.3%	0.5%	2.3%	2.4%	1.6%	1.0%	0.9%	0.8%	0.7%	0.7%	0.7%	

Note:

Normal 2008 and all forecast values are non-coincident as estimated by PJM staff.

Normal 2008 and all forecast values represent unrestricted peaks.

Table B-1 (Continued)

**SUMMER PEAK LOAD (MW) AND GROWTH RATES FOR
EACH PJM MID-ATLANTIC ZONE AND GEOGRAPHIC REGION
2020-2024**

		2020	2021	2022	2023	2024	Annual Growth Rate (15 yr)
AE		3,572	3,617	3,658	3,687	3,722	2.2%
	%	1.1%	1.3%	1.1%	0.8%	0.9%	
BGE		8,913	9,050	9,184	9,323	9,483	1.8%
	%	1.9%	1.5%	1.5%	1.5%	1.7%	
DPL		4,969	5,059	5,142	5,232	5,317	2.0%
	%	1.8%	1.8%	1.6%	1.8%	1.6%	
JCPL		7,691	7,763	7,841	7,912	7,983	1.5%
	%	0.9%	0.9%	1.0%	0.9%	0.9%	
METED		3,364	3,384	3,407	3,424	3,442	1.2%
	%	0.9%	0.6%	0.7%	0.5%	0.5%	
PECO		9,616	9,678	9,728	9,765	9,806	1.0%
	%	0.8%	0.6%	0.5%	0.4%	0.4%	
PENLC		3,355	3,401	3,445	3,489	3,529	1.6%
	%	1.5%	1.4%	1.3%	1.3%	1.1%	
PEPCO		7,911	7,987	8,063	8,140	8,217	1.1%
	%	1.1%	1.0%	1.0%	1.0%	0.9%	
PL		8,032	8,066	8,108	8,134	8,170	0.9%
	%	0.6%	0.4%	0.5%	0.3%	0.4%	
PS		12,572	12,677	12,763	12,859	12,951	1.2%
	%	0.8%	0.8%	0.7%	0.8%	0.7%	
RECO		501	505	509	512	516	1.1%
	%	1.0%	0.8%	0.8%	0.6%	0.8%	
UGI		208	208	209	209	209	0.6%
	%	0.5%	0.0%	0.5%	0.0%	0.0%	
DIVERSITY (-)		362	359	334	419	359	
PJM MID-ATLANTIC		70,342	71,036	71,723	72,267	72,986	1.4%
	%	1.2%	1.0%	1.0%	0.8%	1.0%	
FE/GPU		14,285	14,422	14,564	14,691	14,844	1.5%
	%	1.0%	1.0%	1.0%	0.9%	1.0%	
PLGRP		8,199	8,235	8,278	8,302	8,346	0.9%
	%	0.5%	0.4%	0.5%	0.3%	0.5%	

Table B-1
SUMMER PEAK LOAD (MW) AND GROWTH RATES FOR
EACH PJM WESTERN AND PJM SOUTHERN ZONE, GEOGRAPHIC REGIONS AND RTO
2009-2019

	METERED	UNRESTRICTED	NORMAL												Annual
	2008	2008	2008	2009	2010	2011	2012	2013	2014	2015	2016	2017	2018	2019	Growth
															Rate (10 yr)
AEP	23,730	23,834	24,160	23,682	23,817	24,419	25,109	25,469	25,669	25,897	26,082	26,268	26,426	26,554	1.2%
%				-2.0%	0.6%	2.5%	2.8%	1.4%	0.8%	0.9%	0.7%	0.7%	0.6%	0.5%	
APS	8,428	8,432	8,410	8,538	8,705	8,949	9,125	9,257	9,378	9,487	9,580	9,683	9,775	9,889	1.5%
%				1.5%	2.0%	2.8%	2.0%	1.4%	1.3%	1.2%	1.0%	1.1%	1.0%	1.2%	
COMED	20,948	20,976	23,230	22,472	22,803	23,725	24,848	25,552	26,052	26,434	26,766	27,053	27,366	27,722	2.1%
%				-3.3%	1.5%	4.0%	4.7%	2.8%	2.0%	1.5%	1.3%	1.1%	1.2%	1.3%	
DAY	3,488	3,493	3,490	3,399	3,414	3,552	3,725	3,795	3,825	3,856	3,880	3,909	3,929	3,945	1.5%
%				-2.6%	0.4%	4.0%	4.9%	1.9%	0.8%	0.8%	0.6%	0.7%	0.5%	0.4%	
DLCO	2,822	2,822	2,940	2,862	2,865	2,915	2,984	3,026	3,065	3,105	3,143	3,185	3,224	3,257	1.3%
%				-2.7%	0.1%	1.7%	2.4%	1.4%	1.3%	1.3%	1.2%	1.3%	1.2%	1.0%	
DIVERSITY (-)				1,252	1,324	1,419	1,473	1,501	1,568	1,597	1,575	1,598	1,641	1,646	
PJM WESTERN	57,881	58,027	60,940	59,701	60,280	62,141	64,318	65,598	66,421	67,182	67,876	68,500	69,079	69,721	1.6%
%				-2.0%	1.0%	3.1%	3.5%	2.0%	1.3%	1.1%	1.0%	0.9%	0.8%	0.9%	
DOM	19,051	19,060	19,230	18,982	19,264	19,921	20,675	21,140	21,518	21,895	22,294	22,721	23,130	23,603	2.2%
%				-1.3%	1.5%	3.4%	3.8%	2.2%	1.8%	1.8%	1.8%	1.9%	1.8%	2.0%	
DIVERSITY (-)				3,876	3,847	3,957	3,936	4,002	4,023	4,070	4,178	4,148	4,104	4,219	
PJM RTO	130,100	130,792	136,315	134,428	136,038	140,132	144,613	147,442	149,497	151,410	153,189	155,042	156,822	158,617	1.7%
%				-1.4%	1.2%	3.0%	3.2%	2.0%	1.4%	1.3%	1.2%	1.2%	1.1%	1.1%	

Note:
Normal 2008 and all forecast values are non-coincident as estimated by PJM staff.
Normal 2008 and all forecast values represent unrestricted peaks.

Table B-1 (Continued)

**SUMMER PEAK LOAD (MW) AND GROWTH RATES FOR
EACH PJM WESTERN AND PJM SOUTHERN ZONE, GEOGRAPHIC REGIONS AND RTO
2020-2024**

		2020	2021	2022	2023	2024	Annual Growth Rate (15 yr)
AEP		26,692	26,804	26,914	27,016	27,097	0.9%
	%	0.5%	0.4%	0.4%	0.4%	0.3%	
APS		10,038	10,156	10,258	10,375	10,478	1.4%
	%	1.5%	1.2%	1.0%	1.1%	1.0%	
COMED		28,058	28,294	28,468	28,619	28,777	1.7%
	%	1.2%	0.8%	0.6%	0.5%	0.6%	
DAY		3,961	3,972	3,983	3,991	4,001	1.1%
	%	0.4%	0.3%	0.3%	0.2%	0.3%	
DLCO		3,292	3,320	3,347	3,375	3,401	1.2%
	%	1.1%	0.9%	0.8%	0.8%	0.8%	
DIVERSITY (-)		1,717	1,703	1,709	1,758	1,741	
PJM WESTERN		70,324	70,843	71,261	71,618	72,013	1.3%
	%	0.9%	0.7%	0.6%	0.5%	0.6%	
DOM		24,059	24,506	24,974	25,440	25,929	2.1%
	%	1.9%	1.9%	1.9%	1.9%	1.9%	
DIVERSITY (-)		4,368	4,431	4,525	4,319	4,347	
PJM RTO		160,357	161,954	163,433	165,006	166,581	1.4%
	%	1.1%	1.0%	0.9%	1.0%	1.0%	

Note:

Normal 2008 and all forecast values are non-coincident as estimated by PJM staff.

Normal 2008 and all forecast values represent unrestricted peaks.

Table B-2

WINTER PEAK LOAD (MW) AND GROWTH RATES FOR
EACH PJM MID-ATLANTIC ZONE AND GEOGRAPHIC REGION
2008/09-2018/19

	METERED 07/08	UNRESTRICTED 07/08	NORMAL 07/08	08/09	09/10	10/11	11/12	12/13	13/14	14/15	15/16	16/17	17/18	18/19	Annual Growth Rate (10 yr)
AE	1,743	1,743	1,810	1,799	1,805	1,865	2,002	2,076	2,130	2,163	2,190	2,225	2,251	2,280	2.4%
%				-0.6%	0.3%	3.3%	7.3%	3.7%	2.6%	1.5%	1.2%	1.6%	1.2%	1.3%	
BGE	5,690	5,690	5,920	5,986	6,017	6,118	6,191	6,238	6,292	6,357	6,427	6,501	6,572	6,637	1.0%
%				1.1%	0.5%	1.7%	1.2%	0.8%	0.9%	1.0%	1.1%	1.2%	1.1%	1.0%	
DPL	3,232	3,232	3,310	3,307	3,301	3,356	3,448	3,529	3,582	3,631	3,673	3,724	3,775	3,825	1.5%
%				-0.1%	-0.2%	1.7%	2.7%	2.3%	1.5%	1.4%	1.2%	1.4%	1.4%	1.3%	
JCPL	4,057	4,057	4,000	3,978	4,027	4,117	4,239	4,340	4,386	4,445	4,498	4,558	4,602	4,645	1.6%
%				-0.5%	1.2%	2.2%	3.0%	2.4%	1.1%	1.3%	1.2%	1.3%	1.0%	0.9%	
METED	2,611	2,611	2,550	2,560	2,555	2,610	2,680	2,737	2,771	2,795	2,819	2,852	2,875	2,898	1.2%
%				0.4%	-0.2%	2.2%	2.7%	2.1%	1.2%	0.9%	0.9%	1.2%	0.8%	0.8%	
PECO	6,519	6,519	6,610	6,526	6,438	6,531	6,685	6,793	6,858	6,916	6,982	7,056	7,112	7,167	0.9%
%				-1.3%	-1.3%	1.4%	2.4%	1.6%	1.0%	0.8%	1.0%	1.1%	0.8%	0.8%	
PENLC	2,837	2,837	2,810	2,790	2,775	2,824	2,905	2,964	3,007	3,053	3,103	3,166	3,218	3,269	1.6%
%				-0.7%	-0.5%	1.8%	2.9%	2.0%	1.5%	1.5%	1.6%	2.0%	1.6%	1.6%	
PEPCO	5,042	5,042	5,340	5,420	5,451	5,527	5,623	5,705	5,769	5,821	5,878	5,944	6,005	6,063	1.1%
%				1.5%	0.6%	1.4%	1.7%	1.5%	1.1%	0.9%	1.0%	1.1%	1.0%	1.0%	
PL	7,163	7,163	7,210	7,182	7,159	7,242	7,369	7,467	7,517	7,573	7,619	7,682	7,723	7,759	0.8%
%				-0.4%	-0.3%	1.2%	1.8%	1.3%	0.7%	0.7%	0.6%	0.8%	0.5%	0.5%	
PS	6,994	6,994	7,010	6,999	7,056	7,180	7,342	7,478	7,534	7,606	7,678	7,774	7,832	7,887	1.2%
%				-0.2%	0.8%	1.8%	2.3%	1.9%	0.7%	1.0%	0.9%	1.3%	0.7%	0.7%	
RECO	245	245	235	237	239	241	243	245	247	249	251	253	255	257	0.8%
%				0.9%	0.8%	0.8%	0.8%	0.8%	0.8%	0.8%	0.8%	0.8%	0.8%	0.8%	
UGI	192	192	200	198	196	198	201	203	204	206	207	208	208	209	0.5%
%				-1.0%	-1.0%	1.0%	1.5%	1.0%	0.5%	1.0%	0.5%	0.5%	0.0%	0.5%	
DIVERSITY (-)				538	497	466	463	539	490	480	491	567	576	597	
PJM MID-ATLANTIC	45,621	45,621	46,460	46,444	46,522	47,343	48,465	49,236	49,807	50,335	50,834	51,376	51,852	52,299	1.2%
%				0.0%	0.2%	1.8%	2.4%	1.6%	1.2%	1.1%	1.0%	1.1%	0.9%	0.9%	
FE/GPU	9,341	9,341	9,290	9,248	9,296	9,490	9,762	9,968	10,097	10,223	10,357	10,503	10,616	10,729	1.5%
%				-0.5%	0.5%	2.1%	2.9%	2.1%	1.3%	1.2%	1.3%	1.4%	1.1%	1.1%	
PLGRP	7,345	7,345	7,400	7,356	7,344	7,428	7,555	7,645	7,701	7,760	7,807	7,863	7,898	7,934	0.8%
%				-0.6%	-0.2%	1.1%	1.7%	1.2%	0.7%	0.8%	0.6%	0.7%	0.4%	0.5%	

Note:
Normal 07/08 and all forecast values are non-coincident as estimated by PJM staff.
Normal 07/08 and all forecast values represent unrestricted peaks.

Table B-2 (Continued)

**WINTER PEAK LOAD (MW) AND GROWTH RATES FOR
EACH PJM MID-ATLANTIC ZONE AND GEOGRAPHIC REGION
2019/20-2023/24**

		19/20	20/21	21/22	22/23	23/24	Annual Growth Rate (15 yr)
AE		2,294	2,320	2,346	2,375	2,391	1.9%
	%	0.6%	1.1%	1.1%	1.2%	0.7%	
BGE		6,697	6,771	6,848	6,916	6,982	1.0%
	%	0.9%	1.1%	1.1%	1.0%	1.0%	
DPL		3,870	3,926	3,980	4,035	4,088	1.4%
	%	1.2%	1.4%	1.4%	1.4%	1.3%	
JCPL		4,664	4,715	4,760	4,810	4,839	1.3%
	%	0.4%	1.1%	1.0%	1.1%	0.6%	
METED		2,905	2,924	2,947	2,965	2,978	1.0%
	%	0.2%	0.7%	0.8%	0.6%	0.4%	
PECO		7,190	7,238	7,290	7,324	7,351	0.8%
	%	0.3%	0.7%	0.7%	0.5%	0.4%	
PENLC		3,306	3,355	3,406	3,454	3,495	1.5%
	%	1.1%	1.5%	1.5%	1.4%	1.2%	
PEPCO		6,117	6,177	6,244	6,306	6,363	1.1%
	%	0.9%	1.0%	1.1%	1.0%	0.9%	
PL		7,763	7,804	7,848	7,880	7,895	0.6%
	%	0.1%	0.5%	0.6%	0.4%	0.2%	
PS		7,912	7,981	8,050	8,122	8,157	1.0%
	%	0.3%	0.9%	0.9%	0.9%	0.4%	
RECO		259	261	263	265	267	0.8%
	%	0.8%	0.8%	0.8%	0.8%	0.8%	
UGI		209	209	210	210	210	0.4%
	%	0.0%	0.0%	0.5%	0.0%	0.0%	
DIVERSITY (-)		474	525	571	647	604	
PJM MID-ATLANTIC		52,712	53,156	53,621	54,015	54,412	1.1%
	%	0.8%	0.8%	0.9%	0.7%	0.7%	
FE/GPU		10,808	10,928	11,039	11,138	11,224	1.3%
	%	0.7%	1.1%	1.0%	0.9%	0.8%	
PLGRP		7,950	7,991	8,028	8,053	8,068	0.6%
	%	0.2%	0.5%	0.5%	0.3%	0.2%	

Table B-2

WINTER PEAK LOAD (MW) AND GROWTH RATES FOR
EACH PJM WESTERN AND PJM SOUTHERN ZONE, GEOGRAPHIC REGION AND RTO
2008/09-2018/19

	METERED 07/08	UNRESTRICTED 07/08	NORMAL 07/08	08/09	09/10	10/11	11/12	12/13	13/14	14/15	15/16	16/17	17/18	18/19	Annual Growth Rate (10 yr)
AEP	24,215	24,215	23,230	22,974	22,885	23,154	23,611	23,956	24,014	24,158	24,321	24,549	24,644	24,729	0.7%
%				-1.1%	-0.4%	1.2%	2.0%	1.5%	0.2%	0.6%	0.7%	0.9%	0.4%	0.3%	
APS	8,136	8,136	8,160	8,258	8,351	8,543	8,714	8,842	8,932	9,021	9,111	9,209	9,287	9,372	1.3%
%				1.2%	1.1%	2.3%	2.0%	1.5%	1.0%	1.0%	1.0%	1.1%	0.8%	0.9%	
COMED	15,848	15,848	15,940	15,617	15,580	15,967	16,670	17,218	17,455	17,724	17,936	18,258	18,435	18,621	1.8%
%				-2.0%	-0.2%	2.5%	4.4%	3.3%	1.4%	1.5%	1.2%	1.8%	1.0%	1.0%	
DAY	3,031	3,031	2,960	2,930	2,896	2,952	3,063	3,140	3,157	3,176	3,194	3,224	3,238	3,249	1.0%
%				-1.0%	-1.2%	1.9%	3.8%	2.5%	0.5%	0.6%	0.6%	0.9%	0.4%	0.3%	
DLCO	2,137	2,137	2,170	2,138	2,126	2,137	2,173	2,196	2,199	2,215	2,235	2,269	2,283	2,302	0.7%
%				-1.5%	-0.6%	0.5%	1.7%	1.1%	0.1%	0.7%	0.9%	1.5%	0.6%	0.8%	
DIVERSITY (-)				1,098	1,024	1,010	1,019	1,145	1,036	1,099	1,136	1,266	1,254	1,334	
PJM WESTERN	51,465	51,465	51,390	50,819	50,814	51,743	53,212	54,207	54,721	55,195	55,661	56,243	56,633	56,939	1.1%
%				-1.1%	0.0%	1.8%	2.8%	1.9%	0.9%	0.9%	0.8%	1.0%	0.7%	0.5%	
DOM	17,028	17,028	16,760	16,677	16,773	17,089	17,621	18,037	18,302	18,551	18,831	19,117	19,403	19,710	1.7%
%				-0.5%	0.6%	1.9%	3.1%	2.4%	1.5%	1.4%	1.5%	1.5%	1.5%	1.6%	
DIVERSITY (-)				1,377	1,359	1,413	1,489	1,424	1,486	1,453	1,479	1,612	1,588	1,508	
PJM RTO	111,724	111,724	113,185	112,563	112,750	114,762	117,809	120,056	121,344	122,628	123,847	125,124	126,300	127,440	1.2%
%				-0.5%	0.2%	1.8%	2.7%	1.9%	1.1%	1.1%	1.0%	1.0%	0.9%	0.9%	

Note:
Normal 07/08 and all forecast values are non-coincident as estimated by PJM staff.
Normal 07/08 and all forecast values represent unrestricted peaks.

Table B-2 (Continued)

**WINTER PEAK LOAD (MW) AND GROWTH RATES FOR
EACH PJM WESTERN AND PJM SOUTHERN ZONE, GEOGRAPHIC REGION AND RTO
2019/20-2023/24**

		19/20	20/21	21/22	22/23	23/24	Annual Growth Rate (15 yr)
AEP		24,671	24,811	24,973	25,073	25,118	0.6%
	%	-0.2%	0.6%	0.7%	0.4%	0.2%	
APS		9,449	9,568	9,681	9,773	9,860	1.2%
	%	0.8%	1.3%	1.2%	1.0%	0.9%	
COMED		18,705	18,874	19,083	19,266	19,311	1.4%
	%	0.5%	0.9%	1.1%	1.0%	0.2%	
DAY		3,243	3,256	3,274	3,284	3,288	0.8%
	%	-0.2%	0.4%	0.6%	0.3%	0.1%	
DLCO		2,297	2,314	2,331	2,356	2,363	0.7%
	%	-0.2%	0.7%	0.7%	1.1%	0.3%	
DIVERSITY (-)		1,113	1,215	1,321	1,420	1,374	
PJM WESTERN		57,252	57,608	58,021	58,332	58,566	1.0%
	%	0.5%	0.6%	0.7%	0.5%	0.4%	
DOM		19,983	20,297	20,626	20,952	21,276	1.6%
	%	1.4%	1.6%	1.6%	1.6%	1.5%	
DIVERSITY (-)		1,589	1,524	1,589	1,660	1,655	
PJM RTO		128,358	129,537	130,679	131,639	132,599	1.1%
	%	0.7%	0.9%	0.9%	0.7%	0.7%	

Table B-3
SPRING (APRIL) PEAK LOAD (MW) FOR
EACH PJM MID-ATLANTIC ZONE AND GEOGRAPHIC REGION
2009-2024

	2009	2010	2011	2012	2013	2014	2015	2016	2017	2018	2019	2020	2021	2022	2023	2024
AE	1,513	1,543	1,652	1,790	1,878	1,941	1,972	2,003	2,030	2,071	2,097	2,136	2,159	2,184	2,202	2,233
BGE	4,909	4,965	5,033	5,095	5,160	5,267	5,376	5,436	5,480	5,594	5,671	5,812	5,909	5,980	6,051	6,142
DPL	2,655	2,664	2,694	2,779	2,852	2,910	2,945	2,973	3,008	3,063	3,115	3,195	3,234	3,257	3,295	3,359
JCPL	3,388	3,441	3,545	3,666	3,756	3,850	3,904	3,952	3,993	4,023	4,070	4,157	4,195	4,219	4,246	4,275
METED	2,249	2,253	2,293	2,370	2,421	2,457	2,476	2,489	2,507	2,537	2,559	2,567	2,574	2,590	2,614	2,632
PECO	5,645	5,595	5,616	5,786	5,886	6,005	6,093	6,086	6,113	6,174	6,221	6,367	6,435	6,357	6,376	6,399
PENLC	2,460	2,448	2,498	2,579	2,627	2,679	2,722	2,770	2,815	2,861	2,907	2,961	3,003	3,040	3,083	3,116
PEPCO	4,582	4,621	4,594	4,664	4,745	4,801	4,907	4,887	4,906	4,949	5,017	5,119	5,222	5,166	5,215	5,255
PL	5,815	5,807	5,900	6,047	6,151	6,217	6,249	6,309	6,341	6,385	6,419	6,461	6,488	6,507	6,536	6,558
PS	6,509	6,581	6,634	6,822	6,952	7,070	7,202	7,207	7,240	7,351	7,416	7,557	7,632	7,617	7,630	7,742
RECO	225	226	226	228	230	231	233	235	237	238	240	242	244	245	247	249
UGI	154	153	155	159	161	163	163	163	164	165	165	165	165	165	165	166
DIVERSITY (-)	2,180	2,170	1,976	1,731	1,728	1,885	2,087	2,035	1,991	1,661	1,673	2,067	1,989	2,039	1,998	1,587
PJM MID-ATLANTIC	37,924	38,127	38,864	40,254	41,091	41,706	42,155	42,475	42,843	43,750	44,224	44,672	45,271	45,288	45,662	46,539
FE/GPU	7,770	7,849	8,046	8,311	8,577	8,750	8,841	8,947	9,059	9,173	9,335	9,483	9,580	9,631	9,708	9,846
PLGRP	5,767	5,780	5,882	6,041	6,152	6,214	6,258	6,303	6,354	6,412	6,454	6,480	6,508	6,539	6,561	6,612

Table B-3
SPRING (APRIL) PEAK LOAD (MW) FOR
EACH PJM WESTERN AND PJM SOUTHERN ZONE, GEOGRAPHIC REGION AND RTO
2009-2024

	2009	2010	2011	2012	2013	2014	2015	2016	2017	2018	2019	2020	2021	2022	2023	2024
AEP	19,235	19,166	19,458	20,040	20,342	20,553	20,659	20,846	20,957	21,086	21,179	21,306	21,373	21,455	21,563	21,578
APS	6,824	6,918	7,074	7,251	7,360	7,461	7,507	7,578	7,642	7,717	7,799	7,899	7,965	8,045	8,141	8,221
COMED	13,631	13,739	14,258	15,188	15,777	16,099	16,299	16,537	16,708	17,122	17,373	17,505	17,673	17,768	17,867	18,270
DAY	2,466	2,440	2,495	2,630	2,698	2,725	2,747	2,755	2,769	2,790	2,794	2,818	2,827	2,821	2,825	2,830
DLCO	1,967	1,955	1,948	1,992	2,025	2,044	2,081	2,090	2,100	2,148	2,170	2,198	2,233	2,211	2,231	2,272
DIVERSITY (-)	1,864	1,698	1,842	1,865	1,908	2,036	1,912	2,104	2,039	2,117	2,203	2,118	2,139	2,161	2,138	2,329
PJM WESTERN	42,259	42,520	43,391	45,236	46,294	46,846	47,381	47,702	48,137	48,746	49,112	49,608	49,932	50,139	50,489	50,842
DOM	13,268	13,398	13,677	14,181	14,543	14,850	15,073	15,297	15,513	15,839	16,180	16,534	16,884	17,083	17,393	17,751
DIVERSITY (-)	1,599	1,488	1,260	1,745	1,809	2,150	1,891	1,380	1,382	1,994	1,886	2,185	2,721	1,533	1,724	2,192
PJM RTO	91,852	92,557	94,672	97,926	100,119	101,252	102,718	104,094	105,111	106,341	107,630	108,629	109,366	110,977	111,820	112,940

Table B-4

**FALL (OCTOBER) PEAK LOAD (MW) FOR
EACH PJM MID-ATLANTIC ZONE AND GEOGRAPHIC REGION
2009-2024**

	2009	2010	2011	2012	2013	2014	2015	2016	2017	2018	2019	2020	2021	2022	2023	2024
AE	1,559	1,623	1,799	1,917	2,007	2,046	2,079	2,107	2,155	2,206	2,236	2,249	2,270	2,297	2,336	2,392
BGE	4,678	4,767	4,891	5,036	5,088	5,168	5,245	5,278	5,440	5,583	5,672	5,716	5,782	5,867	6,004	6,147
DPL	2,514	2,545	2,635	2,758	2,819	2,859	2,892	2,931	2,995	3,065	3,115	3,157	3,203	3,255	3,320	3,391
JCPL	3,532	3,605	3,736	3,955	4,037	4,107	4,159	4,162	4,266	4,364	4,415	4,450	4,444	4,485	4,576	4,670
METED	2,101	2,141	2,212	2,292	2,334	2,360	2,371	2,390	2,426	2,458	2,476	2,478	2,480	2,501	2,529	2,563
PECO	5,461	5,520	5,679	5,927	6,008	6,052	6,089	6,121	6,235	6,364	6,407	6,393	6,409	6,426	6,511	6,616
PENLC	2,390	2,427	2,511	2,593	2,627	2,661	2,700	2,753	2,818	2,883	2,917	2,937	2,973	3,025	3,079	3,133
PEPCO	4,617	4,653	4,671	4,874	4,921	4,961	4,984	4,952	5,070	5,183	5,232	5,245	5,269	5,272	5,380	5,489
PL	5,508	5,574	5,707	5,836	5,923	5,950	5,983	6,025	6,091	6,151	6,192	6,172	6,184	6,224	6,270	6,320
PS	6,863	6,919	7,084	7,400	7,503	7,593	7,647	7,617	7,766	7,937	8,011	8,031	8,020	8,058	8,185	8,358
RECO	244	245	247	259	262	263	263	260	268	273	275	273	273	272	278	284
UGI	149	149	153	156	159	160	160	161	162	163	163	162	162	163	164	164
DIVERSITY (-)	1,206	1,187	1,181	1,309	1,376	1,396	1,373	1,292	1,392	1,420	1,440	1,370	1,316	1,395	1,431	1,464
PJM MID-ATLANTIC	38,410	38,981	40,144	41,694	42,312	42,784	43,199	43,465	44,300	45,210	45,671	45,893	46,153	46,450	47,201	48,063
FE/GPU	7,838	7,988	8,270	8,556	8,739	8,872	8,986	9,060	9,252	9,412	9,525	9,616	9,615	9,709	9,918	10,059
PLGRP	5,623	5,699	5,843	5,965	6,047	6,072	6,116	6,178	6,229	6,273	6,306	6,305	6,328	6,381	6,415	6,440

Table B-4

**FALL (OCTOBER) PEAK LOAD (MW) FOR
EACH PJM WESTERN AND PJM SOUTHERN ZONE, GEOGRAPHIC REGION AND RTO
2009-2024**

	2009	2010	2011	2012	2013	2014	2015	2016	2017	2018	2019	2020	2021	2022	2023	2024
AEP	18,398	18,531	19,007	19,624	19,793	19,928	19,974	20,029	20,249	20,440	20,537	20,518	20,496	20,583	20,748	20,948
APS	6,473	6,613	6,796	6,950	7,040	7,101	7,139	7,218	7,306	7,424	7,500	7,525	7,585	7,690	7,797	7,929
COMED	13,464	13,828	14,586	15,551	15,958	16,276	16,491	16,629	16,996	17,340	17,585	17,719	17,799	17,863	18,102	18,341
DAY	2,347	2,382	2,501	2,637	2,675	2,693	2,699	2,705	2,741	2,773	2,783	2,772	2,767	2,773	2,796	2,827
DLCO	1,881	1,886	1,916	1,982	2,007	2,030	2,049	2,057	2,102	2,149	2,175	2,170	2,180	2,188	2,223	2,275
DIVERSITY (-)	985	1,044	990	1,367	1,367	1,434	1,344	1,190	1,391	1,578	1,627	1,530	1,414	1,317	1,492	1,803
PJM WESTERN	41,578	42,196	43,816	45,377	46,106	46,594	47,008	47,448	48,003	48,548	48,953	49,174	49,413	49,780	50,174	50,517
DOM	13,093	13,278	13,789	14,475	14,746	15,011	15,216	15,363	15,819	16,186	16,507	16,736	16,955	17,274	17,706	18,126
DIVERSITY (-)	1,312	1,314	1,506	1,539	1,505	1,527	1,452	1,798	1,740	1,656	1,703	1,808	1,860	2,185	1,990	1,851
PJM RTO	91,769	93,141	96,243	100,007	101,659	102,862	103,971	104,478	106,382	108,288	109,428	109,995	110,661	111,319	113,091	114,855

Table B-5

**MONTHLY PEAK FORECAST (MW) FOR EACH
PJM MID-ATLANTIC ZONE AND GEOGRAPHIC REGION**

	AE	BGE	DPL	JCPL	METED	PECO	PENLC	PEPCO	PL	PS	RECO	UGI	MID-ATLANTIC DIVERSITY	PJM MID- ATLANTIC
Jan 2009	1,797	5,986	3,307	3,978	2,560	6,526	2,790	5,420	7,182	6,999	230	198	529	46,444
Feb 2009	1,732	5,757	3,205	3,794	2,504	6,302	2,730	5,222	6,951	6,749	220	189	439	44,916
Mar 2009	1,578	5,224	2,881	3,552	2,400	5,911	2,612	4,688	6,380	6,476	216	171	1,726	40,363
Apr 2009	1,513	4,909	2,655	3,388	2,249	5,645	2,460	4,582	5,815	6,509	225	154	2,180	37,924
May 2009	1,805	5,633	2,964	4,450	2,380	6,537	2,366	5,536	5,758	8,294	326	146	1,800	44,395
Jun 2009	2,363	6,622	3,636	5,694	2,731	7,936	2,692	6,463	6,712	9,987	395	177	412	54,996
Jul 2009	2,692	7,303	3,972	6,357	2,866	8,455	2,786	6,960	7,106	10,858	435	190	359	59,621
Aug 2009	2,563	6,930	3,828	5,745	2,752	8,102	2,721	6,646	6,805	10,035	388	180	196	56,499
Sep 2009	2,173	6,241	3,307	5,064	2,467	7,099	2,558	6,027	6,256	9,046	338	165	827	49,914
Oct 2009	1,559	4,678	2,514	3,532	2,101	5,461	2,390	4,617	5,508	6,863	244	149	1,206	38,410
Nov 2009	1,549	4,836	2,659	3,534	2,214	5,610	2,513	4,467	5,990	6,447	221	167	470	39,737
Dec 2009	1,801	5,688	3,124	4,022	2,487	6,308	2,749	5,174	6,835	7,021	239	194	417	45,225
	AE	BGE	DPL	JCPL	METED	PECO	PENLC	PEPCO	PL	PS	RECO	UGI	DIVERSITY	MID-ATLANTIC
Jan 2010	1,805	6,017	3,301	4,027	2,555	6,438	2,775	5,451	7,159	7,056	232	196	490	46,522
Feb 2010	1,745	5,817	3,209	3,854	2,505	6,231	2,720	5,284	6,968	6,827	221	188	394	45,175
Mar 2010	1,614	5,300	2,904	3,637	2,394	5,898	2,589	4,767	6,355	6,572	218	170	1,594	40,824
Apr 2010	1,543	4,965	2,664	3,441	2,253	5,595	2,448	4,621	5,807	6,581	226	153	2,170	38,127
May 2010	1,843	5,705	2,966	4,530	2,375	6,455	2,357	5,544	5,743	8,381	328	145	1,777	44,595
Jun 2010	2,423	6,775	3,673	5,847	2,763	7,927	2,702	6,565	6,756	10,187	401	176	487	55,708
Jul 2010	2,761	7,446	4,002	6,504	2,906	8,459	2,806	7,026	7,155	11,022	441	191	378	60,341
Aug 2010	2,643	7,102	3,877	5,899	2,803	8,157	2,749	6,739	6,873	10,232	394	181	50	57,599
Sep 2010	2,232	6,355	3,321	5,153	2,497	7,092	2,577	6,076	6,292	9,161	341	165	804	50,458
Oct 2010	1,623	4,767	2,545	3,605	2,141	5,520	2,427	4,653	5,574	6,919	245	149	1,187	38,981
Nov 2010	1,609	4,934	2,697	3,623	2,259	5,670	2,555	4,517	6,076	6,556	223	168	428	40,459
Dec 2010	1,854	5,760	3,140	4,108	2,531	6,355	2,794	5,213	6,898	7,148	241	196	396	45,842
	AE	BGE	DPL	JCPL	METED	PECO	PENLC	PEPCO	PL	PS	RECO	UGI	DIVERSITY	MID-ATLANTIC
Jan 2011	1,865	6,118	3,356	4,117	2,610	6,531	2,824	5,527	7,242	7,180	234	198	459	47,343
Feb 2011	1,805	5,911	3,260	3,940	2,555	6,313	2,766	5,351	7,048	6,949	223	190	390	45,921
Mar 2011	1,666	5,334	2,906	3,726	2,424	5,868	2,628	4,746	6,429	6,603	219	171	1,241	41,479
Apr 2011	1,652	5,033	2,694	3,545	2,293	5,616	2,498	4,594	5,900	6,634	226	155	1,976	38,864
May 2011	1,982	5,869	3,046	4,697	2,450	6,616	2,419	5,647	5,920	8,584	337	148	1,619	46,096
Jun 2011	2,584	7,007	3,791	6,060	2,844	8,132	2,766	6,687	6,913	10,469	413	180	436	57,410
Jul 2011	2,980	7,668	4,138	6,717	2,995	8,681	2,877	7,141	7,319	11,292	451	195	427	62,027
Aug 2011	2,856	7,330	4,010	6,126	2,886	8,376	2,822	6,866	7,045	10,545	406	185	0	59,453
Sep 2011	2,417	6,499	3,411	5,297	2,562	7,230	2,640	6,146	6,398	9,344	347	167	599	51,859
Oct 2011	1,799	4,891	2,635	3,736	2,212	5,679	2,511	4,671	5,707	7,084	247	153	1,181	40,144
Nov 2011	1,755	5,027	2,783	3,753	2,325	5,829	2,640	4,594	6,204	6,728	225	170	408	41,625
Dec 2011	1,995	5,853	3,233	4,234	2,603	6,506	2,876	5,301	7,035	7,319	243	198	449	46,947

Table B-5

**MONTHLY PEAK FORECAST (MW) FOR EACH
EACH PJM WESTERN AND PJM SOUTHERN ZONE, GEOGRAPHIC REGION AND RTO**

	AEP	APS	COMED	DAY	DLCO	WESTERN DIVERSITY	PJM WESTERN	DOM	RTO DIVERSITY	PJM RTO
Jan 2009	22,974	8,258	15,366	2,930	2,137	846	50,819	16,677	1,377	112,563
Feb 2009	22,348	7,986	14,911	2,824	2,075	743	49,401	16,039	2,060	108,296
Mar 2009	20,731	7,364	13,971	2,617	1,988	1,342	45,329	14,250	1,226	98,716
Apr 2009	19,235	6,824	13,631	2,466	1,967	1,864	42,259	13,268	1,599	91,852
May 2009	19,690	6,796	15,999	2,679	2,243	1,761	45,646	15,090	2,971	102,160
Jun 2009	22,763	8,117	20,642	3,206	2,724	1,292	56,160	17,752	3,674	125,234
Jul 2009	23,682	8,538	22,472	3,399	2,862	1,252	59,701	18,982	3,876	134,428
Aug 2009	23,236	8,189	21,356	3,289	2,724	1,202	57,592	18,270	4,864	127,497
Sep 2009	21,366	7,567	18,589	3,001	2,500	1,362	51,661	16,242	2,996	114,821
Oct 2009	18,398	6,473	13,464	2,347	1,881	985	41,578	13,093	1,312	91,769
Nov 2009	19,578	6,968	13,779	2,463	1,914	676	44,026	13,300	607	96,456
Dec 2009	22,030	8,016	15,580	2,801	2,124	613	49,938	15,669	1,468	109,364
Jan 2010	22,885	8,351	15,429	2,896	2,126	873	50,814	16,773	1,359	112,750
Feb 2010	22,318	8,094	14,988	2,794	2,065	760	49,499	16,195	2,234	108,635
Mar 2010	20,598	7,455	14,076	2,566	1,977	1,206	45,466	14,377	1,131	99,536
Apr 2010	19,166	6,918	13,739	2,440	1,955	1,698	42,520	13,398	1,488	92,557
May 2010	19,594	6,925	16,159	2,650	2,224	1,670	45,882	15,218	3,123	102,572
Jun 2010	22,942	8,294	20,876	3,209	2,728	1,426	56,623	18,029	3,939	126,421
Jul 2010	23,817	8,705	22,803	3,414	2,865	1,324	60,280	19,264	3,847	136,038
Aug 2010	23,443	8,372	21,775	3,315	2,743	1,230	58,418	18,638	5,439	129,216
Sep 2010	21,433	7,687	18,868	3,002	2,496	1,266	52,220	16,451	3,308	115,821
Oct 2010	18,531	6,613	13,828	2,382	1,886	1,044	42,196	13,278	1,314	93,141
Nov 2010	19,810	7,129	14,133	2,512	1,924	649	44,859	13,556	603	98,271
Dec 2010	22,190	8,179	15,967	2,844	2,136	712	50,604	15,912	1,281	111,077
Jan 2011	23,154	8,543	15,878	2,952	2,137	921	51,743	17,089	1,413	114,762
Feb 2011	22,490	8,276	15,427	2,849	2,074	912	50,204	16,461	2,028	110,558
Mar 2011	20,787	7,606	14,459	2,597	1,966	1,319	46,096	14,531	769	101,337
Apr 2011	19,458	7,074	14,258	2,495	1,948	1,842	43,391	13,677	1,260	94,672
May 2011	20,083	7,142	16,942	2,758	2,258	1,833	47,350	15,663	2,711	106,398
Jun 2011	23,470	8,540	21,750	3,330	2,768	1,482	58,376	18,560	4,164	130,182
Jul 2011	24,419	8,949	23,725	3,552	2,915	1,419	62,141	19,921	3,957	140,132
Aug 2011	24,035	8,622	22,738	3,456	2,796	1,027	60,620	19,262	5,775	133,560
Sep 2011	21,871	7,824	19,625	3,114	2,518	1,163	53,789	16,940	3,492	119,096
Oct 2011	19,007	6,796	14,586	2,501	1,916	990	43,816	13,789	1,506	96,243
Nov 2011	20,266	7,307	14,860	2,626	1,960	684	46,335	14,005	600	101,365
Dec 2011	22,693	8,368	16,670	2,959	2,173	684	52,179	16,424	1,425	114,125

Table B-6

**MONTHLY PEAK FORECAST (MW)
FOR FE/GPU AND PLGRP**

	FE/GPU	PLGRP
Jan 2009	9,248	7,356
Feb 2009	8,958	7,124
Mar 2009	8,298	6,385
Apr 2009	7,770	5,767
May 2009	8,823	5,773
Jun 2009	10,873	6,882
Jul 2009	11,866	7,266
Aug 2009	11,057	6,985
Sep 2009	9,897	6,404
Oct 2009	7,838	5,623
Nov 2009	8,192	6,133
Dec 2009	9,217	7,016
	FE/GPU	PLGRP
Jan 2010	9,296	7,344
Feb 2010	9,024	7,152
Mar 2010	8,384	6,385
Apr 2010	7,849	5,780
May 2010	8,936	5,782
Jun 2010	11,066	6,887
Jul 2010	12,052	7,305
Aug 2010	11,337	7,054
Sep 2010	10,056	6,448
Oct 2010	7,988	5,699
Nov 2010	8,374	6,236
Dec 2010	9,408	7,084
	FE/GPU	PLGRP
Jan 2011	9,490	7,428
Feb 2011	9,216	7,232
Mar 2011	8,549	6,472
Apr 2011	8,046	5,882
May 2011	9,277	5,967
Jun 2011	11,426	7,052
Jul 2011	12,421	7,471
Aug 2011	11,711	7,230
Sep 2011	10,353	6,565
Oct 2011	8,270	5,843
Nov 2011	8,657	6,372
Dec 2011	9,679	7,212

Note: FE/GPU contains JCPL, METED, and PENLC zones; PLGRP contains PL and UGI zones.

THIS PAGE INTENTIONALLY LEFT BLANK

TABLE B-7

PJM MID-ATLANTIC REGION LOAD MANAGEMENT
PLACED UNDER PJM COORDINATION - SUMMER (MW)

	2009	2010	2011	2012	2013	2014	2015	2016	2017	2018	2019	2020	2021	2022	2023	2024
AE																
a) CONTRACTUALLY INTERRUPTIBLE	52	27	12	12	12	12	12	12	12	12	12	12	12	12	12	12
b) DIRECT CONTROL	0	0	0	0	0	0	0	0	0	0	0	0	0	0	0	0
TOTAL LOAD MANAGEMENT	52	27	12	12	12	12	12	12	12	12	12	12	12	12	12	12
BGE																
a) CONTRACTUALLY INTERRUPTIBLE	560	477	583	583	583	583	583	583	583	583	583	583	583	583	583	583
b) DIRECT CONTROL	213	213	213	213	213	213	213	213	213	213	213	213	213	213	213	213
TOTAL LOAD MANAGEMENT	773	690	796	796	796	796	796	796	796	796	796	796	796	796	796	796
DPL																
a) CONTRACTUALLY INTERRUPTIBLE	93	57	73	73	73	73	73	73	73	73	73	73	73	73	73	73
b) DIRECT CONTROL	26	26	26	26	26	26	26	26	26	26	26	26	26	26	26	26
TOTAL LOAD MANAGEMENT	119	83	99	99	99	99	99	99	99	99	99	99	99	99	99	99
JCPL																
a) CONTRACTUALLY INTERRUPTIBLE	167	90	62	62	62	62	62	62	62	62	62	62	62	62	62	62
b) DIRECT CONTROL	48	48	48	48	48	48	48	48	48	48	48	48	48	48	48	48
TOTAL LOAD MANAGEMENT	215	138	110	110	110	110	110	110	110	110	110	110	110	110	110	110
METED																
a) CONTRACTUALLY INTERRUPTIBLE	68	93	77	77	77	77	77	77	77	77	77	77	77	77	77	77
b) DIRECT CONTROL	1	1	1	1	1	1	1	1	1	1	1	1	1	1	1	1
TOTAL LOAD MANAGEMENT	69	94	78	78	78	78	78	78	78	78	78	78	78	78	78	78
PECO																
a) CONTRACTUALLY INTERRUPTIBLE	352	237	236	236	236	236	236	236	236	236	236	236	236	236	236	236
b) DIRECT CONTROL	0	0	0	0	0	0	0	0	0	0	0	0	0	0	0	0
TOTAL LOAD MANAGEMENT	352	237	236	236	236	236	236	236	236	236	236	236	236	236	236	236
PENLC																
a) CONTRACTUALLY INTERRUPTIBLE	15	40	24	24	24	24	24	24	24	24	24	24	24	24	24	24
b) DIRECT CONTROL	8	8	8	8	8	8	8	8	8	8	8	8	8	8	8	8
TOTAL LOAD MANAGEMENT	23	48	32	32	32	32	32	32	32	32	32	32	32	32	32	32
PEPCO																
a) CONTRACTUALLY INTERRUPTIBLE	120	46	154	154	154	154	154	154	154	154	154	154	154	154	154	154
b) DIRECT CONTROL	11	11	11	11	11	11	11	11	11	11	11	11	11	11	11	11
TOTAL LOAD MANAGEMENT	131	57	165	165	165	165	165	165	165	165	165	165	165	165	165	165
PL																
a) CONTRACTUALLY INTERRUPTIBLE	282	290	312	312	312	312	312	312	312	312	312	312	312	312	312	312
b) DIRECT CONTROL	0	0	0	0	0	0	0	0	0	0	0	0	0	0	0	0
TOTAL LOAD MANAGEMENT	282	290	312	312	312	312	312	312	312	312	312	312	312	312	312	312
PS																
a) CONTRACTUALLY INTERRUPTIBLE	231	137	94	94	94	94	94	94	94	94	94	94	94	94	94	94
b) DIRECT CONTROL	62	62	62	62	62	62	62	62	62	62	62	62	62	62	62	62
TOTAL LOAD MANAGEMENT	293	199	156	156	156	156	156	156	156	156	156	156	156	156	156	156
RECO																
a) CONTRACTUALLY INTERRUPTIBLE	2	0	0	0	0	0	0	0	0	0	0	0	0	0	0	0
b) DIRECT CONTROL	0	0	0	0	0	0	0	0	0	0	0	0	0	0	0	0
TOTAL LOAD MANAGEMENT	2	0	0	0	0	0	0	0	0	0	0	0	0	0	0	0
UGI																
a) CONTRACTUALLY INTERRUPTIBLE	0	0	0	0	0	0	0	0	0	0	0	0	0	0	0	0
b) DIRECT CONTROL	0	0	0	0	0	0	0	0	0	0	0	0	0	0	0	0
TOTAL LOAD MANAGEMENT	0	0	0	0	0	0	0	0	0	0	0	0	0	0	0	0
PJM MID-ATLANTIC																
a) CONTRACTUALLY INTERRUPTIBLE	1,942	1,494	1,627	1,627	1,627	1,627	1,627	1,627	1,627	1,627	1,627	1,627	1,627	1,627	1,627	1,627
b) DIRECT CONTROL	369	369	369	369	369	369	369	369	369	369	369	369	369	369	369	369
TOTAL LOAD MANAGEMENT	2,311	1,863	1,996	1,996	1,996	1,996	1,996	1,996	1,996	1,996	1,996	1,996	1,996	1,996	1,996	1,996

Notes: Forecast represents the amount of Demand Resources cleared in RPM auctions plus the 5-year average of Interruptible Load for Reliability/Active Load Management.
Winter load management is equal to Contractually Interruptible.

TABLE B-7

PJM WESTERN REGION AND PJM SOUTHERN REGION LOAD MANAGEMENT
PLACED UNDER PJM COORDINATION - SUMMER (MW)

	2009	2010	2011	2012	2013	2014	2015	2016	2017	2018	2019	2020	2021	2022	2023	2024
AEP																
a) CONTRACTUALLY INTERRUPTIBLE	545	535	550	550	550	550	550	550	550	550	550	550	550	550	550	550
b) DIRECT CONTROL	32	32	32	32	32	32	32	32	32	32	32	32	32	32	32	32
TOTAL LOAD MANAGEMENT	577	567	582	582	582	582	582	582	582	582	582	582	582	582	582	582
APS																
a) CONTRACTUALLY INTERRUPTIBLE	189	92	137	137	137	137	137	137	137	137	137	137	137	137	137	137
b) DIRECT CONTROL	1	1	1	1	1	1	1	1	1	1	1	1	1	1	1	1
TOTAL LOAD MANAGEMENT	190	93	138	138	138	138	138	138	138	138	138	138	138	138	138	138
COMED																
a) CONTRACTUALLY INTERRUPTIBLE	532	395	498	498	498	498	498	498	498	498	498	498	498	498	498	498
b) DIRECT CONTROL	60	60	60	60	60	60	60	60	60	60	60	60	60	60	60	60
TOTAL LOAD MANAGEMENT	592	455	558	558	558	558	558	558	558	558	558	558	558	558	558	558
DAY																
a) CONTRACTUALLY INTERRUPTIBLE	19	17	32	32	32	32	32	32	32	32	32	32	32	32	32	32
b) DIRECT CONTROL	3	3	3	3	3	3	3	3	3	3	3	3	3	3	3	3
TOTAL LOAD MANAGEMENT	22	20	35	35	35	35	35	35	35	35	35	35	35	35	35	35
DLCO																
a) CONTRACTUALLY INTERRUPTIBLE	22	21	21	21	21	21	21	21	21	21	21	21	21	21	21	21
b) DIRECT CONTROL	0	0	0	0	0	0	0	0	0	0	0	0	0	0	0	0
TOTAL LOAD MANAGEMENT	22	21	21	21	21	21	21	21	21	21	21	21	21	21	21	21
PJM WESTERN																
a) CONTRACTUALLY INTERRUPTIBLE	1,307	1,060	1,238	1,238	1,238	1,238	1,238	1,238	1,238	1,238	1,238	1,238	1,238	1,238	1,238	1,238
b) DIRECT CONTROL	96	96	96	96	96	96	96	96	96	96	96	96	96	96	96	96
TOTAL LOAD MANAGEMENT	1,403	1,156	1,334	1,334	1,334	1,334	1,334	1,334	1,334	1,334	1,334	1,334	1,334	1,334	1,334	1,334
DOM																
a) CONTRACTUALLY INTERRUPTIBLE	28	23	126	126	126	126	126	126	126	126	126	126	126	126	126	126
b) DIRECT CONTROL	0	0	0	0	0	0	0	0	0	0	0	0	0	0	0	0
TOTAL LOAD MANAGEMENT	28	23	126	126	126	126	126	126	126	126	126	126	126	126	126	126
PJM RTO																
a) CONTRACTUALLY INTERRUPTIBLE	3,277	2,577	2,991	2,991	2,991	2,991	2,991	2,991	2,991	2,991	2,991	2,991	2,991	2,991	2,991	2,991
b) DIRECT CONTROL	465	465	465	465	465	465	465	465	465	465	465	465	465	465	465	465
TOTAL LOAD MANAGEMENT	3,742	3,042	3,456	3,456	3,456	3,456	3,456	3,456	3,456	3,456	3,456	3,456	3,456	3,456	3,456	3,456

Notes: Forecast represents the amount of Demand Resources cleared in RPM auctions plus the 5-year average of Interruptible Load for Reliability/Active Load Management.
Winter load management is equal to Contractually Interruptible.

TABLE B-8

PJM MID-ATLANTIC REGION ENERGY EFFICIENCY PROGRAMS
AND SUM OF ENERGY EFFICIENCY AND LOAD MANAGEMENT - SUMMER (MW)

	2009	2010	2011	2012	2013	2014	2015	2016	2017	2018	2019	2020	2021	2022	2023	2024
AE																
a) ENERGY EFFICIENCY	0	0	0	0	0	0	0	0	0	0	0	0	0	0	0	0
b) LOAD MANAGEMENT	52	27	12	12	12	12	12	12	12	12	12	12	12	12	12	12
TOTAL	52	27	12	12	12	12	12	12	12	12	12	12	12	12	12	12
BGE																
a) ENERGY EFFICIENCY	0	0	0	0	0	0	0	0	0	0	0	0	0	0	0	0
b) LOAD MANAGEMENT	773	690	796	796	796	796	796	796	796	796	796	796	796	796	796	796
TOTAL	773	690	796	796	796	796	796	796	796	796	796	796	796	796	796	796
DPL																
a) ENERGY EFFICIENCY	0	0	0	0	0	0	0	0	0	0	0	0	0	0	0	0
b) LOAD MANAGEMENT	119	83	99	99	99	99	99	99	99	99	99	99	99	99	99	99
TOTAL	119	83	99	99	99	99	99	99	99	99	99	99	99	99	99	99
JCPL																
a) ENERGY EFFICIENCY	0	0	0	0	0	0	0	0	0	0	0	0	0	0	0	0
b) LOAD MANAGEMENT	215	138	110	110	110	110	110	110	110	110	110	110	110	110	110	110
TOTAL	215	138	110	110	110	110	110	110	110	110	110	110	110	110	110	110
METED																
a) ENERGY EFFICIENCY	0	0	0	0	0	0	0	0	0	0	0	0	0	0	0	0
b) LOAD MANAGEMENT	69	94	78	78	78	78	78	78	78	78	78	78	78	78	78	78
TOTAL	69	94	78	78	78	78	78	78	78	78	78	78	78	78	78	78
PECO																
a) ENERGY EFFICIENCY	0	0	0	0	0	0	0	0	0	0	0	0	0	0	0	0
b) LOAD MANAGEMENT	352	237	236	236	236	236	236	236	236	236	236	236	236	236	236	236
TOTAL	352	237	236	236	236	236	236	236	236	236	236	236	236	236	236	236
PENLC																
a) ENERGY EFFICIENCY	0	0	0	0	0	0	0	0	0	0	0	0	0	0	0	0
b) LOAD MANAGEMENT	23	48	32	32	32	32	32	32	32	32	32	32	32	32	32	32
TOTAL	23	48	32	32	32	32	32	32	32	32	32	32	32	32	32	32
PEPCO																
a) ENERGY EFFICIENCY	0	0	0	0	0	0	0	0	0	0	0	0	0	0	0	0
b) LOAD MANAGEMENT	131	57	165	165	165	165	165	165	165	165	165	165	165	165	165	165
TOTAL	131	57	165	165	165	165	165	165	165	165	165	165	165	165	165	165
PL																
a) ENERGY EFFICIENCY	0	0	0	0	0	0	0	0	0	0	0	0	0	0	0	0
b) LOAD MANAGEMENT	282	290	312	312	312	312	312	312	312	312	312	312	312	312	312	312
TOTAL	282	290	312	312	312	312	312	312	312	312	312	312	312	312	312	312
PS																
a) ENERGY EFFICIENCY	0	0	0	0	0	0	0	0	0	0	0	0	0	0	0	0
b) LOAD MANAGEMENT	293	199	156	156	156	156	156	156	156	156	156	156	156	156	156	156
TOTAL	293	199	156	156	156	156	156	156	156	156	156	156	156	156	156	156
RECO																
a) ENERGY EFFICIENCY	0	0	0	0	0	0	0	0	0	0	0	0	0	0	0	0
b) LOAD MANAGEMENT	2	0	0	0	0	0	0	0	0	0	0	0	0	0	0	0
TOTAL	2	0	0	0	0	0	0	0	0	0	0	0	0	0	0	0
UGI																
a) ENERGY EFFICIENCY	0	0	0	0	0	0	0	0	0	0	0	0	0	0	0	0
b) LOAD MANAGEMENT	0	0	0	0	0	0	0	0	0	0	0	0	0	0	0	0
TOTAL	0	0	0	0	0	0	0	0	0	0	0	0	0	0	0	0
PJM MID-ATLANTIC																
a) ENERGY EFFICIENCY	0	0	0	0	0	0	0	0	0	0	0	0	0	0	0	0
b) LOAD MANAGEMENT	2,311	1,863	1,996	1,996	1,996	1,996	1,996	1,996	1,996	1,996	1,996	1,996	1,996	1,996	1,996	1,996
TOTAL	2,311	1,863	1,996	1,996	1,996	1,996	1,996	1,996	1,996	1,996	1,996	1,996	1,996	1,996	1,996	1,996

Notes: Energy Efficiency values are impacts approved for use in PJM Reliability Pricing Model.
At time of publication, no Energy Efficiency programs have been approved as RPM resources.
Load Management detail appears in Table B-7.

TABLE B-8

**PJM WESTERN REGION AND PJM SOUTHERN REGION ENERGY EFFICIENCY PROGRAMS
AND SUM OF ENERGY EFFICIENCY AND LOAD MANAGEMENT - SUMMER (MW)**

	2009	2010	2011	2012	2013	2014	2015	2016	2017	2018	2019	2020	2021	2022	2023	2024
AEP																
a) ENERGY EFFICIENCY	0	0	0	0	0	0	0	0	0	0	0	0	0	0	0	0
b) LOAD MANAGEMENT	577	567	582	582	582	582	582	582	582	582	582	582	582	582	582	582
TOTAL	577	567	582	582	582	582	582	582	582	582	582	582	582	582	582	582
APS																
a) ENERGY EFFICIENCY	0	0	0	0	0	0	0	0	0	0	0	0	0	0	0	0
b) LOAD MANAGEMENT	190	93	138	138	138	138	138	138	138	138	138	138	138	138	138	138
TOTAL	190	93	138	138	138	138	138	138	138	138	138	138	138	138	138	138
COMED																
a) ENERGY EFFICIENCY	0	0	0	0	0	0	0	0	0	0	0	0	0	0	0	0
b) LOAD MANAGEMENT	592	455	558	558	558	558	558	558	558	558	558	558	558	558	558	558
TOTAL	592	455	558	558	558	558	558	558	558	558	558	558	558	558	558	558
DAY																
a) ENERGY EFFICIENCY	0	0	0	0	0	0	0	0	0	0	0	0	0	0	0	0
b) LOAD MANAGEMENT	22	20	35	35	35	35	35	35	35	35	35	35	35	35	35	35
TOTAL	22	20	35	35	35	35	35	35	35	35	35	35	35	35	35	35
DLCO																
a) ENERGY EFFICIENCY	0	0	0	0	0	0	0	0	0	0	0	0	0	0	0	0
b) LOAD MANAGEMENT	22	21	21	21	21	21	21	21	21	21	21	21	21	21	21	21
TOTAL	22	21	21	21	21	21	21	21	21	21	21	21	21	21	21	21
PJM WESTERN																
a) ENERGY EFFICIENCY	0	0	0	0	0	0	0	0	0	0	0	0	0	0	0	0
b) LOAD MANAGEMENT	1,403	1,156	1,334	1,334	1,334	1,334	1,334	1,334	1,334	1,334	1,334	1,334	1,334	1,334	1,334	1,334
TOTAL	1,403	1,156	1,334	1,334	1,334	1,334	1,334	1,334	1,334	1,334	1,334	1,334	1,334	1,334	1,334	1,334
DOM																
a) ENERGY EFFICIENCY	0	0	0	0	0	0	0	0	0	0	0	0	0	0	0	0
b) LOAD MANAGEMENT	28	23	126	126	126	126	126	126	126	126	126	126	126	126	126	126
TOTAL	28	23	126	126	126	126	126	126	126	126	126	126	126	126	126	126
PJM RTO																
a) ENERGY EFFICIENCY	0	0	0	0	0	0	0	0	0	0	0	0	0	0	0	0
b) LOAD MANAGEMENT	3,742	3,042	3,456	3,456	3,456	3,456	3,456	3,456	3,456	3,456	3,456	3,456	3,456	3,456	3,456	3,456
TOTAL	3,742	3,042	3,456	3,456	3,456	3,456	3,456	3,456	3,456	3,456	3,456	3,456	3,456	3,456	3,456	3,456

Notes: Energy Efficiency values are impacts approved for use in PJM Reliability Pricing Model.
At time of publication, no Energy Efficiency programs have been approved as RPM resources.
Load Management detail appears in Table B-7.

Table B-9

**ADJUSTMENTS TO SUMMER PEAK LOAD (MW) FOR
EACH PJM ZONE AND RTO
2009-2024**

	2009	2010	2011	2012	2013	2014	2015	2016	2017	2018	2019	2020	2021	2022	2023	2024
AE	0	0	0	0	0	0	0	0	0	0	0	0	0	0	0	0
BGE	0	0	0	0	0	0	0	0	0	0	0	0	0	0	0	0
DPL	0	0	0	0	0	0	0	0	0	0	0	0	0	0	0	0
JCPL	0	0	0	0	0	0	0	0	0	0	0	0	0	0	0	0
METED	0	0	0	0	0	0	0	0	0	0	0	0	0	0	0	0
PECO	0	0	0	0	0	0	0	0	0	0	0	0	0	0	0	0
PENLC	0	0	0	0	0	0	0	0	0	0	0	0	0	0	0	0
PEPCO	0	0	0	0	0	0	0	0	0	0	0	0	0	0	0	0
PL	0	0	0	0	0	0	0	0	0	0	0	0	0	0	0	0
PS	0	0	0	0	0	0	0	0	0	0	0	0	0	0	0	0
RECO	0	0	0	0	0	0	0	0	0	0	0	0	0	0	0	0
UGI	0	0	0	0	0	0	0	0	0	0	0	0	0	0	0	0
AEP	0	0	0	0	0	0	0	0	0	0	0	0	0	0	0	0
APS	0	0	0	0	0	0	0	0	0	0	0	0	0	0	0	0
COMED	0	0	0	0	0	0	0	0	0	0	0	0	0	0	0	0
DAY	0	0	0	0	0	0	0	0	0	0	0	0	0	0	0	0
DLCO	0	0	0	0	0	0	0	0	0	0	0	0	0	0	0	0
DOM	0	0	0	0	0	0	0	0	0	0	0	0	0	0	0	0
PJM RTO	0	0	0	0	0	0	0	0	0	0	0	0	0	0	0	0

Notes: Adjustment values presented here are reflected in Tables B-1 through B-6 and Table B-10.

Adjustments are large, unanticipated load changes deemed by PJM to not be captured in the forecast model.

TABLE C-1

**PJM LOCATIONAL DELIVERABILITY AREAS
CENTRAL MID-ATLANTIC: BGE, METED, PEPSCO, PL AND UGI
SEASONAL PEAKS - MW**

YEAR	SPRING (WK 14-19)	SUMMER (WK 20-39)	FALL (WK 40-45)	WINTER (WK 46-13)
2009	16,998	24,167	16,598	21,197
2010	17,082	24,476	16,742	21,271
2011	17,394	25,055	17,123	21,613
2012	17,786	25,552	17,663	21,947
2013	18,041	25,952	17,917	22,210
2014	18,261	26,284	18,085	22,419
2015	18,435	26,602	18,240	22,620
2016	18,630	26,915	18,323	22,838
2017	18,796	27,253	18,640	23,037
2018	19,009	27,559	18,940	23,209
2019	19,144	27,879	19,132	23,392
2020	19,357	28,181	19,181	23,555
2021	19,504	28,466	19,290	23,763
2022	19,670	28,765	19,473	23,971
2023	19,848	29,043	19,748	24,102
2024	20,087	29,343	19,988	24,238

TABLE C-2

**PJM LOCATIONAL DELIVERABILITY AREAS
WESTERN MID-ATLANTIC: METED, PENLC, PL AND UGI
SEASONAL PEAKS - MW**

YEAR	SPRING (WK 14-19)	SUMMER (WK 20-39)	FALL (WK 40-45)	WINTER (WK 46-13)
2009	10,257	12,829	10,066	12,647
2010	10,293	12,935	10,190	12,619
2011	10,499	13,253	10,465	12,807
2012	10,808	13,598	10,772	13,087
2013	11,028	13,839	10,922	13,285
2014	11,172	14,011	11,009	13,440
2015	11,297	14,167	11,119	13,559
2016	11,414	14,302	11,230	13,684
2017	11,542	14,457	11,401	13,815
2018	11,676	14,586	11,519	13,928
2019	11,793	14,721	11,606	14,037
2020	11,882	14,848	11,657	14,122
2021	11,962	14,944	11,715	14,223
2022	12,052	15,047	11,824	14,323
2023	12,127	15,147	11,948	14,400
2024	12,261	15,253	12,044	14,476

TABLE C-3

**PJM LOCATIONAL DELIVERABILITY AREAS
EASTERN MID-ATLANTIC: AE, DPL, JCPL, PECO, PS AND RECO
SEASONAL PEAKS - MW**

YEAR	SPRING (WK 14-19)	SUMMER (WK 20-39)	FALL (WK 40-45)	WINTER (WK 46-13)
2009	18,792	32,520	19,878	22,617
2010	18,929	32,921	20,192	22,667
2011	19,505	33,991	20,775	23,105
2012	20,206	35,014	22,027	23,773
2013	20,708	35,721	22,439	24,252
2014	20,996	36,218	22,707	24,541
2015	21,323	36,663	22,860	24,818
2016	21,489	37,117	22,789	25,069
2017	21,723	37,559	23,378	25,343
2018	22,106	37,934	23,991	25,587
2019	22,350	38,380	24,251	25,821
2020	22,516	38,755	24,301	25,995
2021	22,737	39,117	24,389	26,218
2022	22,865	39,473	24,490	26,438
2023	23,108	39,824	24,884	26,633
2024	23,378	40,162	25,463	26,827

TABLE C-4

**PJM LOCATIONAL DELIVERABILITY AREAS
SOUTHERN MID-ATLANTIC: BGE AND PEPCO
SEASONAL PEAKS - MW**

YEAR	SPRING (WK 14-19)	SUMMER (WK 20-39)	FALL (WK 40-45)	WINTER (WK 46-13)
2009	8,994	14,188	9,183	11,366
2010	9,119	14,404	9,315	11,454
2011	9,309	14,723	9,484	11,626
2012	9,507	14,915	9,802	11,785
2013	9,647	15,175	9,910	11,903
2014	9,784	15,392	10,027	12,026
2015	9,923	15,622	10,124	12,143
2016	10,054	15,791	10,173	12,276
2017	10,144	16,010	10,444	12,395
2018	10,362	16,204	10,669	12,520
2019	10,466	16,502	10,770	12,648
2020	10,620	16,753	10,862	12,776
2021	10,779	16,959	10,958	12,903
2022	10,867	17,122	11,052	13,042
2023	10,964	17,347	11,307	13,154
2024	11,174	17,631	11,529	13,279

TABLE C-5

**PJM LOCATIONAL DELIVERABILITY AREAS
MID-ATLANTIC and APS: AE, APS, BGE, DPL, JCPL, METED, PECO, PENLC, PEPCO, PL, PS, RECO, and UGI
SEASONAL PEAKS - MW**

YEAR	SPRING (WK 14-19)	SUMMER (WK 20-39)	FALL (WK 40-45)	WINTER (WK 46-13)
2009	44,615	67,942	44,622	54,545
2010	44,962	68,871	45,235	54,747
2011	45,739	70,839	46,640	55,744
2012	47,173	72,170	48,184	57,032
2013	48,084	73,444	48,961	57,928
2014	48,943	74,471	49,491	58,562
2015	49,657	75,753	49,915	59,181
2016	49,823	76,676	50,344	59,775
2017	50,393	77,520	51,197	60,414
2018	51,055	78,157	52,100	60,957
2019	51,604	79,007	52,598	61,476
2020	52,531	80,129	52,898	61,972
2021	53,050	80,932	53,242	62,525
2022	53,032	81,744	53,662	63,123
2023	53,597	82,483	54,512	63,579
2024	54,152	83,100	55,179	64,035

THIS PAGE INTENTIONALLY LEFT BLANK

Table D-1
SUMMER EXTREME WEATHER (90/10) PEAK LOAD
FOR EACH PJM MID-ATLANTIC ZONE AND GEOGRAPHIC REGION (MW)
2009-2024

	2009	2010	2011	2012	2013	2014	2015	2016	2017	2018	2019	2020	2021	2022	2023	2024
AE	2,846	2,921	3,145	3,292	3,417	3,479	3,532	3,582	3,629	3,684	3,725	3,763	3,806	3,844	3,881	3,922
BGE	7,538	7,712	7,934	8,047	8,163	8,296	8,456	8,619	8,774	8,931	9,087	9,241	9,411	9,571	9,723	9,873
DPL	4,170	4,202	4,340	4,499	4,620	4,715	4,798	4,880	4,955	5,039	5,140	5,250	5,344	5,434	5,515	5,605
JCPL	6,724	6,857	7,086	7,290	7,472	7,638	7,717	7,802	7,922	7,972	8,072	8,182	8,236	8,321	8,426	8,467
METED	2,963	3,004	3,093	3,186	3,255	3,294	3,328	3,360	3,394	3,425	3,455	3,477	3,501	3,522	3,543	3,568
PECO	8,881	8,878	9,102	9,326	9,472	9,581	9,679	9,766	9,858	9,933	10,021	10,095	10,157	10,210	10,260	10,305
PENLC	2,870	2,881	2,954	3,026	3,078	3,126	3,180	3,232	3,285	3,336	3,386	3,437	3,484	3,528	3,572	3,613
PEPCO	7,268	7,351	7,474	7,600	7,704	7,787	7,869	7,953	8,033	8,126	8,210	8,294	8,384	8,467	8,549	8,631
PL	7,355	7,403	7,552	7,732	7,867	7,958	8,036	8,070	8,130	8,193	8,254	8,321	8,346	8,374	8,401	8,447
PS	11,370	11,458	11,751	12,033	12,256	12,489	12,620	12,673	12,802	12,925	13,043	13,237	13,257	13,372	13,462	13,563
RECO	461	466	477	488	498	503	509	515	520	523	530	535	539	544	548	552
UGI	198	198	202	207	210	211	213	213	214	215	216	216	217	217	217	218
DIVERSITY (-)	192	198	153	310	122	137	189	75	67	387	89	182	135	147	115	45
PJM MID-ATLANTIC	62,452	63,133	64,957	66,416	67,890	68,940	69,748	70,590	71,449	71,915	73,050	73,866	74,547	75,257	75,982	76,719
FE/GPU	12,557	12,742	13,127	13,432	13,805	14,058	14,225	14,390	14,595	14,654	14,913	15,096	15,221	15,369	15,537	15,648
PLGRP	7,553	7,601	7,754	7,939	8,077	8,169	8,249	8,283	8,344	8,408	8,470	8,537	8,563	8,591	8,618	8,665

Table D-1
SUMMER EXTREME WEATHER (90/10) PEAK LOAD
FOR EACH PJM WESTERN AND PJM SOUTHERN ZONE, GEOGRAPHIC REGION AND RTO
2009-2024

	2009	2010	2011	2012	2013	2014	2015	2016	2017	2018	2019	2020	2021	2022	2023	2024
AEP	24,518	24,669	25,331	25,974	26,383	26,611	26,908	27,118	27,265	27,446	27,606	27,788	27,898	28,010	28,086	28,187
APS	8,774	8,952	9,198	9,403	9,528	9,635	9,744	9,852	9,959	10,079	10,181	10,305	10,434	10,557	10,677	10,786
COMED	23,785	24,213	25,242	26,470	27,056	27,473	27,869	28,303	28,620	28,959	29,282	29,542	29,825	30,019	30,164	30,336
DAY	3,504	3,523	3,663	3,840	3,910	3,937	3,967	3,998	4,026	4,052	4,064	4,074	4,091	4,105	4,115	4,123
DLCO	3,007	3,007	3,053	3,126	3,171	3,207	3,249	3,292	3,339	3,384	3,411	3,442	3,475	3,504	3,542	3,561
DIVERSITY (-)	744	811	790	700	659	618	784	781	702	752	733	805	837	751	719	699
PJM WESTERN	62,844	63,553	65,697	68,113	69,389	70,245	70,953	71,782	72,507	73,168	73,811	74,346	74,886	75,444	75,865	76,294
DOM	19,372	19,703	20,367	21,146	21,625	21,994	22,386	22,812	23,241	23,706	24,168	24,614	25,111	25,591	26,079	26,573
DIVERSITY (-)	1,999	1,938	2,096	2,011	2,257	2,356	2,295	2,441	2,460	2,315	2,476	2,503	2,557	2,642	2,684	2,689
PJM RTO	142,669	144,451	148,925	153,664	156,647	158,823	160,792	162,743	164,737	166,474	168,553	170,323	171,987	173,650	175,242	176,897

Table D-2

**WINTER EXTREME WEATHER (90/10) PEAK LOAD
FOR EACH PJM MID-ATLANTIC ZONE AND GEOGRAPHIC REGION (MW)
2008/09- 2023/24**

	08/09	09/10	10/11	11/12	12/13	13/14	14/15	15/16	16/17	17/18	18/19	19/20	20/21	21/22	22/23	23/24
AE	1,882	1,884	1,938	2,066	2,136	2,175	2,217	2,249	2,290	2,307	2,339	2,350	2,377	2,406	2,433	2,445
BGE	6,291	6,329	6,408	6,477	6,525	6,540	6,639	6,724	6,798	6,853	6,917	6,966	7,057	7,135	7,197	7,254
DPL	3,507	3,504	3,559	3,647	3,723	3,754	3,825	3,880	3,936	3,980	4,025	4,067	4,137	4,199	4,251	4,296
JCPL	4,117	4,159	4,240	4,355	4,463	4,466	4,562	4,619	4,678	4,713	4,767	4,772	4,832	4,877	4,924	4,948
METED	2,645	2,647	2,698	2,762	2,819	2,836	2,878	2,908	2,942	2,961	2,984	2,987	3,013	3,039	3,055	3,065
PECO	6,785	6,678	6,748	6,914	6,991	7,014	7,123	7,203	7,314	7,356	7,365	7,378	7,462	7,524	7,571	7,589
PENLC	2,874	2,863	2,909	2,985	3,045	3,071	3,133	3,193	3,260	3,303	3,355	3,387	3,449	3,505	3,550	3,584
PEPCO	5,702	5,739	5,811	5,909	5,992	6,012	6,107	6,181	6,269	6,304	6,368	6,408	6,493	6,578	6,642	6,679
PL	7,521	7,510	7,582	7,704	7,793	7,789	7,893	7,959	8,029	8,049	8,087	8,072	8,143	8,182	8,224	8,217
PS	7,180	7,229	7,334	7,478	7,639	7,625	7,756	7,831	7,922	7,972	8,054	8,052	8,127	8,195	8,257	8,294
RECO	242	244	246	248	250	252	254	256	258	260	262	264	266	268	271	273
UGI	207	205	207	210	212	211	214	215	217	217	217	217	218	219	219	219
DIVERSITY (-)	592	530	381	212	415	77	343	474	457	468	515	336	503	474	472	509
PJM MID-ATLANTIC	48,361	48,461	49,299	50,543	51,173	51,668	52,258	52,744	53,456	53,807	54,225	54,584	55,071	55,653	56,122	56,354
FE/GPU	9,617	9,635	9,815	10,078	10,307	10,373	10,573	10,689	10,826	10,955	11,067	11,133	11,254	11,362	11,465	11,565
PLGRP	7,725	7,711	7,789	7,914	8,005	8,000	8,107	8,173	8,239	8,266	8,303	8,289	8,354	8,386	8,431	8,436

Table D-2

**WINTER EXTREME WEATHER (90/10) PEAK LOAD
FOR EACH PJM WESTERN AND PJM SOUTHERN ZONE, GEOGRAPHIC REGION AND RTO (MW)
2008/09- 2023/24**

	08/09	09/10	10/11	11/12	12/13	13/14	14/15	15/16	16/17	17/18	18/19	19/20	20/21	21/22	22/23	23/24
AEP	24,709	24,550	24,730	25,118	25,471	25,438	25,804	25,903	26,091	26,128	26,231	26,210	26,384	26,528	26,592	26,584
APS	8,743	8,850	9,029	9,205	9,330	9,337	9,528	9,638	9,747	9,812	9,894	9,923	10,120	10,250	10,341	10,412
COMED	16,177	16,115	16,503	17,131	17,740	17,806	18,147	18,372	18,678	18,828	19,057	19,089	19,272	19,472	19,627	19,664
DAY	3,130	3,097	3,126	3,235	3,304	3,306	3,351	3,376	3,394	3,403	3,416	3,408	3,437	3,444	3,454	3,452
DLCO	2,226	2,214	2,220	2,237	2,272	2,255	2,284	2,301	2,333	2,343	2,368	2,353	2,374	2,392	2,409	2,415
DIVERSITY (-)	985	872	999	1,095	1,250	750	795	952	1,374	1,283	1,301	1,129	1,030	1,211	1,443	1,347
PJM WESTERN	54,000	53,954	54,609	55,831	56,867	57,392	58,319	58,638	58,869	59,231	59,665	59,854	60,557	60,875	60,980	61,180
DOM	17,916	17,999	18,313	18,817	19,255	19,392	19,776	20,097	20,405	20,660	20,975	21,223	21,605	21,960	22,280	22,570
DIVERSITY (-)	887	860	755	822	736	1,798	1,168	1,097	1,159	985	1,055	1,882	1,215	1,353	1,271	1,125
PJM RTO	119,390	119,554	121,466	124,369	126,559	126,654	129,185	130,382	131,571	132,713	133,810	133,779	136,018	137,135	138,111	138,979

Table E-1

**ANNUAL NET ENERGY (GWh) AND GROWTH RATES FOR
EACH PJM MID-ATLANTIC ZONE AND GEOGRAPHIC REGION
2009-2019**

	ESTIMATED												Annual Growth Rate
	2008	2009	2010	2011	2012	2013	2014	2015	2016	2017	2018	2019	(10 yr)
AE	11,435	11,503	11,765	12,577	13,366	13,861	14,190	14,408	14,659	14,841	15,055	15,229	2.8%
	%	0.6%	2.3%	6.9%	6.3%	3.7%	2.4%	1.5%	1.7%	1.2%	1.4%	1.2%	
BGE	34,402	34,928	35,520	36,442	37,054	37,360	37,944	38,557	39,308	39,824	40,450	41,052	1.6%
	%	1.5%	1.7%	2.6%	1.7%	0.8%	1.6%	1.6%	1.9%	1.3%	1.6%	1.5%	
DPL	19,094	19,136	19,230	19,735	20,397	20,788	21,161	21,453	21,805	22,062	22,401	22,736	1.7%
	%	0.2%	0.5%	2.6%	3.4%	1.9%	1.8%	1.4%	1.6%	1.2%	1.5%	1.5%	
JCPL	24,629	25,012	25,571	26,445	27,469	28,020	28,503	28,923	29,426	29,744	30,122	30,438	2.0%
	%	1.6%	2.2%	3.4%	3.9%	2.0%	1.7%	1.5%	1.7%	1.1%	1.3%	1.0%	
METED	16,142	15,966	16,153	16,638	17,191	17,491	17,759	17,958	18,201	18,332	18,514	18,634	1.6%
	%	-1.1%	1.2%	3.0%	3.3%	1.7%	1.5%	1.1%	1.4%	0.7%	1.0%	0.6%	
PECO	41,992	41,075	40,962	42,061	43,377	43,954	44,557	45,056	45,684	46,047	46,515	46,876	1.3%
	%	-2.2%	-0.3%	2.7%	3.1%	1.3%	1.4%	1.1%	1.4%	0.8%	1.0%	0.8%	
PENLC	18,394	18,149	18,252	18,778	19,426	19,786	20,197	20,604	21,096	21,453	21,882	22,275	2.1%
	%	-1.3%	0.6%	2.9%	3.5%	1.9%	2.1%	2.0%	2.4%	1.7%	2.0%	1.8%	
PEPCO	32,230	33,063	33,391	33,951	34,655	35,006	35,404	35,757	36,241	36,518	36,913	37,286	1.2%
	%	2.6%	1.0%	1.7%	2.1%	1.0%	1.1%	1.0%	1.4%	0.8%	1.1%	1.0%	
PL	42,153	41,629	41,822	42,723	43,879	44,434	44,980	45,392	45,898	46,127	46,483	46,722	1.2%
	%	-1.2%	0.5%	2.2%	2.7%	1.3%	1.2%	0.9%	1.1%	0.5%	0.8%	0.5%	
PS	47,535	48,556	49,328	50,625	52,109	52,845	53,576	54,201	54,988	55,435	55,999	56,459	1.5%
	%	2.1%	1.6%	2.6%	2.9%	1.4%	1.4%	1.2%	1.5%	0.8%	1.0%	0.8%	
RECO	1,577	1,587	1,609	1,650	1,694	1,717	1,741	1,761	1,785	1,799	1,819	1,833	1.5%
	%	0.6%	1.4%	2.5%	2.7%	1.4%	1.4%	1.1%	1.4%	0.8%	1.1%	0.8%	
UGI	1,071	1,056	1,057	1,078	1,106	1,121	1,129	1,138	1,147	1,150	1,154	1,156	0.9%
	%	-1.4%	0.1%	2.0%	2.6%	1.4%	0.7%	0.8%	0.8%	0.3%	0.3%	0.2%	
PJM MID-ATLANTIC	290,655	291,660	294,660	302,703	311,723	316,383	321,141	325,208	330,238	333,332	337,307	340,696	1.6%
	%	0.3%	1.0%	2.7%	3.0%	1.5%	1.5%	1.3%	1.5%	0.9%	1.2%	1.0%	
FE/GPU	59,166	59,127	59,976	61,861	64,086	65,297	66,459	67,485	68,723	69,529	70,518	71,347	1.9%
	%	-0.1%	1.4%	3.1%	3.6%	1.9%	1.8%	1.5%	1.8%	1.2%	1.4%	1.2%	
PLGRP	43,224	42,685	42,879	43,801	44,985	45,555	46,109	46,530	47,045	47,277	47,637	47,878	1.2%
	%	-1.2%	0.5%	2.2%	2.7%	1.3%	1.2%	0.9%	1.1%	0.5%	0.8%	0.5%	

Note: Estimated 2008 includes weather-normalized data through August.

Table E-1 (Continued)

ANNUAL NET ENERGY (GWh) AND GROWTH RATES FOR
EACH PJM MID-ATLANTIC ZONE AND GEOGRAPHIC REGION
2020-2024

		2020	2021	2022	2023	2024	Annual Growth Rate (15 yr)
AE		15,445	15,577	15,747	15,906	16,122	2.3%
	%	1.4%	0.9%	1.1%	1.0%	1.4%	
BGE		41,814	42,335	42,985	43,613	44,357	1.6%
	%	1.9%	1.2%	1.5%	1.5%	1.7%	
DPL		23,167	23,443	23,792	24,139	24,560	1.7%
	%	1.9%	1.2%	1.5%	1.5%	1.7%	
JCPL		30,851	31,093	31,420	31,716	32,108	1.7%
	%	1.4%	0.8%	1.1%	0.9%	1.2%	
METED		18,851	18,933	19,053	19,157	19,328	1.3%
	%	1.2%	0.4%	0.6%	0.5%	0.9%	
PECO		47,400	47,588	47,877	48,121	48,499	1.1%
	%	1.1%	0.4%	0.6%	0.5%	0.8%	
PENLC		22,757	23,075	23,442	23,784	24,194	1.9%
	%	2.2%	1.4%	1.6%	1.5%	1.7%	
PEPCO		37,791	38,073	38,467	38,833	39,309	1.2%
	%	1.4%	0.7%	1.0%	1.0%	1.2%	
PL		47,173	47,278	47,504	47,678	48,003	1.0%
	%	1.0%	0.2%	0.5%	0.4%	0.7%	
PS		57,173	57,503	58,008	58,440	59,027	1.3%
	%	1.3%	0.6%	0.9%	0.7%	1.0%	
RECO		1,857	1,871	1,888	1,901	1,919	1.3%
	%	1.3%	0.8%	0.9%	0.7%	0.9%	
UGI		1,164	1,162	1,164	1,165	1,168	0.7%
	%	0.7%	-0.2%	0.2%	0.1%	0.3%	
PJM MID-ATLANTIC		345,443	347,931	351,347	354,453	358,594	1.4%
	%	1.4%	0.7%	1.0%	0.9%	1.2%	
FE/GPU		72,459	73,101	73,915	74,657	75,630	1.7%
	%	1.6%	0.9%	1.1%	1.0%	1.3%	
PLGRP		48,337	48,440	48,668	48,843	49,171	0.9%
	%	1.0%	0.2%	0.5%	0.4%	0.7%	

Table E-1

**ANNUAL NET ENERGY (GWh) AND GROWTH RATES FOR
EACH PJM WESTERN AND PJM SOUTHERN ZONE, GEOGRAPHIC REGION AND RTO
2009-2019**

	ESTIMATED 2008	2009	2010	2011	2012	2013	2014	2015	2016	2017	2018	2019	Annual Growth Rate (10 yr)
AEP	144,108	142,006	142,454	145,290	149,273	150,628	151,951	153,121	154,634	155,116	156,021	156,495	1.0%
%		-1.5%	0.3%	2.0%	2.7%	0.9%	0.9%	0.8%	1.0%	0.3%	0.6%	0.3%	
APS	48,864	49,309	50,176	51,468	52,674	53,234	53,882	54,420	55,141	55,553	56,155	56,686	1.4%
%		0.9%	1.8%	2.6%	2.3%	1.1%	1.2%	1.0%	1.3%	0.7%	1.1%	0.9%	
COMED	104,322	102,616	104,175	109,033	115,402	118,725	121,300	123,347	125,647	127,045	128,730	130,337	2.4%
%		-1.6%	1.5%	4.7%	5.8%	2.9%	2.2%	1.7%	1.9%	1.1%	1.3%	1.2%	
DAY	18,655	17,979	18,014	18,733	19,718	20,085	20,312	20,484	20,710	20,799	20,920	20,967	1.5%
%		-3.6%	0.2%	4.0%	5.3%	1.9%	1.1%	0.8%	1.1%	0.4%	0.6%	0.2%	
DLCO	14,857	14,615	14,582	14,814	15,190	15,368	15,587	15,792	16,047	16,211	16,412	16,573	1.3%
%		-1.6%	-0.2%	1.6%	2.5%	1.2%	1.4%	1.3%	1.6%	1.0%	1.2%	1.0%	
PJM WESTERN	330,805	326,525	329,401	339,338	352,257	358,040	363,032	367,164	372,179	374,724	378,238	381,058	1.6%
%		-1.3%	0.9%	3.0%	3.8%	1.6%	1.4%	1.1%	1.4%	0.7%	0.9%	0.7%	
DOM	94,738	94,051	95,372	98,382	102,277	104,324	106,246	108,048	110,327	111,987	114,075	116,153	2.1%
%		-0.7%	1.4%	3.2%	4.0%	2.0%	1.8%	1.7%	2.1%	1.5%	1.9%	1.8%	
PJM RTO	716,198	712,236	719,433	740,423	766,257	778,747	790,419	800,420	812,744	820,043	829,620	837,907	1.6%
%		-0.6%	1.0%	2.9%	3.5%	1.6%	1.5%	1.3%	1.5%	0.9%	1.2%	1.0%	

Note: Estimated 2008 includes weather-normalized data through August.

Table E-1 (Continued)

**ANNUAL NET ENERGY (GWh) AND GROWTH RATES FOR
EACH PJM WESTERN AND PJM SOUTHERN ZONE, GEOGRAPHIC REGION AND RTO
2020-2024**

		2020	2021	2022	2023	2024	Annual Growth Rate (15 yr)
AEP		157,804	158,006	158,655	159,115	159,966	0.8%
	%	0.8%	0.1%	0.4%	0.3%	0.5%	
APS		57,539	58,017	58,673	59,295	60,082	1.3%
	%	1.5%	0.8%	1.1%	1.1%	1.3%	
COMED		132,435	133,386	134,446	135,214	136,311	1.9%
	%	1.6%	0.7%	0.8%	0.6%	0.8%	
DAY		21,143	21,167	21,245	21,284	21,360	1.2%
	%	0.8%	0.1%	0.4%	0.2%	0.4%	
DLCO		16,802	16,912	17,063	17,198	17,374	1.2%
	%	1.4%	0.7%	0.9%	0.8%	1.0%	
PJM WESTERN		385,723	387,488	390,082	392,106	395,093	1.3%
	%	1.2%	0.5%	0.7%	0.5%	0.8%	
DOM		118,677	120,539	122,817	125,060	127,671	2.1%
	%	2.2%	1.6%	1.9%	1.8%	2.1%	
PJM RTO		849,843	855,958	864,246	871,619	881,358	1.4%
	%	1.4%	0.7%	1.0%	0.9%	1.1%	

Table E-2

**MONTHLY NET ENERGY FORECAST (GWh) FOR EACH
PJM MID-ATLANTIC ZONE AND GEOGRAPHIC REGION**

	AE	BGE	DPL	JCPL	METED	PECO	PENLC	PEPCO	PL	PS	RECO	UGI	PJM MID-ATLANTIC
Jan 2009	983	3,245	1,773	2,157	1,464	3,676	1,671	2,947	3,999	4,064	130	106	26,215
Feb 2009	869	2,841	1,572	1,896	1,304	3,250	1,497	2,595	3,533	3,617	114	93	23,181
Mar 2009	885	2,802	1,543	1,963	1,357	3,352	1,580	2,570	3,606	3,821	122	93	23,694
Apr 2009	815	2,486	1,365	1,799	1,215	3,040	1,422	2,353	3,161	3,587	115	80	21,438
May 2009	860	2,570	1,410	1,884	1,248	3,148	1,453	2,477	3,202	3,761	124	79	22,216
Jun 2009	999	3,025	1,631	2,199	1,319	3,544	1,444	2,991	3,317	4,318	146	81	25,014
Jul 2009	1,251	3,502	1,919	2,651	1,460	4,083	1,537	3,404	3,662	5,024	172	91	28,756
Aug 2009	1,225	3,411	1,882	2,538	1,426	3,959	1,535	3,292	3,594	4,856	163	88	27,969
Sep 2009	932	2,761	1,495	1,984	1,233	3,226	1,437	2,712	3,193	3,942	127	77	23,119
Oct 2009	868	2,580	1,418	1,916	1,268	3,160	1,486	2,454	3,247	3,823	123	80	22,423
Nov 2009	851	2,622	1,443	1,889	1,251	3,118	1,463	2,445	3,292	3,708	120	86	22,288
Dec 2009	965	3,083	1,685	2,136	1,421	3,519	1,624	2,823	3,823	4,035	131	102	25,347
	AE	BGE	DPL	JCPL	METED	PECO	PENLC	PEPCO	PL	PS	RECO	UGI	MID-ATLANTIC
Jan 2010	990	3,265	1,768	2,189	1,465	3,615	1,663	2,962	3,979	4,105	131	105	26,237
Feb 2010	876	2,867	1,570	1,928	1,307	3,203	1,492	2,616	3,523	3,662	115	93	23,252
Mar 2010	900	2,846	1,551	2,010	1,365	3,315	1,578	2,609	3,609	3,888	124	93	23,888
Apr 2010	832	2,526	1,367	1,839	1,221	3,010	1,418	2,374	3,157	3,640	116	79	21,579
May 2010	878	2,613	1,413	1,926	1,257	3,121	1,452	2,501	3,203	3,819	125	78	22,386
Jun 2010	1,018	3,075	1,635	2,247	1,329	3,516	1,445	3,015	3,322	4,385	148	81	25,216
Jul 2010	1,279	3,559	1,923	2,700	1,473	4,069	1,542	3,425	3,669	5,080	174	91	28,984
Aug 2010	1,256	3,486	1,897	2,601	1,456	3,975	1,558	3,334	3,640	4,950	166	89	28,408
Sep 2010	959	2,815	1,503	2,031	1,252	3,230	1,450	2,739	3,218	4,005	129	77	23,408
Oct 2010	900	2,639	1,435	1,968	1,292	3,192	1,508	2,482	3,281	3,896	125	81	22,799
Nov 2010	879	2,680	1,460	1,939	1,286	3,158	1,495	2,472	3,354	3,782	123	87	22,715
Dec 2010	998	3,149	1,708	2,193	1,450	3,558	1,651	2,862	3,867	4,116	133	103	25,788
	AE	BGE	DPL	JCPL	METED	PECO	PENLC	PEPCO	PL	PS	RECO	UGI	MID-ATLANTIC
Jan 2011	1,028	3,348	1,807	2,253	1,507	3,693	1,704	3,018	4,054	4,209	134	107	26,862
Feb 2011	909	2,932	1,600	1,981	1,338	3,260	1,522	2,653	3,574	3,739	117	94	23,719
Mar 2011	937	2,918	1,582	2,069	1,399	3,378	1,613	2,646	3,667	3,973	127	94	24,403
Apr 2011	890	2,596	1,401	1,902	1,258	3,090	1,457	2,409	3,218	3,735	119	81	22,156
May 2011	941	2,693	1,451	1,997	1,298	3,211	1,497	2,546	3,283	3,924	129	80	23,050
Jun 2011	1,084	3,163	1,676	2,323	1,369	3,610	1,486	3,059	3,395	4,496	151	82	25,894
Jul 2011	1,372	3,645	1,970	2,779	1,509	4,164	1,581	3,466	3,733	5,188	178	93	29,678
Aug 2011	1,352	3,588	1,953	2,699	1,510	4,105	1,615	3,401	3,746	5,104	172	91	29,336
Sep 2011	1,043	2,893	1,545	2,107	1,291	3,328	1,494	2,786	3,291	4,116	132	79	24,105
Oct 2011	986	2,706	1,482	2,047	1,336	3,299	1,561	2,530	3,370	4,012	129	83	23,541
Nov 2011	959	2,747	1,509	2,017	1,330	3,262	1,546	2,524	3,440	3,899	126	89	23,448
Dec 2011	1,076	3,213	1,759	2,271	1,493	3,661	1,702	2,913	3,952	4,230	136	105	26,511

Table E-2

MONTHLY NET ENERGY FORECAST (GWh) FOR EACH
PJM WESTERN AND PJM SOUTHERN ZONE, GEOGRAPHIC REGION AND RTO

	AEP	APS	COMED	DAY	DLCO	PJM WESTERN	DOM	PJM RTO
Jan 2009	13,278	4,694	8,978	1,630	1,274	29,854	8,804	64,873
Feb 2009	11,732	4,159	7,984	1,442	1,135	26,452	7,684	57,317
Mar 2009	11,949	4,221	8,324	1,494	1,197	27,185	7,491	58,370
Apr 2009	10,811	3,725	7,680	1,354	1,108	24,678	6,650	52,766
May 2009	11,140	3,785	7,973	1,399	1,165	25,462	6,958	54,636
Jun 2009	11,619	3,955	8,709	1,525	1,256	27,064	8,271	60,349
Jul 2009	12,677	4,357	10,126	1,700	1,409	30,269	9,319	68,344
Aug 2009	12,558	4,307	9,756	1,672	1,375	29,668	9,056	66,693
Sep 2009	11,013	3,773	8,105	1,406	1,166	25,463	7,483	56,065
Oct 2009	11,224	3,851	8,104	1,408	1,157	25,744	6,926	55,093
Nov 2009	11,220	3,926	7,972	1,386	1,131	25,635	7,061	54,984
Dec 2009	12,785	4,556	8,905	1,563	1,242	29,051	8,348	62,746
Jan 2010	13,213	4,752	8,987	1,607	1,261	29,820	8,848	64,905
Feb 2010	11,695	4,217	8,008	1,424	1,126	26,470	7,737	57,459
Mar 2010	11,963	4,296	8,385	1,479	1,190	27,313	7,581	58,782
Apr 2010	10,806	3,786	7,764	1,345	1,099	24,800	6,731	53,110
May 2010	11,150	3,850	8,064	1,393	1,158	25,615	7,047	55,048
Jun 2010	11,631	4,022	8,812	1,520	1,249	27,234	8,368	60,818
Jul 2010	12,679	4,418	10,283	1,698	1,404	30,482	9,438	68,904
Aug 2010	12,665	4,401	9,967	1,690	1,381	30,104	9,215	67,727
Sep 2010	11,062	3,841	8,270	1,413	1,167	25,753	7,605	56,766
Oct 2010	11,316	3,921	8,322	1,433	1,161	26,153	7,064	56,016
Nov 2010	11,375	4,024	8,189	1,425	1,139	26,152	7,218	56,085
Dec 2010	12,899	4,648	9,124	1,587	1,247	29,505	8,520	63,813
Jan 2011	13,435	4,884	9,306	1,654	1,275	30,554	9,078	66,494
Feb 2011	11,846	4,315	8,267	1,457	1,134	27,019	7,917	58,655
Mar 2011	12,127	4,400	8,675	1,519	1,200	27,921	7,774	60,098
Apr 2011	10,981	3,875	8,121	1,395	1,114	25,486	6,932	54,574
May 2011	11,380	3,957	8,457	1,452	1,176	26,422	7,279	56,751
Jun 2011	11,852	4,124	9,206	1,576	1,266	28,024	8,610	62,528
Jul 2011	12,895	4,510	10,718	1,759	1,424	31,306	9,715	70,699
Aug 2011	12,996	4,533	10,504	1,773	1,412	31,218	9,542	70,096
Sep 2011	11,302	3,939	8,693	1,477	1,188	26,599	7,864	58,568
Oct 2011	11,608	4,028	8,816	1,512	1,188	27,152	7,344	58,037
Nov 2011	11,665	4,136	8,673	1,501	1,165	27,140	7,504	58,092
Dec 2011	13,203	4,767	9,597	1,658	1,272	30,497	8,823	65,831

Table E-3

**MONTHLY NET ENERGY FORECAST (GWh)
FOR FE/GPU AND PLGRP**

	FE/GPU	PLGRP
Jan 2009	5,292	4,105
Feb 2009	4,697	3,626
Mar 2009	4,900	3,699
Apr 2009	4,436	3,241
May 2009	4,585	3,281
Jun 2009	4,962	3,398
Jul 2009	5,648	3,753
Aug 2009	5,499	3,682
Sep 2009	4,654	3,270
Oct 2009	4,670	3,327
Nov 2009	4,603	3,378
Dec 2009	5,181	3,925
	FE/GPU	PLGRP
Jan 2010	5,317	4,084
Feb 2010	4,727	3,616
Mar 2010	4,953	3,702
Apr 2010	4,478	3,236
May 2010	4,635	3,281
Jun 2010	5,021	3,403
Jul 2010	5,715	3,760
Aug 2010	5,615	3,729
Sep 2010	4,733	3,295
Oct 2010	4,768	3,362
Nov 2010	4,720	3,441
Dec 2010	5,294	3,970
	FE/GPU	PLGRP
Jan 2011	5,464	4,161
Feb 2011	4,841	3,668
Mar 2011	5,081	3,761
Apr 2011	4,617	3,299
May 2011	4,792	3,363
Jun 2011	5,178	3,477
Jul 2011	5,869	3,826
Aug 2011	5,824	3,837
Sep 2011	4,892	3,370
Oct 2011	4,944	3,453
Nov 2011	4,893	3,529
Dec 2011	5,466	4,057

Note: FE/GPU contains JCPL, METED, and PENLC zones; PLGRP contains PL and UGI zones.

TABLE F-1
PJM RTO HISTORICAL PEAKS
(MW)

SUMMER

YEAR	NORMALIZED BASE	NORMALIZED COOLING	NORMALIZED TOTAL	UNRESTRICTED PEAK	PEAK DATE/TIME
1998	72,950	38,170	111,120	114,996	Tuesday 07/21/1998 17:00
1999	73,990	42,980	116,970	121,655	Tuesday 07/06/1999 17:00
2000	76,300	40,080	116,380	114,178	Wednesday 08/09/2000 17:00
2001	75,990	45,080	121,070	131,116	Thursday 08/09/2001 16:00
2002	77,140	48,120	125,260	130,360	Thursday 08/01/2002 17:00
2003	77,650	46,700	124,350	126,332	Thursday 08/21/2003 17:00
2004			130,645	120,235	Wednesday 06/09/2004 17:00
2005			133,550	134,219	Tuesday 07/26/2005 16:00
2006			134,905	145,951	Wednesday 08/02/2006 17:00
2007			136,095	140,948	Wednesday 08/08/2007 16:00
2008			136,315	130,792	Monday 06/09/2008 17:00

WINTER

YEAR	NORMALIZED BASE	NORMALIZED HEATING	NORMALIZED TOTAL	UNRESTRICTED PEAK	PEAK DATE/TIME
97/98				88,970	Wednesday 01/14/1998 19:00
98/99				99,982	Tuesday 01/05/1999 19:00
99/00				102,359	Thursday 01/27/2000 20:00
00/01				101,717	Wednesday 12/20/2000 19:00
01/02				97,294	Thursday 01/03/2002 19:00
02/03				112,755	Thursday 01/23/2003 19:00
03/04			108,110	106,760	Monday 01/26/2004 19:00
04/05			110,250	114,061	Monday 12/20/2004 19:00
05/06			111,745	110,415	Wednesday 12/14/2005 19:00
06/07			112,455	118,800	Monday 02/05/2007 20:00
07/08			113,185	111,724	Thursday 01/03/2008 19:00

Notes: Normalized values for 1998 - 2003 are calculated by PJM staff using the bottom-up coincident peak weather-normalization methodology.
Normalized values for 2004 - 2008 are calculated by PJM staff using a methodology consistent with the PJM Load Forecast Model.
All times are shown in hour ending Eastern Prevailing Time.

TABLE F-2

**PJM RTO HISTORICAL NET ENERGY
(GWH)**

YEAR	ENERGY	GROWTH RATE
1998	620,061	0.8%
1999	636,404	2.6%
2000	651,190	2.3%
2001	651,319	0.0%
2002	673,526	3.4%
2003	674,471	0.1%
2004	689,008	2.2%
2005	682,441	-1.0%
2006	694,989	1.8%
2007	724,541	4.3%

Note: All historic net energy values reflect the membership of the PJM RTO as of December 31, 2008.

Table G-1

**ANNUALIZED AVERAGE GROWTH OF GROSS METROPOLITAN PRODUCT
FOR EACH PJM ZONE AND RTO**

	5-Year (2009-14)	10-Year (2009-19)	15-Year (2009-24)
AE	4.3%	2.9%	2.3%
BGE	3.1%	3.0%	2.8%
DPL	3.7%	3.1%	2.9%
JCPL	3.2%	2.4%	2.0%
METED	2.2%	1.6%	1.3%
PECO	1.8%	1.4%	1.2%
PENLC	1.8%	1.8%	1.6%
PEPCO	3.1%	2.7%	2.5%
PL	1.9%	1.4%	1.1%
PS	3.3%	2.5%	2.1%
RECO	3.3%	2.6%	2.2%
UGI	1.5%	1.0%	0.7%
AEP	2.5%	1.7%	1.4%
APS	2.7%	2.1%	1.9%
COMED	3.3%	2.4%	1.9%
DAY	2.2%	1.4%	1.0%
DLCO	2.0%	1.9%	1.7%
DOM	2.9%	2.5%	2.4%
PJM RTO	2.9%	2.3%	1.9%

Source: Moody's Economy.com, December, 2008

Note: Values presented are annualized compound average growth rates.