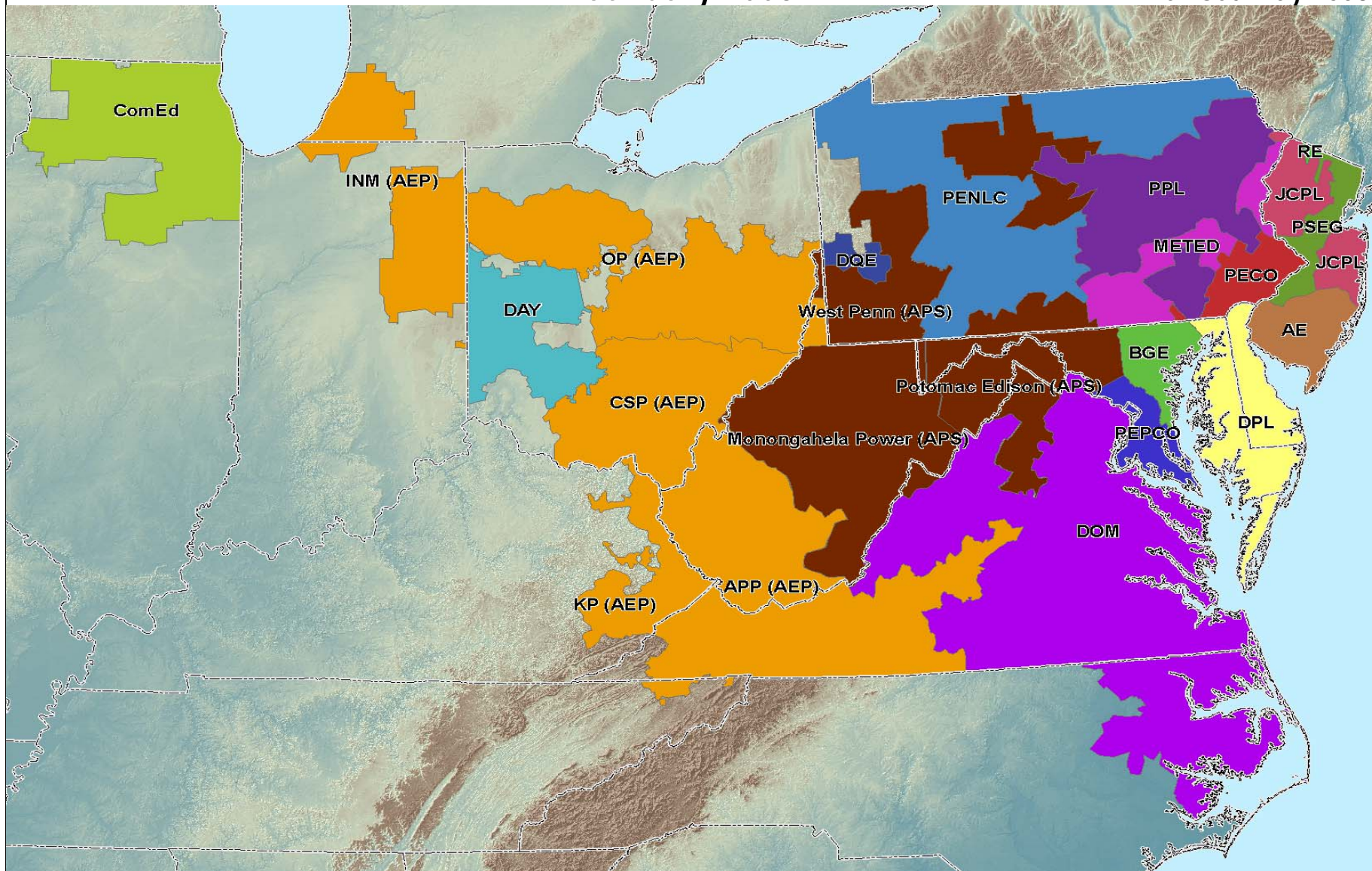


# PJM Load Forecast Report January 2008

revised May 2008



Prepared by PJM Capacity Adequacy Planning Department



## TABLE OF CONTENTS

	TABLE NUMBER	CHART PAGE	TABLE PAGE
EXECUTIVE SUMMARY			1
FORECAST COMPARISON:			
Summer Geographic Zone and PJM RTO – Comparison to Prior Peak Forecasts	A-1		23
Winter Geographic Zone and PJM RTO – Comparison to Prior Peak Forecasts	A-2		25
PEAK LOAD FORECAST AND ANNUAL GROWTH RATES:			
Seasonal Unrestricted PJM Peak Forecast			27
Summer Peak Forecasts and Growth Rates of each Geographic Zone and Total PJM	B-1	2, 4-22	29
Winter Peak Forecasts and Growth Rates of each Geographic Zone and Total PJM	B-2	3, 4-22	33
Spring Peak Forecasts of each Geographic Zone and Total PJM	B-3		37
Fall Peak Forecasts of each Geographic Zone and Total PJM	B-4		39
Monthly Peak Forecasts of each Geographic Zone and PJM Totals	B-5		41
Monthly Peak Forecasts of FE/GPU and PLGrp	B-6		43
Active Load Management in Planning Placed Under PJM Coordination by Geographic Zone	B-7		44
Summer Coincident Peak Load Forecasts of each Geographic Zone, Load Deliverability Area and Total PJM (RPM Forecast)	B-8		46
LOAD DELIVERABILITY AREA SEASONAL PEAKS:			
Central Mid-Atlantic: BGE, MetEd, PEPCO, PL and UGI Seasonal Peaks	C-1		47

	<b>TABLE NUMBER</b>	<b>CHART PAGE</b>	<b>TABLE PAGE</b>
Western Mid-Atlantic: MetEd, PENLC, PL and UGI Seasonal Peaks	C-2		48
Eastern Mid-Atlantic: AE, DPL, JCPL, PECO, PS and RECO Seasonal Peaks	C-3		49
Southern Mid-Atlantic: BGE and PEPCO Seasonal Peaks	C-4		50
Mid-Atlantic and APS: AE, APS, BGE, DPL, JCPL, MetEd, PECO, PNLC, PEPCO, PS, RECO and UGI Seasonal Peaks	C-5		51
<b>EXTREME WEATHER (90/10) PEAK LOAD FORECASTS:</b>			
Summer 90/10 Peak Forecasts of each Geographic Zone and Total PJM	D-1		52
Winter 90/10 Peak Forecasts of each Geographic Zone and Total PJM	D-2		54
<b>NET ENERGY FORECAST AND ANNUAL GROWTH RATES:</b>			
Annual Net Energy Forecasts of each Geographic Zone and PJM Totals	E-1		56
Monthly Net Energy Forecasts of each Geographic Zone and PJM Totals	E-2		60
Monthly Net Energy Forecasts of FE/GPU and PLGrp	E-3		62
<b>PJM HISTORICAL DATA:</b>			
Historical RTO Summer and Winter Peaks	F-1		63
Historical RTO Net Energy	F-2		64

## TERMS AND ABBREVIATIONS USED IN THIS REPORT

AE	Atlantic Electric zone (part of Pepco Holdings, Inc)
AEP	American Electric Power zone (incorporated 10/1/2004)
APP	Appalachian Power, sub-zone of AEP
APS	Allegheny Power zone (incorporated 4/1/2002)
Base Load	Average peak load on non-holiday weekdays with no heating or cooling load. Base load is insensitive to weather.
BGE	Baltimore Gas & Electric zone
COMED	Commonwealth Edison zone (incorporated 5/1/2004)
Contractually Interruptible	Load Management from customers responding to direction from a control center
Cooling Load	The weather-sensitive portion of summer peak load
CSP	Columbus Southern Power, sub-zone of AEP
Direct Control	Load Management achieved directly by a signal from a control center
DAY	Dayton Power & Light zone (incorporated 10/1/2004)
DLCO	Duquesne Lighting Company zone (incorporated 1/1/2005)
DPL	Delmarva Power & Light zone (part of Pepco Holdings, Inc)
FE/GPU	The combination of First Energy's Jersey Central Power & Light, Metropolitan Edison, and Pennsylvania Electric zones (formerly GPU)
Heating Load	The weather-sensitive portion of winter peak load
INM	Indiana Michigan Power, sub-zone of AEP
JCPL	Jersey Central Power & Light zone
KP	Kentucky Power, sub-zone of AEP
METED	Metropolitan Edison zone
MP	Monongahela Power, sub-zone of APS
Net Energy	Net Energy for Load, measured as net generation of main generating units plus energy receipts minus energy deliveries
OP	Ohio Power, sub-zone of AEP

PECO	PECO Energy zone
PED	Potomac Edison, sub-zone of APS
PEPCO	Potomac Electric Power zone (part of Pepco Holdings, Inc)
PL	PPL Electric Utilities, sub-zone of PLGroup
PLGroup/PLGRP	Pennsylvania Power & Light zone
PENLC	Pennsylvania Electric zone
PS	Public Service Electric & Gas zone
RECO	Rockland Electric (East) zone (incorporated 3/1/2002)
UGI	UGI Utilities, sub-zone of PLGroup
WP	West Penn Power, sub-zone of APS
Zone	Areas within the PJM Control Area, as defined in the PJM Reliability Assurance Agreement

# 2008 PJM LOAD REPORT

## **EXECUTIVE SUMMARY**

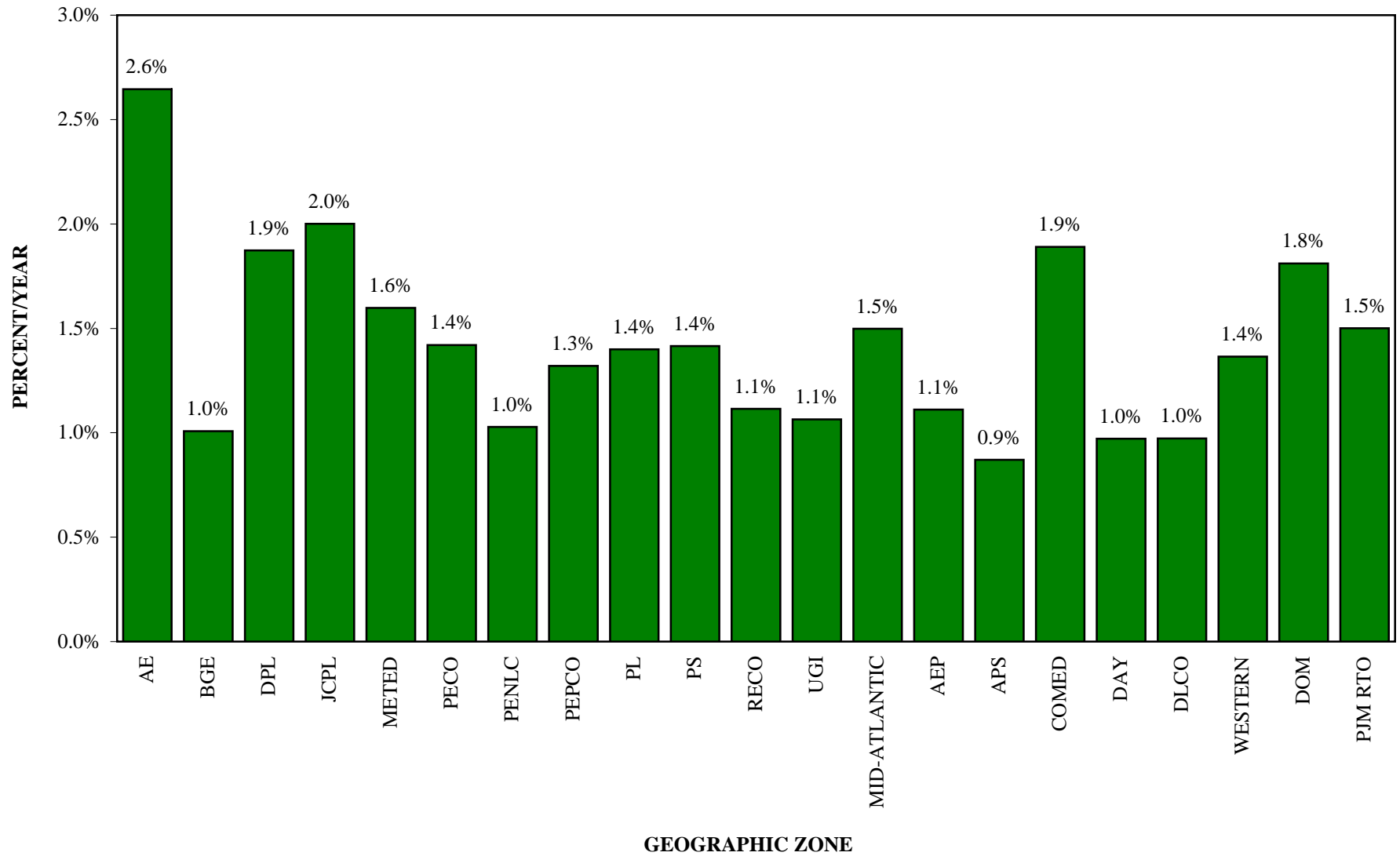
May 2008 Revision: Table B-2 - Historical winter peaks for 2006/07 were corrected for the following zones: FE/GPU, PLGRP, AEP, APS, ComEd, DAY, DLCO, PJM Western, DOM, and PJM RTO.

1. This report presents an independent load forecast prepared by PJM staff.
2. The report includes long-term forecasts of peaks, net energy and load management for each PJM zone, region, and the total RTO.
3. Several new tables appear in this year's report: 1) Table E-1 presents annual net energy for each PJM zone, Load Deliverability Area, and the total RTO; 2) Table E-2 presents monthly net energy for each PJM zone, Load Deliverability Area, and the total RTO; and 3) Table E-3 presents monthly net energy for the combined FE/GPU and PLGrp zones. Table B-8, which presents coincident summer peak loads, has been expanded to the full 15-year forecast horizon. The former E-tables are now presented as F-1 and F-2
4. The PJM RTO weather normalized summer peak for 2007 was 136,095 MW. The projection for the 2008 PJM RTO summer peak is 137,948 MW, an increase of 1,853 MW, or 1.4%, from the 2007 normalized peak.
5. Summer peak load growth for PJM RTO is projected to average 1.5% per year over the next 10 years, and 1.4% over the next 15 years. The PJM RTO summer peak is forecasted to be 160,107 MW in 2018, a 10-year increase of 22,159 MW, and reaches 170,367 MW in 2023, a 15-year increase of 32,419 MW. Annualized growth rates for individual zones range from 0.9% to 2.6%.
6. Winter peak load growth for PJM RTO is projected to average 1.1% per year over the next 10- and 15-year periods. The PJM RTO winter peak load in 2017/18 is forecast to be 127,250 MW, a 10-year increase of 13,685 MW, and reaches 133,518 MW in 2022/23, a 15-year increase of 19,953 MW. Annualized growth rates for individual zones range from 0.3 to 2.3%.
7. Based on the forecast contained within this report, the PJM RTO will continue to be summer peaking during the next 15 years.
8. The annual load factor is expected to continue a slow downward trend, consistent with increasing weather sensitivity of load. The PJM RTO load factor is forecasted to be 60.2% in 2008, dropping to 60.0% in 2018 and 59.9% in 2023.

### **NOTE:**

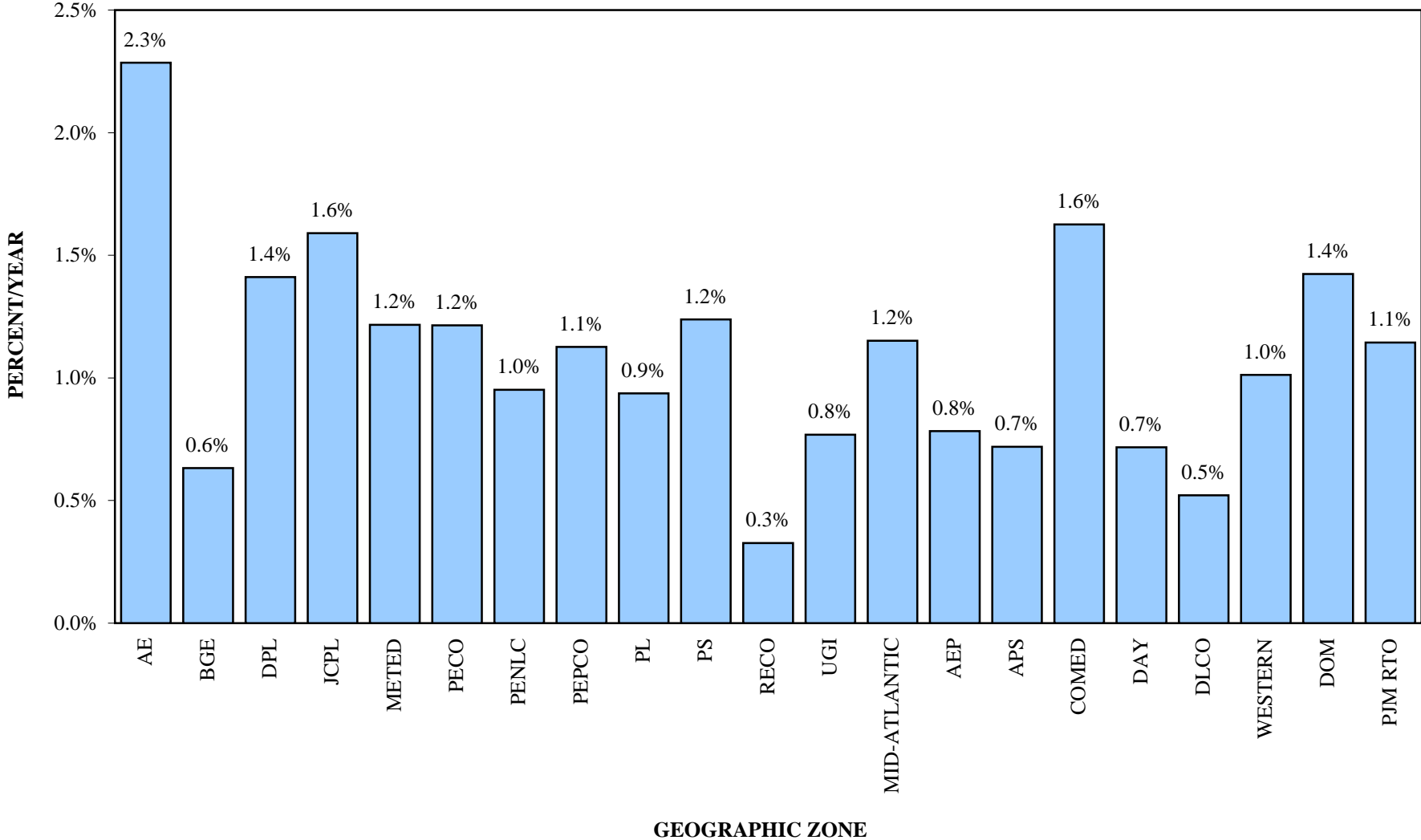
All compound growth rates are calculated from the first year of the forecast.

**PJM SUMMER PEAK LOAD GROWTH RATE  
2008-2018**

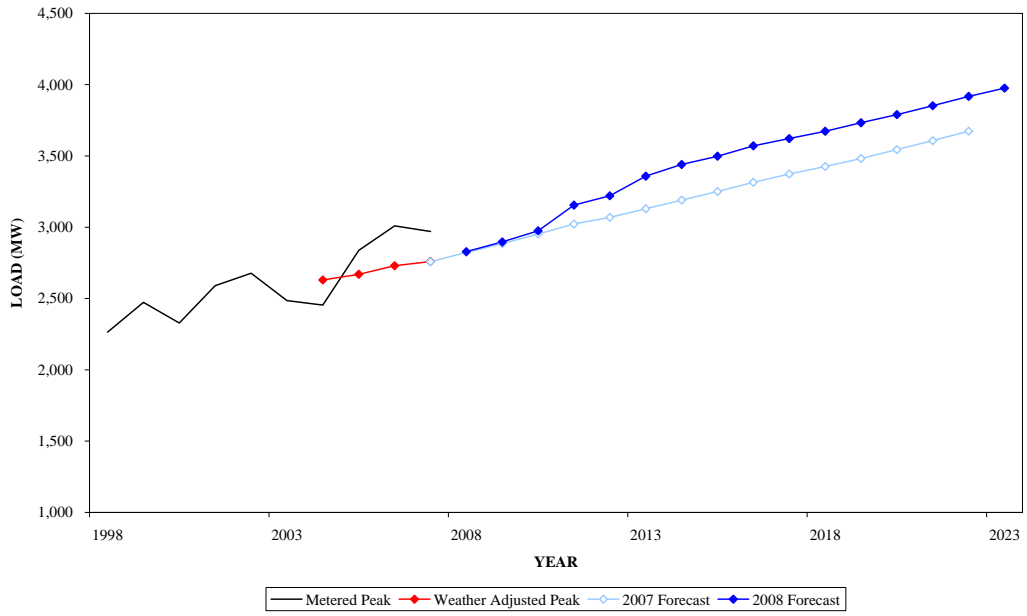




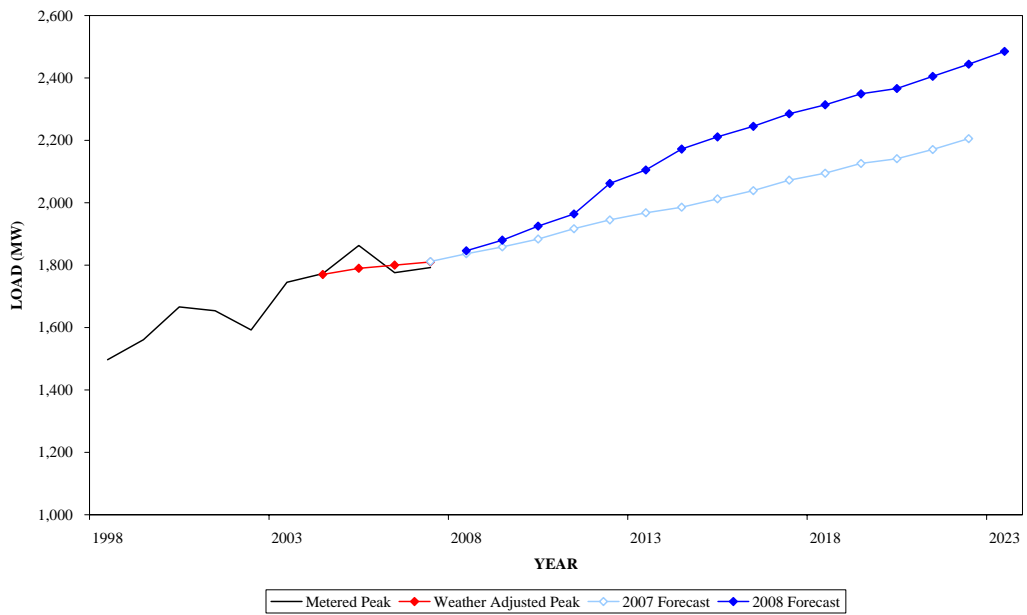
**PJM WINTER PEAK LOAD GROWTH RATE  
2008-2018**



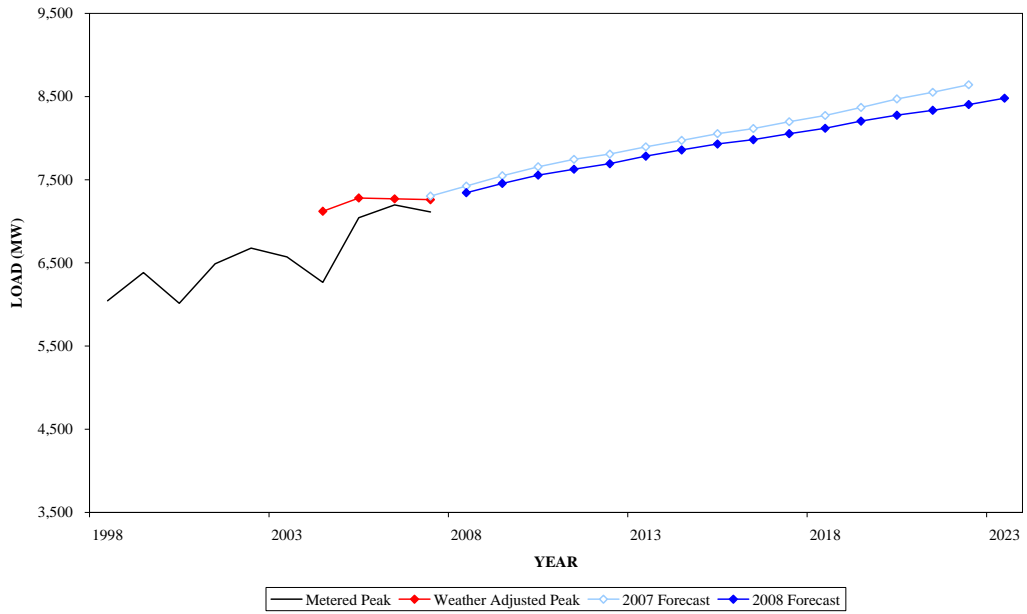
**SUMMER PEAK DEMAND FOR AE  
GEOGRAPHIC ZONE**



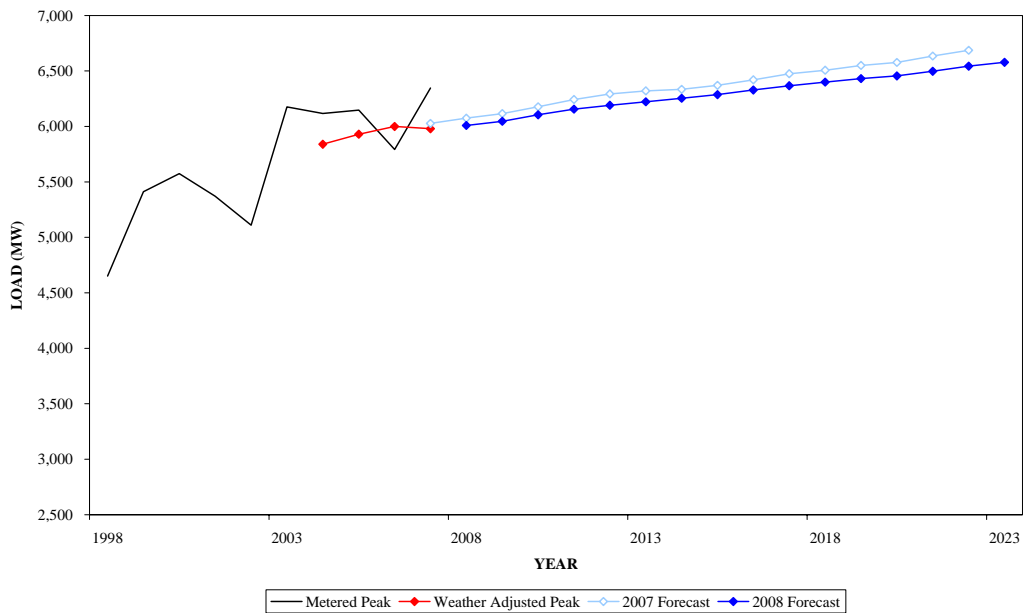
**WINTER PEAK DEMAND FOR AE  
GEOGRAPHIC ZONE**



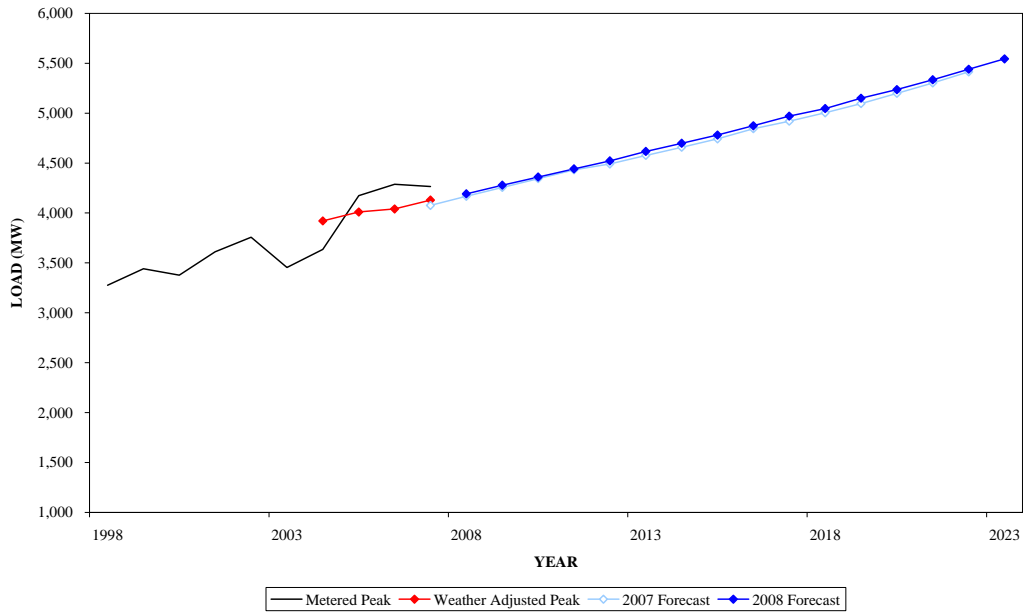
**SUMMER PEAK DEMAND FOR BGE  
GEOGRAPHIC ZONE**



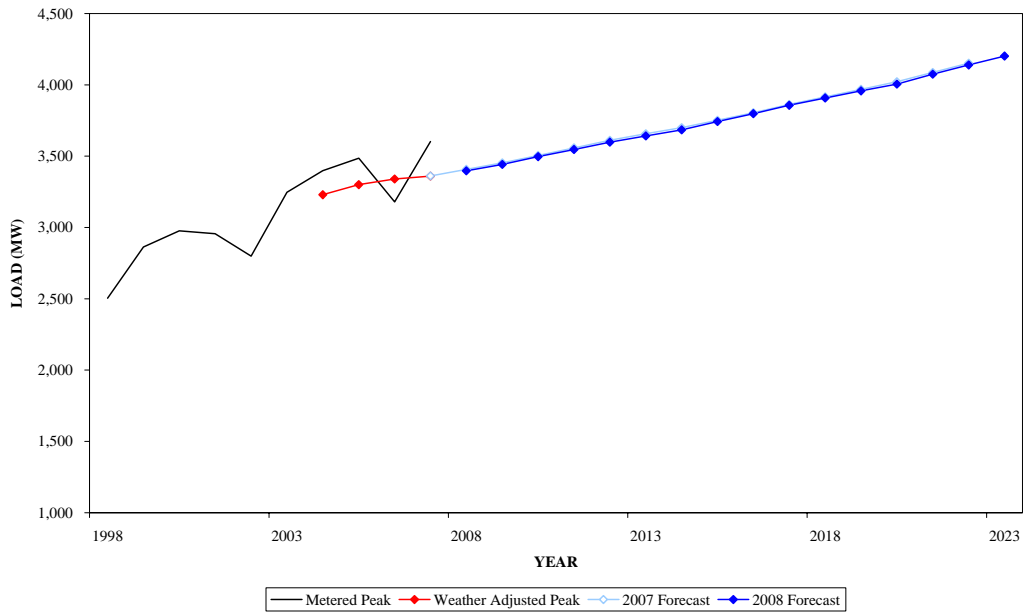
**WINTER PEAK DEMAND FOR BGE  
GEOGRAPHIC ZONE**



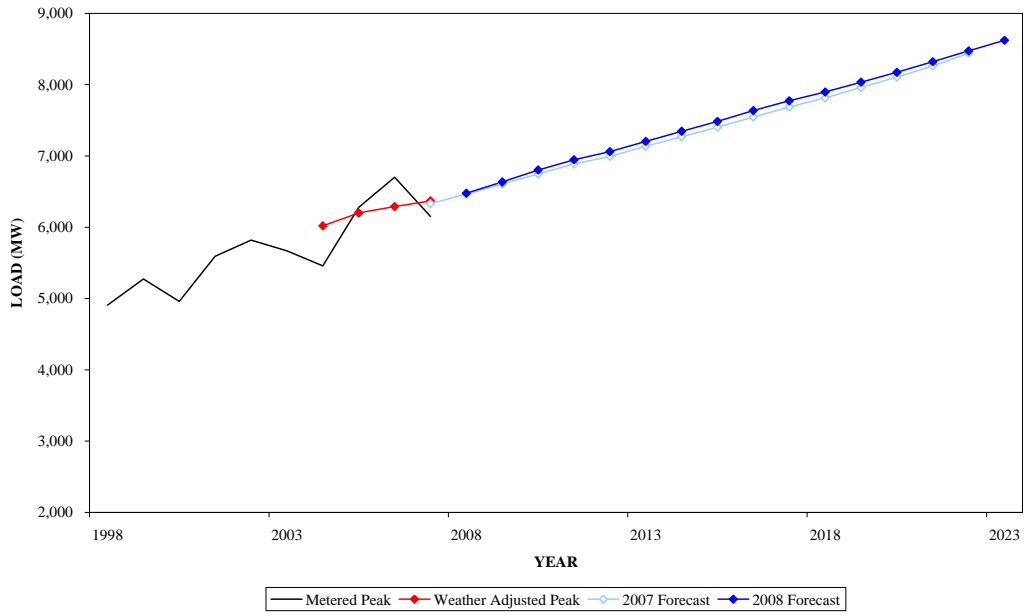
**SUMMER PEAK DEMAND FOR DPL  
GEOGRAPHIC ZONE**



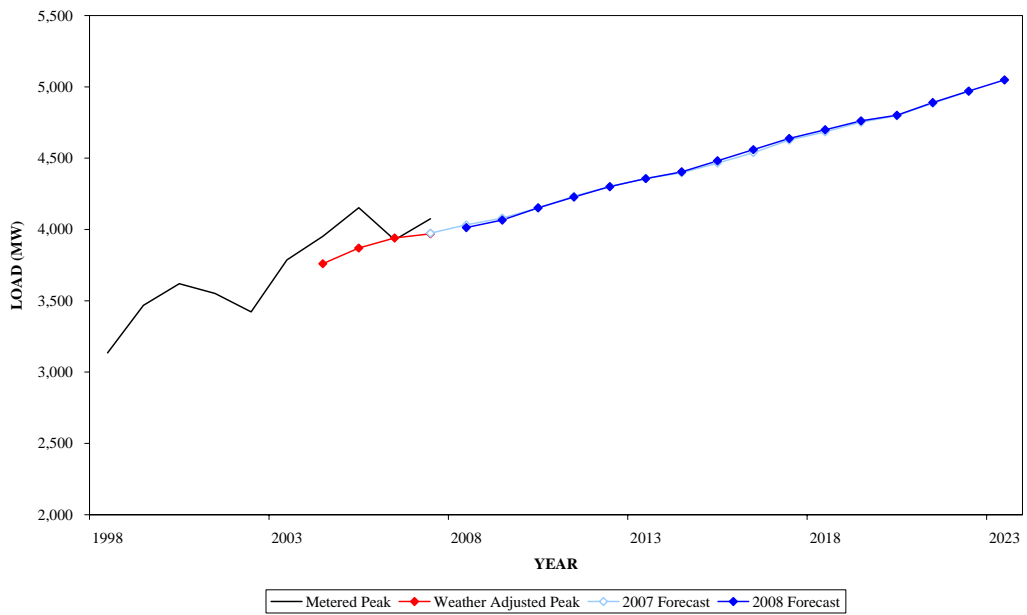
**WINTER PEAK DEMAND FOR DPL  
GEOGRAPHIC ZONE**



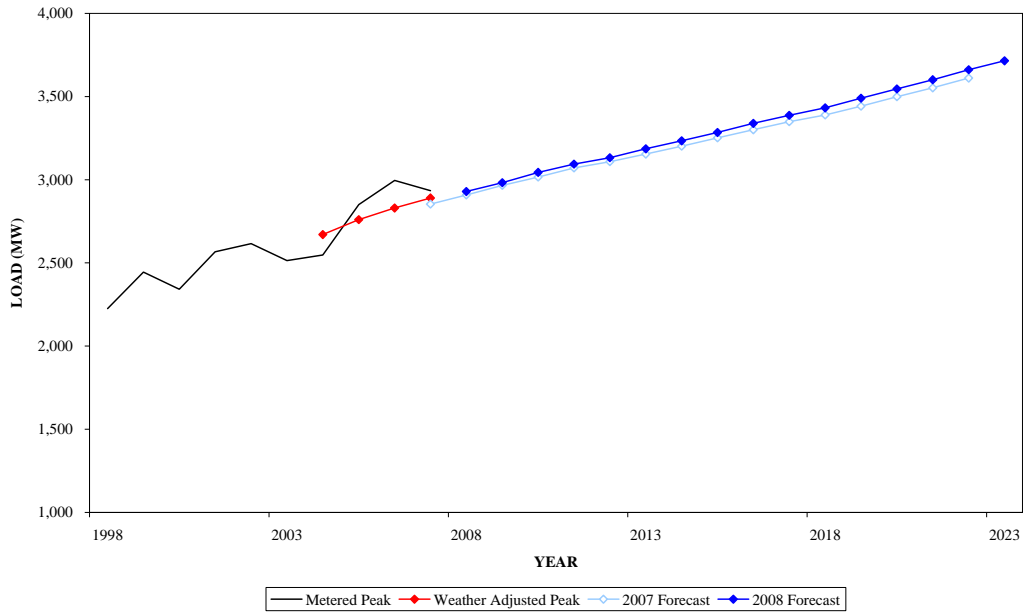
**SUMMER PEAK DEMAND FOR JCPL  
GEOGRAPHIC ZONE**



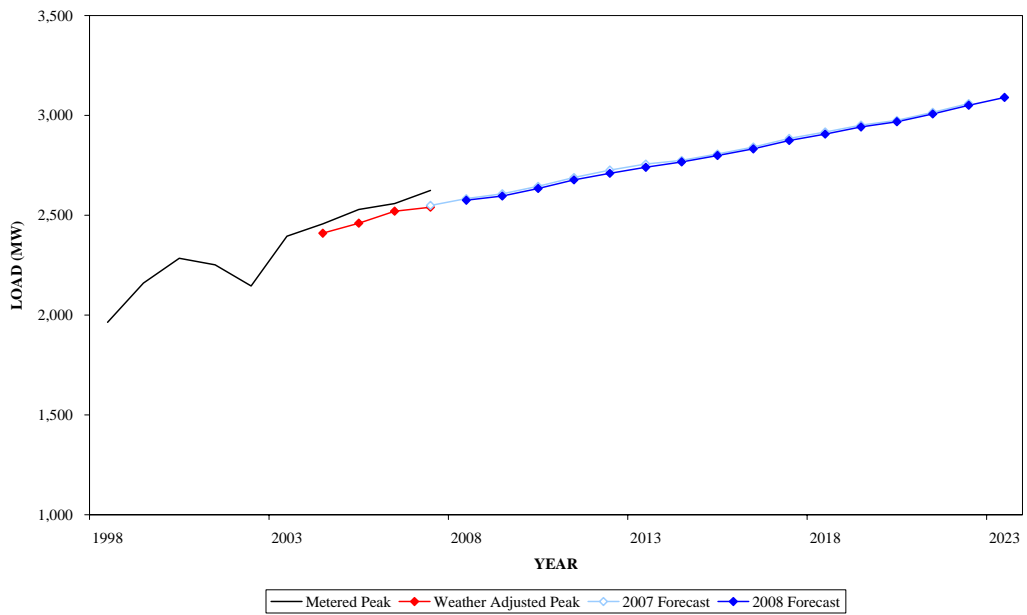
**WINTER PEAK DEMAND FOR JCPL  
GEOGRAPHIC ZONE**



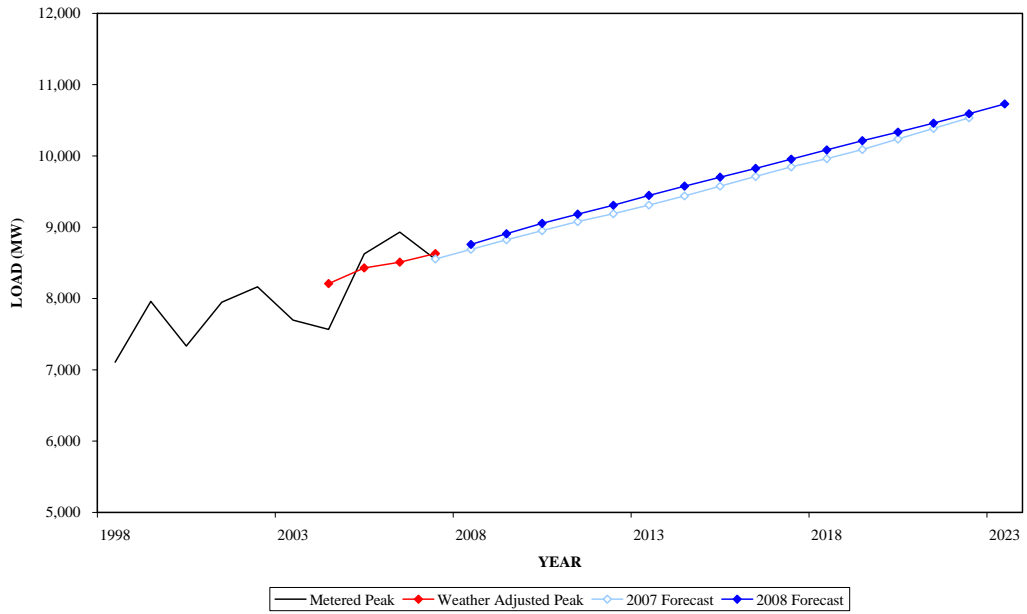
**SUMMER PEAK DEMAND FOR METED  
GEOGRAPHIC ZONE**



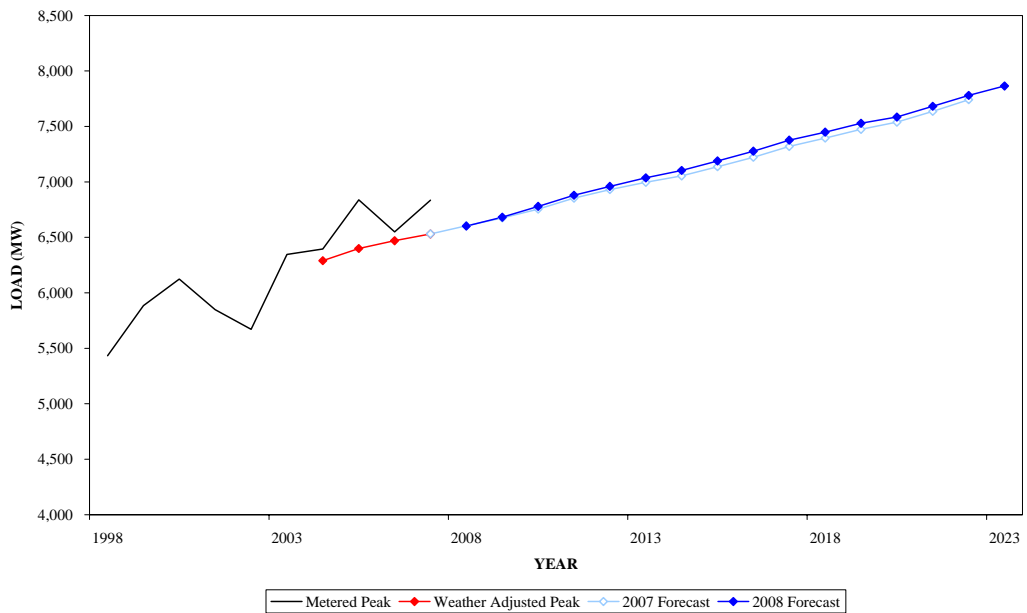
**WINTER PEAK DEMAND FOR METED  
GEOGRAPHIC ZONE**



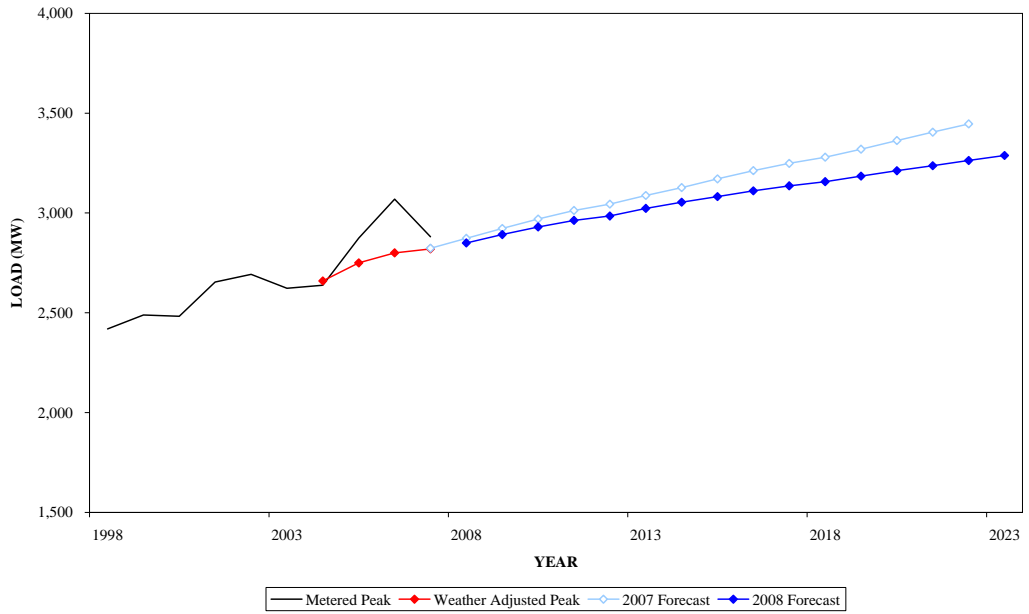
**SUMMER PEAK DEMAND FOR PECO  
GEOGRAPHIC ZONE**



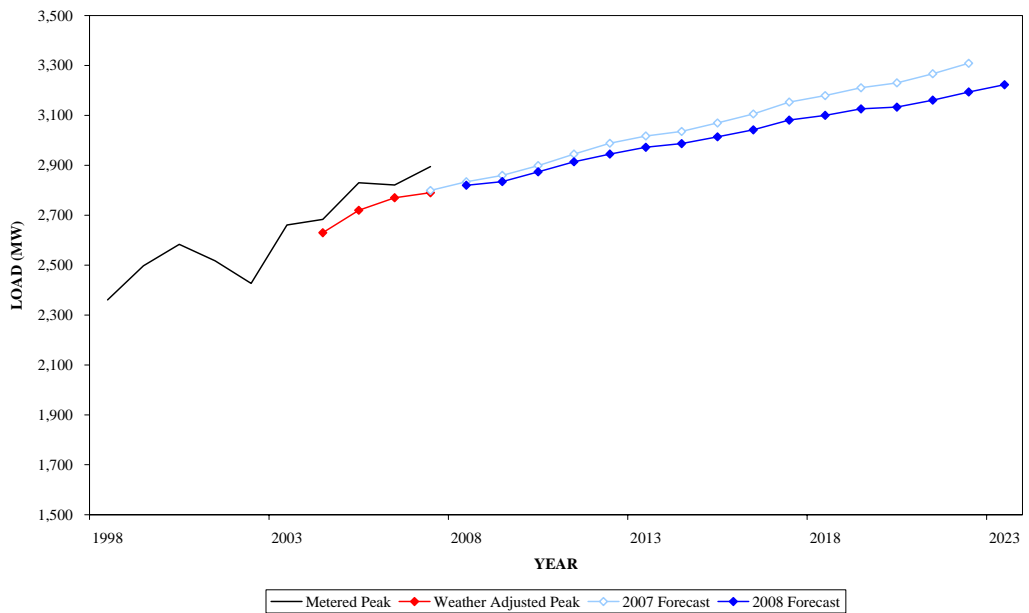
**WINTER PEAK DEMAND FOR PECO  
GEOGRAPHIC ZONE**



**SUMMER PEAK DEMAND FOR PENLC  
GEOGRAPHIC ZONE**

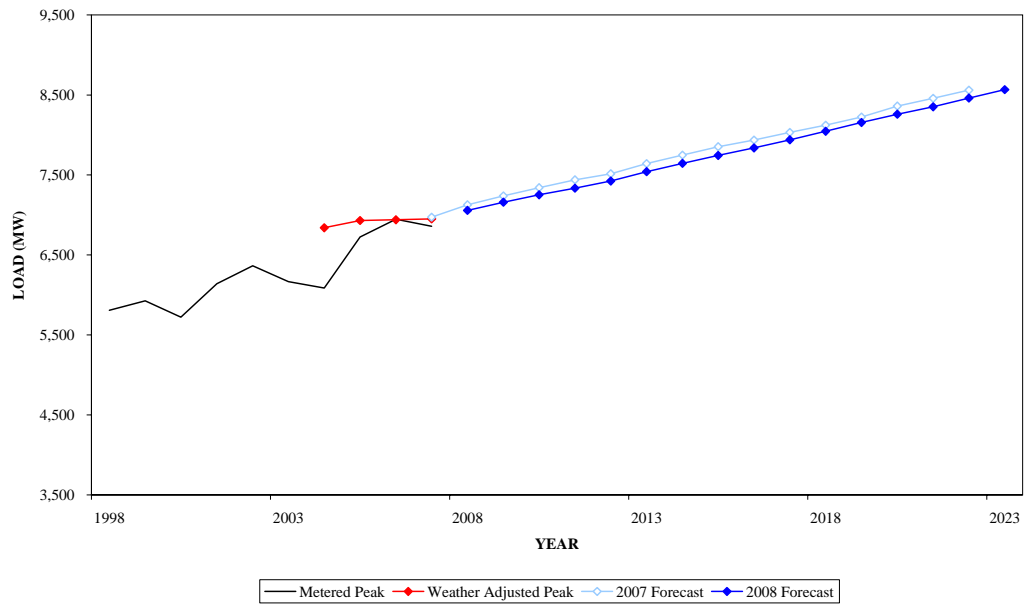


**WINTER PEAK DEMAND FOR PENLC  
GEOGRAPHIC ZONE**

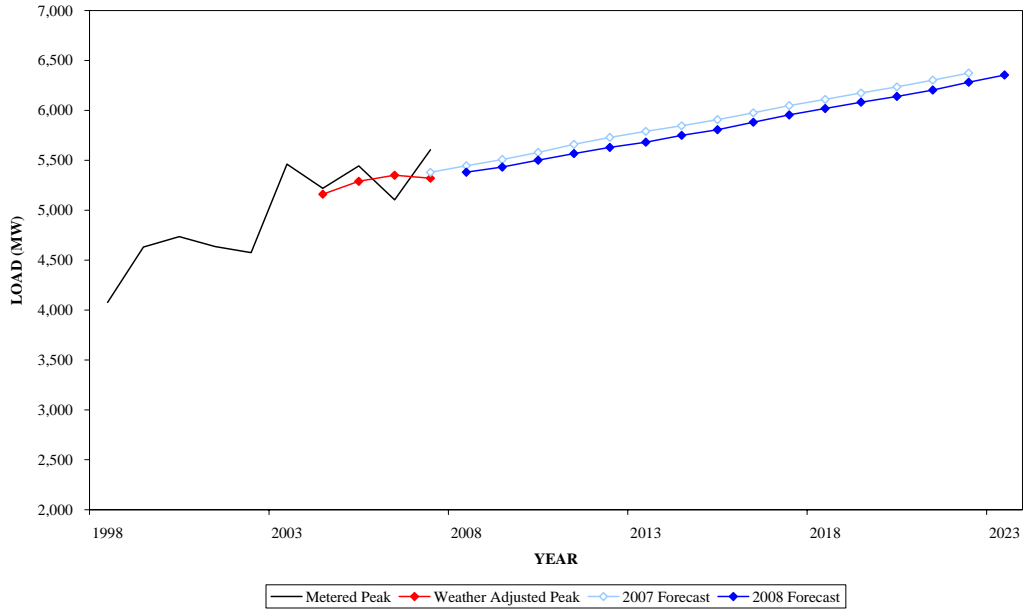




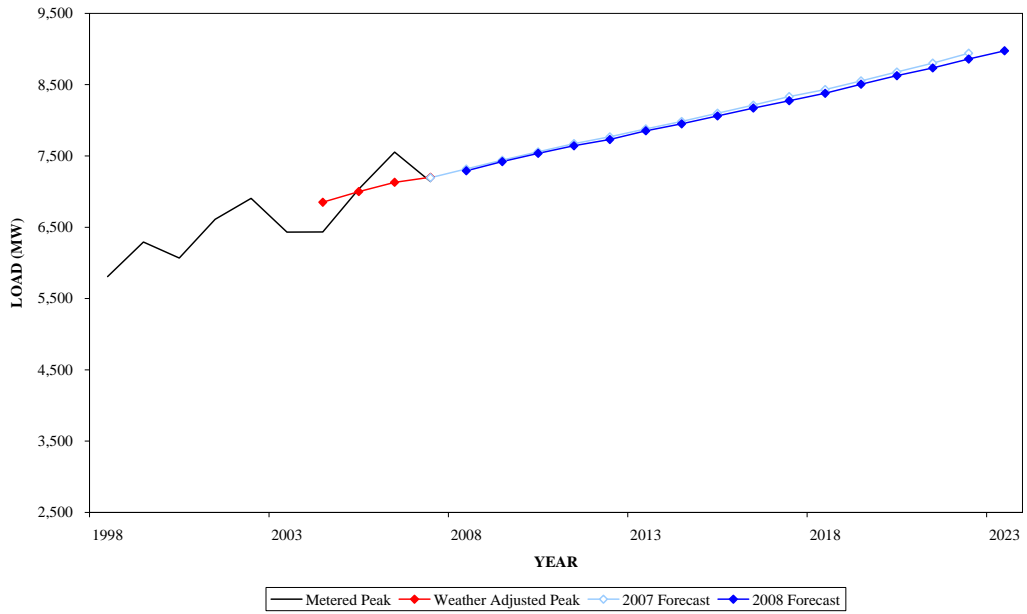
**SUMMER PEAK DEMAND FOR PEPCO  
GEOGRAPHIC ZONE**



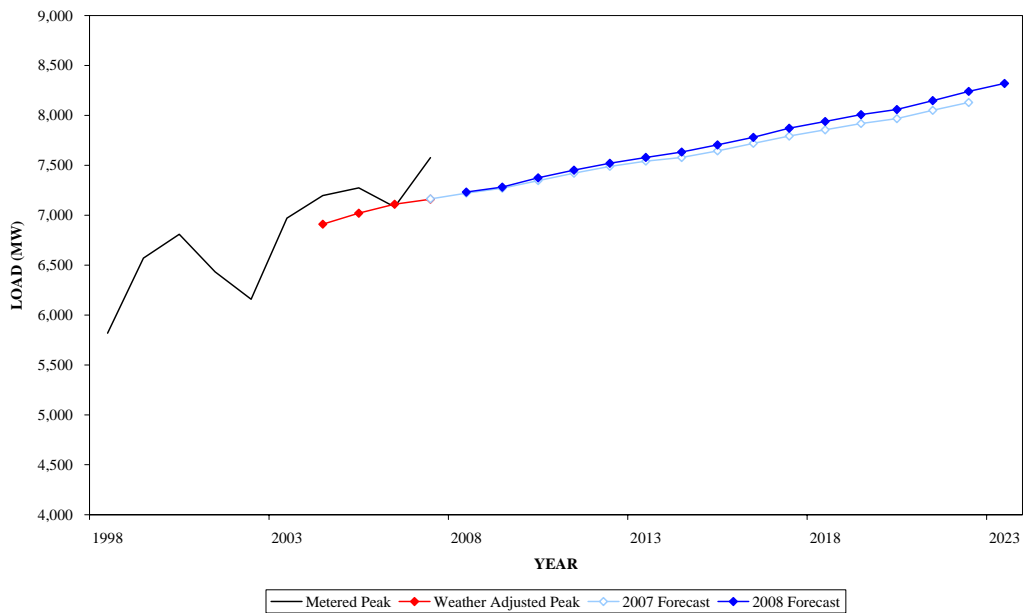
**WINTER PEAK DEMAND FOR PEPCO  
GEOGRAPHIC ZONE**



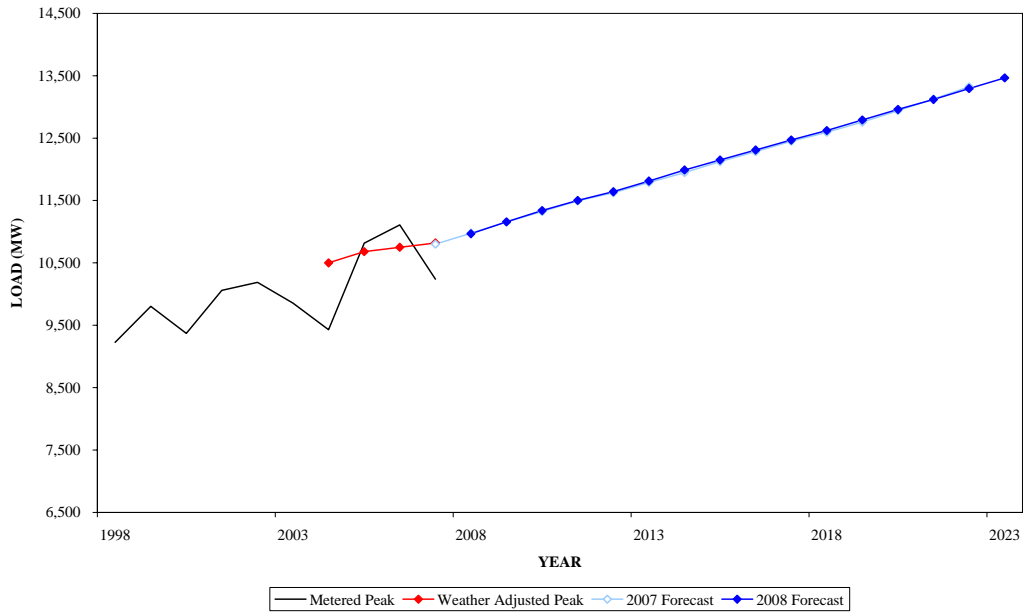
**SUMMER PEAK DEMAND FOR PL  
GEOGRAPHIC ZONE**



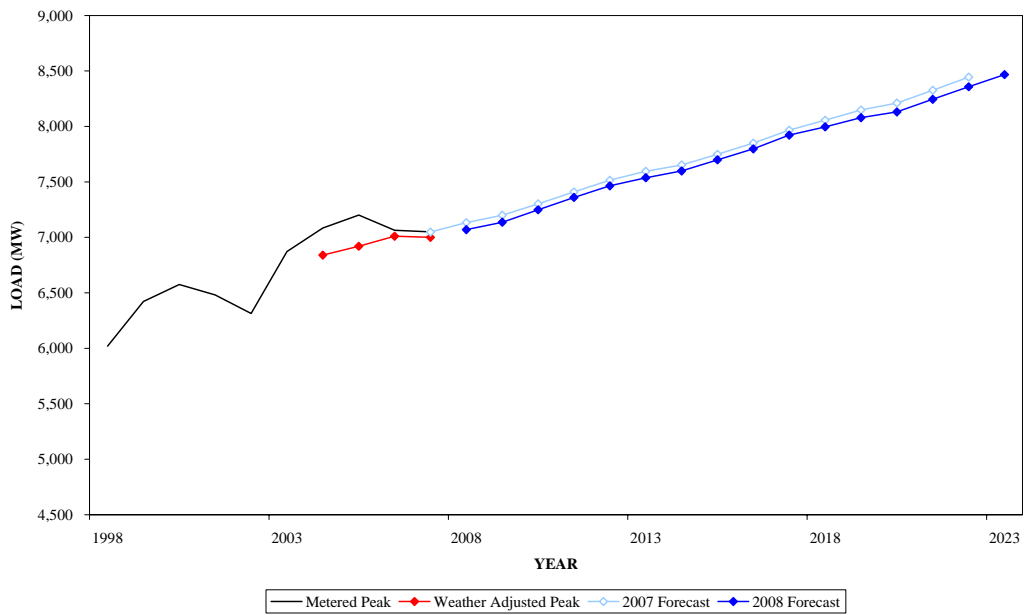
**WINTER PEAK DEMAND FOR PL  
GEOGRAPHIC ZONE**



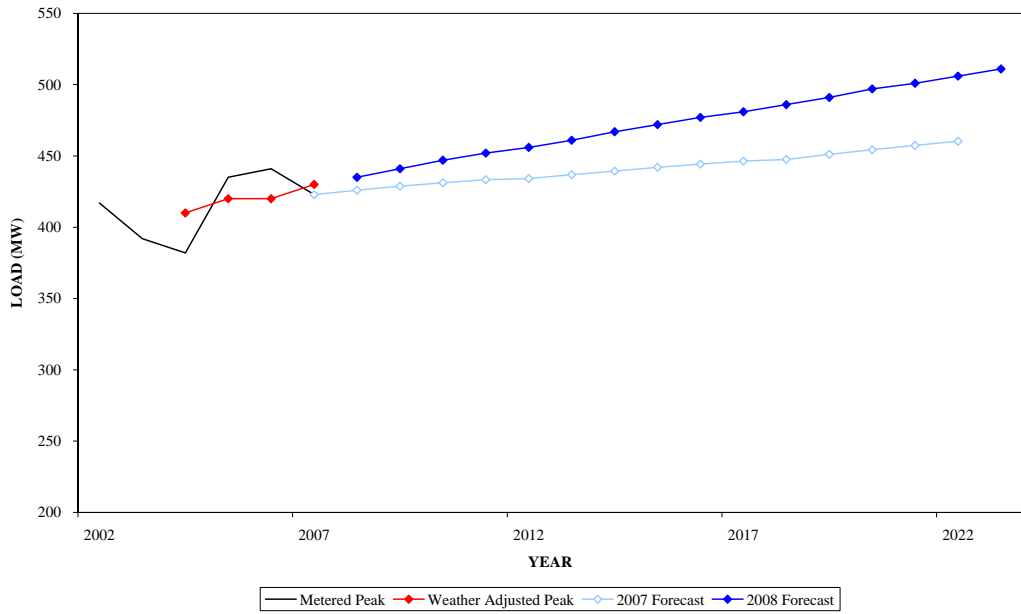
**SUMMER PEAK DEMAND FOR PS  
GEOGRAPHIC ZONE**



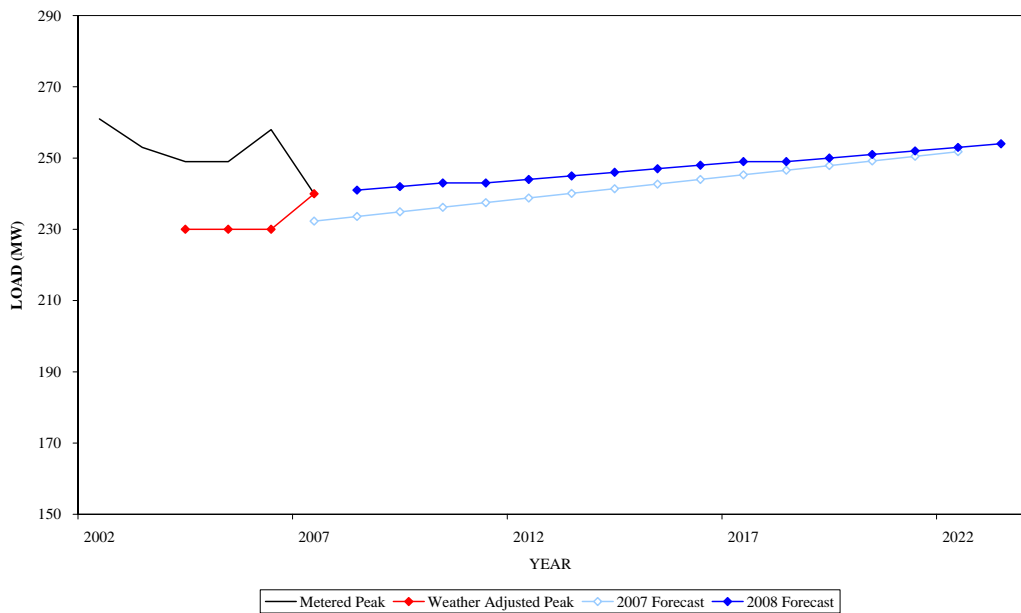
**WINTER PEAK DEMAND FOR PS  
GEOGRAPHIC ZONE**



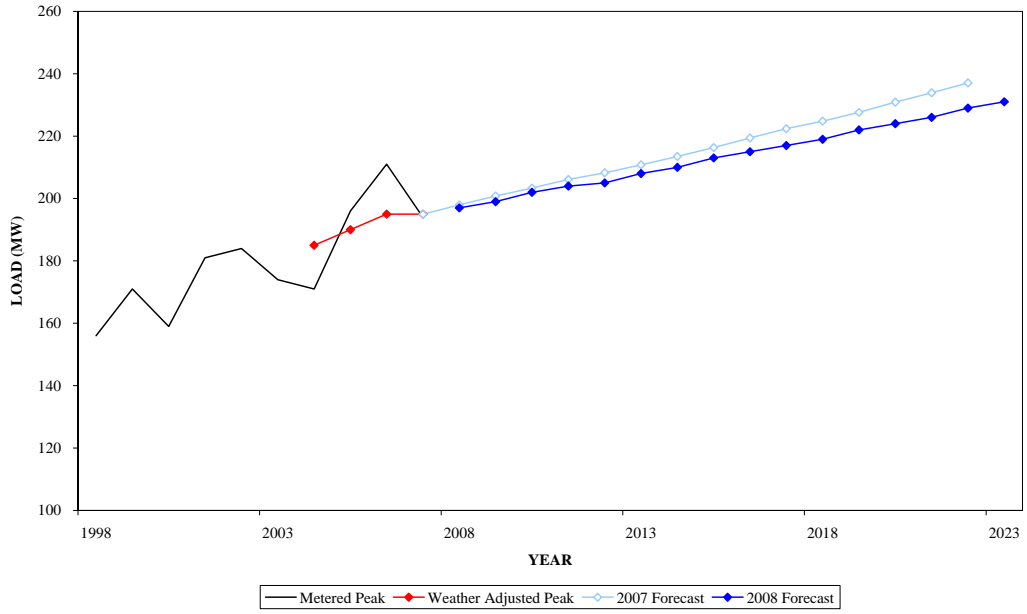
**SUMMER PEAK DEMAND FOR RECO  
GEOGRAPHIC ZONE**



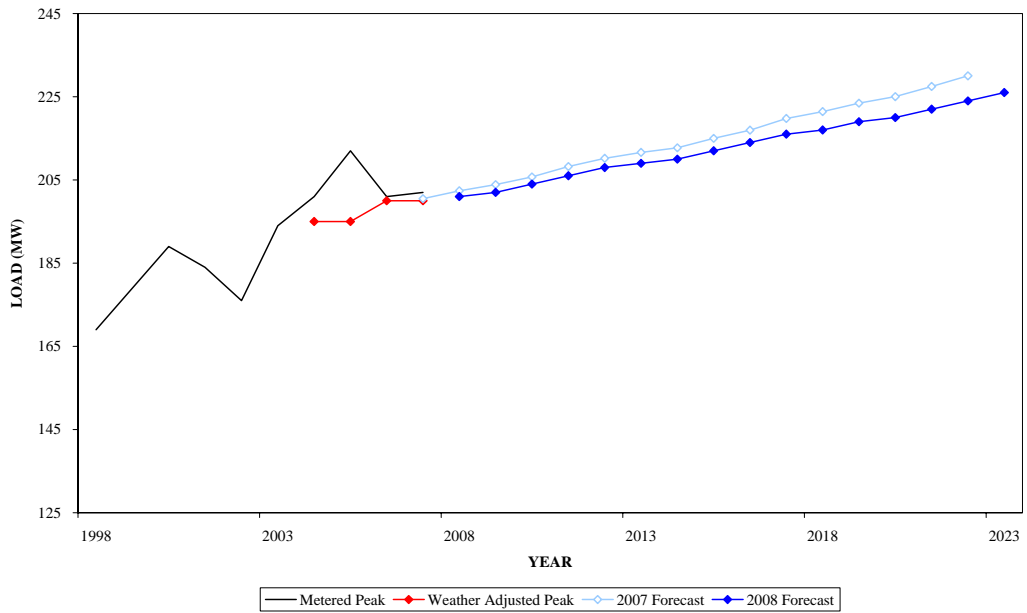
**WINTER PEAK DEMAND FOR RECO  
GEOGRAPHIC ZONE**



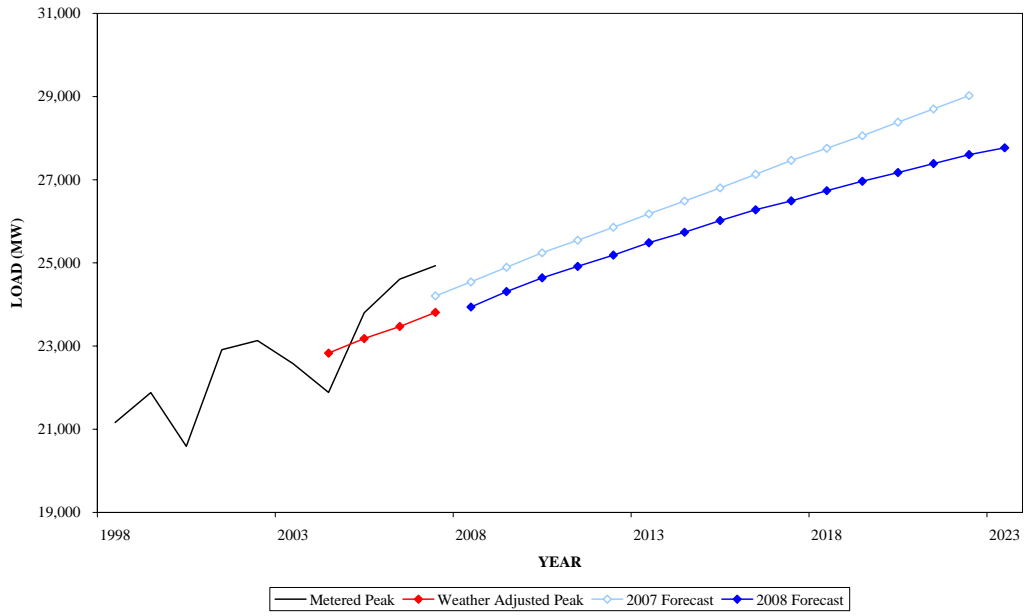
**SUMMER PEAK DEMAND FOR UGI  
GEOGRAPHIC ZONE**



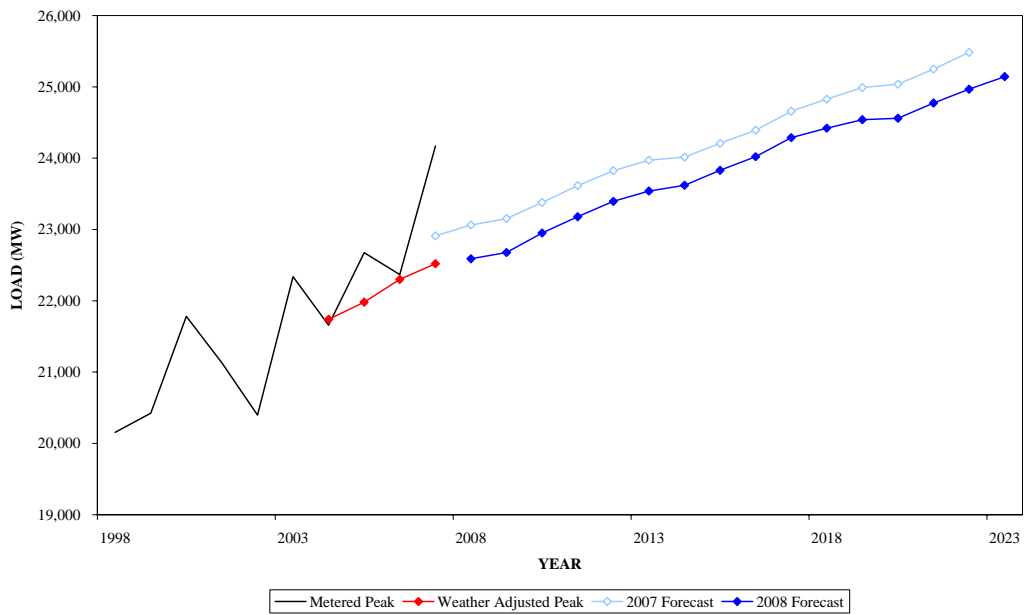
**WINTER PEAK DEMAND FOR UGI  
GEOGRAPHIC ZONE**



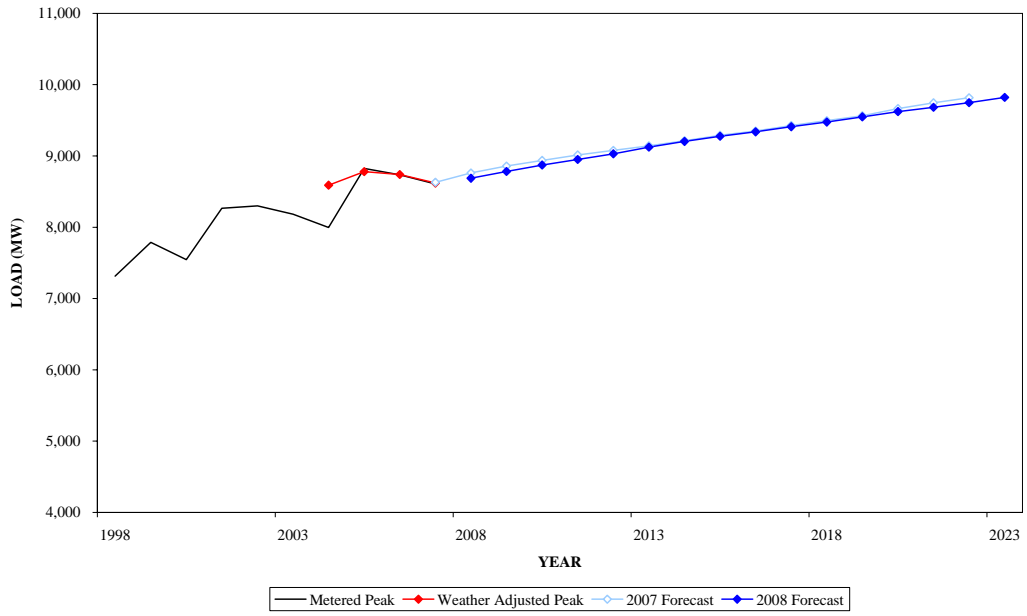
**SUMMER PEAK DEMAND FOR AEP  
GEOGRAPHIC ZONE**



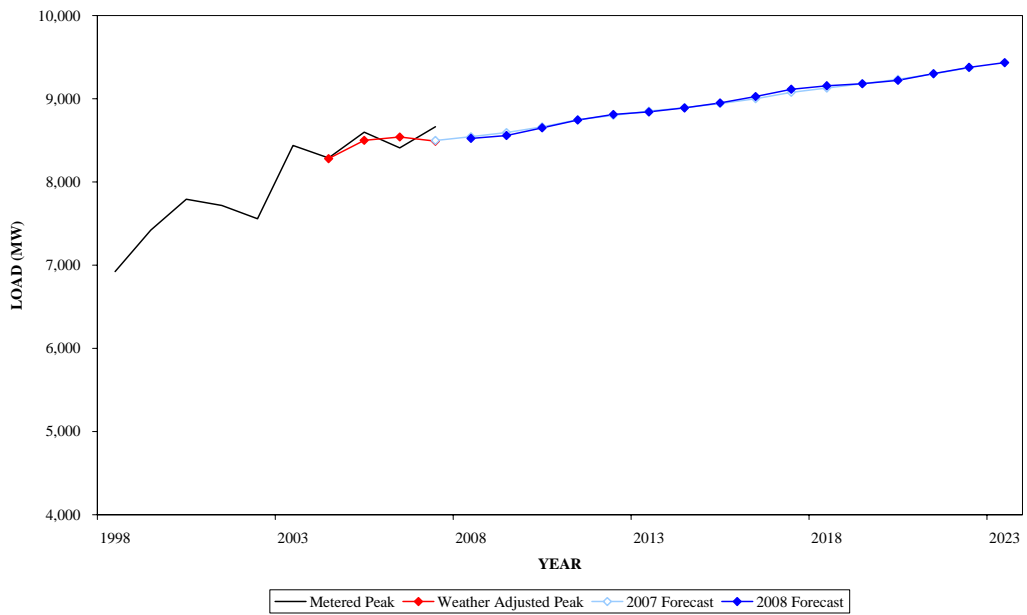
**WINTER PEAK DEMAND FOR AEP  
GEOGRAPHIC ZONE**



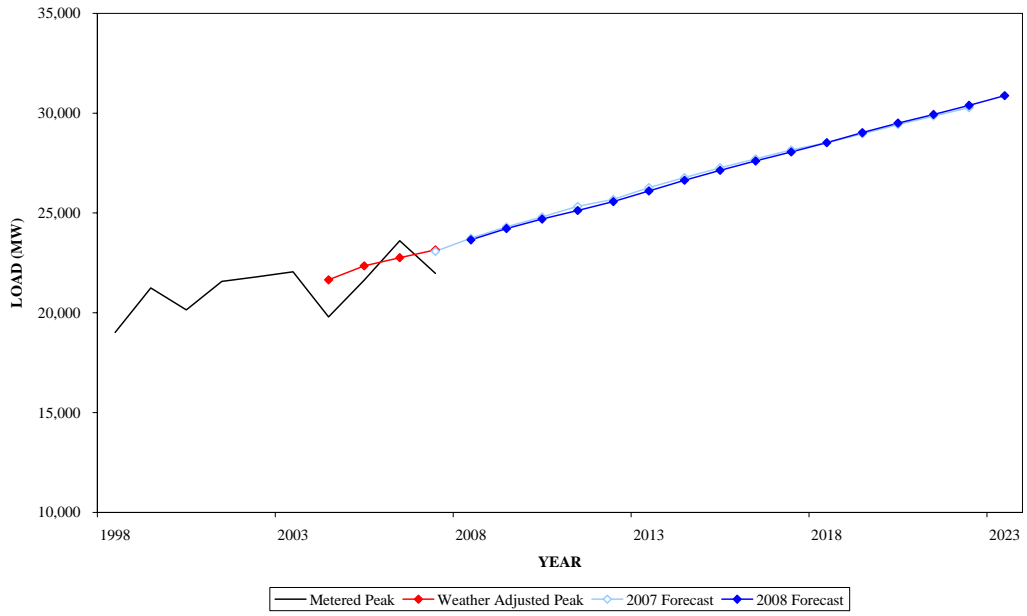
**SUMMER PEAK DEMAND FOR APS  
GEOGRAPHIC ZONE**



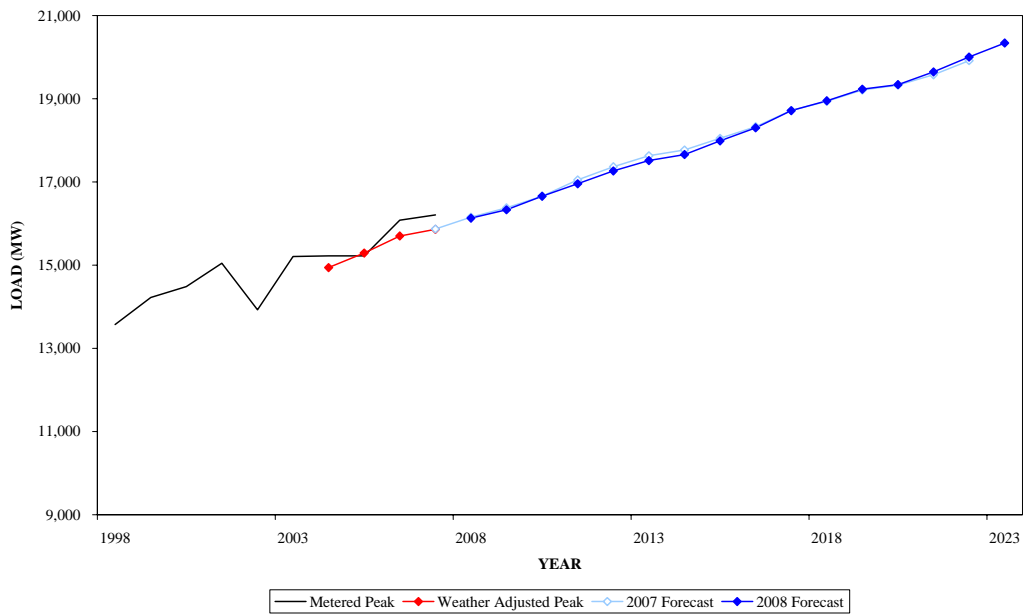
**WINTER PEAK DEMAND FOR APS  
GEOGRAPHIC ZONE**



**SUMMER PEAK DEMAND FOR COMED  
GEOGRAPHIC ZONE**

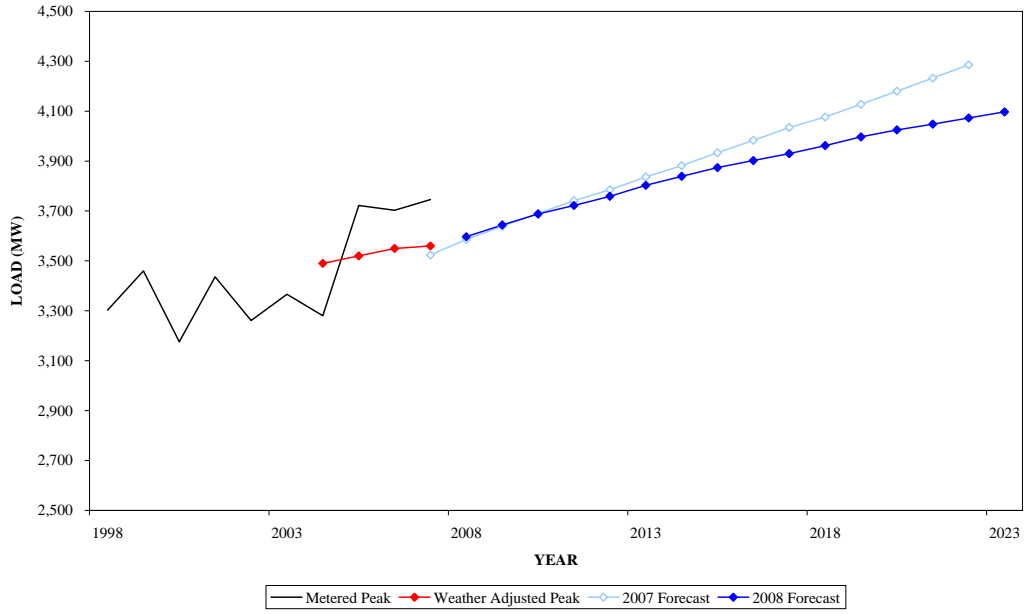


**WINTER PEAK DEMAND FOR COMED  
GEOGRAPHIC ZONE**

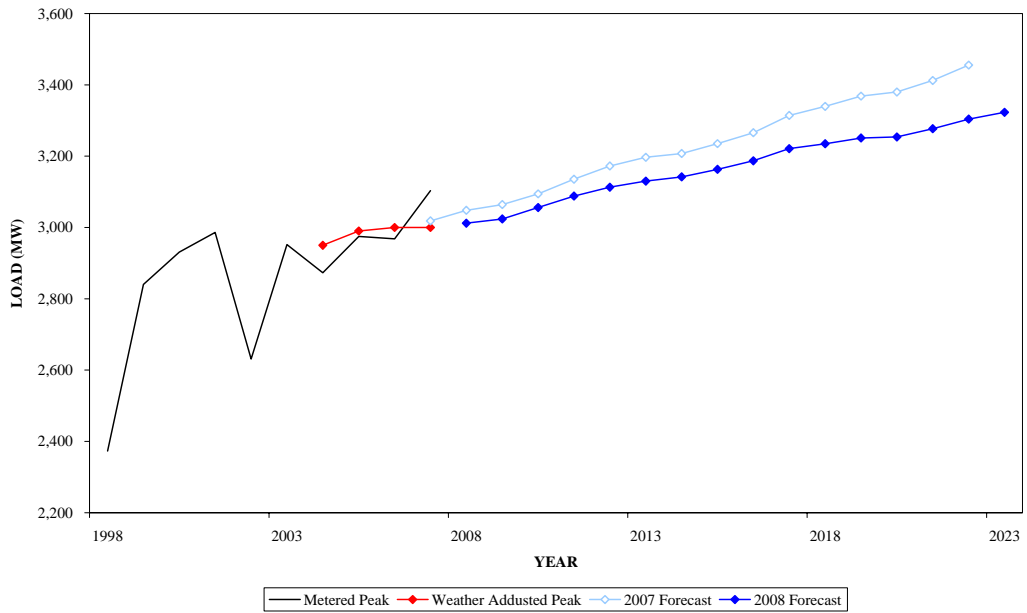




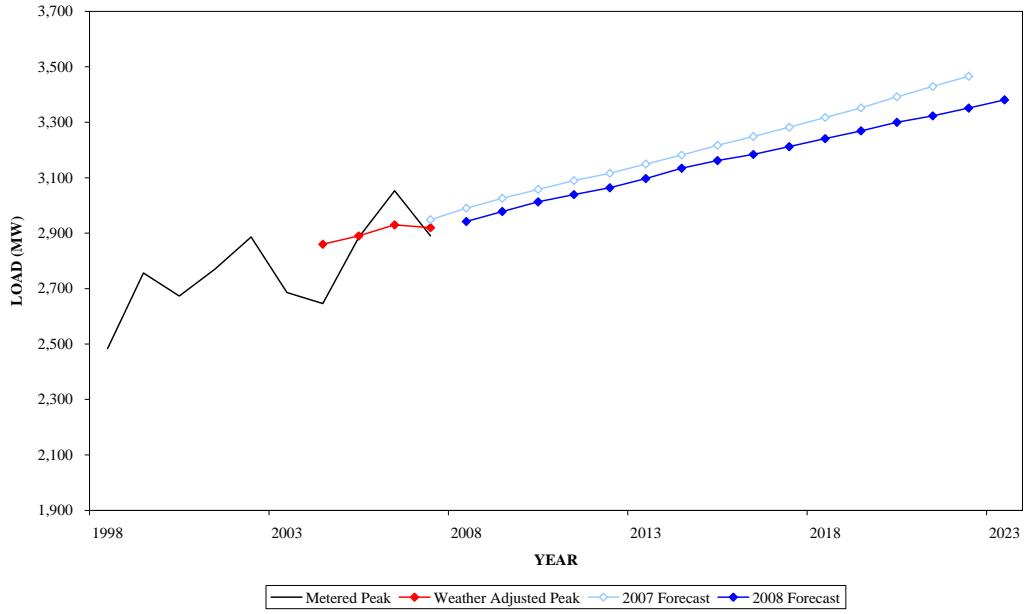
**SUMMER PEAK DEMAND FOR DAY  
GEOGRAPHIC ZONE**



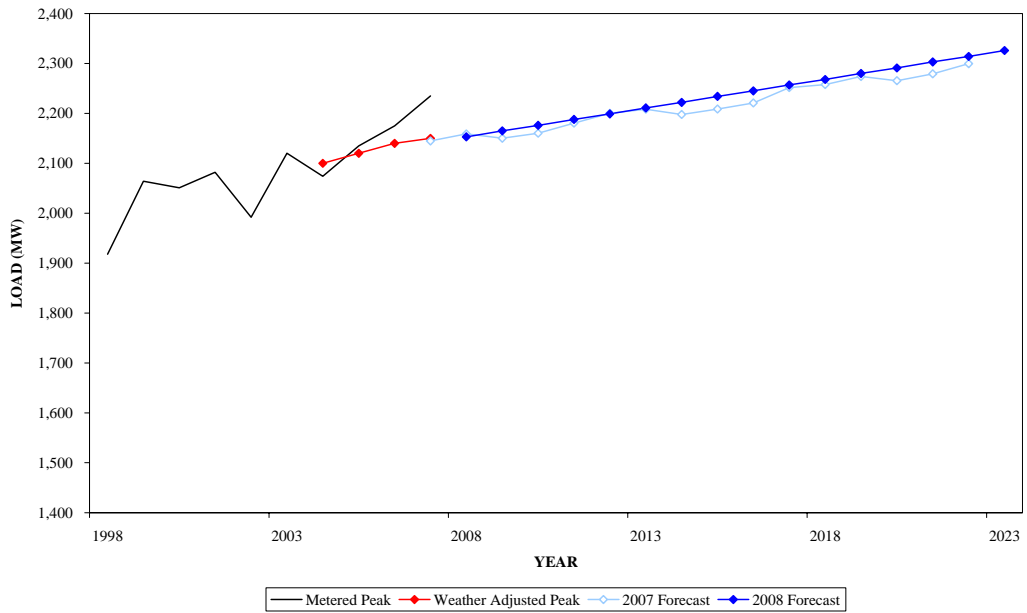
**WINTER PEAK DEMAND FOR DAY  
GEOGRAPHIC ZONE**



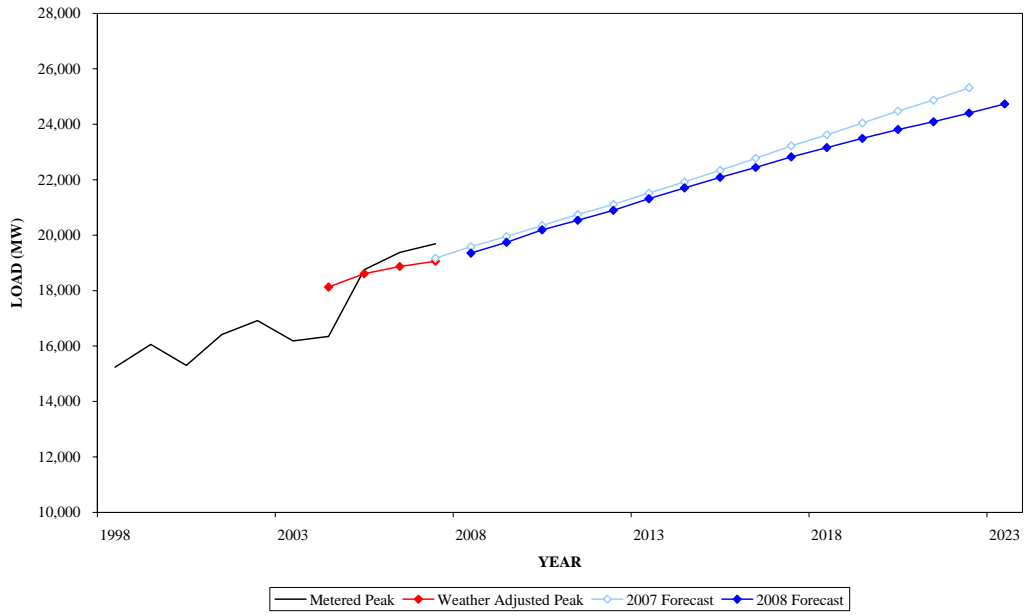
**SUMMER PEAK DEMAND FOR DLCO  
GEOGRAPHIC ZONE**



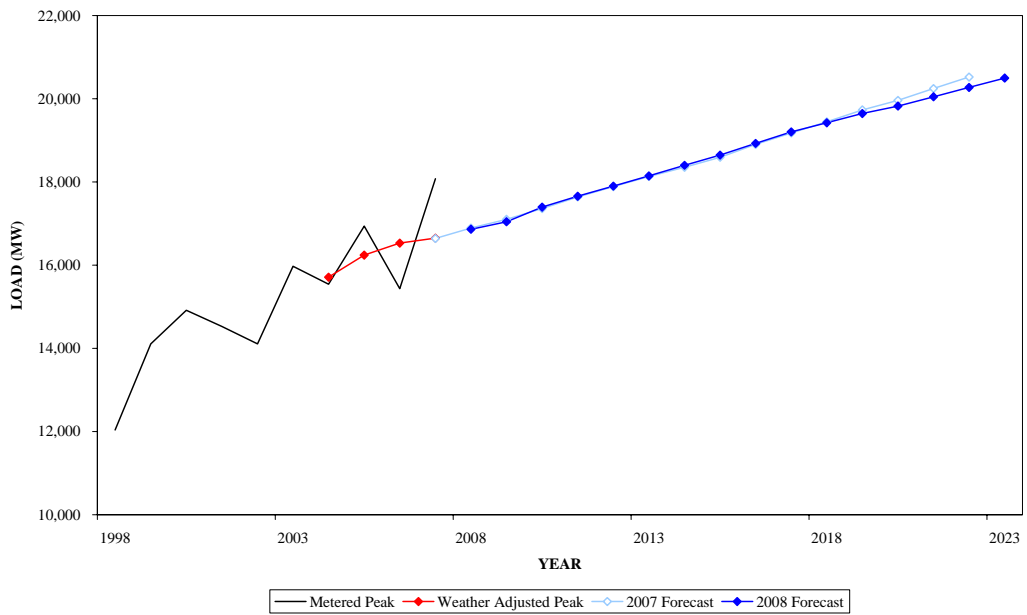
**WINTER PEAK DEMAND FOR DLCO  
GEOGRAPHIC ZONE**



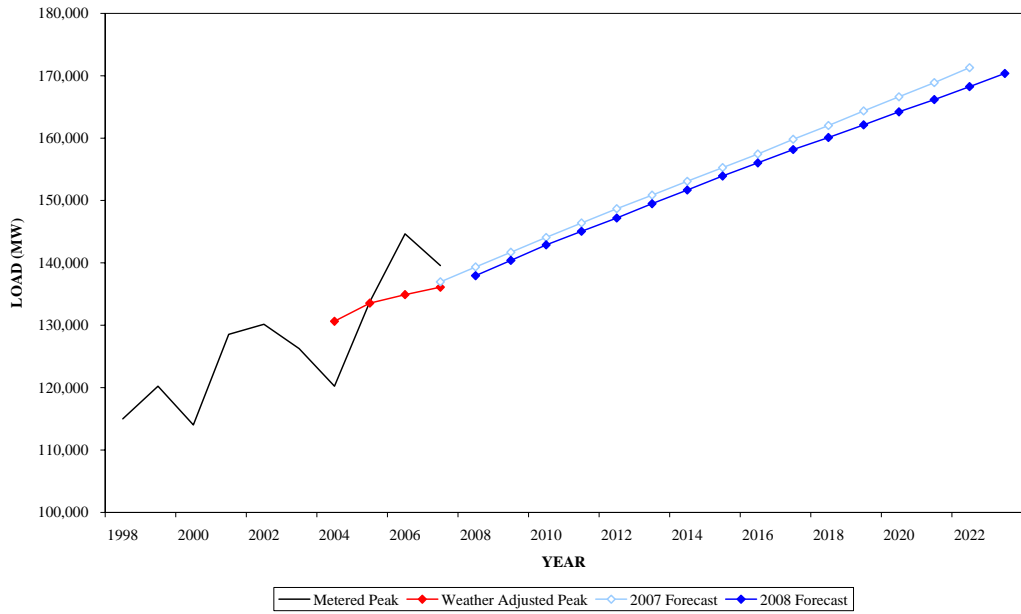
**SUMMER PEAK DEMAND FOR DOM  
GEOGRAPHIC ZONE**



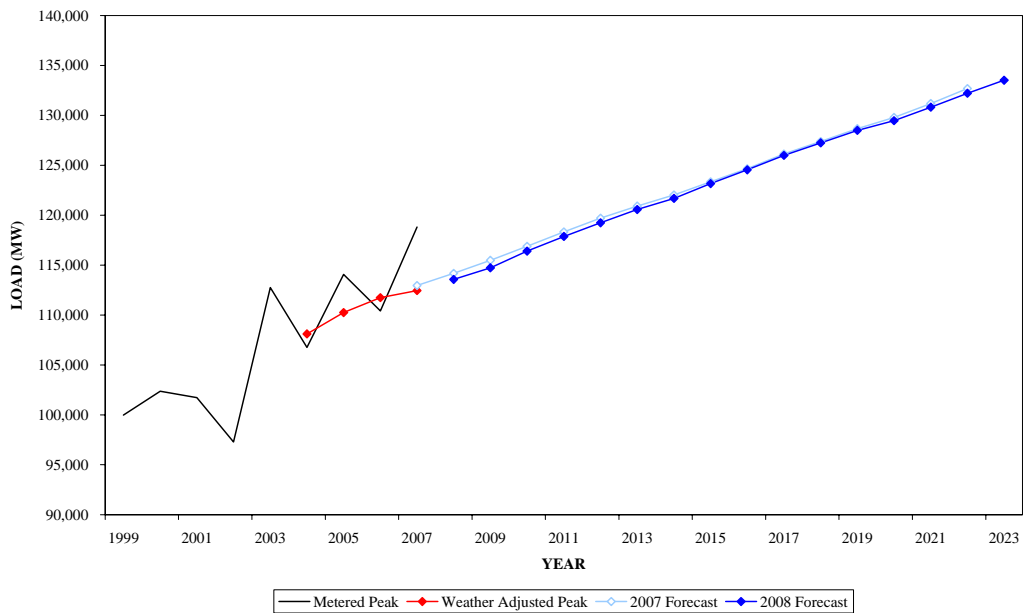
**WINTER PEAK DEMAND FOR DOM  
GEOGRAPHIC ZONE**



**SUMMER PEAK DEMAND FOR PJM RTO**



**WINTER PEAK DEMAND FOR PJM RTO**



**Table A-1**

**PJM MID-ATLANTIC  
SUMMER PEAK LOAD COMPARISONS OF THE CURRENT FORECAST  
TO THE JANUARY 2007 LOAD FORECAST REPORT**

**INCREASE OR DECREASE OVER PRIOR FORECAST**

	<b>2008</b>		<b>2013</b>		<b>2017</b>	
	<b>MW</b>	<b>%</b>	<b>MW</b>	<b>%</b>	<b>MW</b>	<b>%</b>
AE	6	0.2%	227	7.3%	249	7.4%
BGE	(81)	-1.1%	(112)	-1.4%	(144)	-1.8%
DPL	26	0.6%	40	0.9%	51	1.0%
JCPL	11	0.2%	69	1.0%	85	1.1%
METED	21	0.7%	32	1.0%	38	1.1%
PECO	70	0.8%	135	1.5%	108	1.1%
PENLC	(23)	-0.8%	(65)	-2.1%	(112)	-3.5%
PEPCO	(69)	-1.0%	(100)	-1.3%	(93)	-1.2%
PL	(25)	-0.3%	(27)	-0.3%	(58)	-0.7%
PS	(10)	-0.1%	23	0.2%	19	0.2%
RECO	9	2.1%	24	5.5%	35	7.7%
UGI	(1)	-0.5%	(3)	-1.3%	(5)	-2.4%
 PJM MID-ATLANTIC	 (84)	 -0.1%	 223	 0.3%	 152	 0.2%
 FE/GPU	 (31)	 -0.3%	 (9)	 -0.1%	 (36)	 -0.3%
PLGRP	(26)	-0.3%	(29)	-0.4%	(63)	-0.7%

**Table A-1**

**PJM WESTERN, PJM SOUTHERN AND PJM RTO  
SUMMER PEAK LOAD COMPARISONS OF THE CURRENT FORECAST  
TO THE JANUARY 2007 LOAD FORECAST REPORT**

**INCREASE OR DECREASE OVER PRIOR FORECAST**

	<b>2008</b>		<b>2013</b>		<b>2017</b>	
	<b>MW</b>	<b>%</b>	<b>MW</b>	<b>%</b>	<b>MW</b>	<b>%</b>
AEP	(603)	-2.5%	(694)	-2.7%	(974)	-3.5%
APS	(74)	-0.8%	(18)	-0.2%	(17)	-0.2%
COMED	(84)	-0.4%	(168)	-0.6%	(102)	-0.4%
DAY	11	0.3%	(33)	-0.9%	(105)	-2.6%
DLCO	(48)	-1.6%	(52)	-1.7%	(70)	-2.1%
PJM WESTERN	(677)	-1.1%	(833)	-1.2%	(1122)	-1.6%
DOM	(230)	-1.2%	(204)	-0.9%	(398)	-1.7%
PJM RTO	(1394)	-1.0%	(1371)	-0.9%	(1646)	-1.0%

Table A-2

**PJM MID-ATLANTIC  
WINTER PEAK LOAD COMPARISONS OF THE CURRENT FORECAST  
TO THE JANUARY 2007 LOAD FORECAST REPORT**

**INCREASE OR DECREASE OVER PRIOR FORECAST**

	07/08		12/13		16/17	
	MW	%	MW	%	MW	%
AE	10	0.5%	137	7.0%	213	10.3%
BGE	(66)	-1.1%	(99)	-1.6%	(108)	-1.7%
DPL	(10)	-0.3%	(15)	-0.4%	(6)	-0.1%
JCPL	(19)	-0.5%	(1)	0.0%	11	0.2%
METED	(8)	-0.3%	(16)	-0.6%	(11)	-0.4%
PECO	(3)	0.0%	40	0.6%	57	0.8%
PENLC	(14)	-0.5%	(46)	-1.5%	(72)	-2.3%
PEPCO	(65)	-1.2%	(109)	-1.9%	(93)	-1.5%
PL	10	0.1%	37	0.5%	78	1.0%
PS	(63)	-0.9%	(58)	-0.8%	(45)	-0.6%
RECO	7	3.2%	5	2.0%	4	1.5%
UGI	(1)	-0.7%	(3)	-1.2%	(4)	-1.7%
 PJM MID-ATLANTIC	 (243)	 -0.5%	 (144)	 -0.3%	 (41)	 -0.1%
 FE/GPU	 (44)	 -0.5%	 (59)	 -0.6%	 (67)	 -0.6%
PLGRP	9	0.1%	35	0.5%	75	0.9%

**Table A-2**

**PJM WESTERN, PJM SOUTHERN AND PJM RTO  
WINTER PEAK LOAD COMPARISONS OF THE CURRENT FORECAST  
TO THE JANUARY 2007 LOAD FORECAST REPORT**

**INCREASE OR DECREASE OVER PRIOR FORECAST**

	<b>07/08</b>		<b>12/13</b>		<b>16/17</b>	
	<b>MW</b>	<b>%</b>	<b>MW</b>	<b>%</b>	<b>MW</b>	<b>%</b>
AEP	(476)	-2.1%	(432)	-1.8%	(371)	-1.5%
APS	(21)	-0.2%	(11)	-0.1%	37	0.4%
COMED	(22)	-0.1%	(115)	-0.7%	(4)	0.0%
DAY	(36)	-1.2%	(67)	-2.1%	(93)	-2.8%
DLCO	(6)	-0.3%	3	0.1%	5	0.2%
PJM WESTERN	(439)	-0.9%	(429)	-0.8%	(384)	-0.7%
DOM	(29)	-0.2%	14	0.1%	26	0.1%
PJM RTO	(613)	-0.5%	(347)	-0.3%	(139)	-0.1%



**PJM CONTROL AREA - JANUARY 2008  
UNRESTRICTED PEAK FORECAST: SUMMER/WINTER  
2008-2018**

**SUMMER UNRESTRICTED PEAK (MW)**

		<b>2008</b>	<b>2009</b>	<b>2010</b>	<b>2011</b>	<b>2012</b>	<b>2013</b>	<b>2014</b>	<b>2015</b>	<b>2016</b>	<b>2017</b>	<b>2018</b>	<b>Annual Growth Rate (10 yr)</b>
PJM MID-ATLANTIC		60,735	61,822	62,885	63,920	64,748	65,850	66,818	67,741	68,679	69,599	70,472	1.5%
	%		1.8%	1.7%	1.6%	1.3%	1.7%	1.5%	1.4%	1.4%	1.3%	1.3%	
PJM WESTERN		61,407	62,497	63,446	64,272	65,114	66,090	67,010	67,901	68,727	69,500	70,320	1.4%
	%		1.8%	1.5%	1.3%	1.3%	1.5%	1.4%	1.3%	1.2%	1.1%	1.2%	
PJM SOUTHERN		19,353	19,743	20,192	20,538	20,895	21,315	21,704	22,084	22,441	22,824	23,157	1.8%
	%		2.0%	2.3%	1.7%	1.7%	2.0%	1.8%	1.8%	1.6%	1.7%	1.5%	
PJM RTO		137,948	140,407	142,884	145,061	147,183	149,495	151,675	153,933	156,030	158,176	160,107	1.5%
	%		1.8%	1.8%	1.5%	1.5%	1.6%	1.5%	1.5%	1.4%	1.4%	1.2%	

**WINTER UNRESTRICTED PEAK (MW)**

		<b>07/08</b>	<b>08/09</b>	<b>09/010</b>	<b>010/11</b>	<b>11/12</b>	<b>12/13</b>	<b>13/14</b>	<b>14/15</b>	<b>15/16</b>	<b>16/17</b>	<b>17/18</b>	<b>Annual Growth Rate (10 yr)</b>
PJM MID-ATLANTIC		46,651	47,101	47,778	48,413	48,997	49,529	50,023	50,582	51,155	51,776	52,310	1.2%
	%		1.0%	1.4%	1.3%	1.2%	1.1%	1.0%	1.1%	1.1%	1.2%	1.0%	
PJM WESTERN		51,105	51,511	52,193	52,808	53,360	53,816	54,240	54,786	55,368	56,070	56,519	1.0%
	%		0.8%	1.3%	1.2%	1.0%	0.9%	0.8%	1.0%	1.1%	1.3%	0.8%	
PJM SOUTHERN		16,861	17,043	17,395	17,657	17,900	18,146	18,399	18,646	18,927	19,203	19,422	1.4%
	%		1.1%	2.1%	1.5%	1.4%	1.4%	1.4%	1.3%	1.5%	1.5%	1.1%	
PJM RTO		113,565	114,728	116,408	117,871	119,240	120,569	121,685	123,165	124,545	125,996	127,250	1.1%
	%		1.0%	1.5%	1.3%	1.2%	1.1%	0.9%	1.2%	1.1%	1.2%	1.0%	

Note:

Projected PJM seasonal peak load under normal peak weather conditions in the absence of any load reductions due to active load management, voltage reductions or voluntary curtailments.

**PJM CONTROL AREA - JANUARY 2008  
UNRESTRICTED PEAK FORECAST: SUMMER/WINTER  
2019-2023**

**SUMMER UNRESTRICTED PEAK (MW)**

		<b>2019</b>	<b>2020</b>	<b>2021</b>	<b>2022</b>	<b>2023</b>	<b>Annual Growth Rate (15 yr)</b>
PJM MID-ATLANTIC		71,478	72,425	73,358	74,374	75,367	1.4%
	%	1.4%	1.3%	1.3%	1.4%	1.3%	
PJM WESTERN		71,162	71,964	72,705	73,472	74,238	1.3%
	%	1.2%	1.1%	1.0%	1.1%	1.0%	
PJM SOUTHERN		23,489	23,813	24,089	24,403	24,731	1.6%
	%	1.4%	1.4%	1.2%	1.3%	1.3%	
PJM RTO		162,132	164,209	166,179	168,258	170,367	1.4%
	%	1.3%	1.3%	1.2%	1.3%	1.3%	

**WINTER UNRESTRICTED PEAK (MW)**

		<b>18/19</b>	<b>19/20</b>	<b>20/21</b>	<b>21/22</b>	<b>22/23</b>	<b>Annual Growth Rate (15 yr)</b>
PJM MID-ATLANTIC		52,835	53,255	53,884	54,536	55,114	1.1%
	%	1.0%	0.8%	1.2%	1.2%	1.1%	
PJM WESTERN		56,907	57,214	57,781	58,395	58,897	1.0%
	%	0.7%	0.5%	1.0%	1.1%	0.9%	
PJM SOUTHERN		19,645	19,824	20,047	20,273	20,498	1.3%
	%	1.1%	0.9%	1.1%	1.1%	1.1%	
PJM RTO		128,497	129,475	130,819	132,219	133,518	1.1%
	%	1.0%	0.8%	1.0%	1.1%	1.0%	

Note:

Projected PJM seasonal peak load under normal peak weather conditions in the absence of any load reductions due to active load management, voltage reductions or voluntary curtailments.

**Table B-1**  
**SUMMER PEAK LOAD (MW) AND GROWTH RATES FOR**  
**EACH PJM MID-ATLANTIC GEOGRAPHIC ZONE AND SUM OF GEOGRAPHIC ZONES**  
**2008-2018**

	METERED	UNRESTRICTED	NORMAL												Annual
	2007	2007	2007	2008	2009	2010	2011	2012	2013	2014	2015	2016	2017	2018	Growth Rate
															(10 yr)
AE	2,971	3,020	2,760	2,829	2,897	2,975	3,155	3,221	3,358	3,440	3,498	3,571	3,622	3,673	2.6%
%				2.5%	2.4%	2.7%	6.1%	2.1%	4.3%	2.4%	1.7%	2.1%	1.4%	1.4%	
BGE	7,113	7,477	7,260	7,344	7,455	7,555	7,626	7,693	7,783	7,858	7,930	7,981	8,054	8,118	1.0%
%				1.2%	1.5%	1.3%	0.9%	0.9%	1.2%	1.0%	0.9%	0.6%	0.9%	0.8%	
DPL	4,265	4,422	4,130	4,192	4,278	4,360	4,442	4,522	4,617	4,699	4,781	4,874	4,970	5,047	1.9%
%				1.5%	2.1%	1.9%	1.9%	1.8%	2.1%	1.8%	1.7%	1.9%	2.0%	1.5%	
JCPL	6,152	6,313	6,370	6,478	6,636	6,804	6,947	7,061	7,205	7,346	7,485	7,637	7,773	7,897	2.0%
%				1.7%	2.4%	2.5%	2.1%	1.6%	2.0%	2.0%	1.9%	2.0%	1.8%	1.6%	
METED	2,934	2,995	2,890	2,929	2,982	3,044	3,094	3,132	3,186	3,234	3,284	3,339	3,387	3,432	1.6%
%				1.3%	1.8%	2.1%	1.6%	1.2%	1.7%	1.5%	1.5%	1.7%	1.4%	1.3%	
PECO	8,549	8,851	8,630	8,759	8,909	9,055	9,183	9,309	9,447	9,577	9,702	9,826	9,955	10,085	1.4%
%				1.5%	1.7%	1.6%	1.4%	1.4%	1.5%	1.4%	1.3%	1.3%	1.3%	1.3%	
PENLC	2,881	2,901	2,820	2,850	2,892	2,930	2,963	2,985	3,023	3,054	3,082	3,111	3,136	3,157	1.0%
%				1.1%	1.5%	1.3%	1.1%	0.7%	1.3%	1.0%	0.9%	0.9%	0.8%	0.7%	
PEPCO	6,858	6,892	6,950	7,057	7,159	7,252	7,335	7,424	7,541	7,645	7,744	7,838	7,939	8,046	1.3%
%				1.5%	1.4%	1.3%	1.1%	1.2%	1.6%	1.4%	1.3%	1.2%	1.3%	1.3%	
PL	7,141	7,304	7,200	7,292	7,420	7,536	7,643	7,731	7,853	7,951	8,061	8,172	8,275	8,379	1.4%
%				1.3%	1.8%	1.6%	1.4%	1.2%	1.6%	1.2%	1.4%	1.4%	1.3%	1.3%	
PS	10,239	10,475	10,820	10,967	11,158	11,340	11,501	11,642	11,812	11,990	12,151	12,309	12,470	12,622	1.4%
%				1.4%	1.7%	1.6%	1.4%	1.2%	1.5%	1.5%	1.3%	1.3%	1.3%	1.2%	
RECO	423	423	430	435	441	447	452	456	461	467	472	477	481	486	1.1%
%				1.2%	1.4%	1.4%	1.1%	0.9%	1.1%	1.3%	1.1%	1.1%	0.8%	1.0%	
UGI	194	194	195	197	199	202	204	205	208	210	213	215	217	219	1.1%
%				1.0%	1.0%	1.5%	1.0%	0.5%	1.5%	1.0%	1.4%	0.9%	0.9%	0.9%	
DIVERSITY (-)				594	604	615	625	633	644	653	662	671	680	689	
PJM MID-ATLANTIC	59,553	61,192		60,735	61,822	62,885	63,920	64,748	65,850	66,818	67,741	68,679	69,599	70,472	1.5%
%					1.8%	1.7%	1.6%	1.3%	1.7%	1.5%	1.4%	1.4%	1.3%	1.3%	
FE/GPU	11,685	12,209	11,911	12,086	12,335	12,599	12,822	12,994	13,226	13,443	13,657	13,890	14,096	14,283	1.7%
%				1.5%	2.1%	2.1%	1.8%	1.3%	1.8%	1.6%	1.6%	1.7%	1.5%	1.3%	
PLGRP	7,230	7,497	7,392	7,486	7,616	7,735	7,844	7,932	8,057	8,157	8,270	8,383	8,488	8,594	1.4%
%				1.3%	1.7%	1.6%	1.4%	1.1%	1.6%	1.2%	1.4%	1.4%	1.3%	1.2%	

Note:

Normal 2007 and all forecast values are non-coincident as estimated by PJM staff.

Normal 2007 and all forecast values represent unrestricted peaks.

Forecasted and weather-normalized values for FE/GPU and PLGRP are calculated as the diversified sum of zonal non-coincident values.

Table B-1 (Continued)

**SUMMER PEAK LOAD (MW) AND GROWTH RATES FOR  
EACH PJM MID-ATLANTIC GEOGRAPHIC ZONE AND SUM OF GEOGRAPHIC ZONES  
2019-2023**

		<b>2019</b>	<b>2020</b>	<b>2021</b>	<b>2022</b>	<b>2023</b>	<b>Annual Growth Rate (15 yr)</b>
AE		3,733	3,790	3,852	3,918	3,976	2.3%
	%	1.6%	1.5%	1.6%	1.7%	1.5%	
BGE		8,204	8,276	8,335	8,404	8,480	1.0%
	%	1.1%	0.9%	0.7%	0.8%	0.9%	
DPL		5,150	5,236	5,335	5,440	5,544	1.9%
	%	2.0%	1.7%	1.9%	2.0%	1.9%	
JCPL		8,035	8,173	8,322	8,474	8,622	1.9%
	%	1.7%	1.7%	1.8%	1.8%	1.7%	
METED		3,490	3,546	3,601	3,661	3,715	1.6%
	%	1.7%	1.6%	1.6%	1.7%	1.5%	
PECO		10,213	10,334	10,460	10,592	10,729	1.4%
	%	1.3%	1.2%	1.2%	1.3%	1.3%	
PENLC		3,185	3,212	3,237	3,263	3,288	1.0%
	%	0.9%	0.8%	0.8%	0.8%	0.8%	
PEPCO		8,156	8,259	8,352	8,461	8,567	1.3%
	%	1.4%	1.3%	1.1%	1.3%	1.3%	
PL		8,506	8,626	8,735	8,859	8,975	1.4%
	%	1.5%	1.4%	1.3%	1.4%	1.3%	
PS		12,792	12,960	13,119	13,294	13,466	1.4%
	%	1.3%	1.3%	1.2%	1.3%	1.3%	
RECO		491	497	501	506	511	1.1%
	%	1.0%	1.2%	0.8%	1.0%	1.0%	
UGI		222	224	226	229	231	1.1%
	%	1.4%	0.9%	0.9%	1.3%	0.9%	
DIVERSITY (-)		699	708	717	727	737	
PJM MID-ATLANTIC		71,478	72,425	73,358	74,374	75,367	1.4%
	%	1.4%	1.3%	1.3%	1.4%	1.3%	
FE/GPU		14,504	14,722	14,948	15,183	15,406	1.6%
	%	1.5%	1.5%	1.5%	1.6%	1.5%	
PLGRP		8,724	8,846	8,957	9,084	9,202	1.4%
	%	1.5%	1.4%	1.3%	1.4%	1.3%	

Note:

Normal 2007 and all forecast values are non-coincident as estimated by PJM staff.

Normal 2007 and all forecast values represent unrestricted peaks.

Forecasted and weather-normalized values for FE/GPU and PLGRP are calculated as the diversified sum of zonal non-coincident values.

**Table B-1**

**SUMMER PEAK LOAD (MW) AND GROWTH RATES FOR  
EACH PJM WESTERN AND PJM SOUTHERN GEOGRAPHIC ZONE AND SUM OF GEOGRAPHIC ZONES  
2008-2018**

		<b>METERED</b>	<b>UNRESTRICTED</b>	<b>NORMAL</b>												<b>Annual</b>
		<b>2007</b>	<b>2007</b>	<b>2007</b>	<b>2008</b>	<b>2009</b>	<b>2010</b>	<b>2011</b>	<b>2012</b>	<b>2013</b>	<b>2014</b>	<b>2015</b>	<b>2016</b>	<b>2017</b>	<b>2018</b>	<b>Growth Rate</b>
																<b>(10 yr)</b>
AEP		24,934	25,301	23,810	23,939	24,311	24,640	24,915	25,188	25,485	25,737	26,017	26,277	26,490	26,736	1.1%
	%				0.5%	1.6%	1.4%	1.1%	1.1%	1.2%	1.0%	1.1%	1.0%	0.8%	0.9%	
APS		8,607	8,638	8,620	8,688	8,783	8,872	8,951	9,030	9,124	9,203	9,276	9,338	9,410	9,475	0.9%
	%				0.8%	1.1%	1.0%	0.9%	0.9%	1.0%	0.9%	0.8%	0.7%	0.8%	0.7%	
COMED		21,972	21,972	23,150	23,654	24,219	24,693	25,124	25,571	26,102	26,639	27,135	27,608	28,057	28,524	1.9%
	%				2.2%	2.4%	2.0%	1.7%	1.8%	2.1%	1.9%	1.7%	1.6%	1.7%		
DAY		3,746	3,748	3,560	3,597	3,644	3,688	3,722	3,759	3,803	3,839	3,874	3,902	3,930	3,962	1.0%
	%				1.0%	1.3%	1.2%	0.9%	1.0%	1.2%	0.9%	0.9%	0.7%	0.7%	0.8%	
DLCO		2,890	2,890	2,920	2,942	2,978	3,013	3,039	3,064	3,097	3,134	3,162	3,184	3,212	3,241	1.0%
	%				0.8%	1.2%	1.2%	0.9%	0.8%	1.1%	1.2%	0.9%	0.7%	0.9%	0.9%	
DIVERSITY (-)					1,413	1,438	1,460	1,479	1,498	1,521	1,542	1,563	1,582	1,599	1,618	
PJM WESTERN		60,435	60,835		61,407	62,497	63,446	64,272	65,114	66,090	67,010	67,901	68,727	69,500	70,320	1.4%
	%					1.8%	1.5%	1.3%	1.3%	1.5%	1.4%	1.3%	1.2%	1.1%	1.2%	
DOM		19,688	20,083	19,060	19,353	19,743	20,192	20,538	20,895	21,315	21,704	22,084	22,441	22,824	23,157	1.8%
	%				1.5%	2.0%	2.3%	1.7%	1.7%	2.0%	1.8%	1.8%	1.6%	1.7%	1.5%	
DIVERSITY (-)					3,547	3,655	3,639	3,669	3,574	3,760	3,857	3,793	3,817	3,747	3,842	
PJM RTO		139,568	141,383	136,095	137,948	140,407	142,884	145,061	147,183	149,495	151,675	153,933	156,030	158,176	160,107	1.5%
	%				1.4%	1.8%	1.8%	1.5%	1.5%	1.6%	1.5%	1.5%	1.4%	1.4%	1.2%	

Note:  
Normal 2007 and all forecast values are non-coincident as estimated by PJM staff.  
Normal 2007 and all forecast values represent unrestricted peaks.

Table B-1 (Continued)

SUMMER PEAK LOAD (MW) AND GROWTH RATES FOR  
EACH PJM WESTERN AND PJM SOUTHERN GEOGRAPHIC ZONE AND SUM OF GEOGRAPHIC ZONES  
2019-2023

		2019	2020	2021	2022	2023	Annual Growth Rate (15 yr)
AEP		26,961	27,171	27,389	27,602	27,768	1.0%
	%	0.8%	0.8%	0.8%	0.8%	0.6%	
APS		9,548	9,622	9,682	9,747	9,822	0.8%
	%	0.8%	0.8%	0.6%	0.7%	0.8%	
COMED		29,025	29,502	29,936	30,390	30,878	1.8%
	%	1.8%	1.6%	1.5%	1.5%	1.6%	
DAY		3,997	4,025	4,048	4,073	4,097	0.9%
	%	0.9%	0.7%	0.6%	0.6%	0.6%	
DLCO		3,269	3,300	3,323	3,351	3,381	0.9%
	%	0.9%	0.9%	0.7%	0.8%	0.9%	
DIVERSITY (-)		1,638	1,656	1,673	1,691	1,708	
PJM WESTERN		71,162	71,964	72,705	73,472	74,238	1.3%
	%	1.2%	1.1%	1.0%	1.1%	1.0%	
DOM		23,489	23,813	24,089	24,403	24,731	1.6%
	%	1.4%	1.4%	1.2%	1.3%	1.3%	
DIVERSITY (-)		3,997	3,993	3,973	3,991	3,969	
PJM RTO		162,132	164,209	166,179	168,258	170,367	1.4%
	%	1.3%	1.3%	1.2%	1.3%	1.3%	

Note:

Normal 2007 and all forecast values are non-coincident as estimated by PJM staff.

Normal 2007 and all forecast values represent unrestricted peaks.

Table B-2

**WINTER PEAK LOAD (MW) AND GROWTH RATES FOR  
EACH PJM MID-ATLANTIC GEOGRAPHIC ZONE AND SUM OF GEOGRAPHIC ZONES  
2007/08-2017/18**

	METERED 06/07	UNRESTRICTED 06/07	NORMAL 06/07	07/08	08/09	09/10	10/11	11/12	12/13	13/14	14/15	15/16	16/17	17/18	Annual Growth Rate (10 yr)
AE	1,792	1,792	1,810	1,846	1,880	1,925	1,964	2,062	2,105	2,172	2,211	2,245	2,285	2,314	2.3%
%				2.0%	1.8%	2.4%	2.0%	5.0%	2.1%	3.2%	1.8%	1.5%	1.8%	1.3%	
BGE	6,347	6,347	5,980	6,009	6,047	6,105	6,156	6,191	6,222	6,254	6,287	6,329	6,367	6,400	0.6%
%				0.5%	0.6%	1.0%	0.8%	0.6%	0.5%	0.5%	0.5%	0.7%	0.6%	0.5%	
DPL	3,603	3,603	3,360	3,397	3,442	3,497	3,547	3,598	3,642	3,685	3,743	3,798	3,857	3,908	1.4%
%				1.1%	1.3%	1.6%	1.4%	1.4%	1.2%	1.2%	1.6%	1.5%	1.6%	1.3%	
JCPL	4,075	4,075	3,970	4,013	4,066	4,152	4,227	4,300	4,357	4,404	4,482	4,560	4,638	4,699	1.6%
%				1.1%	1.3%	2.1%	1.8%	1.7%	1.3%	1.1%	1.8%	1.7%	1.7%	1.3%	
METED	2,624	2,624	2,540	2,575	2,596	2,634	2,677	2,710	2,740	2,767	2,799	2,832	2,874	2,906	1.2%
%				1.4%	0.8%	1.5%	1.6%	1.2%	1.1%	1.0%	1.2%	1.2%	1.5%	1.1%	
PECO	6,835	6,835	6,530	6,602	6,682	6,780	6,880	6,960	7,037	7,104	7,189	7,277	7,377	7,449	1.2%
%				1.1%	1.2%	1.5%	1.5%	1.2%	1.1%	1.0%	1.2%	1.2%	1.4%	1.0%	
PENLC	2,895	2,895	2,790	2,820	2,835	2,874	2,914	2,945	2,972	2,987	3,014	3,042	3,081	3,100	1.0%
%				1.1%	0.5%	1.4%	1.4%	1.1%	0.9%	0.5%	0.9%	0.9%	1.3%	0.6%	
PEPCO	5,606	5,606	5,320	5,381	5,432	5,501	5,568	5,629	5,681	5,750	5,807	5,881	5,955	6,019	1.1%
%				1.1%	0.9%	1.3%	1.2%	1.1%	0.9%	1.2%	1.0%	1.3%	1.3%	1.1%	
PL	7,577	7,577	7,160	7,232	7,281	7,374	7,451	7,520	7,579	7,633	7,704	7,780	7,871	7,939	0.9%
%				1.0%	0.7%	1.3%	1.0%	0.9%	0.8%	0.7%	0.9%	1.0%	1.2%	0.9%	
PS	7,050	7,050	7,000	7,070	7,137	7,249	7,360	7,465	7,538	7,599	7,699	7,798	7,922	7,996	1.2%
%				1.0%	0.9%	1.6%	1.5%	1.4%	1.0%	0.8%	1.3%	1.3%	1.6%	0.9%	
RECO	240	240	240	241	242	243	243	244	245	246	247	248	249	249	0.3%
%				0.4%	0.4%	0.4%	0.0%	0.4%	0.4%	0.4%	0.4%	0.4%	0.4%	0.0%	
UGI	202	202	200	201	202	204	206	208	209	210	212	214	216	217	0.8%
%				0.5%	0.5%	1.0%	1.0%	1.0%	0.5%	0.5%	1.0%	0.9%	0.9%	0.5%	
DIVERSITY (-)				736	741	760	780	835	798	788	812	849	916	886	
PJM MID-ATLANTIC	48,543	48,543		46,651	47,101	47,778	48,413	48,997	49,529	50,023	50,582	51,155	51,776	52,310	1.2%
%					1.0%	1.4%	1.3%	1.2%	1.1%	1.0%	1.1%	1.1%	1.2%	1.0%	
FE/GPU	9,593	9,593	9,231	9,335	9,427	9,587	9,734	9,863	9,985	10,083	10,219	10,342	10,481	10,601	1.3%
%				1.1%	1.0%	1.7%	1.5%	1.3%	1.2%	1.0%	1.3%	1.2%	1.3%	1.1%	
PLGRP	7,779	7,779	7,356	7,429	7,479	7,574	7,653	7,724	7,784	7,839	7,912	7,990	8,083	8,152	0.9%
%				1.0%	0.7%	1.3%	1.0%	0.9%	0.8%	0.7%	0.9%	1.0%	1.2%	0.9%	

Note:

Normal 06/07 and all forecast values are non-coincident as estimated by PJM staff.

Normal 06/07 and all forecast values represent unrestricted peaks.

Forecasted values for PLGRP and FE/GPU are calculated as the diversified sum of zonal non-coincident forecasts.

Table B-2 (Continued)

**WINTER PEAK LOAD (MW) AND GROWTH RATES FOR  
EACH PJM MID-ATLANTIC GEOGRAPHIC ZONE AND SUM OF GEOGRAPHIC ZONES  
2018/19-2022/23**

		<b>18/19</b>	<b>19/20</b>	<b>20/21</b>	<b>21/22</b>	<b>22/23</b>	<b>Annual Growth Rate (15 yr)</b>
AE		2,349	2,366	2,405	2,444	2,485	2.0%
	%	1.5%	0.7%	1.6%	1.6%	1.7%	
BGE		6,432	6,456	6,498	6,544	6,578	0.6%
	%	0.5%	0.4%	0.7%	0.7%	0.5%	
DPL		3,958	4,005	4,075	4,139	4,202	1.4%
	%	1.3%	1.2%	1.7%	1.6%	1.5%	
JCPL		4,762	4,801	4,890	4,970	5,049	1.5%
	%	1.3%	0.8%	1.9%	1.6%	1.6%	
METED		2,942	2,968	3,007	3,051	3,090	1.2%
	%	1.2%	0.9%	1.3%	1.5%	1.3%	
PECO		7,529	7,585	7,682	7,780	7,865	1.2%
	%	1.1%	0.7%	1.3%	1.3%	1.1%	
PENLC		3,126	3,133	3,161	3,194	3,223	0.9%
	%	0.8%	0.2%	0.9%	1.0%	0.9%	
PEPCO		6,082	6,140	6,204	6,282	6,355	1.1%
	%	1.0%	1.0%	1.0%	1.3%	1.2%	
PL		8,008	8,059	8,148	8,240	8,320	0.9%
	%	0.9%	0.6%	1.1%	1.1%	1.0%	
PS		8,079	8,131	8,245	8,358	8,468	1.2%
	%	1.0%	0.6%	1.4%	1.4%	1.3%	
RECO		250	251	252	253	254	0.4%
	%	0.4%	0.4%	0.4%	0.4%	0.4%	
UGI		219	220	222	224	226	0.8%
	%	0.9%	0.5%	0.9%	0.9%	0.9%	
DIVERSITY (-)		901	860	905	943	1,001	
PJM MID-ATLANTIC		52,835	53,255	53,884	54,536	55,114	1.1%
	%	1.0%	0.8%	1.2%	1.2%	1.1%	
FE/GPU		10,727	10,821	10,959	11,103	11,239	1.2%
	%	1.2%	0.9%	1.3%	1.3%	1.2%	
PLGRP		8,223	8,275	8,366	8,460	8,542	0.9%
	%	0.9%	0.6%	1.1%	1.1%	1.0%	

Note:

Normal 06/07 and all forecast values are non-coincident as estimated by PJM staff.

Normal 06/07 and all forecast values represent unrestricted peaks.

Forecasted values for PLGRP and FE/GPU are calculated as the diversified sum of zonal non-coincident forecasts.



Table B-2

WINTER PEAK LOAD (MW) AND GROWTH RATES FOR  
EACH PJM WESTERN AND PJM SOUTHERN GEOGRAPHIC ZONE AND SUM OF GEOGRAPHIC ZONES  
2007/08-2017/18

	METERED	UNRESTRICTED	NORMAL													Annual
	06/07	06/07	06/07	07/08	08/09	09/10	10/11	11/12	12/13	13/14	14/15	15/16	16/17	17/18		Growth Rate
																(10 yr)
AEP	24,168	24,168	22,520	22,588	22,677	22,950	23,179	23,394	23,539	23,620	23,830	24,021	24,288	24,420		0.8%
%				0.3%	0.4%	1.2%	1.0%	0.9%	0.6%	0.3%	0.9%	0.8%	1.1%	0.5%		
APS	8,664	8,664	8,490	8,523	8,558	8,651	8,744	8,811	8,841	8,890	8,950	9,027	9,114	9,156		0.7%
%				0.4%	0.4%	1.1%	1.1%	0.8%	0.3%	0.6%	0.7%	0.9%	1.0%	0.5%		
COMED	16,207	16,207	15,860	16,129	16,331	16,657	16,955	17,263	17,514	17,659	17,987	18,301	18,715	18,952		1.6%
%				1.7%	1.3%	2.0%	1.8%	1.8%	1.5%	0.8%	1.9%	1.7%	2.3%	1.3%		
DAY	3,103	3,103	3,000	3,012	3,024	3,056	3,088	3,113	3,130	3,142	3,163	3,187	3,221	3,235		0.7%
%				0.4%	0.4%	1.1%	1.0%	0.8%	0.5%	0.4%	0.7%	0.8%	1.1%	0.4%		
DLCO	2,235	2,235	2,150	2,153	2,165	2,176	2,188	2,199	2,211	2,222	2,234	2,245	2,257	2,268		0.5%
%				0.1%	0.6%	0.5%	0.6%	0.5%	0.5%	0.5%	0.5%	0.5%	0.5%	0.5%		
DIVERSITY (-)				1,300	1,244	1,297	1,346	1,420	1,419	1,293	1,378	1,413	1,525	1,512		
PJM WESTERN	53,979	53,979		51,105	51,511	52,193	52,808	53,360	53,816	54,240	54,786	55,368	56,070	56,519		1.0%
%					0.8%	1.3%	1.2%	1.0%	0.9%	0.8%	1.0%	1.1%	1.3%	0.8%		
DOM	18,079	18,079	16,650	16,861	17,043	17,395	17,657	17,900	18,146	18,399	18,646	18,927	19,203	19,422		1.4%
%				1.3%	1.1%	2.1%	1.5%	1.4%	1.4%	1.4%	1.3%	1.5%	1.5%	1.1%		
DIVERSITY (-)				1,052	927	958	1,007	1,017	922	977	849	905	1,053	1,001		
PJM RTO	118,800	118,800	112,455	113,565	114,728	116,408	117,871	119,240	120,569	121,685	123,165	124,545	125,996	127,250		1.1%
%				1.0%	1.0%	1.5%	1.3%	1.2%	1.1%	0.9%	1.2%	1.1%	1.2%	1.0%		

Note:  
Normal 06/07 and all forecast values are non-coincident as estimated by PJM staff.  
Normal 06/07 and all forecast values represent unrestricted peaks.

Table B-2 (Continued)

WINTER PEAK LOAD (MW) AND GROWTH RATES FOR  
EACH PJM WESTERN AND PJM SOUTHERN GEOGRAPHIC ZONE AND SUM OF GEOGRAPHIC ZONES  
2018/19-2022/23

		18/19	19/20	20/21	21/22	22/23	Annual Growth Rate (15 yr)
AEP		24,540	24,560	24,774	24,968	25,143	0.7%
	%	0.5%	0.1%	0.9%	0.8%	0.7%	
APS		9,181	9,221	9,301	9,377	9,434	0.7%
	%	0.3%	0.4%	0.9%	0.8%	0.6%	
COMED		19,231	19,339	19,644	20,002	20,340	1.6%
	%	1.5%	0.6%	1.6%	1.8%	1.7%	
DAY		3,251	3,254	3,277	3,304	3,323	0.7%
	%	0.5%	0.1%	0.7%	0.8%	0.6%	
DLCO		2,280	2,291	2,303	2,314	2,326	0.5%
	%	0.5%	0.5%	0.5%	0.5%	0.5%	
DIVERSITY (-)		1,576	1,451	1,518	1,570	1,669	
PJM WESTERN		56,907	57,214	57,781	58,395	58,897	1.0%
	%	0.7%	0.5%	1.0%	1.1%	0.9%	
DOM		19,645	19,824	20,047	20,273	20,498	1.3%
	%	1.1%	0.9%	1.1%	1.1%	1.1%	
DIVERSITY (-)		890	818	893	985	991	
PJM RTO		128,497	129,475	130,819	132,219	133,518	1.1%
	%	1.0%	0.8%	1.0%	1.1%	1.0%	

Note:  
Normal 06/07 and all forecast values are non-coincident as estimated by PJM staff.  
Normal 06/07 and all forecast values represent unrestricted peaks.

**Table B-3**  
**SPRING (APRIL) PEAK LOAD (MW) FOR**  
**EACH PJM MID-ATLANTIC GEOGRAPHIC ZONE AND SUM OF GEOGRAPHIC ZONES**  
**2008-2023**

	<b>2008</b>	<b>2009</b>	<b>2010</b>	<b>2011</b>	<b>2012</b>	<b>2013</b>	<b>2014</b>	<b>2015</b>	<b>2016</b>	<b>2017</b>	<b>2018</b>	<b>2019</b>	<b>2020</b>	<b>2021</b>	<b>2022</b>	<b>2023</b>
AE	1,587	1,628	1,675	1,761	1,850	1,924	2,013	2,052	2,087	2,117	2,171	2,205	2,253	2,284	2,315	2,352
BGE	4,940	4,988	5,039	5,056	5,085	5,134	5,205	5,256	5,242	5,252	5,340	5,387	5,449	5,476	5,511	5,495
DPL	2,739	2,785	2,825	2,846	2,887	2,939	2,990	3,040	3,065	3,109	3,179	3,236	3,293	3,321	3,369	3,427
JCPL	3,442	3,515	3,596	3,666	3,719	3,789	3,886	3,980	4,033	4,106	4,165	4,246	4,362	4,430	4,503	4,564
METED	2,269	2,290	2,320	2,348	2,395	2,427	2,454	2,469	2,502	2,542	2,580	2,617	2,626	2,653	2,704	2,761
PECO	5,734	5,869	5,988	5,956	6,056	6,125	6,247	6,373	6,371	6,450	6,534	6,597	6,774	6,881	6,856	6,940
PENLC	2,493	2,519	2,549	2,577	2,608	2,630	2,659	2,680	2,701	2,730	2,745	2,764	2,785	2,803	2,827	2,853
PEPCO	4,548	4,622	4,727	4,689	4,727	4,802	4,898	4,977	4,982	5,035	5,070	5,158	5,256	5,338	5,339	5,366
PL	5,918	5,977	6,065	6,130	6,220	6,303	6,383	6,445	6,529	6,620	6,702	6,786	6,849	6,920	7,010	7,118
PS	6,489	6,648	6,745	6,787	6,895	7,004	7,133	7,265	7,303	7,398	7,513	7,606	7,776	7,831	7,917	8,038
RECO	222	225	225	224	226	227	229	232	229	229	231	232	237	236	235	235
UGI	158	159	160	161	163	165	167	168	169	171	173	175	176	178	180	182
DIVERSITY (-)	1,275	1,296	1,318	1,327	1,347	1,367	1,392	1,413	1,422	1,439	1,459	1,478	1,504	1,521	1,534	1,551
PJM MID-ATLANTIC	39,264	39,929	40,596	40,874	41,484	42,102	42,872	43,524	43,791	44,320	44,944	45,531	46,332	46,830	47,232	47,780
FE/GPU	8,006	8,123	8,261	8,383	8,511	8,632	8,782	8,909	9,013	9,151	9,261	9,394	9,537	9,647	9,792	9,932
PLGRP	6,074	6,134	6,223	6,289	6,381	6,466	6,548	6,611	6,696	6,789	6,873	6,959	7,023	7,096	7,188	7,298

**Table B-3**

**SPRING (APRIL) PEAK LOAD (MW) FOR  
EACH PJM WESTERN AND PJM SOUTHERN GEOGRAPHIC ZONE AND SUM OF GEOGRAPHIC ZONES  
2008-2023**

	<b>2008</b>	<b>2009</b>	<b>2010</b>	<b>2011</b>	<b>2012</b>	<b>2013</b>	<b>2014</b>	<b>2015</b>	<b>2016</b>	<b>2017</b>	<b>2018</b>	<b>2019</b>	<b>2020</b>	<b>2021</b>	<b>2022</b>	<b>2023</b>
AEP	19,164	19,301	19,533	19,766	20,029	20,212	20,461	20,633	20,839	21,073	21,163	21,265	21,443	21,505	21,628	21,750
APS	7,019	7,056	7,114	7,167	7,234	7,270	7,321	7,352	7,401	7,463	7,501	7,531	7,555	7,587	7,644	7,707
COMED	14,392	14,734	15,070	15,327	15,653	16,080	16,380	16,696	16,967	17,293	17,847	18,233	18,542	18,808	19,032	19,407
DAY	2,576	2,604	2,630	2,642	2,674	2,698	2,725	2,742	2,753	2,781	2,795	2,816	2,838	2,852	2,864	2,888
DLCO	2,014	2,049	2,073	2,040	2,074	2,103	2,121	2,171	2,153	2,128	2,196	2,206	2,257	2,267	2,225	2,230
DIVERSITY (-)	1,209	1,224	1,242	1,256	1,276	1,294	1,312	1,327	1,341	1,358	1,378	1,393	1,409	1,419	1,429	1,445
PJM WESTERN	43,956	44,520	45,178	45,686	46,388	47,069	47,696	48,267	48,772	49,380	50,124	50,658	51,226	51,600	51,964	52,537
DOM	13,404	13,665	13,945	14,156	14,385	14,645	14,901	15,142	15,338	15,610	15,879	16,098	16,246	16,499	16,683	16,949
DIVERSITY (-)	2,967	3,089	3,201	2,622	2,777	2,742	3,217	2,961	2,493	2,585	2,871	2,737	2,928	3,021	2,532	2,646
PJM RTO	93,657	95,025	96,518	98,094	99,480	101,074	102,252	103,972	105,408	106,725	108,076	109,550	110,876	111,908	113,347	114,620

Table B-4

FALL (OCTOBER) PEAK LOAD (MW) FOR  
EACH PJM MID-ATLANTIC GEOGRAPHIC ZONE AND SUM OF GEOGRAPHIC ZONES  
2008-2023

	2008	2009	2010	2011	2012	2013	2014	2015	2016	2017	2018	2019	2020	2021	2022	2023
AE	1,665	1,713	1,765	1,900	1,977	2,093	2,135	2,176	2,206	2,268	2,323	2,362	2,399	2,434	2,473	2,528
BGE	4,704	4,763	4,796	4,850	4,958	5,002	5,018	5,038	5,052	5,143	5,226	5,261	5,264	5,279	5,317	5,408
DPL	2,662	2,708	2,748	2,801	2,878	2,924	2,965	3,010	3,057	3,125	3,189	3,241	3,295	3,351	3,401	3,477
JCPL	3,583	3,694	3,749	3,835	3,985	4,081	4,154	4,234	4,269	4,402	4,518	4,616	4,684	4,756	4,827	4,948
METED	2,164	2,201	2,226	2,270	2,319	2,356	2,381	2,405	2,433	2,483	2,530	2,564	2,590	2,616	2,652	2,703
PECO	5,749	5,860	5,945	5,976	6,213	6,305	6,369	6,444	6,471	6,646	6,792	6,871	6,936	7,011	7,045	7,220
PENLC	2,472	2,506	2,530	2,572	2,621	2,625	2,652	2,667	2,695	2,722	2,776	2,767	2,785	2,800	2,829	2,850
PEPCO	4,657	4,725	4,747	4,770	4,928	4,986	5,042	5,087	5,078	5,203	5,321	5,374	5,427	5,454	5,477	5,599
PL	5,658	5,757	5,811	5,894	5,991	6,072	6,127	6,181	6,253	6,359	6,460	6,533	6,574	6,630	6,711	6,829
PS	6,882	7,009	7,051	7,124	7,395	7,529	7,587	7,667	7,669	7,882	8,054	8,167	8,227	8,272	8,329	8,547
RECO	242	243	241	241	251	252	252	252	248	254	259	260	260	257	257	263
UGI	156	157	158	160	162	165	166	166	169	171	173	174	175	176	179	182
DIVERSITY (-)	872	888	898	911	939	954	964	974	980	1,003	1,023	1,036	1,045	1,054	1,064	1,086
PJM MID-ATLANTIC	39,722	40,448	40,869	41,482	42,739	43,436	43,884	44,353	44,620	45,655	46,598	47,154	47,571	47,982	48,433	49,468
FE/GPU	8,072	8,251	8,353	8,522	8,766	8,900	9,023	9,140	9,229	9,435	9,648	9,769	9,879	9,990	10,124	10,313
PLGRP	5,811	5,911	5,966	6,051	6,150	6,234	6,290	6,344	6,419	6,527	6,629	6,703	6,745	6,802	6,886	7,007

**Table B-4**

**FALL (OCTOBER) PEAK LOAD (MW) FOR  
EACH PJM WESTERN AND PJM SOUTHERN GEOGRAPHIC ZONE AND SUM OF GEOGRAPHIC ZONES  
2008-2023**

	<b>2008</b>	<b>2009</b>	<b>2010</b>	<b>2011</b>	<b>2012</b>	<b>2013</b>	<b>2014</b>	<b>2015</b>	<b>2016</b>	<b>2017</b>	<b>2018</b>	<b>2019</b>	<b>2020</b>	<b>2021</b>	<b>2022</b>	<b>2023</b>
AEP	18,416	18,623	18,734	18,974	19,331	19,536	19,688	19,779	19,914	20,161	20,391	20,545	20,638	20,703	20,837	21,044
APS	6,734	6,800	6,851	6,902	6,983	7,041	7,070	7,095	7,126	7,193	7,261	7,301	7,319	7,346	7,382	7,436
COMED	14,342	14,722	14,985	15,295	15,829	16,202	16,509	16,841	17,098	17,548	18,051	18,344	18,609	18,894	19,192	19,635
DAY	2,518	2,547	2,562	2,595	2,644	2,670	2,689	2,701	2,714	2,752	2,784	2,801	2,812	2,821	2,835	2,866
DLCO	1,939	1,960	1,972	1,989	2,027	2,049	2,063	2,076	2,077	2,114	2,140	2,156	2,169	2,171	2,183	2,217
DIVERSITY (-)	1,276	1,296	1,309	1,328	1,359	1,379	1,394	1,407	1,420	1,444	1,469	1,484	1,496	1,507	1,522	1,544
PJM WESTERN	42,673	43,356	43,795	44,427	45,455	46,119	46,625	47,085	47,509	48,324	49,158	49,663	50,051	50,428	50,907	51,654
DOM	13,432	13,695	13,847	14,109	14,598	14,861	15,097	15,285	15,460	15,850	16,146	16,342	16,536	16,616	16,782	17,156
DIVERSITY (-)	1,429	1,475	1,493	1,515	1,718	1,848	1,957	1,812	1,865	2,020	2,172	2,181	2,213	2,497	2,531	2,191
PJM RTO	94,398	96,024	97,018	98,503	101,074	102,568	103,649	104,911	105,724	107,809	109,730	110,978	111,945	112,529	113,591	116,087

Table B-5

MONTHLY PEAK FORECAST (MW) FOR EACH  
PJM MID-ATLANTIC GEOGRAPHIC ZONE AND DIVERSIFIED SUM OF GEOGRAPHIC ZONES

	<b>AE</b>	<b>BGE</b>	<b>DPL</b>	<b>JCPL</b>	<b>METED</b>	<b>PECO</b>	<b>PENLC</b>	<b>PEPCO</b>	<b>PL</b>	<b>PS</b>	<b>RECO</b>	<b>UGI</b>	<b>MID-ATLANTIC DIVERSITY</b>	<b>PJM MID- ATLANTIC</b>
Jan 2008	1,845	6,009	3,397	4,010	2,575	6,602	2,820	5,381	7,232	7,070	229	201	720	46,651
Feb 2008	1,776	5,778	3,293	3,819	2,509	6,367	2,756	5,197	6,982	6,812	216	192	699	44,998
Mar 2008	1,628	5,228	2,942	3,584	2,386	5,916	2,624	4,600	6,418	6,438	213	174	448	41,703
Apr 2008	1,587	4,940	2,739	3,442	2,269	5,734	2,493	4,548	5,918	6,489	222	158	1,275	39,264
May 2008	1,907	5,700	3,096	4,544	2,421	6,733	2,411	5,627	5,916	8,360	328	151	745	46,449
Jun 2008	2,486	6,671	3,804	5,777	2,760	8,117	2,751	6,532	6,853	10,027	394	182	490	55,864
Jul 2008	2,829	7,344	4,192	6,478	2,929	8,759	2,850	7,057	7,292	10,967	435	197	594	60,735
Aug 2008	2,703	6,990	4,024	5,831	2,821	8,382	2,793	6,742	6,999	10,104	387	187	557	57,406
Sep 2008	2,289	6,239	3,449	5,081	2,503	7,278	2,602	6,030	6,345	9,041	332	170	832	50,527
Oct 2008	1,665	4,704	2,662	3,583	2,164	5,749	2,472	4,657	5,658	6,882	242	156	872	39,722
Nov 2008	1,624	4,836	2,765	3,554	2,248	5,817	2,571	4,451	6,097	6,493	217	171	413	40,431
Dec 2008	1,880	5,705	3,261	4,046	2,533	6,518	2,812	5,159	6,941	7,108	242	201	291	46,115
	<b>AE</b>	<b>BGE</b>	<b>DPL</b>	<b>JCPL</b>	<b>METED</b>	<b>PECO</b>	<b>PENLC</b>	<b>PEPCO</b>	<b>PL</b>	<b>PS</b>	<b>RECO</b>	<b>UGI</b>	<b>DIVERSITY</b>	<b>MID-ATLANTIC</b>
Jan 2009	1,879	6,047	3,442	4,066	2,596	6,682	2,835	5,432	7,281	7,137	229	202	727	47,101
Feb 2009	1,812	5,801	3,339	3,877	2,529	6,449	2,770	5,229	7,025	6,879	216	193	705	45,414
Mar 2009	1,664	5,278	2,989	3,654	2,411	6,064	2,648	4,679	6,486	6,579	214	175	455	42,386
Apr 2009	1,628	4,988	2,785	3,515	2,290	5,869	2,519	4,622	5,977	6,648	225	159	1,296	39,929
May 2009	1,957	5,746	3,151	4,646	2,452	6,850	2,434	5,690	5,982	8,496	329	152	756	47,129
Jun 2009	2,548	6,788	3,879	5,920	2,806	8,250	2,786	6,614	6,962	10,178	399	184	498	56,816
Jul 2009	2,897	7,455	4,278	6,636	2,982	8,909	2,892	7,159	7,420	11,158	441	199	604	61,822
Aug 2009	2,765	7,082	4,103	5,988	2,868	8,515	2,834	6,830	7,118	10,264	392	189	566	58,382
Sep 2009	2,355	6,343	3,539	5,222	2,558	7,447	2,649	6,137	6,479	9,227	336	172	849	51,615
Oct 2009	1,713	4,763	2,708	3,694	2,201	5,860	2,506	4,725	5,757	7,009	243	157	888	40,448
Nov 2009	1,679	4,933	2,851	3,667	2,305	5,957	2,622	4,535	6,231	6,633	218	174	422	41,383
Dec 2009	1,925	5,801	3,335	4,152	2,578	6,639	2,855	5,238	7,061	7,237	243	203	296	46,971
	<b>AE</b>	<b>BGE</b>	<b>DPL</b>	<b>JCPL</b>	<b>METED</b>	<b>PECO</b>	<b>PENLC</b>	<b>PEPCO</b>	<b>PL</b>	<b>PS</b>	<b>RECO</b>	<b>UGI</b>	<b>DIVERSITY</b>	<b>MID-ATLANTIC</b>
Jan 2010	1,919	6,105	3,497	4,150	2,634	6,780	2,874	5,501	7,374	7,249	229	204	738	47,778
Feb 2010	1,858	5,881	3,405	3,975	2,576	6,567	2,815	5,313	7,153	7,021	218	195	718	46,259
Mar 2010	1,727	5,357	3,051	3,771	2,445	6,236	2,679	4,820	6,579	6,712	216	177	465	43,305
Apr 2010	1,675	5,039	2,825	3,596	2,320	5,988	2,549	4,727	6,065	6,745	225	160	1,318	40,596
May 2010	2,022	5,812	3,207	4,769	2,491	6,960	2,466	5,740	6,089	8,637	333	154	768	47,912
Jun 2010	2,623	6,890	3,959	6,132	2,875	8,412	2,829	6,735	7,093	10,416	407	186	509	58,048
Jul 2010	2,975	7,555	4,360	6,804	3,044	9,055	2,930	7,252	7,536	11,340	447	202	615	62,885
Aug 2010	2,838	7,189	4,176	6,151	2,931	8,661	2,870	6,929	7,226	10,443	397	192	576	59,427
Sep 2010	2,419	6,413	3,596	5,329	2,604	7,551	2,678	6,202	6,561	9,354	339	174	862	52,358
Oct 2010	1,765	4,796	2,748	3,749	2,226	5,945	2,530	4,747	5,811	7,051	241	158	898	40,869
Nov 2010	1,723	4,980	2,890	3,739	2,341	6,044	2,651	4,581	6,303	6,721	218	176	428	41,939
Dec 2010	1,964	5,831	3,369	4,227	2,621	6,736	2,904	5,288	7,138	7,360	243	204	300	47,585

Table B-5

MONTHLY PEAK FORECAST (MW) FOR EACH  
PJM WESTERN AND PJM SOUTHERN GEOGRAPHIC ZONE AND DIVERSIFIED SUM OF GEOGRAPHIC ZONES

	AEP	APS	COMED	DAY	DLCO	WESTERN DIVERSITY	PJM WESTERN	DOM	RTO DIVERSITY	PJM RTO
Jan 2008	22,588	8,523	15,850	3,012	2,142	1,010	51,105	16,861	1,052	113,565
Feb 2008	21,957	8,252	15,367	2,909	2,081	783	49,783	16,253	1,742	109,292
Mar 2008	20,435	7,516	14,455	2,677	1,989	790	46,282	14,188	2,633	99,540
Apr 2008	19,164	7,019	14,392	2,576	2,014	1,209	43,956	13,404	2,967	93,657
May 2008	19,831	6,956	16,828	2,824	2,283	1,217	47,505	15,358	4,558	104,754
Jun 2008	22,796	8,254	21,665	3,388	2,771	1,200	57,674	17,988	3,766	127,760
Jul 2008	23,939	8,688	23,654	3,597	2,942	1,413	61,407	19,353	3,547	137,948
Aug 2008	23,350	8,394	22,538	3,485	2,798	420	60,145	18,632	5,283	130,900
Sep 2008	21,304	7,709	19,453	3,151	2,530	703	53,444	16,443	3,980	116,434
Oct 2008	18,416	6,734	14,342	2,518	1,939	1,276	42,673	13,432	1,429	94,398
Nov 2008	19,356	7,191	14,577	2,609	1,951	629	45,055	13,420	806	98,100
Dec 2008	21,734	8,285	16,331	2,940	2,165	514	50,941	15,963	1,582	111,437
	AEP	APS	COMED	DAY	DLCO	WESTERN DIVERSITY	PJM WESTERN	DOM	RTO DIVERSITY	PJM RTO
Jan 2009	22,677	8,558	16,117	3,024	2,154	1,019	51,511	17,043	927	114,728
Feb 2009	21,965	8,273	15,658	2,915	2,089	789	50,111	16,375	1,502	110,398
Mar 2009	20,583	7,568	14,756	2,704	2,018	799	46,830	14,489	2,696	101,009
Apr 2009	19,301	7,056	14,734	2,604	2,049	1,224	44,520	13,665	3,089	95,025
May 2009	19,998	6,993	17,232	2,850	2,301	1,233	48,141	15,609	4,636	106,243
Jun 2009	23,083	8,321	22,131	3,423	2,804	1,218	58,544	18,278	3,684	129,954
Jul 2009	24,311	8,783	24,219	3,644	2,978	1,438	62,497	19,743	3,655	140,407
Aug 2009	23,704	8,470	22,994	3,528	2,819	427	61,088	19,002	5,389	133,083
Sep 2009	21,669	7,856	19,967	3,208	2,571	718	54,553	16,874	4,186	118,856
Oct 2009	18,623	6,800	14,722	2,547	1,960	1,296	43,356	13,695	1,475	96,024
Nov 2009	19,716	7,323	14,996	2,661	1,974	643	46,027	13,878	855	100,433
Dec 2009	22,041	8,385	16,657	2,976	2,176	522	51,713	16,332	1,847	113,169
	AEP	APS	COMED	DAY	DLCO	WESTERN DIVERSITY	PJM WESTERN	DOM	RTO DIVERSITY	PJM RTO
Jan 2010	22,950	8,651	16,401	3,056	2,167	1,032	52,193	17,395	958	116,408
Feb 2010	22,326	8,381	15,995	2,953	2,108	802	50,961	16,810	1,798	112,232
Mar 2010	20,791	7,646	15,188	2,730	2,036	812	47,579	14,819	2,768	102,935
Apr 2010	19,533	7,114	15,070	2,630	2,073	1,242	45,178	13,945	3,201	96,518
May 2010	20,265	7,073	17,675	2,887	2,325	1,254	48,971	15,955	4,762	108,076
Jun 2010	23,558	8,408	22,691	3,474	2,849	1,243	59,737	18,744	3,820	132,709
Jul 2010	24,640	8,872	24,693	3,688	3,013	1,460	63,446	20,192	3,639	142,884
Aug 2010	24,148	8,550	23,593	3,571	2,864	435	62,291	19,435	5,520	135,633
Sep 2010	21,921	7,900	20,366	3,235	2,588	727	55,283	17,188	3,964	120,865
Oct 2010	18,734	6,851	14,985	2,562	1,972	1,309	43,795	13,847	1,493	97,018
Nov 2010	19,916	7,389	15,284	2,688	1,992	651	46,618	14,116	624	102,049
Dec 2010	22,270	8,485	16,955	3,010	2,188	529	52,379	16,579	1,598	114,945



**Table B-6**

**MONTHLY PEAK FORECAST (MW)  
FOR FE/GPU AND PLGRP**

	<b>FE/GPU</b>	<b>PLGRP</b>
Jan 2008	9,335	7,429
Feb 2008	9,011	7,170
Mar 2008	8,540	6,591
Apr 2008	8,006	6,074
May 2008	9,146	6,062
Jun 2008	11,150	7,034
Jul 2008	12,086	7,486
Aug 2008	11,308	7,182
Sep 2008	10,038	6,509
Oct 2008	8,072	5,811
Nov 2008	8,328	6,265
Dec 2008	9,326	7,139
	<b>FE/GPU</b>	<b>PLGRP</b>
Jan 2009	9,427	7,479
Feb 2009	9,103	7,214
Mar 2009	8,658	6,660
Apr 2009	8,123	6,134
May 2009	9,298	6,129
Jun 2009	11,372	7,145
Jul 2009	12,335	7,616
Aug 2009	11,550	7,303
Sep 2009	10,277	6,645
Oct 2009	8,251	5,911
Nov 2009	8,547	6,402
Dec 2009	9,518	7,261
	<b>FE/GPU</b>	<b>PLGRP</b>
Jan 2010	9,587	7,574
Feb 2010	9,291	7,344
Mar 2010	8,839	6,754
Apr 2010	8,261	6,223
May 2010	9,487	6,238
Jun 2010	11,692	7,278
Jul 2010	12,599	7,735
Aug 2010	11,809	7,414
Sep 2010	10,457	6,729
Oct 2010	8,353	5,966
Nov 2010	8,684	6,476
Dec 2010	9,684	7,339

TABLE B-7

TREATMENT OF PJM MID-ATLANTIC LOAD MANAGEMENT IN PLANNING (MW)  
PLACED UNDER PJM COORDINATION - SUMMER

	2008	2009	2010	2011	2012	2013	2014	2015	2016	2017	2018	2019	2020	2021	2022	2023
AE																
a) CONTRACTUALLY INTERRUPTIBLE	7	7	7	7	7	7	7	7	7	7	7	7	7	7	7	7
b) DIRECT CONTROL	0	0	0	0	0	0	0	0	0	0	0	0	0	0	0	0
TOTAL	7	7	7	7	7	7	7	7	7	7	7	7	7	7	7	7
BGE																
a) CONTRACTUALLY INTERRUPTIBLE	50	50	50	50	50	50	50	50	50	50	50	50	50	50	50	50
b) DIRECT CONTROL	210	210	210	210	210	210	210	210	210	210	210	210	210	210	210	210
TOTAL	260	260	260	260	260	260	260	260	260	260	260	260	260	260	260	260
DPL																
a) CONTRACTUALLY INTERRUPTIBLE	25	25	25	25	25	25	25	25	25	25	25	25	25	25	25	25
b) DIRECT CONTROL	35	35	35	35	35	35	35	35	35	35	35	35	35	35	35	35
TOTAL	60	60	60	60	60	60	60	60	60	60	60	60	60	60	60	60
ICPL																
a) CONTRACTUALLY INTERRUPTIBLE	10	10	10	10	10	10	10	10	10	10	10	10	10	10	10	10
b) DIRECT CONTROL	47	47	47	47	47	47	47	47	47	47	47	47	47	47	47	47
TOTAL	57	57	57	57	57	57	57	57	57	57	57	57	57	57	57	57
METED																
a) CONTRACTUALLY INTERRUPTIBLE	45	45	45	45	45	45	45	45	45	45	45	45	45	45	45	45
b) DIRECT CONTROL	2	2	2	2	2	2	2	2	2	2	2	2	2	2	2	2
TOTAL	47	47	47	47	47	47	47	47	47	47	47	47	47	47	47	47
PECO																
a) CONTRACTUALLY INTERRUPTIBLE	190	190	190	190	190	190	190	190	190	190	190	190	190	190	190	190
b) DIRECT CONTROL	0	0	0	0	0	0	0	0	0	0	0	0	0	0	0	0
TOTAL	190	190	190	190	190	190	190	190	190	190	190	190	190	190	190	190
PENLC																
a) CONTRACTUALLY INTERRUPTIBLE	2	2	2	2	2	2	2	2	2	2	2	2	2	2	2	2
b) DIRECT CONTROL	5	5	5	5	5	5	5	5	5	5	5	5	5	5	5	5
TOTAL	7	7	7	7	7	7	7	7	7	7	7	7	7	7	7	7
PEPCO																
a) CONTRACTUALLY INTERRUPTIBLE	17	17	17	17	17	17	17	17	17	17	17	17	17	17	17	17
b) DIRECT CONTROL	11	11	11	11	11	11	11	11	11	11	11	11	11	11	11	11
TOTAL	28	28	28	28	28	28	28	28	28	28	28	28	28	28	28	28
PL																
a) CONTRACTUALLY INTERRUPTIBLE	250	250	250	250	250	250	250	250	250	250	250	250	250	250	250	250
b) DIRECT CONTROL	0	0	0	0	0	0	0	0	0	0	0	0	0	0	0	0
TOTAL	250	250	250	250	250	250	250	250	250	250	250	250	250	250	250	250
PS																
a) CONTRACTUALLY INTERRUPTIBLE	50	50	50	50	50	50	50	50	50	50	50	50	50	50	50	50
b) DIRECT CONTROL	62	62	62	62	62	62	62	62	62	62	62	62	62	62	62	62
TOTAL	112	112	112	112	112	112	112	112	112	112	112	112	112	112	112	112
RECO																
a) CONTRACTUALLY INTERRUPTIBLE	0	0	0	0	0	0	0	0	0	0	0	0	0	0	0	0
b) DIRECT CONTROL	0	0	0	0	0	0	0	0	0	0	0	0	0	0	0	0
TOTAL	0	0	0	0	0	0	0	0	0	0	0	0	0	0	0	0
UGI																
a) CONTRACTUALLY INTERRUPTIBLE	0	0	0	0	0	0	0	0	0	0	0	0	0	0	0	0
b) DIRECT CONTROL	0	0	0	0	0	0	0	0	0	0	0	0	0	0	0	0
TOTAL	0	0	0	0	0	0	0	0	0	0	0	0	0	0	0	0
PJM MID-ATLANTIC																
a) CONTRACTUALLY INTERRUPTIBLE	646	646	646	646	646	646	646	646	646	646	646	646	646	646	646	646
b) DIRECT CONTROL	372	372	372	372	372	372	372	372	372	372	372	372	372	372	372	372
TOTAL	1,018	1,018	1,018	1,018	1,018	1,018	1,018	1,018	1,018	1,018	1,018	1,018	1,018	1,018	1,018	1,018

Note: Forecast represents Load Management credits from summer 2007, and are held constant for the forecast period

**TABLE B-7**

**TREATMENT OF PJM WESTERN AND PJM SOUTHERN LOAD MANAGEMENT IN PLANNING (MW)  
PLACED UNDER PJM COORDINATION - SUMMER**

	2008	2009	2010	2011	2012	2013	2014	2015	2016	2017	2018	2019	2020	2021	2022	2023
<b>AEP</b>																
a) CONTRACTUALLY INTERRUPTIBLE	550	550	550	550	550	550	550	550	550	550	550	550	550	550	550	550
b) DIRECT CONTROL	0	0	0	0	0	0	0	0	0	0	0	0	0	0	0	0
<b>TOTAL</b>	<b>550</b>	<b>550</b>	<b>550</b>	<b>550</b>	<b>550</b>	<b>550</b>	<b>550</b>	<b>550</b>	<b>550</b>	<b>550</b>	<b>550</b>	<b>550</b>	<b>550</b>	<b>550</b>	<b>550</b>	<b>550</b>
<b>APS</b>																
a) CONTRACTUALLY INTERRUPTIBLE	110	110	110	110	110	110	110	110	110	110	110	110	110	110	110	110
b) DIRECT CONTROL	0	0	0	0	0	0	0	0	0	0	0	0	0	0	0	0
<b>TOTAL</b>	<b>110</b>	<b>110</b>	<b>110</b>	<b>110</b>	<b>110</b>	<b>110</b>	<b>110</b>	<b>110</b>	<b>110</b>	<b>110</b>	<b>110</b>	<b>110</b>	<b>110</b>	<b>110</b>	<b>110</b>	<b>110</b>
<b>COMED</b>																
a) CONTRACTUALLY INTERRUPTIBLE	420	420	420	420	420	420	420	420	420	420	420	420	420	420	420	420
b) DIRECT CONTROL	55	55	55	55	55	55	55	55	55	55	55	55	55	55	55	55
<b>TOTAL</b>	<b>475</b>	<b>475</b>	<b>475</b>	<b>475</b>	<b>475</b>	<b>475</b>	<b>475</b>	<b>475</b>	<b>475</b>	<b>475</b>	<b>475</b>	<b>475</b>	<b>475</b>	<b>475</b>	<b>475</b>	<b>475</b>
<b>DAY</b>																
a) CONTRACTUALLY INTERRUPTIBLE	2	2	2	2	2	2	2	2	2	2	2	2	2	2	2	2
b) DIRECT CONTROL	0	0	0	0	0	0	0	0	0	0	0	0	0	0	0	0
<b>TOTAL</b>	<b>2</b>	<b>2</b>	<b>2</b>	<b>2</b>	<b>2</b>	<b>2</b>	<b>2</b>	<b>2</b>	<b>2</b>	<b>2</b>	<b>2</b>	<b>2</b>	<b>2</b>	<b>2</b>	<b>2</b>	<b>2</b>
<b>DLCO</b>																
a) CONTRACTUALLY INTERRUPTIBLE	2	2	2	2	2	2	2	2	2	2	2	2	2	2	2	2
b) DIRECT CONTROL	0	0	0	0	0	0	0	0	0	0	0	0	0	0	0	0
<b>TOTAL</b>	<b>2</b>	<b>2</b>	<b>2</b>	<b>2</b>	<b>2</b>	<b>2</b>	<b>2</b>	<b>2</b>	<b>2</b>	<b>2</b>	<b>2</b>	<b>2</b>	<b>2</b>	<b>2</b>	<b>2</b>	<b>2</b>
<b>PJM WESTERN</b>																
a) CONTRACTUALLY INTERRUPTIBLE	1,084	1,084	1,084	1,084	1,084	1,084	1,084	1,084	1,084	1,084	1,084	1,084	1,084	1,084	1,084	1,084
b) DIRECT CONTROL	55	55	55	55	55	55	55	55	55	55	55	55	55	55	55	55
<b>TOTAL</b>	<b>1,139</b>	<b>1,139</b>	<b>1,139</b>	<b>1,139</b>	<b>1,139</b>	<b>1,139</b>	<b>1,139</b>	<b>1,139</b>	<b>1,139</b>	<b>1,139</b>	<b>1,139</b>	<b>1,139</b>	<b>1,139</b>	<b>1,139</b>	<b>1,139</b>	<b>1,139</b>
<b>DOM</b>																
a) CONTRACTUALLY INTERRUPTIBLE	11	11	11	11	11	11	11	11	11	11	11	11	11	11	11	11
b) DIRECT CONTROL	0	0	0	0	0	0	0	0	0	0	0	0	0	0	0	0
<b>TOTAL</b>	<b>11</b>	<b>11</b>	<b>11</b>	<b>11</b>	<b>11</b>	<b>11</b>	<b>11</b>	<b>11</b>	<b>11</b>	<b>11</b>	<b>11</b>	<b>11</b>	<b>11</b>	<b>11</b>	<b>11</b>	<b>11</b>
<b>PJM RTO</b>																
a) CONTRACTUALLY INTERRUPTIBLE	1,741	1,741	1,741	1,741	1,741	1,741	1,741	1,741	1,741	1,741	1,741	1,741	1,741	1,741	1,741	1,741
b) DIRECT CONTROL	427	427	427	427	427	427	427	427	427	427	427	427	427	427	427	427
<b>TOTAL</b>	<b>2,168</b>	<b>2,168</b>	<b>2,168</b>	<b>2,168</b>	<b>2,168</b>	<b>2,168</b>	<b>2,168</b>	<b>2,168</b>	<b>2,168</b>	<b>2,168</b>	<b>2,168</b>	<b>2,168</b>	<b>2,168</b>	<b>2,168</b>	<b>2,168</b>	<b>2,168</b>

Note: Forecast represents Load Management credits from summer 2007, and are held constant for the forecast period.

**Table B-8**

**SUMMER COINCIDENT PEAK LOAD (MW) FOR  
EACH PJM GEOGRAPHIC ZONE,  
LOAD DELIVERABILITY AREA AND RTO  
2008-2023**

	2008	2009	2010	2011	2012	2013	2014	2015	2016	2017	2018	2019	2020	2021	2022	2023
AE	2,730	2,797	2,875	3,059	3,124	3,259	3,340	3,401	3,474	3,525	3,579	3,633	3,689	3,748	3,824	3,873
BGE	7,065	7,171	7,271	7,347	7,415	7,492	7,570	7,644	7,695	7,773	7,832	7,914	7,989	8,053	8,121	8,199
DPL	4,039	4,122	4,204	4,284	4,369	4,453	4,534	4,617	4,708	4,808	4,882	4,980	5,067	5,166	5,268	5,374
JCPL	6,231	6,381	6,536	6,671	6,792	6,929	7,064	7,202	7,346	7,486	7,610	7,736	7,869	8,013	8,160	8,307
METED	2,814	2,865	2,925	2,974	3,017	3,065	3,112	3,162	3,216	3,266	3,308	3,363	3,419	3,474	3,533	3,586
PECO	8,429	8,575	8,723	8,850	8,980	9,100	9,224	9,356	9,483	9,613	9,734	9,852	9,972	10,094	10,233	10,364
PENLC	2,719	2,758	2,800	2,830	2,860	2,890	2,919	2,949	2,977	3,006	3,028	3,053	3,079	3,104	3,130	3,157
PEPCO	6,800	6,898	6,996	7,076	7,171	7,273	7,375	7,481	7,570	7,671	7,771	7,876	7,980	8,076	8,180	8,282
PL	7,011	7,126	7,253	7,356	7,452	7,558	7,658	7,766	7,876	7,986	8,089	8,203	8,317	8,429	8,548	8,667
PS	10,581	10,758	10,943	11,108	11,251	11,426	11,585	11,747	11,908	12,066	12,209	12,370	12,532	12,694	12,869	13,049
RECO	417	424	430	435	440	445	451	456	462	467	470	477	482	488	493	498
UGI	189	191	194	196	198	200	202	205	207	210	212	214	217	219	222	224
AEP	22,943	23,281	23,620	23,879	24,144	24,392	24,632	24,919	25,170	25,377	25,586	25,778	25,994	26,194	26,401	26,571
APS	8,356	8,445	8,538	8,615	8,705	8,785	8,862	8,939	9,001	9,080	9,144	9,211	9,282	9,346	9,405	9,485
COMED	22,731	23,288	23,722	24,140	24,572	25,082	25,573	26,085	26,532	26,995	27,442	27,888	28,376	28,812	29,247	29,719
DAY	3,426	3,469	3,515	3,545	3,584	3,623	3,657	3,691	3,721	3,752	3,777	3,810	3,838	3,862	3,886	3,912
DLCO	2,817	2,850	2,885	2,913	2,942	2,975	3,003	3,033	3,060	3,089	3,115	3,141	3,171	3,197	3,222	3,251
DOM	18,650	19,008	19,454	19,783	20,167	20,548	20,914	21,280	21,624	22,006	22,319	22,633	22,936	23,210	23,516	23,849
PJM RTO	137,948	140,407	142,884	145,061	147,183	149,495	151,675	153,933	156,030	158,176	160,107	162,132	164,209	166,179	168,258	170,367
Eastern MAAC	32,427	33,057	33,711	34,407	34,956	35,612	36,198	36,779	37,381	37,965	38,484	39,048	39,611	40,203	40,847	41,465
Southwest MAAC	13,865	14,069	14,267	14,423	14,586	14,765	14,945	15,125	15,265	15,444	15,603	15,790	15,969	16,129	16,301	16,481
MAAC and APS	67,381	68,511	69,688	70,801	71,774	72,875	73,896	74,925	75,923	76,957	77,868	78,882	79,894	80,904	81,986	83,065

Notes: Load values presented here are coincident with the PJM RTO peak.  
This table will be used for the Reliability Pricing Model.

**TABLE C-1**

**PJM LOAD DELIVERABILITY AREAS  
CENTRAL MID-ATLANTIC: BGE, METED, PEPCO, PL AND UGI  
50/50 SEASONAL PEAKS - MW**

<b>YEAR</b>	<b>SPRING (WK 14-19)</b>	<b>SUMMER (WK 20-39)</b>	<b>FALL (WK 40-45)</b>	<b>WINTER (WK 46-13)</b>
2008	17,372	24,611	16,893	21,245
2009	17,570	25,003	17,150	21,404
2010	17,838	25,374	17,282	21,662
2011	17,909	25,685	17,482	21,900
2012	18,110	25,965	17,886	22,099
2013	18,344	26,348	18,103	22,271
2014	18,613	26,672	18,252	22,452
2015	18,816	27,003	18,391	22,646
2016	18,922	27,314	18,497	22,871
2017	19,113	27,638	18,861	23,116
2018	19,352	27,957	19,203	23,313
2019	19,603	28,338	19,394	23,514
2020	19,830	28,688	19,515	23,672
2021	20,034	29,003	19,637	23,907
2022	20,208	29,365	19,813	24,167
2023	20,381	29,716	20,188	24,393

**TABLE C-2**

**PJM LOAD DELIVERABILITY AREAS  
WESTERN MID-ATLANTIC: METED, PENLC, PL AND UGI  
50/50 SEASONAL PEAKS - MW**

<b>YEAR</b>	<b>SPRING (WK 14-19)</b>	<b>SUMMER (WK 20-39)</b>	<b>FALL (WK 40-45)</b>	<b>WINTER (WK 46-13)</b>
2008	10,696	13,186	10,347	12,782
2009	10,801	13,410	10,516	12,868
2010	10,948	13,628	10,619	13,039
2011	11,069	13,818	10,788	13,201
2012	11,236	13,966	10,983	13,335
2013	11,374	14,182	11,107	13,452
2014	11,510	14,360	11,214	13,548
2015	11,608	14,550	11,306	13,680
2016	11,745	14,746	11,436	13,818
2017	11,905	14,923	11,619	13,990
2018	12,040	15,094	11,821	14,111
2019	12,180	15,308	11,919	14,244
2020	12,273	15,512	12,004	14,329
2021	12,389	15,702	12,101	14,486
2022	12,554	15,913	12,249	14,656
2023	12,744	16,109	12,440	14,803

**TABLE C-3**

**PJM LOAD DELIVERABILITY AREAS  
EASTERN MID-ATLANTIC: AE, DPL, JCPL, PECO, PS AND RECO  
50/50 SEASONAL PEAKS - MW**

<b>YEAR</b>	<b>SPRING (WK 14-19)</b>	<b>SUMMER (WK 20-39)</b>	<b>FALL (WK 40-45)</b>	<b>WINTER (WK 46-13)</b>
2008	19,701	33,510	20,550	22,920
2009	20,146	34,166	20,989	23,200
2010	20,520	34,825	21,258	23,585
2011	20,702	35,521	21,632	23,945
2012	21,085	36,049	22,444	24,303
2013	21,450	36,735	22,924	24,641
2014	21,928	37,351	23,199	24,941
2015	22,361	37,919	23,516	25,283
2016	22,503	38,521	23,652	25,607
2017	22,816	39,096	24,302	25,950
2018	23,190	39,632	24,853	26,269
2019	23,511	40,233	25,231	26,572
2020	24,069	40,807	25,512	26,829
2021	24,350	41,403	25,789	27,200
2022	24,557	42,035	26,037	27,563
2023	24,908	42,657	26,681	27,893

**TABLE C-4**

**PJM LOAD DELIVERABILITY AREAS  
SOUTHERN MID-ATLANTIC: BGE AND PEPCO  
50/50 SEASONAL PEAKS - MW**

<b>YEAR</b>	<b>SPRING (WK 14-19)</b>	<b>SUMMER (WK 20-39)</b>	<b>FALL (WK 40-45)</b>	<b>WINTER (WK 46-13)</b>
2008	9,371	14,347	9,265	11,355
2009	9,492	14,559	9,391	11,444
2010	9,646	14,752	9,445	11,570
2011	9,625	14,905	9,522	11,688
2012	9,691	15,061	9,785	11,784
2013	9,814	15,267	9,886	11,867
2014	9,979	15,445	9,957	11,967
2015	10,107	15,615	10,021	12,057
2016	10,098	15,760	10,026	12,173
2017	10,161	15,933	10,240	12,284
2018	10,282	16,104	10,439	12,381
2019	10,415	16,299	10,526	12,476
2020	10,573	16,473	10,582	12,557
2021	10,681	16,625	10,623	12,663
2022	10,717	16,802	10,683	12,787
2023	10,727	16,983	10,894	12,893



**TABLE C-5**

**PJM LOAD DELIVERABILITY AREAS  
MID-ATLANTIC and APS: AE, APS, BGE, DPL, JCPL, METED, PECO, PENLC, PEPSCO, PL, PS, RECO, and UGI  
50/50 SEASONAL PEAKS - MW**

<b>YEAR</b>	<b>SPRING (WK 14-19)</b>	<b>SUMMER (WK 20-39)</b>	<b>FALL (WK 40-45)</b>	<b>WINTER (WK 46-13)</b>
2008	46,108	69,212	46,202	55,026
2009	46,809	70,391	46,991	55,510
2010	47,533	71,540	47,461	56,279
2011	47,863	72,651	48,122	57,005
2012	48,539	73,556	49,455	57,654
2013	49,192	74,749	50,208	58,217
2014	50,012	75,793	50,683	58,758
2015	50,695	76,786	51,175	59,376
2016	51,010	77,784	51,472	60,025
2017	51,599	78,773	52,570	60,731
2018	52,260	79,709	53,577	61,306
2019	52,877	80,786	54,171	61,856
2020	53,702	81,804	54,604	62,315
2021	54,232	82,795	55,041	63,023
2022	54,690	83,873	55,526	63,749
2023	55,299	84,939	56,610	64,383

**Table D-1**  
**SUMMER 90/10 PEAK LOAD (MW) FOR**  
**EACH PJM MID-ATLANTIC GEOGRAPHIC ZONE AND SUM OF GEOGRAPHIC ZONES**  
**2008-2023**

	<b>2008</b>	<b>2009</b>	<b>2010</b>	<b>2011</b>	<b>2012</b>	<b>2013</b>	<b>2014</b>	<b>2015</b>	<b>2016</b>	<b>2017</b>	<b>2018</b>	<b>2019</b>	<b>2020</b>	<b>2021</b>	<b>2022</b>	<b>2023</b>
AE	2,992	3,065	3,138	3,319	3,398	3,535	3,630	3,690	3,746	3,810	3,876	3,930	3,992	4,050	4,108	4,170
BGE	7,585	7,702	7,812	7,893	7,974	8,044	8,122	8,202	8,268	8,341	8,424	8,491	8,569	8,642	8,710	8,783
DPL	4,407	4,503	4,583	4,668	4,755	4,849	4,951	5,049	5,137	5,233	5,315	5,432	5,556	5,660	5,760	5,865
JCPL	6,884	7,056	7,208	7,353	7,429	7,594	7,803	7,958	8,087	8,239	8,306	8,478	8,687	8,824	8,971	9,132
METED	3,040	3,095	3,156	3,203	3,251	3,302	3,356	3,409	3,459	3,512	3,565	3,622	3,682	3,738	3,792	3,849
PECO	9,211	9,373	9,524	9,642	9,759	9,911	10,054	10,196	10,317	10,453	10,560	10,718	10,853	10,987	11,114	11,253
PENLC	2,951	2,995	3,031	3,059	3,090	3,107	3,146	3,184	3,206	3,226	3,263	3,274	3,315	3,342	3,354	3,371
PEPCO	7,383	7,499	7,604	7,693	7,799	7,900	8,013	8,130	8,234	8,347	8,463	8,570	8,683	8,793	8,895	9,013
PL	7,568	7,694	7,823	7,916	7,996	8,131	8,252	8,370	8,467	8,554	8,669	8,815	8,950	9,066	9,174	9,280
PS	11,496	11,710	11,901	12,053	12,148	12,332	12,608	12,796	12,932	13,110	13,196	13,371	13,663	13,832	13,997	14,189
RECO	462	469	475	480	485	490	497	503	507	513	518	523	530	534	539	545
UGI	205	208	210	212	214	217	219	222	223	226	228	231	234	236	238	240
DIVERSITY (-)	630	645	654	665	681	672	685	699	712	719	737	730	745	758	765	771
PJM MID-ATLANTIC	63,554	64,724	65,811	66,826	67,617	68,740	69,966	71,010	71,871	72,845	73,646	74,725	75,969	76,946	77,887	78,919
FE/GPU	12,686	12,950	13,197	13,413	13,558	13,807	14,104	14,342	14,537	14,761	14,905	15,159	15,463	15,676	15,888	16,123
PLGRP	7,770	7,898	8,029	8,124	8,206	8,344	8,467	8,588	8,686	8,776	8,893	9,042	9,180	9,298	9,408	9,516

**Table D-1**

**SUMMER 90/10 PEAK LOAD (MW) FOR  
EACH PJM WESTERN AND PJM SOUTHERN GEOGRAPHIC ZONE AND SUM OF GEOGRAPHIC ZONES  
2008-2023**

	2008	2009	2010	2011	2012	2013	2014	2015	2016	2017	2018	2019	2020	2021	2022	2023
AEP	24,623	25,033	25,451	25,681	25,984	26,276	26,531	26,832	27,119	27,407	27,648	27,871	28,090	28,310	28,500	28,747
APS	8,936	9,040	9,132	9,210	9,314	9,374	9,453	9,536	9,606	9,681	9,773	9,818	9,889	9,954	10,023	10,093
COMED	25,024	25,604	26,138	26,604	27,107	27,558	28,048	28,598	29,104	29,605	30,113	30,522	30,998	31,487	32,017	32,541
DAY	3,720	3,769	3,815	3,851	3,897	3,928	3,965	4,004	4,036	4,070	4,105	4,130	4,159	4,186	4,210	4,238
DLCO	3,100	3,137	3,174	3,205	3,241	3,269	3,300	3,333	3,363	3,394	3,428	3,451	3,481	3,510	3,538	3,568
DIVERSITY (-)	1,259	1,277	1,224	1,009	1,388	1,580	1,525	1,501	1,080	1,317	1,548	1,661	1,611	1,405	1,124	1,581
PJM WESTERN	64,144	65,306	66,486	67,542	68,155	68,825	69,772	70,802	72,148	72,840	73,519	74,131	75,006	76,042	77,164	77,606
DOM	19,730	20,150	20,618	20,969	21,385	21,759	22,150	22,558	22,938	23,322	23,692	24,000	24,313	24,620	24,922	25,250
DIVERSITY (-)	963	1,066	1,163	1,248	867	522	731	887	1,249	1,024	830	623	857	1,086	1,228	795
PJM RTO	146,465	149,114	151,752	154,089	156,290	158,802	161,157	163,483	165,708	167,983	170,027	172,233	174,431	176,522	178,745	180,980

**Table D-2**

**WINTER 90/10 PEAK LOAD (MW) FOR  
EACH PJM MID-ATLANTIC GEOGRAPHIC ZONE AND SUM OF GEOGRAPHIC ZONES  
2007/08- 2022/23**

	<b>07/08</b>	<b>08/09</b>	<b>09/10</b>	<b>010/11</b>	<b>11/12</b>	<b>12/13</b>	<b>13/14</b>	<b>14/15</b>	<b>15/16</b>	<b>16/17</b>	<b>17/18</b>	<b>18/19</b>	<b>19/20</b>	<b>20/21</b>	<b>21/22</b>	<b>22/23</b>
AE	1,938	1,959	1,996	2,037	2,133	2,173	2,228	2,273	2,303	2,344	2,371	2,412	2,425	2,456	2,494	2,526
BGE	6,334	6,349	6,403	6,463	6,496	6,542	6,566	6,591	6,622	6,667	6,706	6,744	6,768	6,809	6,850	6,891
DPL	3,627	3,670	3,717	3,777	3,825	3,878	3,929	3,980	4,027	4,090	4,142	4,197	4,249	4,308	4,378	4,447
JCPL	4,161	4,201	4,277	4,360	4,425	4,499	4,555	4,611	4,668	4,755	4,812	4,889	4,927	5,006	5,086	5,167
METED	2,679	2,703	2,725	2,782	2,815	2,846	2,875	2,904	2,920	2,976	3,010	3,043	3,077	3,114	3,151	3,189
PECO	6,872	6,908	7,028	7,135	7,223	7,300	7,358	7,415	7,510	7,623	7,699	7,771	7,810	7,903	7,998	8,094
PENLC	2,915	2,929	2,959	3,005	3,039	3,068	3,088	3,108	3,131	3,172	3,183	3,220	3,234	3,266	3,299	3,332
PEPCO	5,696	5,730	5,795	5,881	5,943	6,010	6,065	6,121	6,182	6,276	6,337	6,416	6,467	6,538	6,610	6,683
PL	7,611	7,652	7,726	7,837	7,898	7,959	8,015	8,070	8,130	8,236	8,300	8,371	8,422	8,484	8,593	8,666
PS	7,279	7,321	7,423	7,541	7,630	7,746	7,816	7,886	7,962	8,073	8,162	8,275	8,322	8,422	8,523	8,625
RECO	246	247	247	248	249	250	251	252	253	254	254	255	256	257	258	259
UGI	210	211	213	215	217	218	220	221	222	225	227	228	229	231	233	235
DIVERSITY (-)	798	772	782	835	863	882	835	854	877	946	934	997	902	955	987	1,014
PJM MID-ATLANTIC	48,770	49,108	49,727	50,446	51,030	51,607	52,131	52,578	53,053	53,745	54,269	54,824	55,284	55,839	56,486	57,100
FE/GPU	9,676	9,760	9,887	10,060	10,193	10,314	10,440	10,544	10,630	10,798	10,896	11,040	11,153	11,264	11,398	11,538
PLGRP	7,817	7,859	7,935	8,048	8,111	8,173	8,231	8,287	8,348	8,457	8,523	8,595	8,647	8,711	8,822	8,897

**Table D-2**

**WINTER 90/10 PEAK LOAD (MW) FOR  
EACH PJM WESTERN AND PJM SOUTHERN GEOGRAPHIC ZONE AND SUM OF GEOGRAPHIC ZONES  
2007/08- 2022/23**

	<b>07/08</b>	<b>08/09</b>	<b>09/010</b>	<b>010/11</b>	<b>11/12</b>	<b>12/13</b>	<b>13/14</b>	<b>14/15</b>	<b>15/16</b>	<b>16/17</b>	<b>17/18</b>	<b>18/19</b>	<b>19/20</b>	<b>20/21</b>	<b>21/22</b>	<b>22/23</b>
AEP	24,218	24,422	24,543	24,749	24,933	25,165	25,347	25,528	25,662	25,796	25,944	26,128	26,256	26,466	26,678	26,892
APS	9,139	9,182	9,249	9,345	9,409	9,493	9,555	9,618	9,663	9,737	9,800	9,864	9,895	9,964	10,034	10,104
COMED	16,736	16,839	17,113	17,451	17,728	18,040	18,232	18,425	18,670	19,059	19,307	19,667	19,748	20,064	20,385	20,712
DAY	3,207	3,239	3,265	3,276	3,302	3,324	3,350	3,376	3,391	3,401	3,417	3,439	3,448	3,472	3,497	3,521
DLCO	2,238	2,242	2,251	2,265	2,269	2,279	2,288	2,303	2,307	2,316	2,326	2,335	2,345	2,354	2,363	2,373
DIVERSITY (-)	1,243	1,087	1,109	1,248	1,309	1,383	1,415	1,278	1,307	1,456	1,479	1,578	1,454	1,580	1,613	1,703
PJM WESTERN	54,295	54,837	55,312	55,838	56,332	56,918	57,357	57,972	58,386	58,853	59,315	59,855	60,238	60,740	61,344	61,899
DOM	18,103	18,249	18,566	18,873	19,137	19,430	19,554	19,898	20,144	20,454	20,674	20,946	21,134	21,287	21,533	21,771
DIVERSITY (-)	575	326	243	250	369	524	504	187	102	265	228	349	458	145	269	537
PJM RTO	120,593	121,868	123,362	124,907	126,130	127,431	128,538	130,261	131,481	132,787	134,030	135,276	136,198	137,721	139,094	140,233

Table E-1

**ANNUAL NET ENERGY (GWh) AND GROWTH RATES FOR  
EACH PJM MID-ATLANTIC GEOGRAPHIC ZONE AND SUM OF GEOGRAPHIC ZONES  
2008-2018**

	ESTIMATED												Annual Growth Rate (10 yr)
	2007	2008	2009	2010	2011	2012	2013	2014	2015	2016	2017	2018	
AE	11,757	12,079	12,342	12,682	13,296	13,802	14,294	14,710	14,968	15,269	15,492	15,743	2.7%
	%	2.7%	2.2%	2.8%	4.8%	3.8%	3.6%	2.9%	1.8%	2.0%	1.5%	1.6%	
BGE	34,967	35,351	35,670	36,140	36,511	36,929	37,123	37,450	37,738	38,140	38,345	38,650	0.9%
	%	1.1%	0.9%	1.3%	1.0%	1.1%	0.5%	0.9%	0.8%	1.1%	0.5%	0.8%	
DPL	19,730	20,046	20,310	20,633	20,958	21,348	21,621	21,967	22,289	22,685	22,979	23,329	1.5%
	%	1.6%	1.3%	1.6%	1.6%	1.9%	1.3%	1.6%	1.5%	1.8%	1.3%	1.5%	
JCPL	24,935	25,418	25,954	26,611	27,183	27,792	28,246	28,828	29,387	30,041	30,526	31,067	2.0%
	%	1.9%	2.1%	2.5%	2.1%	2.2%	1.6%	2.1%	1.9%	2.2%	1.6%	1.8%	
METED	16,041	16,308	16,551	16,882	17,155	17,445	17,638	17,916	18,186	18,511	18,733	19,015	1.5%
	%	1.7%	1.5%	2.0%	1.6%	1.7%	1.1%	1.6%	1.5%	1.8%	1.2%	1.5%	
PECO	41,768	42,514	43,179	43,972	44,670	45,446	45,973	46,677	47,353	48,162	48,702	49,353	1.5%
	%	1.8%	1.6%	1.8%	1.6%	1.7%	1.2%	1.5%	1.4%	1.7%	1.1%	1.3%	
PENLC	18,400	18,667	18,908	19,224	19,477	19,757	19,926	20,182	20,413	20,696	20,836	21,034	1.2%
	%	1.5%	1.3%	1.7%	1.3%	1.4%	0.9%	1.3%	1.1%	1.4%	0.7%	1.0%	
PEPCO	32,883	33,399	33,754	34,216	34,633	35,151	35,499	35,984	36,436	37,004	37,385	37,873	1.3%
	%	1.6%	1.1%	1.4%	1.2%	1.5%	1.0%	1.4%	1.3%	1.6%	1.0%	1.3%	
PL	42,027	42,692	43,241	43,995	44,629	45,330	45,780	46,430	47,054	47,837	48,340	48,992	1.4%
	%	1.6%	1.3%	1.7%	1.4%	1.6%	1.0%	1.4%	1.3%	1.7%	1.1%	1.3%	
PS	48,368	49,120	49,876	50,817	51,669	52,523	53,104	53,961	54,757	55,726	56,366	57,103	1.5%
	%	1.6%	1.5%	1.9%	1.7%	1.7%	1.1%	1.6%	1.5%	1.8%	1.1%	1.3%	
RECO	1,556	1,570	1,584	1,600	1,615	1,630	1,638	1,654	1,669	1,688	1,695	1,706	0.8%
	%	0.9%	0.9%	1.0%	0.9%	0.9%	0.5%	1.0%	0.9%	1.1%	0.4%	0.6%	
UGI	1,082	1,097	1,107	1,121	1,134	1,149	1,161	1,174	1,187	1,205	1,215	1,228	1.1%
	%	1.4%	0.9%	1.3%	1.2%	1.3%	1.0%	1.1%	1.1%	1.5%	0.8%	1.1%	
PJM MID-ATLANTIC	293,514	298,261	302,476	307,893	312,930	318,302	322,003	326,933	331,437	336,964	340,614	345,093	1.5%
	%	1.6%	1.4%	1.8%	1.6%	1.7%	1.2%	1.5%	1.4%	1.7%	1.1%	1.3%	
FE/GPU	59,376	60,393	61,413	62,717	63,815	64,994	65,810	66,926	67,986	69,248	70,095	71,116	1.6%
	%	1.7%	1.7%	2.1%	1.8%	1.8%	1.3%	1.7%	1.6%	1.9%	1.2%	1.5%	
PLGRP	43,109	43,789	44,348	45,116	45,763	46,479	46,941	47,604	48,241	49,042	49,555	50,220	1.4%
	%	1.6%	1.3%	1.7%	1.4%	1.6%	1.0%	1.4%	1.3%	1.7%	1.0%	1.3%	

Note: Values presented are consistent with Net Energy for Load, and may not be consistent with utility sales.

Table E-1 (Continued)

ANNUAL NET ENERGY (GWh) AND GROWTH RATES FOR  
EACH PJM MID-ATLANTIC GEOGRAPHIC ZONE AND SUM OF GEOGRAPHIC ZONES  
2019-2023

		2019	2020	2021	2022	2023	Annual Growth Rate (15 yr)
AE		15,980	16,262	16,475	16,732	16,999	2.3%
	%	1.5%	1.8%	1.3%	1.6%	1.6%	
BGE		38,935	39,357	39,553	39,876	40,189	0.9%
	%	0.7%	1.1%	0.5%	0.8%	0.8%	
DPL		23,681	24,142	24,461	24,863	25,275	1.6%
	%	1.5%	1.9%	1.3%	1.6%	1.7%	
JCPL		31,588	32,244	32,741	33,340	33,934	1.9%
	%	1.7%	2.1%	1.5%	1.8%	1.8%	
METED		19,276	19,649	19,893	20,201	20,494	1.5%
	%	1.4%	1.9%	1.2%	1.5%	1.5%	
PECO		49,981	50,812	51,350	52,053	52,739	1.4%
	%	1.3%	1.7%	1.1%	1.4%	1.3%	
PENLC		21,215	21,503	21,644	21,851	22,034	1.1%
	%	0.9%	1.4%	0.7%	1.0%	0.8%	
PEPCO		38,321	38,901	39,263	39,772	40,268	1.3%
	%	1.2%	1.5%	0.9%	1.3%	1.2%	
PL		49,610	50,469	51,009	51,722	52,394	1.4%
	%	1.3%	1.7%	1.1%	1.4%	1.3%	
PS		57,804	58,808	59,456	60,315	61,123	1.5%
	%	1.2%	1.7%	1.1%	1.4%	1.3%	
RECO		1,718	1,737	1,750	1,763	1,773	0.8%
	%	0.7%	1.1%	0.7%	0.7%	0.6%	
UGI		1,242	1,260	1,269	1,286	1,299	1.1%
	%	1.1%	1.4%	0.7%	1.3%	1.0%	
PJM MID-ATLANTIC		349,351	355,144	358,864	363,774	368,521	1.4%
	%	1.2%	1.7%	1.0%	1.4%	1.3%	
FE/GPU		72,079	73,396	74,278	75,392	76,462	1.6%
	%	1.4%	1.8%	1.2%	1.5%	1.4%	
PLGRP		50,852	51,729	52,278	53,008	53,693	1.4%
	%	1.3%	1.7%	1.1%	1.4%	1.3%	

Note: Values presented are consistent with Net Energy for Load, and may not be consistent with utility sales.

**Table E-1**

**ANNUAL NET ENERGY (GWh) AND GROWTH RATES FOR  
EACH PJM WESTERN AND PJM SOUTHERN GEOGRAPHIC ZONE AND SUM OF GEOGRAPHIC ZONES  
2008-2018**

	<b>ESTIMATED</b>												<b>Annual Growth Rate (10 yr)</b>
	<b>2007</b>	<b>2008</b>	<b>2009</b>	<b>2010</b>	<b>2011</b>	<b>2012</b>	<b>2013</b>	<b>2014</b>	<b>2015</b>	<b>2016</b>	<b>2017</b>	<b>2018</b>	
AEP	139,765	141,365	142,780	144,726	146,324	148,241	149,128	150,780	152,253	154,164	155,098	156,355	1.0%
%		1.1%	1.0%	1.4%	1.1%	1.3%	0.6%	1.1%	1.0%	1.3%	0.6%	0.8%	
APS	51,040	51,432	51,651	52,070	52,438	52,924	53,083	53,474	53,791	54,251	54,403	54,706	0.6%
%		0.8%	0.4%	0.8%	0.7%	0.9%	0.3%	0.7%	0.6%	0.9%	0.3%	0.6%	
COMED	106,078	108,516	111,033	113,691	116,097	118,766	120,865	123,587	126,233	129,223	131,432	133,895	2.1%
%		2.3%	2.3%	2.4%	2.1%	2.3%	1.8%	2.3%	2.1%	2.4%	1.7%	1.9%	
DAY	18,933	19,117	19,319	19,594	19,802	20,052	20,170	20,402	20,604	20,858	20,977	21,126	1.0%
%		1.0%	1.1%	1.4%	1.1%	1.3%	0.6%	1.2%	1.0%	1.2%	0.6%	0.7%	
DLCO	14,877	15,003	15,124	15,304	15,461	15,648	15,741	15,903	16,047	16,239	16,337	16,477	0.9%
%		0.8%	0.8%	1.2%	1.0%	1.2%	0.6%	1.0%	0.9%	1.2%	0.6%	0.9%	
PJM WESTERN	330,693	335,433	339,907	345,385	350,122	355,631	358,987	364,146	368,928	374,735	378,247	382,559	1.3%
%		1.4%	1.3%	1.6%	1.4%	1.6%	0.9%	1.4%	1.3%	1.6%	0.9%	1.1%	
DOM	94,493	96,125	97,665	99,936	101,733	103,819	105,312	107,228	109,032	111,230	112,745	114,353	1.8%
%		1.7%	1.6%	2.3%	1.8%	2.1%	1.4%	1.8%	1.7%	2.0%	1.4%	1.4%	
PJM RTO	718,700	729,819	740,048	753,214	764,785	777,752	786,302	798,307	809,397	822,929	831,606	842,005	1.4%
%		1.5%	1.4%	1.8%	1.5%	1.7%	1.1%	1.5%	1.4%	1.7%	1.1%	1.3%	

Note: Values presented are consistent with Net Energy for Load, and may not be consistent with utility sales.



Table E-1 (Continued)

ANNUAL NET ENERGY (GWh) AND GROWTH RATES FOR  
EACH PJM WESTERN AND PJM SOUTHERN GEOGRAPHIC ZONE AND SUM OF GEOGRAPHIC ZONES  
2019-2023

		2019	2020	2021	2022	2023	Annual Growth Rate (15 yr)
AEP		157,324	159,130	159,844	161,063	162,132	0.9%
	%	0.6%	1.1%	0.4%	0.8%	0.7%	
APS		54,952	55,469	55,595	55,906	56,183	0.6%
	%	0.4%	0.9%	0.2%	0.6%	0.5%	
COMED		136,117	138,980	141,049	143,607	146,134	2.0%
	%	1.7%	2.1%	1.5%	1.8%	1.8%	
DAY		21,258	21,515	21,614	21,776	21,912	0.9%
	%	0.6%	1.2%	0.5%	0.7%	0.6%	
DLCO		16,593	16,789	16,887	17,035	17,172	0.9%
	%	0.7%	1.2%	0.6%	0.9%	0.8%	
PJM WESTERN		386,244	391,883	394,989	399,387	403,533	1.2%
	%	1.0%	1.5%	0.8%	1.1%	1.0%	
DOM		115,839	117,697	118,810	120,370	121,927	1.6%
	%	1.3%	1.6%	0.9%	1.3%	1.3%	
PJM RTO		851,434	864,724	872,663	883,531	893,981	1.4%
	%	1.1%	1.6%	0.9%	1.2%	1.2%	

Note: Values presented are consistent with Net Energy for Load, and may not be consistent with utility sales.

Table E-2

MONTHLY NET ENERGY FORECAST (GWh) FOR EACH  
PJM MID-ATLANTIC GEOGRAPHIC ZONE AND SUM OF GEOGRAPHIC ZONES

	<b>AE</b>	<b>BGE</b>	<b>DPL</b>	<b>JCPL</b>	<b>METED</b>	<b>PECO</b>	<b>PENLC</b>	<b>PEPCO</b>	<b>PL</b>	<b>PS</b>	<b>RECO</b>	<b>UGI</b>	<b>PJM MID-ATLANTIC</b>
Jan 2008	1,014	3,276	1,840	2,180	1,480	3,741	1,697	2,950	4,057	4,112	128	109	26,584
Feb 2008	928	2,954	1,685	1,982	1,357	3,414	1,567	2,680	3,694	3,778	116	98	24,253
Mar 2008	917	2,839	1,604	1,985	1,353	3,399	1,585	2,581	3,622	3,846	120	95	23,946
Apr 2008	856	2,515	1,426	1,832	1,239	3,138	1,459	2,366	3,239	3,631	114	82	21,897
May 2008	908	2,608	1,477	1,922	1,276	3,264	1,495	2,499	3,295	3,816	123	82	22,765
Jun 2008	1,050	3,050	1,697	2,231	1,341	3,635	1,481	3,027	3,379	4,344	144	83	25,462
Jul 2008	1,314	3,534	2,004	2,692	1,497	4,233	1,589	3,463	3,765	5,068	171	95	29,425
Aug 2008	1,288	3,445	1,966	2,581	1,475	4,109	1,592	3,345	3,702	4,902	162	92	28,659
Sep 2008	981	2,781	1,561	2,005	1,262	3,347	1,484	2,732	3,288	3,969	124	81	23,615
Oct 2008	918	2,606	1,496	1,947	1,305	3,322	1,548	2,476	3,366	3,861	122	85	23,052
Nov 2008	896	2,638	1,519	1,910	1,279	3,257	1,508	2,450	3,380	3,738	118	89	22,782
Dec 2008	1,009	3,105	1,771	2,151	1,444	3,655	1,662	2,830	3,905	4,055	128	106	25,821
	<b>AE</b>	<b>BGE</b>	<b>DPL</b>	<b>JCPL</b>	<b>METED</b>	<b>PECO</b>	<b>PENLC</b>	<b>PEPCO</b>	<b>PL</b>	<b>PS</b>	<b>RECO</b>	<b>UGI</b>	<b>MID-ATLANTIC</b>
Jan 2009	1,033	3,291	1,860	2,213	1,494	3,786	1,712	2,971	4,089	4,153	129	109	26,840
Feb 2009	914	2,879	1,652	1,948	1,329	3,350	1,533	2,621	3,612	3,699	113	96	23,746
Mar 2009	940	2,872	1,632	2,032	1,385	3,475	1,618	2,620	3,697	3,929	122	96	24,418
Apr 2009	879	2,545	1,448	1,875	1,256	3,194	1,477	2,397	3,280	3,694	115	83	22,243
May 2009	931	2,636	1,499	1,966	1,295	3,323	1,514	2,529	3,339	3,879	124	83	23,118
Jun 2009	1,076	3,093	1,726	2,286	1,368	3,712	1,505	3,072	3,444	4,429	146	85	25,942
Jul 2009	1,344	3,579	2,036	2,756	1,522	4,308	1,614	3,509	3,825	5,157	173	96	29,919
Aug 2009	1,317	3,490	1,998	2,645	1,501	4,186	1,616	3,391	3,763	4,991	164	93	29,155
Sep 2009	1,006	2,811	1,585	2,055	1,284	3,404	1,508	2,763	3,341	4,035	125	82	23,999
Oct 2009	945	2,642	1,520	2,000	1,328	3,383	1,571	2,511	3,418	3,936	123	86	23,463
Nov 2009	922	2,680	1,548	1,966	1,308	3,326	1,540	2,493	3,449	3,819	120	91	23,262
Dec 2009	1,035	3,152	1,806	2,212	1,481	3,732	1,700	2,877	3,984	4,155	130	107	26,371
	<b>AE</b>	<b>BGE</b>	<b>DPL</b>	<b>JCPL</b>	<b>METED</b>	<b>PECO</b>	<b>PENLC</b>	<b>PEPCO</b>	<b>PL</b>	<b>PS</b>	<b>RECO</b>	<b>UGI</b>	<b>MID-ATLANTIC</b>
Jan 2010	1,056	3,325	1,887	2,262	1,520	3,843	1,739	3,008	4,144	4,225	130	110	27,249
Feb 2010	937	2,916	1,679	1,995	1,355	3,409	1,559	2,660	3,670	3,770	114	97	24,161
Mar 2010	973	2,925	1,670	2,097	1,419	3,556	1,653	2,676	3,778	4,023	123	98	24,991
Apr 2010	906	2,581	1,472	1,927	1,280	3,256	1,500	2,432	3,337	3,766	116	84	22,657
May 2010	961	2,674	1,523	2,021	1,323	3,391	1,542	2,567	3,404	3,958	126	84	23,574
Jun 2010	1,107	3,138	1,754	2,348	1,397	3,785	1,532	3,114	3,513	4,517	148	86	26,439
Jul 2010	1,377	3,617	2,060	2,816	1,547	4,368	1,632	3,543	3,877	5,232	174	97	30,340
Aug 2010	1,352	3,544	2,032	2,716	1,539	4,274	1,652	3,443	3,847	5,097	167	95	29,758
Sep 2010	1,035	2,849	1,610	2,109	1,310	3,469	1,533	2,799	3,401	4,111	126	83	24,435
Oct 2010	972	2,670	1,541	2,046	1,349	3,439	1,591	2,538	3,465	4,000	124	87	23,822
Nov 2010	944	2,713	1,571	2,012	1,338	3,389	1,567	2,523	3,519	3,890	121	92	23,679
Dec 2010	1,062	3,188	1,834	2,262	1,505	3,793	1,724	2,913	4,040	4,228	131	108	26,788

Table E-2

MONTHLY NET ENERGY FORECAST (GWh) FOR EACH  
PJM WESTERN AND PJM SOUTHERN GEOGRAPHIC ZONE AND SUM OF GEOGRAPHIC ZONES

	AEP	APS	COMED	DAY	DLCO	PJM WESTERN	DOM	PJM RTO
Jan 2008	13,159	4,875	9,333	1,700	1,291	30,358	8,934	65,876
Feb 2008	11,975	4,453	8,586	1,549	1,187	27,750	8,039	60,042
Mar 2008	11,788	4,335	8,628	1,547	1,209	27,507	7,615	59,068
Apr 2008	10,741	3,900	8,147	1,446	1,135	25,369	6,791	54,057
May 2008	11,074	3,979	8,485	1,501	1,198	26,237	7,127	56,129
Jun 2008	11,499	4,093	9,113	1,612	1,280	27,597	8,406	61,465
Jul 2008	12,671	4,507	10,721	1,810	1,454	31,163	9,503	70,091
Aug 2008	12,536	4,468	10,329	1,778	1,415	30,526	9,241	68,426
Sep 2008	10,920	3,945	8,634	1,504	1,204	26,207	7,635	57,457
Oct 2008	11,204	4,049	8,675	1,523	1,199	26,650	7,109	56,811
Nov 2008	11,127	4,102	8,489	1,490	1,163	26,371	7,202	56,355
Dec 2008	12,671	4,726	9,376	1,657	1,268	29,698	8,523	64,042
	AEP	APS	COMED	DAY	DLCO	WESTERN	DOM	PJM RTO
Jan 2009	13,226	4,886	9,505	1,708	1,296	30,621	9,027	66,488
Feb 2009	11,678	4,328	8,472	1,510	1,155	27,143	7,887	58,776
Mar 2009	11,991	4,380	8,891	1,577	1,226	28,065	7,749	60,232
Apr 2009	10,853	3,920	8,350	1,462	1,145	25,730	6,914	54,887
May 2009	11,183	3,994	8,702	1,516	1,208	26,603	7,243	56,964
Jun 2009	11,665	4,129	9,387	1,638	1,296	28,115	8,564	62,621
Jul 2009	12,838	4,537	10,986	1,833	1,471	31,665	9,686	71,270
Aug 2009	12,702	4,498	10,593	1,801	1,431	31,025	9,424	69,604
Sep 2009	11,057	3,968	8,858	1,524	1,216	26,623	7,773	58,395
Oct 2009	11,347	4,072	8,901	1,542	1,212	27,074	7,274	57,811
Nov 2009	11,321	4,149	8,734	1,517	1,180	26,901	7,390	57,553
Dec 2009	12,919	4,790	9,654	1,691	1,288	30,342	8,734	65,447
	AEP	APS	COMED	DAY	DLCO	WESTERN	DOM	PJM RTO
Jan 2010	13,385	4,925	9,719	1,729	1,308	31,066	9,224	67,539
Feb 2010	11,845	4,370	8,680	1,532	1,168	27,595	8,075	59,831
Mar 2010	12,209	4,449	9,160	1,609	1,245	28,672	7,977	61,640
Apr 2010	10,997	3,949	8,562	1,482	1,158	26,148	7,094	55,899
May 2010	11,349	4,027	8,929	1,541	1,224	27,070	7,431	58,075
Jun 2010	11,840	4,163	9,633	1,664	1,313	28,613	8,770	63,822
Jul 2010	12,960	4,551	11,211	1,846	1,483	32,051	9,877	72,268
Aug 2010	12,913	4,547	10,861	1,835	1,454	31,610	9,652	71,020
Sep 2010	11,207	3,997	9,075	1,546	1,231	27,056	7,952	59,443
Oct 2010	11,456	4,089	9,090	1,558	1,224	27,417	7,415	58,654
Nov 2010	11,515	4,181	8,924	1,546	1,195	27,361	7,558	58,598
Dec 2010	13,050	4,822	9,847	1,706	1,301	30,726	8,911	66,425

**Table E-3**

**MONTHLY NET ENERGY FORECAST (GWh)  
FOR FE/GPU AND PLGRP**

	<b>FE/GPU</b>	<b>PLGRP</b>
Jan 2008	5,357	4,166
Feb 2008	4,906	3,792
Mar 2008	4,923	3,717
Apr 2008	4,530	3,321
May 2008	4,693	3,377
Jun 2008	5,053	3,462
Jul 2008	5,778	3,860
Aug 2008	5,648	3,794
Sep 2008	4,751	3,369
Oct 2008	4,800	3,451
Nov 2008	4,697	3,469
Dec 2008	5,257	4,011
	<b>FE/GPU</b>	<b>PLGRP</b>
Jan 2009	5,419	4,198
Feb 2009	4,810	3,708
Mar 2009	5,035	3,793
Apr 2009	4,608	3,363
May 2009	4,775	3,422
Jun 2009	5,159	3,529
Jul 2009	5,892	3,921
Aug 2009	5,762	3,856
Sep 2009	4,847	3,423
Oct 2009	4,899	3,504
Nov 2009	4,814	3,540
Dec 2009	5,393	4,091
	<b>FE/GPU</b>	<b>PLGRP</b>
Jan 2010	5,521	4,254
Feb 2010	4,909	3,767
Mar 2010	5,169	3,876
Apr 2010	4,707	3,421
May 2010	4,886	3,488
Jun 2010	5,277	3,599
Jul 2010	5,995	3,974
Aug 2010	5,907	3,942
Sep 2010	4,952	3,484
Oct 2010	4,986	3,552
Nov 2010	4,917	3,611
Dec 2010	5,491	4,148

**TABLE F-1****PJM RTO HISTORICAL PEAKS  
(MW)****SUMMER**

<b>YEAR</b>	<b>NORMALIZED BASE</b>	<b>NORMALIZED COOLING</b>	<b>NORMALIZED TOTAL</b>	<b>UNRESTRICTED PEAK</b>	<b>PEAK DATE/TIME</b>
1998	72,950	38,170	111,120	114,996	07/21/1998 17:00
1999	73,990	42,980	116,970	121,655	07/06/1999 17:00
2000	76,300	40,080	116,380	114,178	08/09/2000 17:00
2001	75,990	45,080	121,070	131,116	08/09/2001 16:00
2002	77,140	48,120	125,260	130,360	08/01/2002 17:00
2003	77,650	46,700	124,350	126,332	08/21/2003 17:00
2004			130,645	120,235	06/09/2004 17:00
2005			133,550	134,219	07/26/2005 16:00
2006			134,905	145,951	08/02/2006 17:00
2007			136,095	141,383	08/08/2007 17:00

**WINTER**

<b>YEAR</b>	<b>NORMALIZED BASE</b>	<b>NORMALIZED HEATING</b>	<b>NORMALIZED TOTAL</b>	<b>UNRESTRICTED PEAK</b>	<b>PEAK DATE/TIME</b>
97/98				88,970	01/14/1998 19:00
98/99				99,982	01/05/1999 19:00
99/00				102,359	01/27/2000 20:00
00/01				101,717	12/20/2000 19:00
01/02				97,294	01/03/2002 19:00
02/03				112,755	01/23/2003 19:00
03/04			108,110	106,760	01/26/2004 19:00
04/05			110,250	114,061	12/20/2004 19:00
05/06			111,745	110,415	12/14/2005 19:00
06/07			112,455	118,800	02/05/2007 20:00

Notes: Normalized values for 1998 - 2003 are calculated by PJM staff using the bottom-up coincident peak weather-normalization methodology.  
Normalized values for 2004 - 2007 are calculated by PJM staff using a methodology consistent with the PJM Load Forecast Model.

**TABLE F-2**

**PJM RTO HISTORICAL NET ENERGY  
(GWH)**

<b>YEAR</b>	<b>ENERGY</b>	<b>GROWTH RATE</b>
1998	620,061	0.8%
1999	636,404	2.6%
2000	651,190	2.3%
2001	651,319	0.0%
2002	673,526	3.4%
2003	674,471	0.1%
2004	689,008	2.2%
2005	682,441	-1.0%
2006	694,989	1.8%

Note: All historic net energy values reflect the membership of the PJM RTO as of December 31, 2007.