



US Army Corps
of Engineers®
Vicksburg District



Vicksburg District Overview

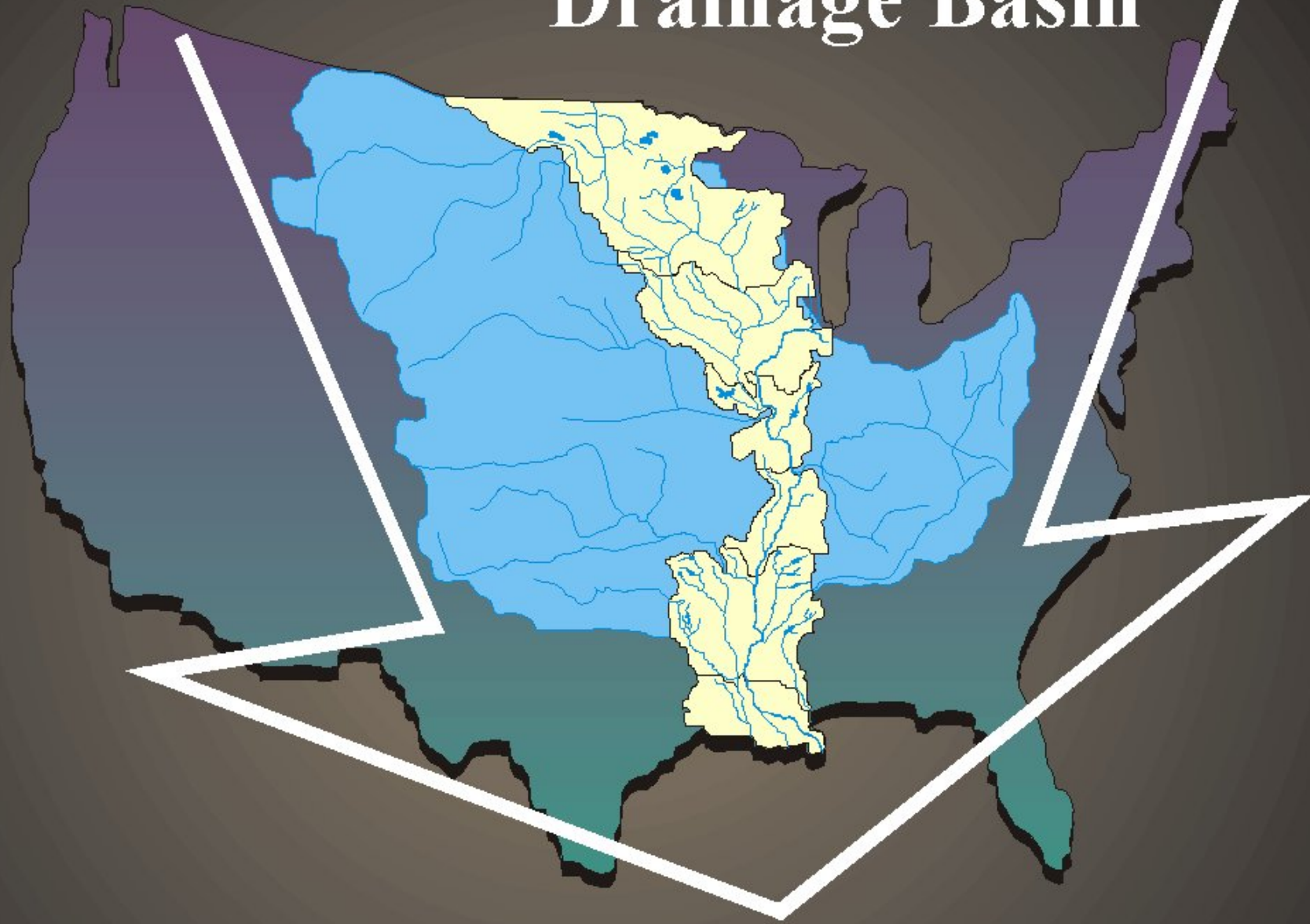
River Operations Mission

26 August 2007

One Team: Relevant, Ready, Responsive and Reliable

41%

Mississippi River Drainage Basin



The Vicksburg District





Inland Waterways carry building blocks of the nation's economy:

- **Over 1/2 of all grain exports**
- **1 billion barrels of petroleum**
- **450 million barrels of chemicals**
- **200 million tons of coal that generate 75% of nation's electricity**

The nation's port system provides a key link between every community and the rest of the world

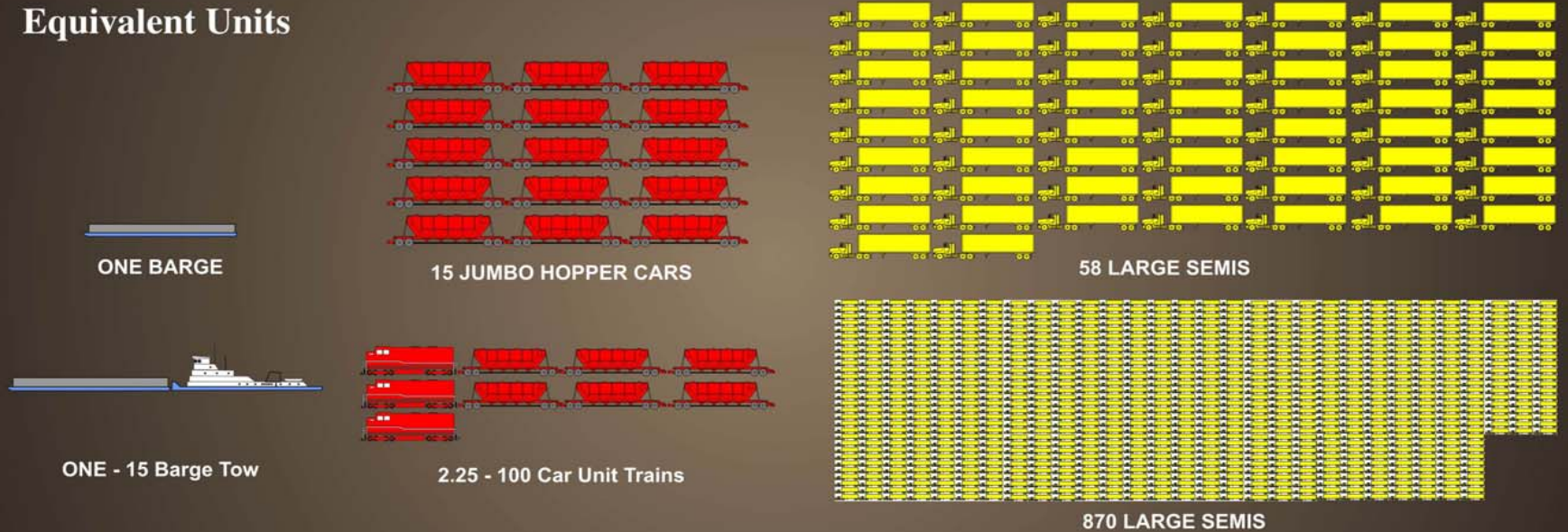


Compare.....

Cargo Capacity



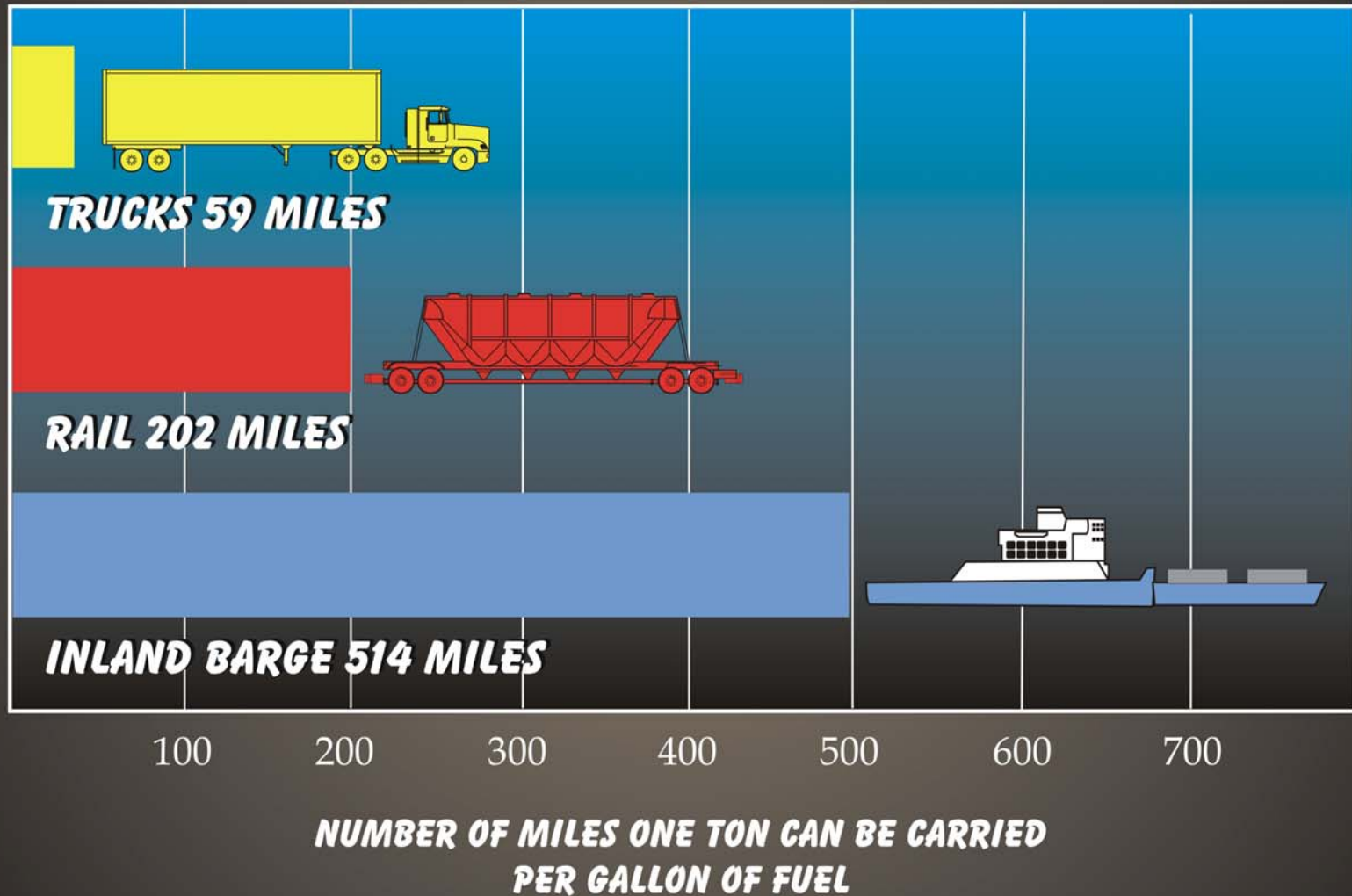
Equivalent Units



Equivalent Lengths



Relative Energy Efficiencies





US Army Corps
of Engineers®
Vicksburg District

River Operations

Navigation / Dredging/Flood Control



US Army Corps
of Engineers®
Vicksburg District

NAVIGATION PROBLEMS



February 2, 2007
Vicksburg Bridge

One Team: Relevant, Ready, Responsive and Reliable



US Army Corps
of Engineers®
Vicksburg District



One Team: Relevant, Ready, Responsive and Reliable



US Army Corps
of Engineers®
Vicksburg District

Near Miss on Major Spill



One Team: Relevant, Ready, Responsive and Reliable



US Army Corps
of Engineers®
Vicksburg District

Navigation



— One Team: Relevant, Ready, Responsive and Reliable —



US Army Corps
of Engineers®
Vicksburg District

Dredging



— One Team: Relevant, Ready, Responsive and Reliable —

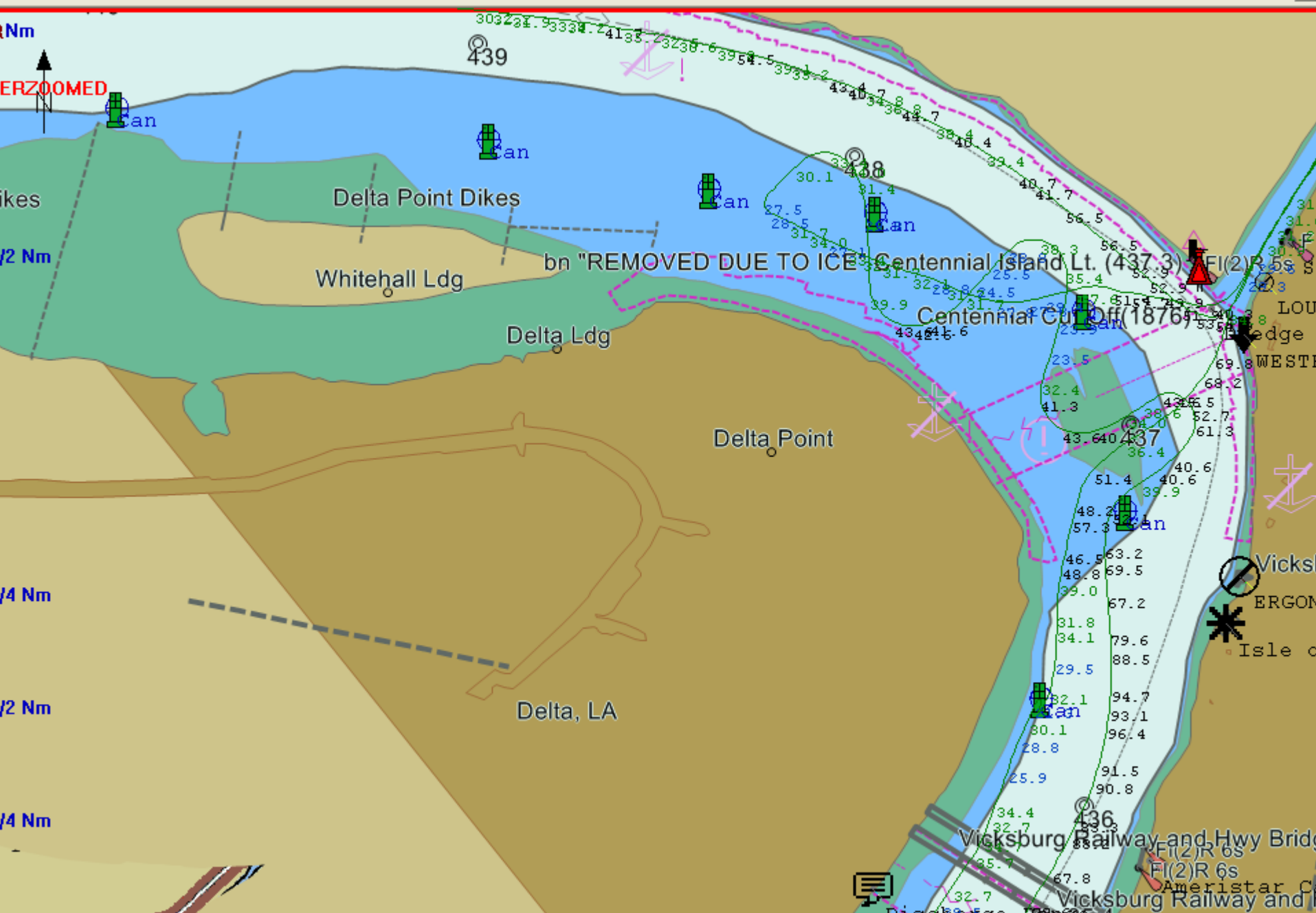


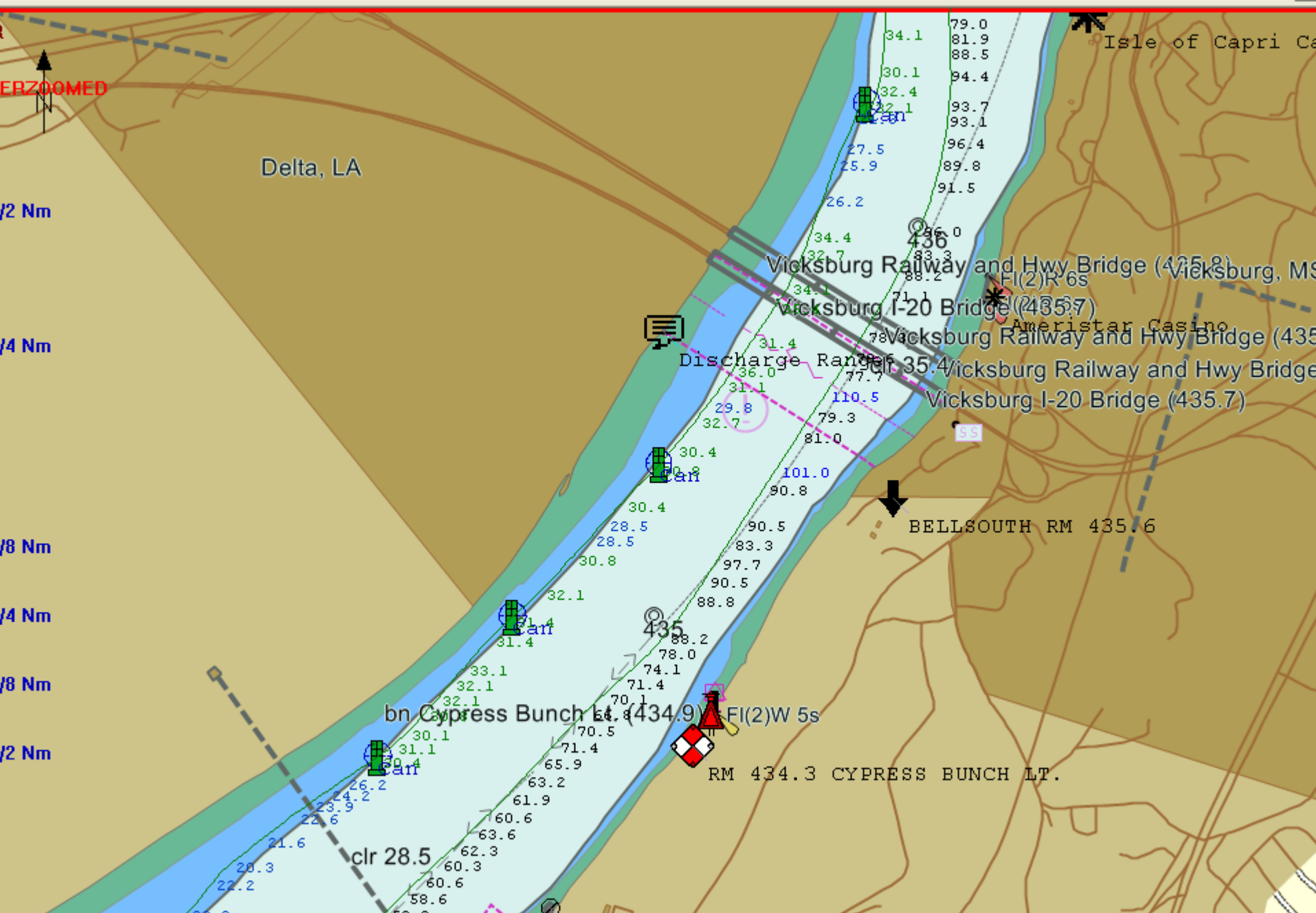
US Army Corps
of Engineers®
Vicksburg District

Dustpan Dredge



— *One Team: Relevant, Ready, Responsive and Reliable* —







US Army Corps
of Engineers®
Vicksburg District

Flood Control

Mat Sinking Unit

Work Force:

317 Employees

- **46 Permanent**
- **136 Seasonal**
- **135 Temporary**

Work Period:

- **1-10 Hour Shift**
- **12 Days On, 2 Days Off**





US Army Corps
of Engineers®
Vicksburg District



Vicksburg District Overview

River Operations Mission

26 August 2008

One Team: Relevant, Ready, Responsive and Reliable