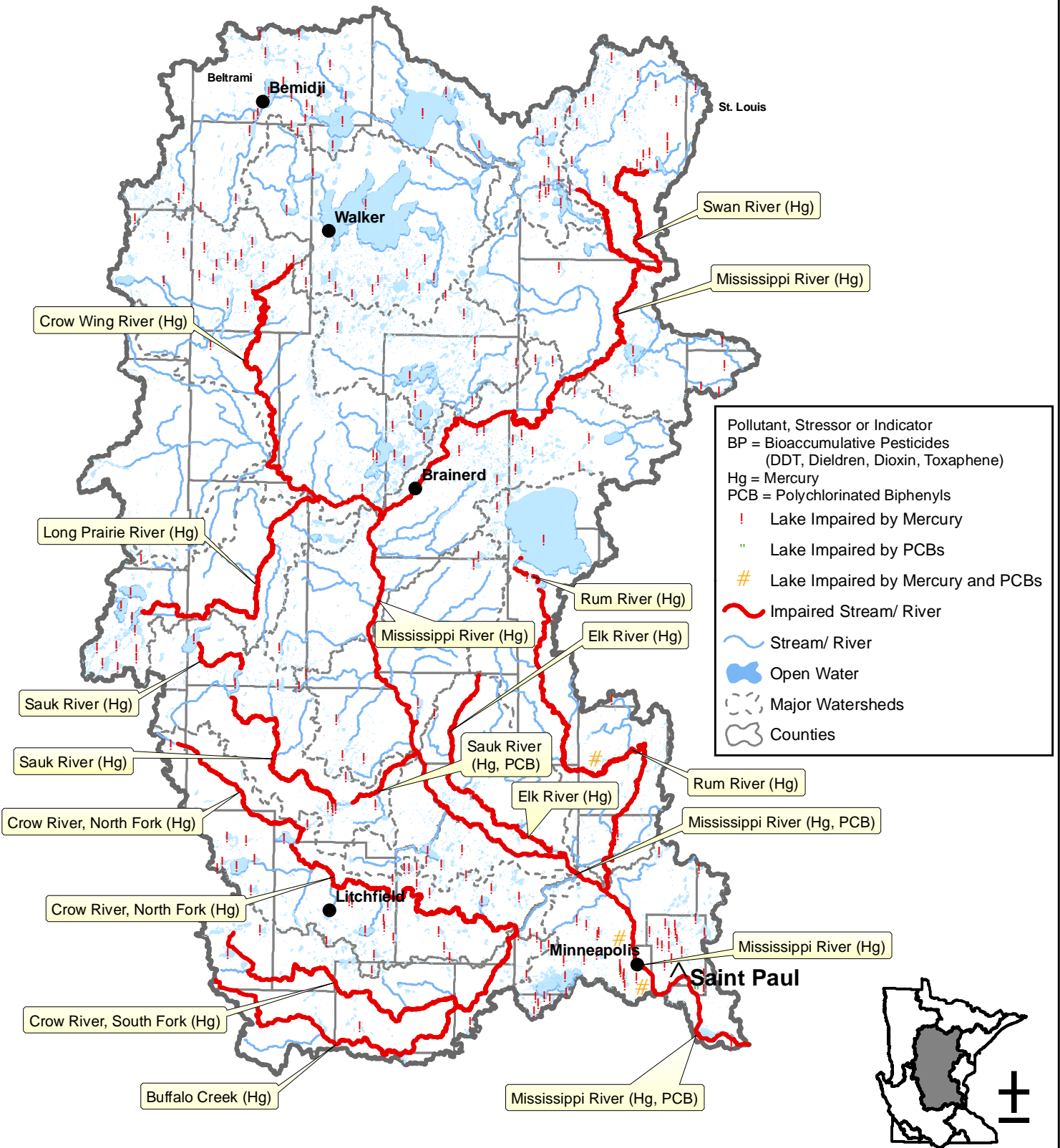


# Upper Mississippi River Basin: Bioaccumulative Toxics

2006 Impaired Waters Requiring a TMDL  
(per Section 303 (d) Clean Water Act)



For additional information concerning impairments, such as station information and monitoring data, see the MPCA Environmental Data Access System. <http://www.pca.state.mn.us/data/edaWater>

